

# SNOW PLAN UPDATE

*Winter 2021-2022*

*Environmental Quality & Public Works Committee  
October 19, 2021*



**LEXINGTON**

# Presentation Overview

- Snow Season Expense Comparison
- Status of Salt
- Route Rankings
- Service Levels
- Changes to the Snow Plan
- COVID-19 Coordination
- Sidewalk Snow Removal
- Staffing
- Projected Schedule for Plan Finalization

# Snow Season Expense Comparison

Fiscal Year	Expense*	Salt used (Tons)	Salt price ( per ton)	Mobilizations Full / Partial**
2018	\$478,743	10,306	\$58.32	12 / 6
2019	\$349,028	4,215	\$86.44	4/13
2020	\$440,706**	1,745	\$90.87/92.84	2/6
2021	\$930,160	8,038	\$68.90/70.90	7/2
2022		1,000 (rock)	\$88.99	

\* Does not include personnel

"Typical" winter averages 22 mobilizations per year

\*\* 7,000 tons loaded into W Hickman Barn 2020

*Full mobilization = All drivers and all supervisors and may include multiple shifts and days.*

*Partial mobilization = 1 supervisor and 1 driver or fewer per area.*

# Salt supply

**Currently on hand → 8,800 tons**

**Storage Capacity → 8,800 tons**

**(1,800 tons at Old Frankfort Pike & 7,000 tons at W Hickman)**

**FY 2022 budget → \$700,000**

**FY22 salt cost → \$88.99/ ton (In previous year \$2/ton more to deliver to W Hickman.)**



# Route Rankings

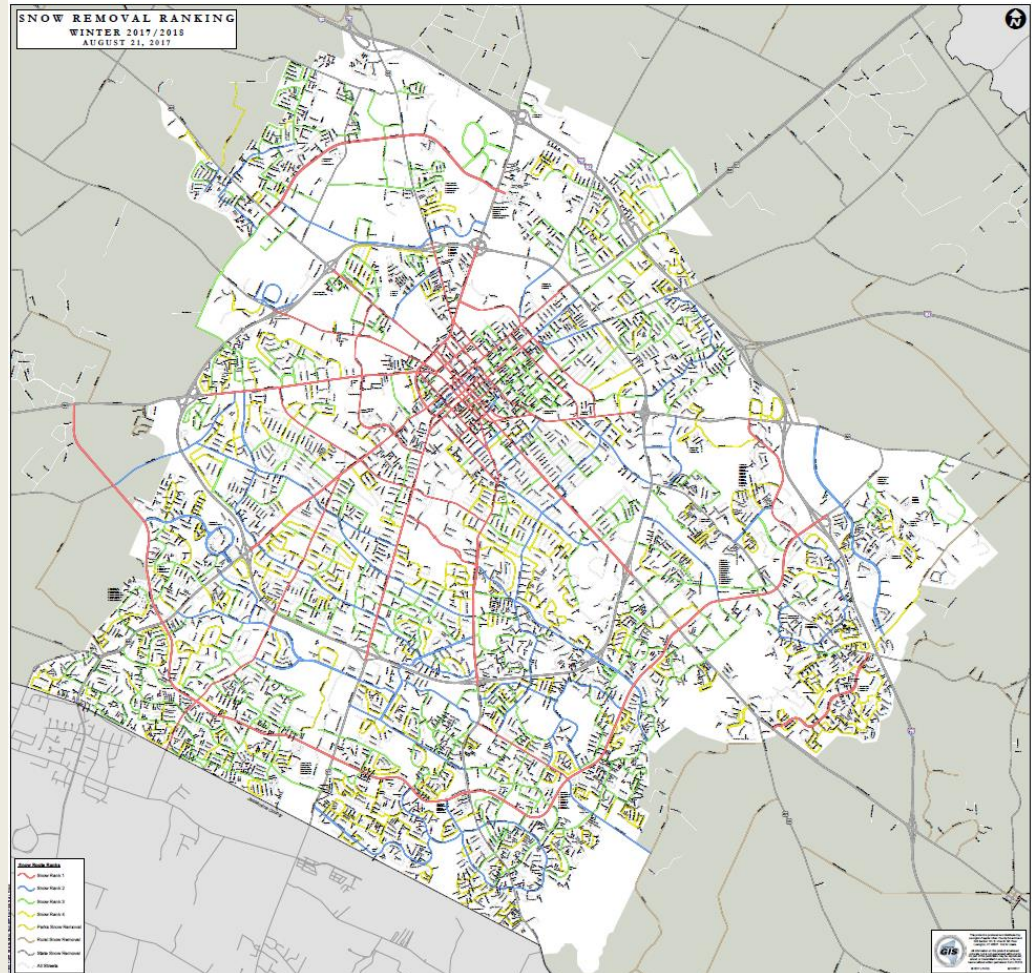
**Rank 1** -- primary arteries in and out of the city. (*Nicholasville Rd, Man O' War Blvd, etc.*) 296 lane miles\*

**Rank 2** -- major connecting streets. (*Lane Allen Rd, Loudon Ave, etc.*) 192 lane miles\*

**Rank 3** -- collector routes. (*Sandersville Rd, Old Todds Rd, etc.*) 356 lane miles\*

**Rank 4** -- local residential streets, which allow residents access to the main roads (*Dunkirk Dr, Glendover Rd, etc.*) 330 lane miles\*

\*lane miles:  
1 mile of a 2-lane road = 2 lane-miles





# Service Levels

## **Level 1 → 1" to 4" of accumulation**

- Operate under current plan (Rank 1-4 streets)

## **Level 2 → 5" to 8" of accumulation**

- In addition to the Rank 1-4 routes, we will add unranked residential collector streets that connect to collector streets

## **Level 3 → 8" of accumulation and above**

- In addition to the Rank 1-4 streets, we will attempt to plow as many streets as possible

## Changes for 2021-22 Snow Season

- Minor edits to reflect connectivity concerns, and school and public safety access.
- Increase pre-wetting of salt to reduce bounce and increase effectiveness.
- Areas 3, 4, 5, 6, 7-F and 9 will report to Brannon Road barn
- Rank 3 and 4 sidewalks may not be plowed in a service level 1 or 2 event.
- Completed sections of Town Branch Commons Trail will be added to the list of ranked sidewalks
- Kept COVID-19 protocols and coordination in place.
- Public access to the snowplow tracker website.

## COVID-19 Coordination

- Mutual COVID-19 assistance agreement with KYTC District #7.
- Updated emergency contact information across divisions and stakeholders for rapid internal communication.
- Consensus across divisions and agencies for mutual aid and support in the event of positive tests.
- Commissioner will serve as coordinator of rapid staff reallocation as needed.
- For 2021-2022, streets providing emergency access to certain critical facilities will have a Rank 1E ranking above Rank 1 should staffing become too limited to execute the traditional plan. Plan in development with UK and DEM.
- Continued emphasis on social distancing, vaccination, and disinfection of all surfaces among staff to limit the spread and prevent infection.

# 2021-22 Snow Plan

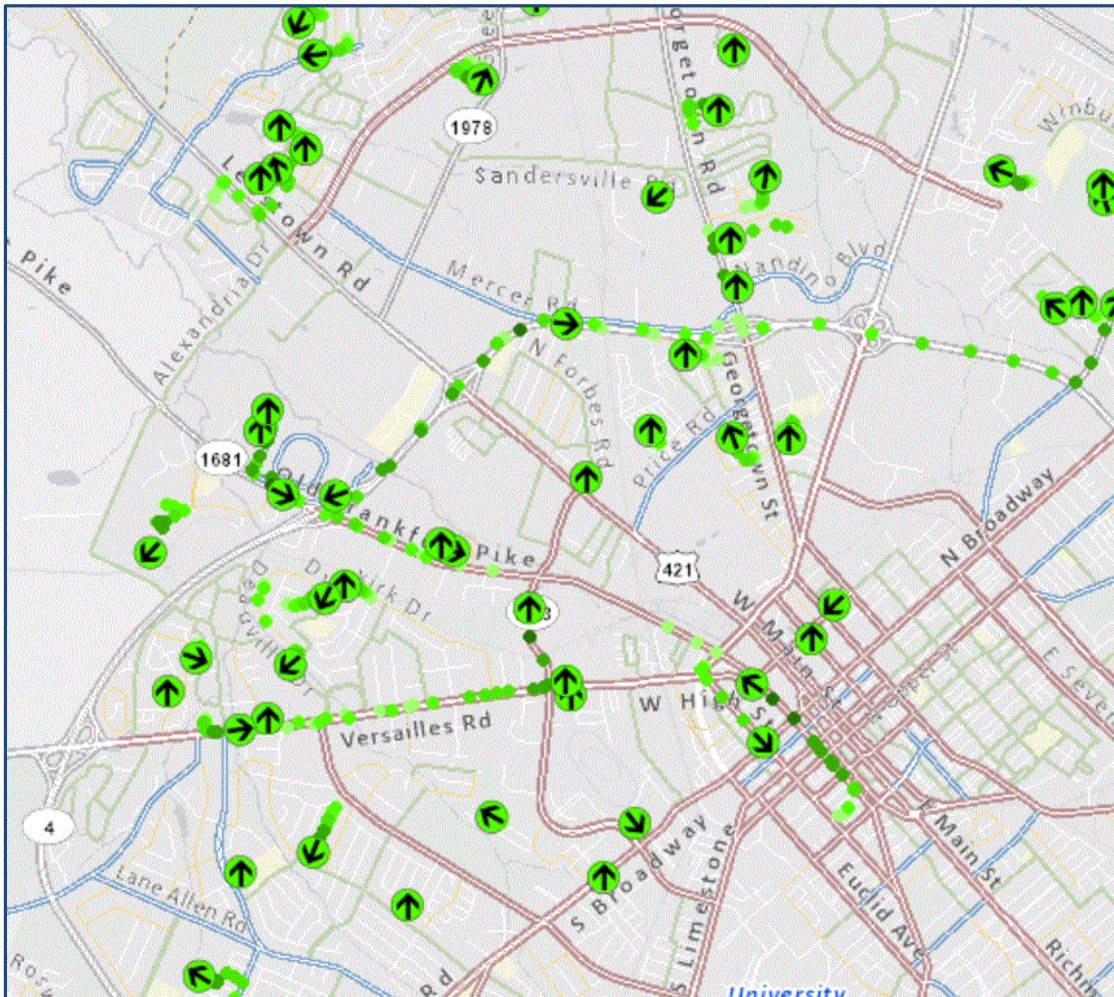
## Goals

- Complete Roadway Snow Plan (Rank 1 – 4 routes) within 48 hours of snow end.
- Complete Sidewalk Snow Plan (Rank 1 – 4 routes) within 96 hours of snow end.



# Snow Plow Tracker

<https://maps.lexingtonky.gov/snowresponse>



## Legend

### Tracking Test

Vehicle Location



Vehicle Trail - 1 minute



Vehicle Trail - 2 minutes



Vehicle Trail - 3 minutes



Vehicle Trail - 4 minutes



Vehicle Trail - 5 minutes



### Ranked Snow Routes

Snow Ranking - 72k

Rank 1

Rank 2

Rank 3

Rank 4

Parks Snow Removal

Rural Snow Removal

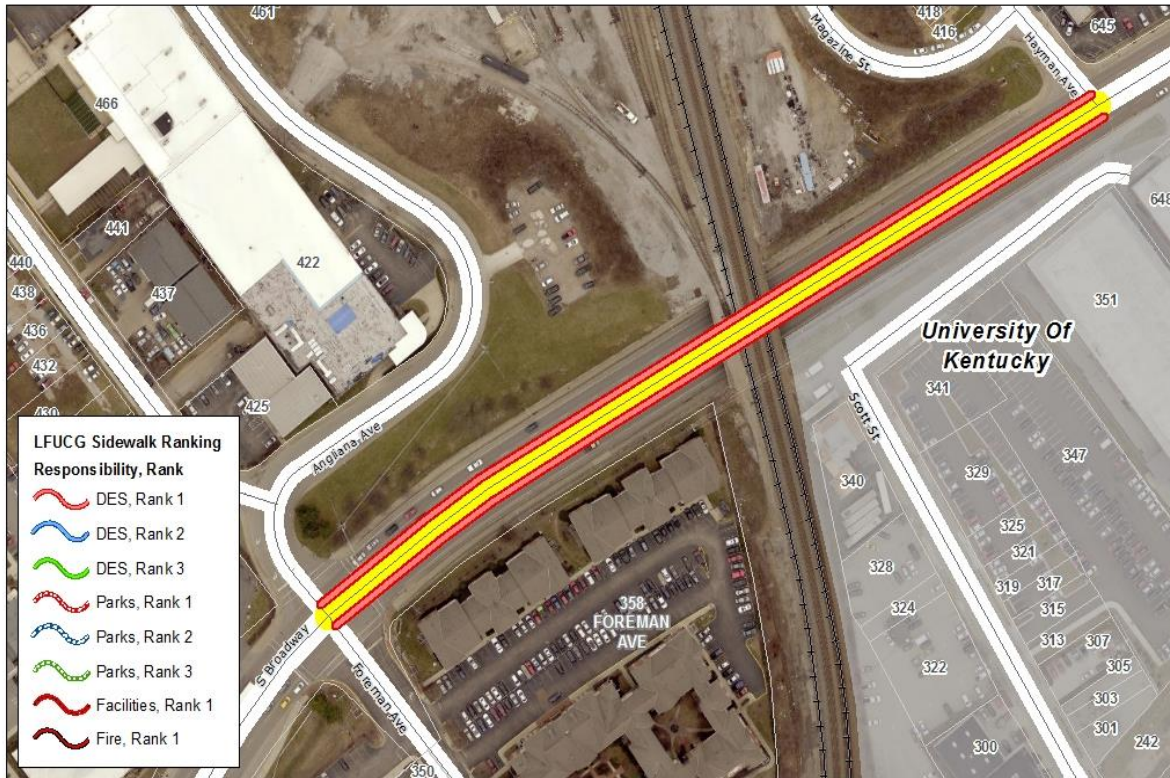
State Snow Removal

# Sidewalk Snow Removal

- Primary execution by combined forces of Environmental Services, Parks, and Facilities.
- Over 80 miles of sidewalks serviced with full execution of the plan.



# Sidewalk Snow Removal



- Sidewalk clearing begins after snow stops. Must coordinate timing with road crews to minimize re-coverage after clearance.



Sidewalk Snow Plan  
Lexington-Fayette Urban County Government  
Lexington, Kentucky

Notes: \_\_\_\_\_  
\_\_\_\_\_  
\_\_\_\_\_



Date: 12/21/2016



# Sidewalk Snow Removal

Rank examples	Length
<b>Rank 1</b> <ul style="list-style-type: none"><li>• Overpasses and underpasses</li><li>• City-owned facilities</li><li>• High density city-maintained sidewalks/crosswalks</li><li>• Service Open Parks Facilities</li></ul>	12.0 Sidewalk Miles
<b>Rank 2</b> <ul style="list-style-type: none"><li>• Designated city-maintained sidewalks on arterials and collectors in high density areas (i.e., Man O' War, Wellington Way, Wilson Downing, etc.)</li><li>• Service Closed Parks Facilities &amp; near bus stops</li><li>• School routes (school closed)</li></ul>	36.2 Sidewalk Miles
<b>Rank 3</b> <ul style="list-style-type: none"><li>• Perimeter sidewalks of Parks - High density areas</li></ul>	15.9 Sidewalk Miles
<b>Rank 4</b> <ul style="list-style-type: none"><li>• City-owned parcels in lower density residential areas (WQ lots, greenways);</li><li>• Perimeter sidewalks of Parks - Low density areas</li></ul>	16.9 Sidewalk Miles

# Staffing

**Streets and Roads** -- authorized strength: 68 CDL positions.

**Water Quality** – authorized strength: 29 CDL positions. Not all available to drive at the same time in case of sewer line breaks.

**Environmental Services** -- 7 positions operating equipment and/or shovels, including two backup drivers for clearing LFUCG maintained sidewalks.

**Other** – additional drivers from Water Quality, Parks, Waste Management and Environmental Services (if needed).



# **Plan Finalization Schedule**

**Stakeholder Meeting – September 09, 2021  
(LexTran, FCPS, state, etc.)**

**EQ&PW Committee Update – October 19, 2021**

**Post to Webpage – October 19, 2021**

# QUESTIONS / COMMENTS?

