

## RELEASE OF EASEMENT

**THIS RELEASE OF EASEMENT** (hereinafter "Release"), made and entered into this the \_\_\_\_ day of \_\_\_\_\_, 2013, by and between **LEXINGTON-FAYETTE URBAN COUNTY GOVERNMENT**, 200 East Main Street, Lexington, Kentucky, 40507, an Urban County Government pursuant to KRS 67A (hereinafter "First Party"), and **SOUTHLAND CHRISTIAN CHURCH OF LEXINGTON, KENTUCKY, INC.**, a Kentucky Non-Profit Corporation (hereinafter "Second Party");

### WITNESSETH:

**WHEREAS**, through that certain Deed of Easement dated March 23, 1967, of record in Deed Book 896, Page 234, in the Fayette County Clerk's Office, the First Party acquired a sanitary sewer line easement, as more particularly described therein ("Sewer Line Easement").

**WHEREAS**, said Sewer Line Easement is shown as a "12' San. S.E." on the Building Site Record Plat, Lakeview Shopping Center, Tract "A", of record in Plat Cabinet A, Slide 110 (formerly Plat Book 20, Page 58), in the Fayette County Clerk's Office ("Lakeview Center Plat").

**WHEREAS**, a second sewer line easement is shown as a "12' "San. Sew. Ease." ("Sewer Easement") on that Amended Final Plat of Lexington Mall, of record in Plat Cabinet B, Slide 562 (formerly Plat Book 36, Page 70) in the Fayette County Clerk's Office ("Lexington Mall Plat").

**WHEREAS**, portions of the existing Sewer Line Easement and Sewer Easement ("Released Portions") are no longer required by the First Party, and the First Party desires to release and extinguish its interest in and to said Released Portions of said Sewer Line Easement and Sewer Easement, as more particularly shown as the hatched portions of the Sewer Line Easement and Sewer Easement "To be Released" areas on the attached Sanitary Sewer Easement Release Exhibit, which is marked Exhibit "A" and incorporated herein by reference.

**NOW, THEREFORE**, for valuable consideration, receipt of which is hereby acknowledged, First Party does hereby release, relinquish and quitclaim unto Second Party, its successors and assigns, all of its right, title and interest, if any, in and to such Released Portions of said Sewer Line Easement and Sewer Easement, as described above.

It is the intention of the First Party to forever extinguish its easement interest in the Released Portions areas described above, and the Second Party, its successors and assigns forever, shall hereafter have and enjoy said Released Portions of said Sewer Line Easement and Sewer Easement free and discharged from the interest of First Party. It is understood that in making this Release, any portion of the Sewer Line Easement and Sewer Easement, as shown on the Lakeview Center Plat and the Lexington Mall Plat, not included in the Released Portions areas remains unaffected.

IN WITNESS WHEREOF, the First Party has hereby caused its corporate name to be affixed by its duly authorized officer, on this the day and year first above written.

LEXINGTON-FAYETTE URBAN  
COUNTY GOVERNMENT

\_\_\_\_\_  
Mayor

STATE OF KENTUCKY

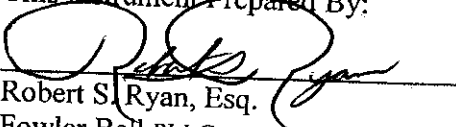
COUNTY OF FAYETTE

The foregoing instrument was acknowledged before me by \_\_\_\_\_, as \_\_\_\_\_ of Lexington-Fayette Urban County Government, an urban county government pursuant to KRS 67A, on behalf of said government, on this \_\_\_\_ day of \_\_\_\_\_, 2013.

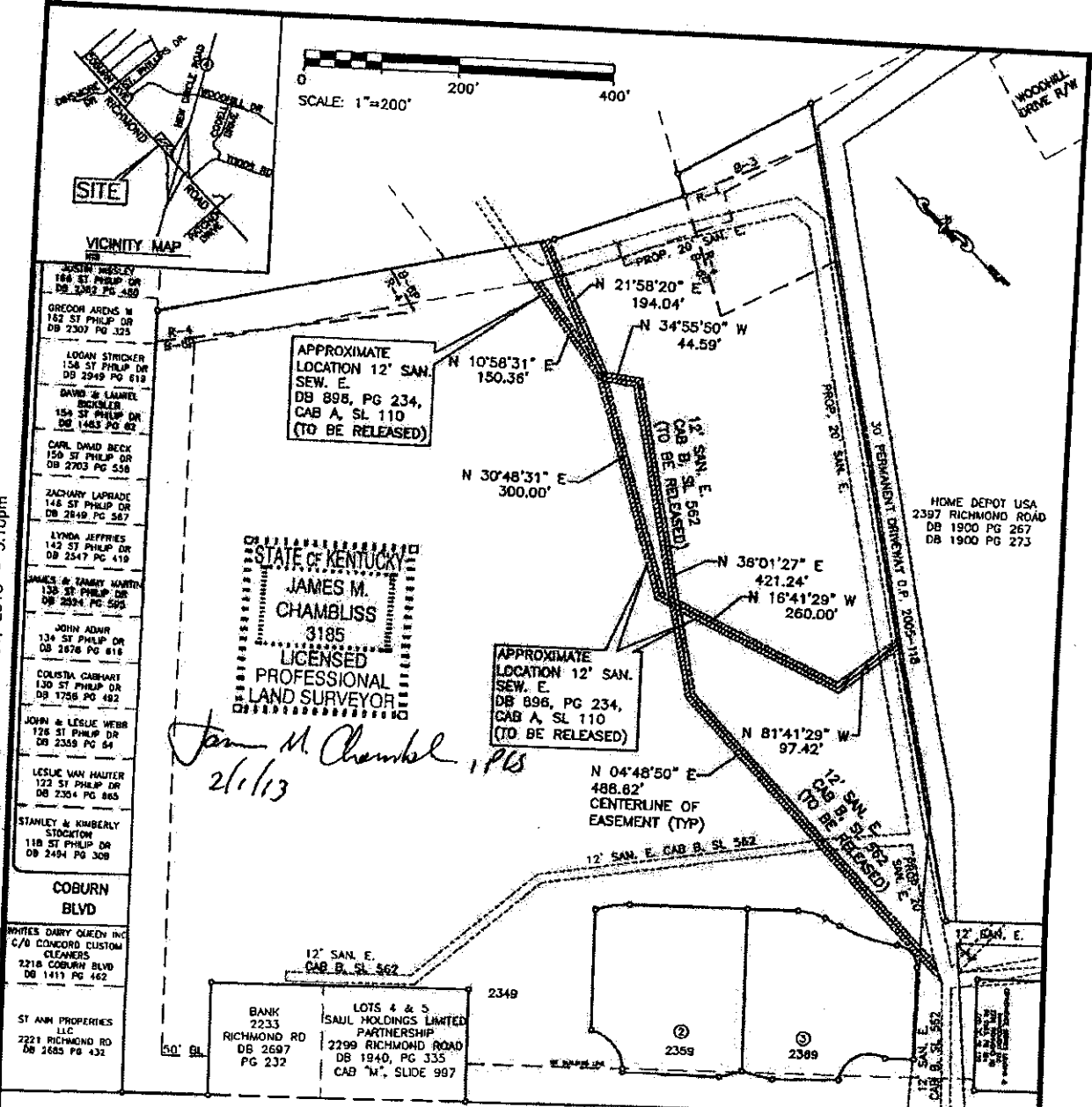
My Commission expires: \_\_\_\_\_

\_\_\_\_\_  
NOTARY PUBLIC

This Instrument Prepared By:

  
Robert S. Ryan, Esq.  
Fowler Bell PLLC  
300 West Vine Street, Suite 600  
Lexington, KY 40507-1660  
(859) 252-6700  
(859) 255-3735 fax  
RRyan@FowlerLaw.com

File: S:\LEX\3600--3699\3605\008\Acad\Outlot\Plot\REV EASEMENT RELEASE EXHIBITS.dwg Time: Feb 01, 2013 - 3:10pm




This easement release exhibit is for Southland Christian Church of Lexington Kentucky Inc, and was prepared by James M. Chambliss, PLS 3185.

The purpose of this exhibit is to show the location and dimensions of two partial sanitary sewer easement releases.

The sanitary easements shown hereon are based on field locations of the easement limits by method of random traverse. These locations are based on the ALTA/ACSM Land Title survey of the Saul Holdings Limited Partnership property of record in Deed Book 1940, Page 335 by Strand Associates, Inc., using the method of random traverse in July 2010 with an unadjusted closure of 1:171,728.

RICHMOND ROAD (US HIGHWAY 25)

**LEGEND**

 EASEMENT TO BE RELEASED

STRAND ASSOCIATES, INC.  
1525 BULL LEA ROAD, SUITE 100  
LEXINGTON, KY 40511  
859-225-8500

**SANITARY SEWER EASEMENT RELEASE EXHIBIT  
FOR SOUTHLAND CHRISTIAN CHURCH  
OF LEXINGTON KENTUCKY INC  
2349 RICHMOND ROAD  
LEXINGTON, FAYETTE COUNTY, KENTUCKY**

NOTE: THIS IS NOT A BOUNDARY SURVEY AND IS NOT INTENDED FOR LAND TRANSFER



**FIGURE\_NO**  
3605008