



LEXINGTON

DOMESTIC & SEXUAL VIOLENCE PREVENTION COALITION

*Stephanie Theakston, Domestic and Sexual Violence Prevention Coordinator
Social Services and Public Safety Committee
April 15, 2025*





Programs

domestic & sexual violence
Prevention Coalition



It's Time.
Lexington



GREEN DOT
LEXINGTON





Coordinated Community Response



- Ampersand SVRC, Director
- CHES Solutions Group, Service Director
- Children's Advocacy Center, Director
- Chrysalis House, Director
- Fayette Co. Attorney
- Fayette Co. Circuit Court Clerk
- Fayette Co. Commonwealth Attorney
- Fayette Co. District Court, Chief Judge
- Fayette Co. Family Court, Chief Judge
- Fayette Co. Public Schools, Superintendent
- Fayette Co. Sheriff
- Friend of the Court
- Global Lex, Multicultural Affairs Coordinator
- GreenHouse17
- KY CHFS, Service Region Administrator
- Legal Aide of the Bluegrass, VAWA Attorney
- Lexington City Council, Councilmember
- Lexington Community & Resident Services, Director
- Lexington Dept. of Public Safety, Commissioner
- Lexington Dept. of Social Services, Commissioner
- Lexington Family Care Center, Director
- Lexington Police Dept., Chief
- Nursing Home Ombudsman
- Sexual Assault Nurse Examiner, Director
- The Nest, Director
- UK Police Department, Chief
- UK VIP, Director
- 10 At-Large Community Members





Mission

To create a culture of safety and empowered stakeholders through advocacy, education, collaboration, and service coordination for communities impacted by interpersonal violence.





Goals

- To develop and facilitate an effective community-wide system of prevention and intervention that is responsive to the needs of victims of interpersonal violence and those they care about
- To facilitate coordination and communication of best practices among community and systems-based agencies
- To monitor, evaluate, and promote the quality and effectiveness of services and protections in the community
- To promote a clear understanding of interpersonal violence, current laws, and resources available in the community and the impact on the community
- To serve as a network for information and resource sharing for interpersonal violence issues





Outreach & Awareness



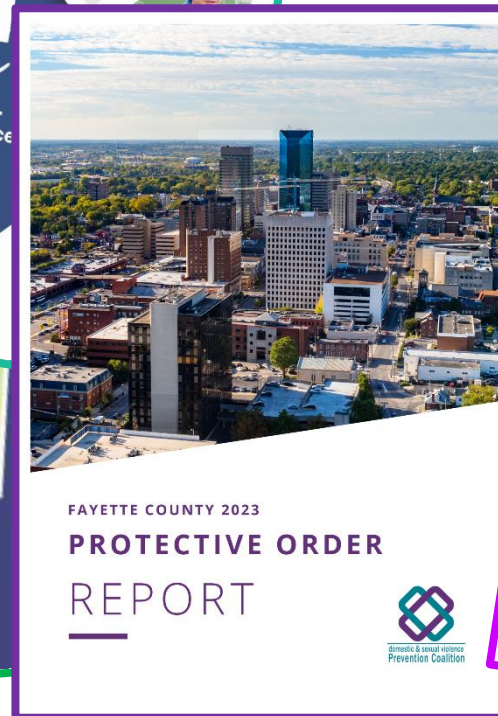


Advocacy





Best Practices





April is National Sexual Assault Awareness Month



**TOGETHER WE ACT,
UNITED WE CHANGE**



SEXUAL ASSAULT AWARENESS MONTH 2025





Continuum of Sexual Violence





Facts About Sexual Assault

- 1 in 5 women, 1 in 71 men, and 1 in 2 transgender people in the US have experienced rape or attempted rape in their lifetime.
- People with marginalized identities experience sexual assault at higher rates.
- The majority of sexual assaults are committed by someone the survivor knows. More than 50% of female survivors report being assaulted by an intimate partner, more than 40% by an acquaintance. Only a small percentage of sexual assaults are committed by strangers.
- Kentucky has a higher rate of sexual assault (23.3%) than the national average (19.1%).
- Sexual assault remains the most UNDERREPORTED crime. 63% of sexual assaults are not reported to police. (Only 12% of child sexual assault is reported). Survivors often do not seek help immediately.



- Decades of research confirms the prevalence of false reporting is around 2-7%. (1.6% in Lexington, 2022)



Profound Impact on Survivors

- Depression
- Anxiety
- Trauma
- Panic attacks
- Stress
- Suicidality
- Substance abuse
- PTSD
- Sleep disturbances
- Difficulty concentrating

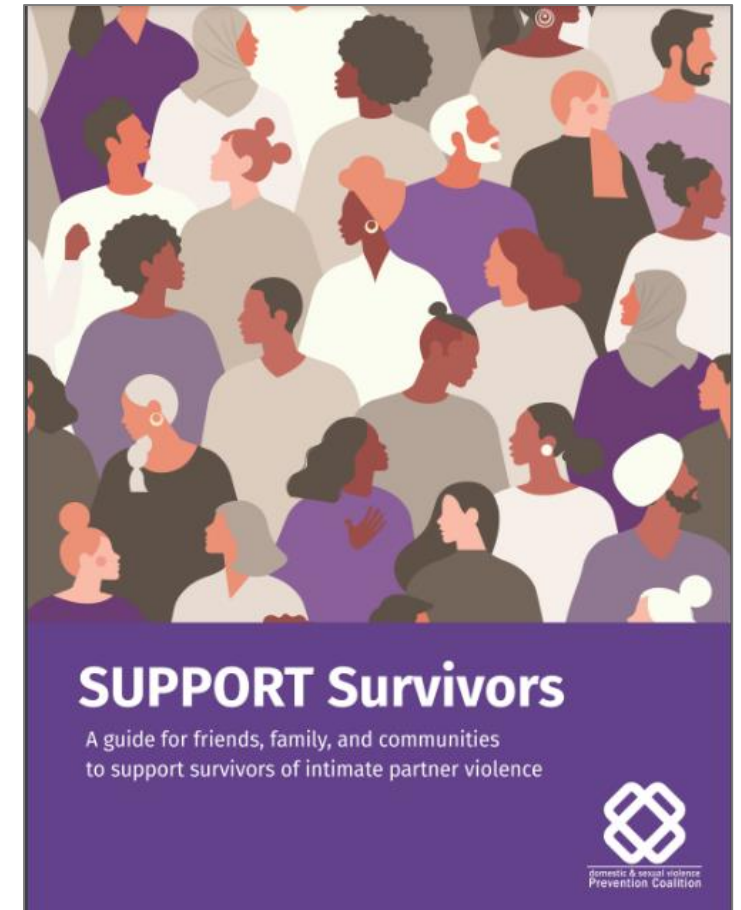




Responding to Survivors of Sexual Assault

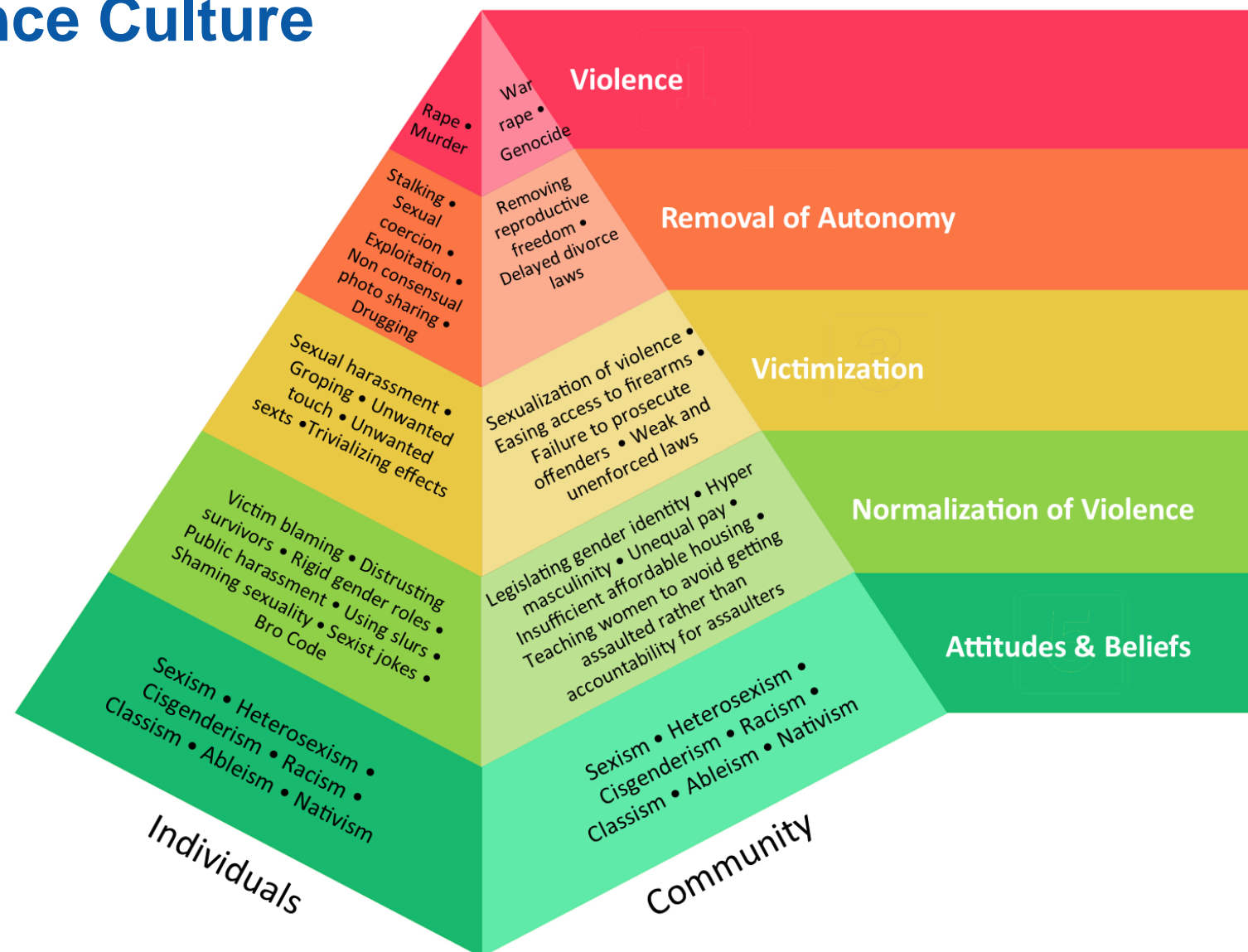
- I believe you.
- I'm sorry this happened to you.
- You are not to blame.

- Listen without judgement or interruptions.
- Safety plan.
- Trust the survivor's choices.
- Share resources.





Sexual Violence Culture





Sexual Assault is Preventable

To stop sexual assault and other forms of abuse before they start, our efforts need to go beyond changing individuals.

When we **change our communities to be more inclusive and equitable** for people of all gender identities and expressions, races and ethnic backgrounds, ages, faiths, and abilities, we are better able to protect everyone within those communities against the risk of sexual violence.

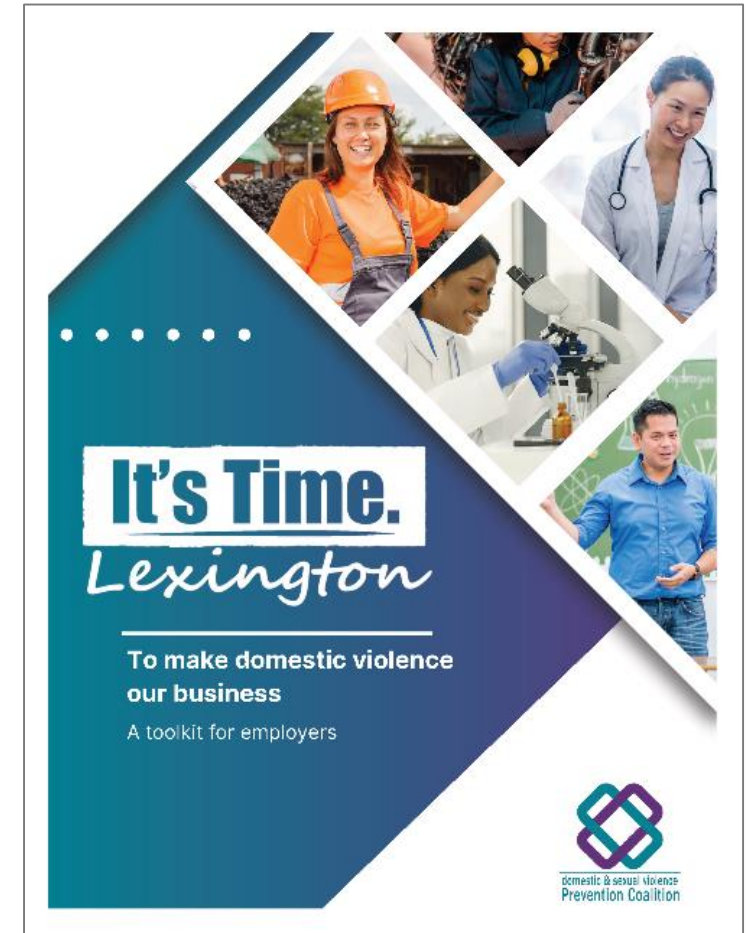
- National Sexual Violence Resource Center (NSVRC)





Strengthening Community

- Develop supportive workplaces.
- Model respect.
- Be an active bystander.
- Speak up against violence and inequality.
- Speak directly to youth about healthy relationships.
- Prioritize safety needs, such as affordable housing and equal pay.
- Broaden gender norms and accountability.





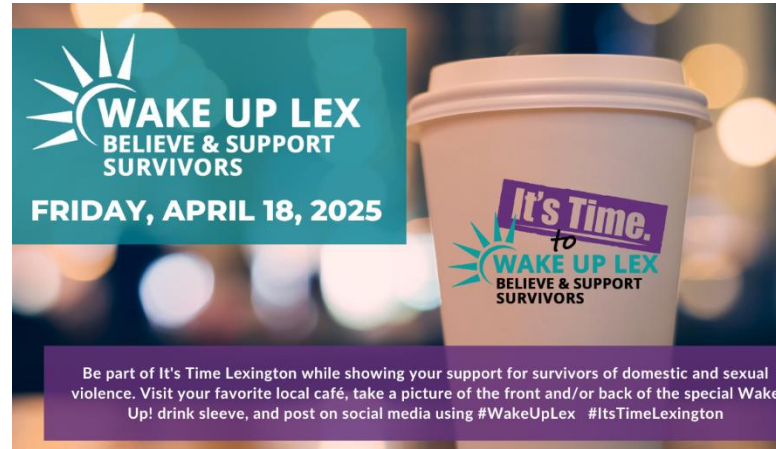
Resources

- National Sexual Assault Hotline: 1-800-656-4673
 - Connect you with Sexual Assault Resource Center of the Bluegrass (Previously Ampersand)
 - Chat online: online.rainn.org
- University of Kentucky VIP Center: 859-257-3574
- UKPD Special Victims Unit: 859-218-2370
- Transylvania University Title IX Office: 859-233-8502
- GreenHouse17 (Sexual Assault by Intimate Partners): 1-800-544-2022
- Lexington Sexual Assault Nurse Examiner: 859-258-3742
- Children's Advocacy Center: 859-225-5437





Wake Up Lex



Participating Locations

A Cup of Commonwealth

105 Eastern Ave
401 S Limestone St.

Backroads Bakery

109 W 6th St.

Breve Coffee Company

1170 Manchester St.

Chaotic Good: Coffee, Comics, & Games

545 S. Broadway, Ste. 160

Chocolate Holler

400 Old Vine St.

Common Grounds

4772 Hartland Pkwy.
3100 Old Todds Rd.

Crank & Boom Craft Ice Cream

3101 Clays Mill Rd.
1210 Manchester St.

Donut Days Bakery

185 Southland Dr.

Doodles Breakfast & Lunch

262 N Limestone

DV8 Kitchen

867 S Broadway
594 E Third St. #100

Genesis Coffee House

1403 N. Forbes Rd.

Good Foods Co-Op Café

455 Southland Dr.

Gratz Perk

Transylvania University

Great Bagel & Bakery

396 Woodland Ave
3650 Boston Rd

Grounded All Day

106 Burke Rd.

High on Art & Coffee

523 E High St.

Kenwick Table

201 Owsley Ave

La Petite Delicat

722 National Ave.

Leestown Coffee House

1416 Leestown Rd.

Lussi Brown Coffee Bar

114 Church St.

Manchester Coffee

576 E Third St.

Martines

400 E Third St.

McLeod's Coffee House

376 Southland Dr.

North Lime Coffee & Donuts

101 W Loudon Ave

Old School Coffee

380 S Mill St. (Dudley Square)

Parlor Donuts

630 Euclid Ave.

The Greenery

206 W Main St.

Third Street Stuff

257 N Limestone

UK VIP Center

Student Center Starbucks

Zim's Cafe

215 W Main St.



Questions?



LEXINGTON

