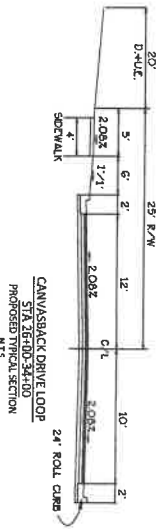
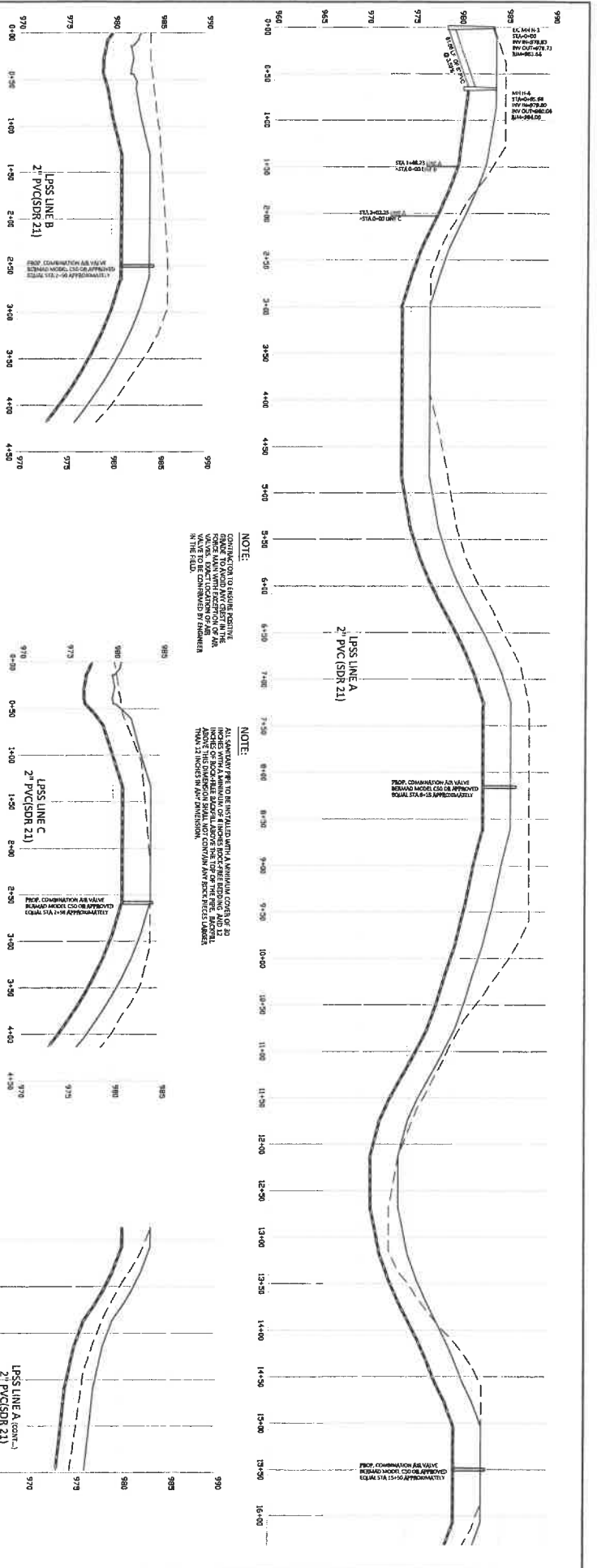


- CURVE #10
 $\Delta I.C.T. = 18.76^\circ$
 $R = 425.00'$
 $PI = 517.00'$
 $CH = 150.00'$
- CURVE #11
 $\Delta I.C.T. = 13.20^\circ$
 $R = 50.00'$
 $PI = 510.8427'$
 $CH = 50.00'$
- CURVE #12
 $\Delta I.C.T. = 13.20^\circ$
 $R = 50.00'$
 $PI = 510.8427'$
 $CH = 50.00'$
- CURVE #13
 $\Delta I.C.T. = 13.20^\circ$
 $R = 50.00'$
 $PI = 510.8427'$
 $CH = 50.00'$
- CURVE #14
 $\Delta I.C.T. = 13.20^\circ$
 $R = 50.00'$
 $PI = 510.8427'$
 $CH = 50.00'$
- CURVE #15
 $\Delta I.C.T. = 13.20^\circ$
 $R = 50.00'$
 $PI = 510.8427'$
 $CH = 50.00'$
- CURVE #16
 $\Delta I.C.T. = 13.20^\circ$
 $R = 50.00'$
 $PI = 510.8427'$
 $CH = 50.00'$
- CURVE #17
 $\Delta I.C.T. = 13.20^\circ$
 $R = 50.00'$
 $PI = 510.8427'$
 $CH = 50.00'$
- CURVE #18
 $\Delta I.C.T. = 13.20^\circ$
 $R = 50.00'$
 $PI = 510.8427'$
 $CH = 50.00'$
- CURVE #19
 $\Delta I.C.T. = 13.20^\circ$
 $R = 50.00'$
 $PI = 510.8427'$
 $CH = 50.00'$
- CURVE #20
 $\Delta I.C.T. = 13.20^\circ$
 $R = 50.00'$
 $PI = 510.8427'$
 $CH = 50.00'$
- CURVE #21
 $\Delta I.C.T. = 13.20^\circ$
 $R = 50.00'$
 $PI = 510.8427'$
 $CH = 50.00'$
- CURVE #22
 $\Delta I.C.T. = 13.20^\circ$
 $R = 50.00'$
 $PI = 510.8427'$
 $CH = 50.00'$
- CURVE #23
 $\Delta I.C.T. = 13.20^\circ$
 $R = 50.00'$
 $PI = 510.8427'$
 $CH = 50.00'$
- CURVE #24
 $\Delta I.C.T. = 13.20^\circ$
 $R = 50.00'$
 $PI = 510.8427'$
 $CH = 50.00'$
- CURVE #25
 $\Delta I.C.T. = 13.20^\circ$
 $R = 50.00'$
 $PI = 510.8427'$
 $CH = 50.00'$
- CURVE #26
 $\Delta I.C.T. = 13.20^\circ$
 $R = 50.00'$
 $PI = 510.8427'$
 $CH = 50.00'$
- CURVE #27
 $\Delta I.C.T. = 13.20^\circ$
 $R = 50.00'$
 $PI = 510.8427'$
 $CH = 50.00'$
- CURVE #28
 $\Delta I.C.T. = 13.20^\circ$
 $R = 50.00'$
 $PI = 510.8427'$
 $CH = 50.00'$
- CURVE #29
 $\Delta I.C.T. = 13.20^\circ$
 $R = 50.00'$
 $PI = 510.8427'$
 $CH = 50.00'$
- CURVE #30
 $\Delta I.C.T. = 13.20^\circ$
 $R = 50.00'$
 $PI = 510.8427'$
 $CH = 50.00'$
- CURVE #31
 $\Delta I.C.T. = 13.20^\circ$
 $R = 50.00'$
 $PI = 510.8427'$
 $CH = 50.00'$
- CURVE #32
 $\Delta I.C.T. = 13.20^\circ$
 $R = 50.00'$
 $PI = 510.8427'$
 $CH = 50.00'$
- CURVE #33
 $\Delta I.C.T. = 13.20^\circ$
 $R = 50.00'$
 $PI = 510.8427'$
 $CH = 50.00'$
- CURVE #34
 $\Delta I.C.T. = 13.20^\circ$
 $R = 50.00'$
 $PI = 510.8427'$
 $CH = 50.00'$
- CURVE #35
 $\Delta I.C.T. = 13.20^\circ$
 $R = 50.00'$
 $PI = 510.8427'$
 $CH = 50.00'$
- CURVE #36
 $\Delta I.C.T. = 13.20^\circ$
 $R = 50.00'$
 $PI = 510.8427'$
 $CH = 50.00'$
- CURVE #37
 $\Delta I.C.T. = 13.20^\circ$
 $R = 50.00'$
 $PI = 510.8427'$
 $CH = 50.00'$
- CURVE #38
 $\Delta I.C.T. = 13.20^\circ$
 $R = 50.00'$
 $PI = 510.8427'$
 $CH = 50.00'$
- CURVE #39
 $\Delta I.C.T. = 13.20^\circ$
 $R = 50.00'$
 $PI = 510.8427'$
 $CH = 50.00'$
- CURVE #40
 $\Delta I.C.T. = 13.20^\circ$
 $R = 50.00'$
 $PI = 510.8427'$
 $CH = 50.00'$
- CURVE #41
 $\Delta I.C.T. = 13.20^\circ$
 $R = 50.00'$
 $PI = 510.8427'$
 $CH = 50.00'$
- CURVE #42
 $\Delta I.C.T. = 13.20^\circ$
 $R = 50.00'$
 $PI = 510.8427'$
 $CH = 50.00'$
- CURVE #43
 $\Delta I.C.T. = 13.20^\circ$
 $R = 50.00'$
 $PI = 510.8427'$
 $CH = 50.00'$
- CURVE #44
 $\Delta I.C.T. = 13.20^\circ$
 $R = 50.00'$
 $PI = 510.8427'$
 $CH = 50.00'$
- CURVE #45
 $\Delta I.C.T. = 13.20^\circ$
 $R = 50.00'$
 $PI = 510.8427'$
 $CH = 50.00'$
- CURVE #46
 $\Delta I.C.T. = 13.20^\circ$
 $R = 50.00'$
 $PI = 510.8427'$
 $CH = 50.00'$
- CURVE #47
 $\Delta I.C.T. = 13.20^\circ$
 $R = 50.00'$
 $PI = 510.8427'$
 $CH = 50.00'$
- CURVE #48
 $\Delta I.C.T. = 13.20^\circ$
 $R = 50.00'$
 $PI = 510.8427'$
 $CH = 50.00'$
- CURVE #49
 $\Delta I.C.T. = 13.20^\circ$
 $R = 50.00'$
 $PI = 510.8427'$
 $CH = 50.00'$
- CURVE #50
 $\Delta I.C.T. = 13.20^\circ$
 $R = 50.00'$
 $PI = 510.8427'$
 $CH = 50.00'$



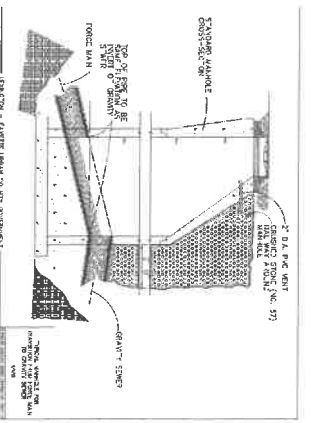
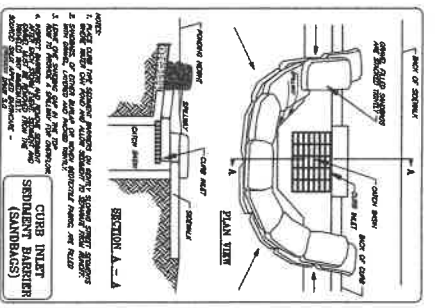
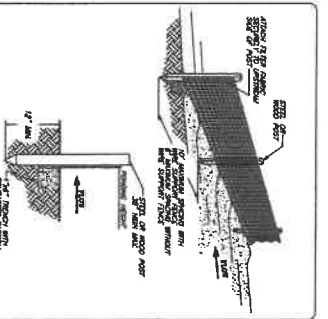
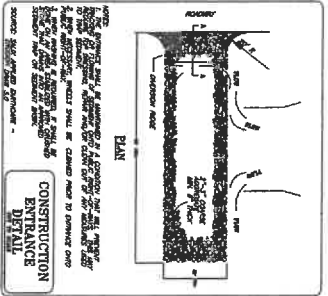
CONSTRUCTED BY NOTE:
 THE INFORMATION CONTAINED HEREIN IS FOR INFORMATIONAL PURPOSES ONLY AND DOES NOT CONSTITUTE A CONTRACT. THE CONTRACTOR SHALL BE RESPONSIBLE FOR OBTAINING ALL NECESSARY PERMITS AND APPROVALS FROM THE APPROPRIATE AGENCIES.

STATION	ELEVATION	DESCRIPTION
24+00	977.1	PVC STA 24+00.00
24+00	976.18	PVC ELEV 976.18
24+50	978.1	PVI STA 24+75.00
24+50	977.06	PVI ELEV 976.93
24+50	978.2	STA 24+85.08
24+50	978.2	STA 35+18.58
24+50	978.23	ELEV 978.23
25+00	985.1	PVI STA 25+50.00
25+00	981.36	PVC ELEV 981.36
26+00	985.0	PVI STA 26+50.00
26+00	983.0	PVI ELEV 983.0
26+50	987.0	PVI STA 26+50.00
26+50	985.0	PVI ELEV 987.31
27+00	987.0	PVI STA 27+50.00
27+00	985.0	PVC ELEV 985.01
28+00	987.0	PVI STA 28+50.00
28+00	985.0	PVC ELEV 985.01
28+50	987.0	PVI STA 28+50.00
28+50	985.0	PVC ELEV 985.01
29+00	987.0	PVI STA 29+50.00
29+00	985.0	PVC ELEV 985.01
29+50	987.0	PVI STA 29+50.00
29+50	985.0	PVC ELEV 985.01
30+00	987.0	PVI STA 30+50.00
30+00	985.0	PVC ELEV 985.01
30+50	987.0	PVI STA 30+50.00
30+50	985.0	PVC ELEV 985.01
31+00	987.0	PVI STA 31+50.00
31+00	985.0	PVC ELEV 985.01
31+50	987.0	PVI STA 31+50.00
31+50	985.0	PVC ELEV 985.01
32+00	987.0	PVI STA 32+50.00
32+00	985.0	PVC ELEV 985.01
32+50	987.0	PVI STA 32+50.00
32+50	985.0	PVC ELEV 985.01
33+00	987.0	PVI STA 33+50.00
33+00	985.0	PVC ELEV 985.01
33+50	987.0	PVI STA 33+50.00
33+50	985.0	PVC ELEV 985.01
34+00	987.0	PVI STA 34+50.00
34+00	985.0	PVC ELEV 985.01
34+50	987.0	PVI STA 34+50.00
34+50	985.0	PVC ELEV 985.01
35+00	987.0	PVI STA 35+50.00
35+00	985.0	PVC ELEV 985.01
35+50	987.0	PVI STA 35+50.00
35+50	985.0	PVC ELEV 985.01
36+00	987.0	PVI STA 36+50.00
36+00	985.0	PVC ELEV 985.01
36+50	987.0	PVI STA 36+50.00
36+50	985.0	PVC ELEV 985.01
37+00	987.0	PVI STA 37+50.00
37+00	985.0	PVC ELEV 985.01
37+50	987.0	PVI STA 37+50.00
37+50	985.0	PVC ELEV 985.01
38+00	987.0	PVI STA 38+50.00
38+00	985.0	PVC ELEV 985.01
38+50	987.0	PVI STA 38+50.00
38+50	985.0	PVC ELEV 985.01
39+00	987.0	PVI STA 39+50.00
39+00	985.0	PVC ELEV 985.01
39+50	987.0	PVI STA 39+50.00
39+50	985.0	PVC ELEV 985.01
40+00	987.0	PVI STA 40+50.00
40+00	985.0	PVC ELEV 985.01
40+50	987.0	PVI STA 40+50.00
40+50	985.0	PVC ELEV 985.01
41+00	987.0	PVI STA 41+50.00
41+00	985.0	PVC ELEV 985.01
41+50	987.0	PVI STA 41+50.00
41+50	985.0	PVC ELEV 985.01
42+00	987.0	PVI STA 42+50.00
42+00	985.0	PVC ELEV 985.01
42+50	987.0	PVI STA 42+50.00
42+50	985.0	PVC ELEV 985.01
43+00	987.0	PVI STA 43+50.00
43+00	985.0	PVC ELEV 985.01
43+50	987.0	PVI STA 43+50.00
43+50	985.0	PVC ELEV 985.01
44+00	987.0	PVI STA 44+50.00
44+00	985.0	PVC ELEV 985.01
44+50	987.0	PVI STA 44+50.00
44+50	985.0	PVC ELEV 985.01
45+00	987.0	PVI STA 45+50.00
45+00	985.0	PVC ELEV 985.01
45+50	987.0	PVI STA 45+50.00
45+50	985.0	PVC ELEV 985.01
46+00	987.0	PVI STA 46+50.00
46+00	985.0	PVC ELEV 985.01
46+50	987.0	PVI STA 46+50.00
46+50	985.0	PVC ELEV 985.01
47+00	987.0	PVI STA 47+50.00
47+00	985.0	PVC ELEV 985.01
47+50	987.0	PVI STA 47+50.00
47+50	985.0	PVC ELEV 985.01
48+00	987.0	PVI STA 48+50.00
48+00	985.0	PVC ELEV 985.01
48+50	987.0	PVI STA 48+50.00
48+50	985.0	PVC ELEV 985.01
49+00	987.0	PVI STA 49+50.00
49+00	985.0	PVC ELEV 985.01
49+50	987.0	PVI STA 49+50.00
49+50	985.0	PVC ELEV 985.01
50+00	987.0	PVI STA 50+50.00
50+00	985.0	PVC ELEV 985.01
50+50	987.0	PVI STA 50+50.00
50+50	985.0	PVC ELEV 985.01



NOTE:
CONNECTION TO EXISTING INFILTRATION TRENCH SHALL BE MADE AT THE LOCATION OF THE VALVE. THE CONNECTION SHALL BE MADE IN THE FIELD.

NOTE:
ALL SANDWICH PANELS TO BE INSTALLED WITH A MINIMUM COVER OF 24 INCHES WITH A MINIMUM OF 6 INCHES ROCK-TO-ROCK AND 12 INCHES ABOVE THE DISTRIBUTION SHAFT. THE DISTRIBUTION SHAFT SHALL NOT CONTAIN ANY ROCK OR OTHER DEBRIS. MINIMUM 12 INCHES IN ALL DIRECTIONS.



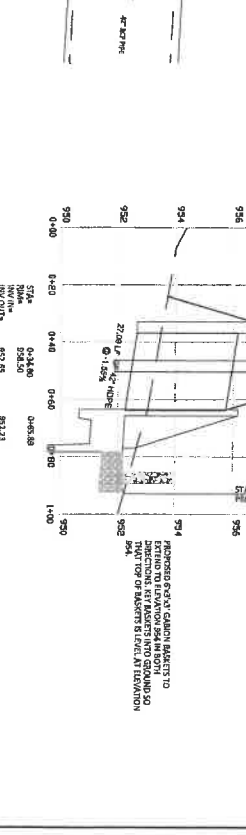
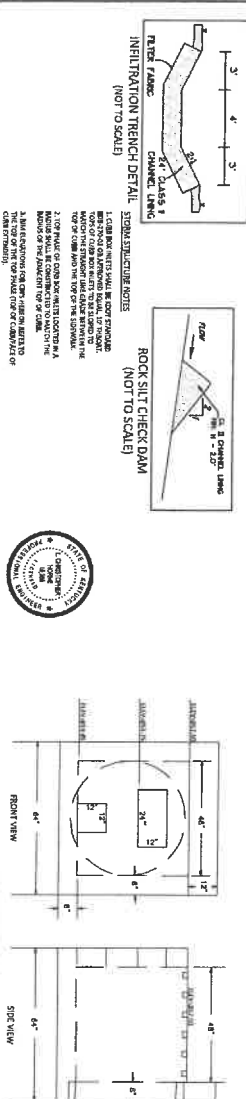
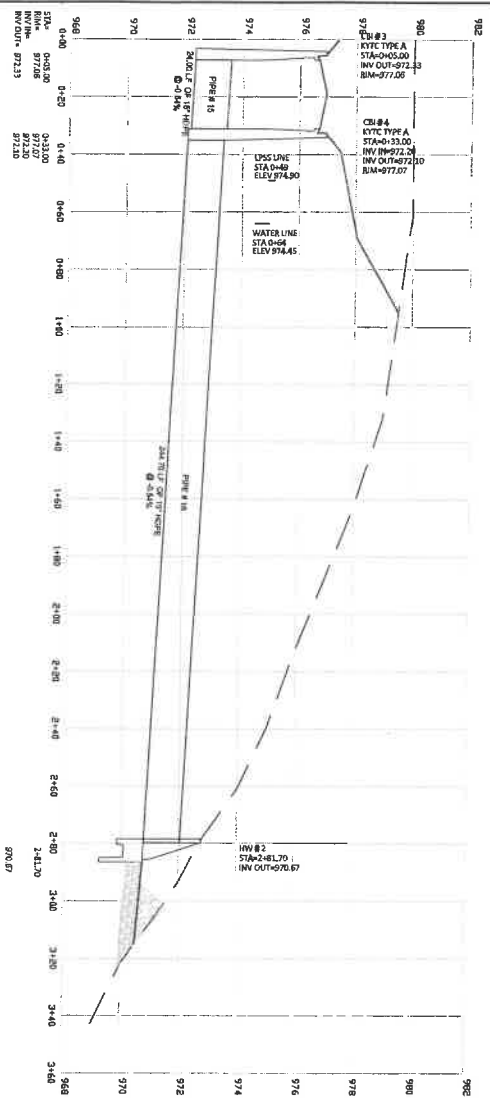
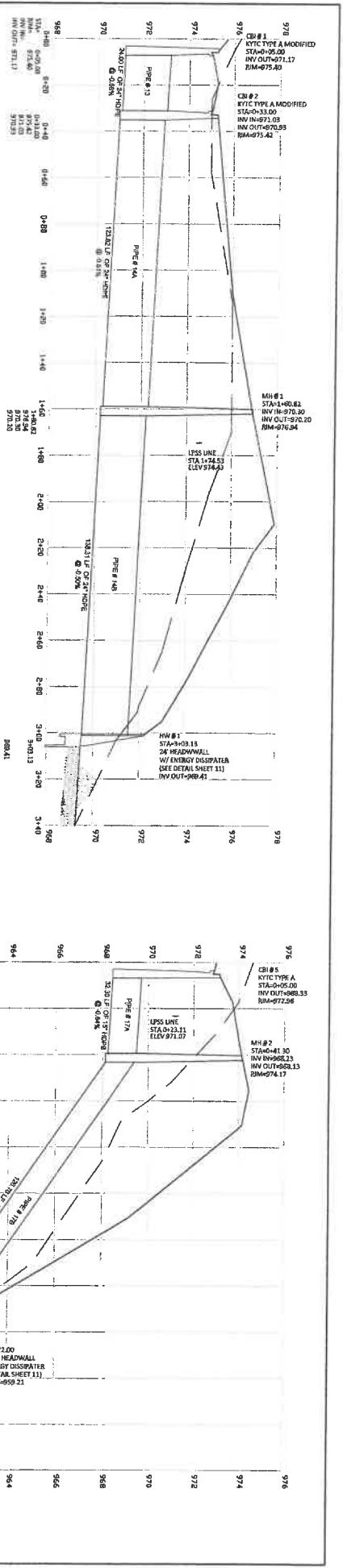
NO.	REVISIONS	BY	DATE
1			
2			
3			
4			
5			
6			
7			
8			
9			
10			
11			
12			
13			
14			
15			
16			
17			
18			
19			
20			
21			
22			
23			
24			
25			
26			
27			
28			
29			
30			
31			
32			
33			
34			
35			
36			
37			
38			
39			
40			
41			
42			
43			
44			
45			
46			
47			
48			
49			
50			
51			
52			
53			
54			
55			
56			
57			
58			
59			
60			
61			
62			
63			
64			
65			
66			
67			
68			
69			
70			
71			
72			
73			
74			
75			
76			
77			
78			
79			
80			
81			
82			
83			
84			
85			
86			
87			
88			
89			
90			
91			
92			
93			
94			
95			
96			
97			
98			
99			
100			

DATE: 4/26
SCALE: H: 1"=50', V: 1"=5'

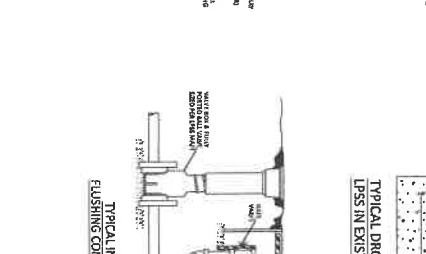
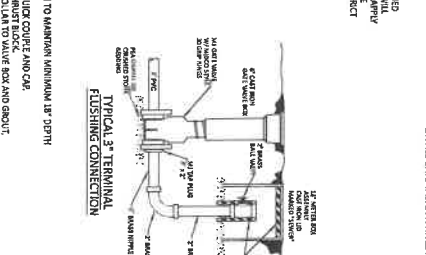
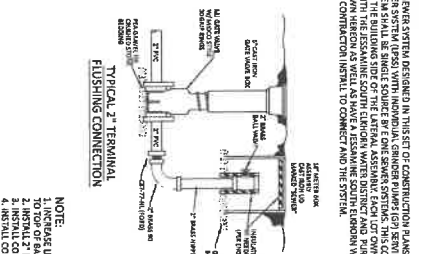
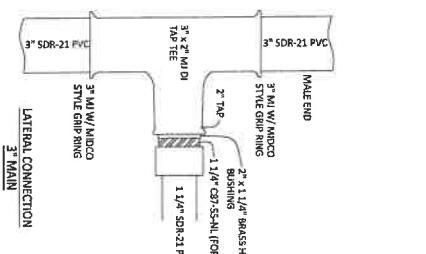
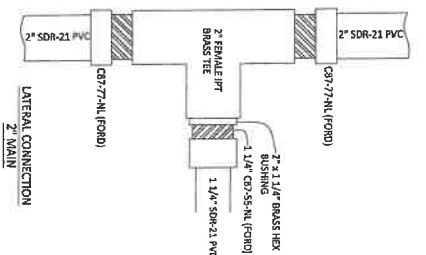
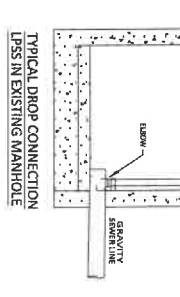
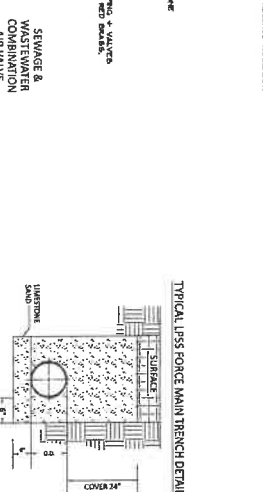
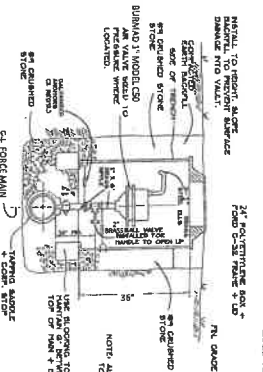
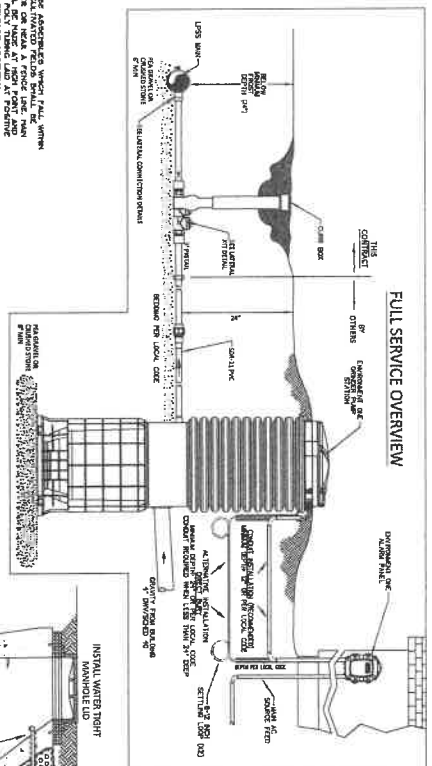
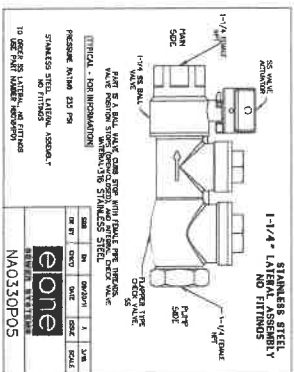
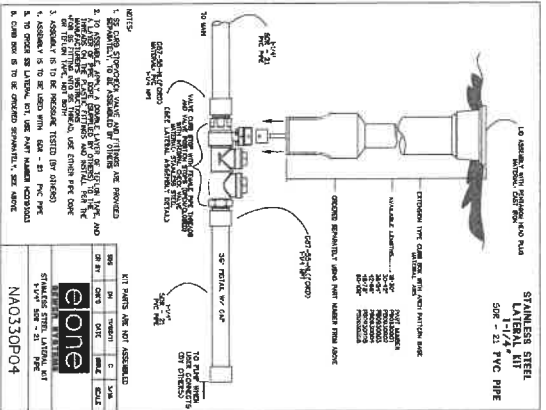
DRAKES LANDING - UNITS 5
LONG RIDGE PLANTATION, LLC
CLAYS HILL ROAD, JESSAMINE COUNTY, KENTUCKY

HORNE ENGINEERING, INC.
238 BENTLEY PARKWAY, LOUISIANA, MISSISSIPPI
850 BENTLEY PARKWAY, LOUISIANA, MISSISSIPPI
(504) 885-5441 FAX (504) 885-5180

SANITARY PROFILES AND DETAILS
SHEET 7 OF 12



NO.	REVISION	DATE	SCALE	DRAKES LANDING - UNIT 5 LONG RIDGE PLANTATION, LLC CLAYS HILL ROAD, ISSANNOE COUNTY, KENTUCKY	HORNE ENGINEERING, INC. ENGINEERS: FRANKLIN L. HORN, L.E.C. 2000000000 228 SOUTH MAIN STREET - JACKSONVILLE, NC 28534 803) 556-0444 FAX 803) 556-0100	STORM PROFILES AND DETAILS	SHEET 8 OF 12
-----	----------	------	-------	---	--	-------------------------------	------------------



IPS NOTE:
THE SANITARY SEWER SYSTEM DESIGNED IN THIS SET OF CONSTRUCTION PLANS IS A LOW VOLUME SYSTEM. THE SYSTEM SHALL BE DESIGNED TO MAINTAIN A MINIMUM OF 1.5 FEET OF COVER OVER THE TOP OF THE LATERAL ASSEMBLY. EACH LIFT COVER SHALL HAVE A MINIMUM OF 1.5 FEET OF COVER. THE SYSTEM SHALL BE DESIGNED TO MAINTAIN A MINIMUM OF 1.5 FEET OF COVER OVER THE TOP OF THE LATERAL ASSEMBLY. EACH LIFT COVER SHALL HAVE A MINIMUM OF 1.5 FEET OF COVER. THE SYSTEM SHALL BE DESIGNED TO MAINTAIN A MINIMUM OF 1.5 FEET OF COVER OVER THE TOP OF THE LATERAL ASSEMBLY. EACH LIFT COVER SHALL HAVE A MINIMUM OF 1.5 FEET OF COVER.

