



## Professional Engineering Services Proposal

**Contract 1:** Roadway Corridor and Intersection Design/Planning

**Contract 4:** Structures or Bridge Design

**Contract 5:** Pedestrian, Bike or Multimodal Trail Design/Planning

**Contract 8:** Construction Inspection

RFP #13-2014

March 26, 2014



Lexington-Fayette Urban County Government  
Lexington, KY



engineering | architecture | geospatial

# Statement of Qualifications

## Professional Engineering Services

### RFP #13-2014

## Lexington-Fayette Urban County Government

### Table of Contents

Section 1.0	Transmittal Letter
Section 2.0	Contract 1 – Roadway Corridor and Intersection Design/Planning
Section 3.0	Contract 4 – Structures or Bridge Design
Section 4.0	Contract 5 – Pedestrian, Bike or Multimodal Trail Design/Planning
Section 5.0	Contract 8 – Construction Inspection
Section 6.0	Additional LFUCG Proposal Forms
	<ul style="list-style-type: none"><li>▪ Proposal Form and Addenda Acknowledgement</li><li>▪ General Provisions Form</li><li>▪ Affidavit</li><li>▪ Equal Opportunity Agreement</li><li>▪ Workforce Analysis Form</li><li>▪ Good Faith Efforts Form</li><li>▪ GRW Affirmative Action Plan</li><li>▪ GRW Certificate of Liability Insurance</li></ul>

**SECTION 1.0** | **Transmittal Letter**



GRW | engineering | architecture | geospatial  
801 Corporate Drive • Lexington, KY 40503  
859.223.3999 • www.grwinc.com

March 25, 2014

Ms. Theresa Maynard, Buyer Senior  
Division of Central Purchasing  
Lexington-Fayette Urban County Government  
Room 338, Government Center  
200 East Main Street  
Lexington, KY 40507

Re: RFP #13-2014: Request for Qualifications for Professional Engineering Services

Dear Ms. Maynard and Selection Committee Members:

GRW has a long history of providing planning, design, construction administration and inspection services for municipal infrastructure projects. Our comprehensive, in-house services assure a quality product, and our business philosophy of providing *close, personal service* will result in a smooth project experience for LFUCG.

The attached SOQ summarizes GRW's applicable experience for the following contracts:

- Contract 1 – Roadway Corridor and Intersection Design/Planning
- Contract 4 – Structures or Bridge Design
- Contract 5 – Pedestrian, Bike or Multimodal Trail Design/Planning
- Contract 8 – Construction Inspection

Headquartered in Lexington, GRW has more than 140 employees including transportation, civil, structural and electrical/lighting engineers, surveyors and construction administration and inspection personnel at this location. Chapman Technical Group, a recently acquired, wholly owned subsidiary of GRW, includes landscape architecture professionals who are currently working with GRW's engineering staff on a streetscape project in Covington, KY.

Please contact me if you have any questions regarding our experience or qualifications document. GRW certainly looks forward to continuing our 40+ year working relationship with LFUCG.

Sincerely,

  
Harvey H. Helm, PE, LEED AP, PLS  
Vice President

**SECTION 2.0**

**Contract 1 – Roadway  
Corridor and Intersection  
Design/Planning**

## 2.0 Contract 1: Roadway Corridor and Intersection Design/Planning

### Firm Qualifications

GRW was founded in 1965 by Mr. G. Reynolds Watkins to provide professional design services to federal, state, municipal and private industry clients. Today GRW has grown to become a full-service engineering, architectural and geospatial services firm with a staff of more than 250 professionals and offices in Kentucky, Indiana, Ohio, Tennessee and West Virginia. Watkins' insistence on technical excellence and personal service lives on as the guiding principle at GRW. **This dedication to service has resulted in repeat clients providing 90 percent of GRW's current workload.**

GRW offers comprehensive technical expertise for all types of infrastructure from concept design through construction administration and inspection. **Our wide range of professional services includes:**

- Transportation Engineering
- Civil/Site Engineering
- Electrical Engineering
- Mechanical Engineering
- Structural Engineering
- Water, Wastewater and Stormwater System Engineering
- Architecture
- Landscape Architecture
- Master Planning
- Aerial Mapping and Surveying
- Geographic Information Services
- GPS and Conventional Surveying
- LiDAR (Aerial, Mobile, and Terrestrial)
- Construction Administration and Resident Project Representation (Inspection)
- Cost Estimating
- Sustainable Design

Experienced with a variety of transportation projects, GRW has completed large roadway and bridge construction projects and federal aid-funded Local Public Agency projects, such as multi-use trails and sidewalks. Our Kentucky Transportation Cabinet experience includes the design of hundreds of miles of streets, roads, and highways, as well as associated sidewalks, bike lanes, and over the past dozen years, GRW has completed more than \$300,000,000 in transportation projects.

### Partial Experience Summary for Roadway Corridor and Intersection Design/Planning

- Eastland Parkway-New Circle Road Intersection Improvements, Lexington, KY
- Liberty/Todds Road ( KY 1927) Section 2, Lexington, KY
- Red Mile Road Widening, Lexington, KY
- Rose Street Extension, Lexington, KY
- Polo Club Boulevard Connection, Lexington, KY
- Cayton Road Extension, Boone County, KY



GRW is KYTC-prequalified in 17 categories including:

- Urban Roadway Design
- Rural Roadway Design
- Traffic Engineering
- Road Centerline Data Collection
- Highway Planning
- Structural Design (Spans under 500')
- Pedestrian and Bicycle Facility Planning & Design
- Electrical Engineering Roadway Lighting
- Highway Noise
- EIS Writing & Coordination
- Construction Project Supervision
- Surveying



- Crossfield Drive Extension, Versailles, KY
- Applewood Centre Roundabout Phase I, Anderson, IN
- 6th Street and Scott Boulevard Improvements, Covington, KY
- Downtown Revitalization/Roundabout, Hodgenville, KY
- State Route 32 Reconstruction and Streetscape Project, Yorktown, IN (Indiana DOT)
- Indiana Gateway Industrial Park State Route 1 Intersection Design, Wayne County, IN
- Keeneland Race Course New Entrance and Access Road, Lexington, KY
- Hurstbourne Parkway Improvements, Multiple Segments: Westport to Brownsboro Roads, Linn Station Road to Timberwood Circle, Taylorsville to Linn Station Roads, Blairwood Drive to Linn Station Road, Bardstown to Fern Valley Roads, Louisville, KY
- SR 38 Heritage Way North Intersection Development, Pendleton, IN



## Subconsultants

**Hall-Harmon Engineers, Inc. (HHE)** is a Lexington, Kentucky firm specializing in civil engineering and land surveying with major emphasis in transportation facilities, site development, site utilities and land surveying. HHE has extensive experience with providing engineering design and surveying services on various types of projects for the Lexington-Fayette Urban County Government (LFUCG) as both prime consultant and as a subconsultant which include surveying, roadway design, bike lane/trail design, storm water and sanitary sewer design in addition to being very familiar with LFUCG Practices and Policies, Standard Drawings and Infrastructure Manuals. HHE – a **certified DBE/WBE** with Kentucky Transportation Cabinet (KYTC) for the past fifteen years – is prequalified with KYTC to perform the following services: Rural Roadway Design, Urban Roadway Design, Surveying, Pedestrian and Bicycle Facility Planning & Design, Airport Design, Airport Master Planning, and UST & HAZMAT Site Analysis / Preliminary Site Assessment.

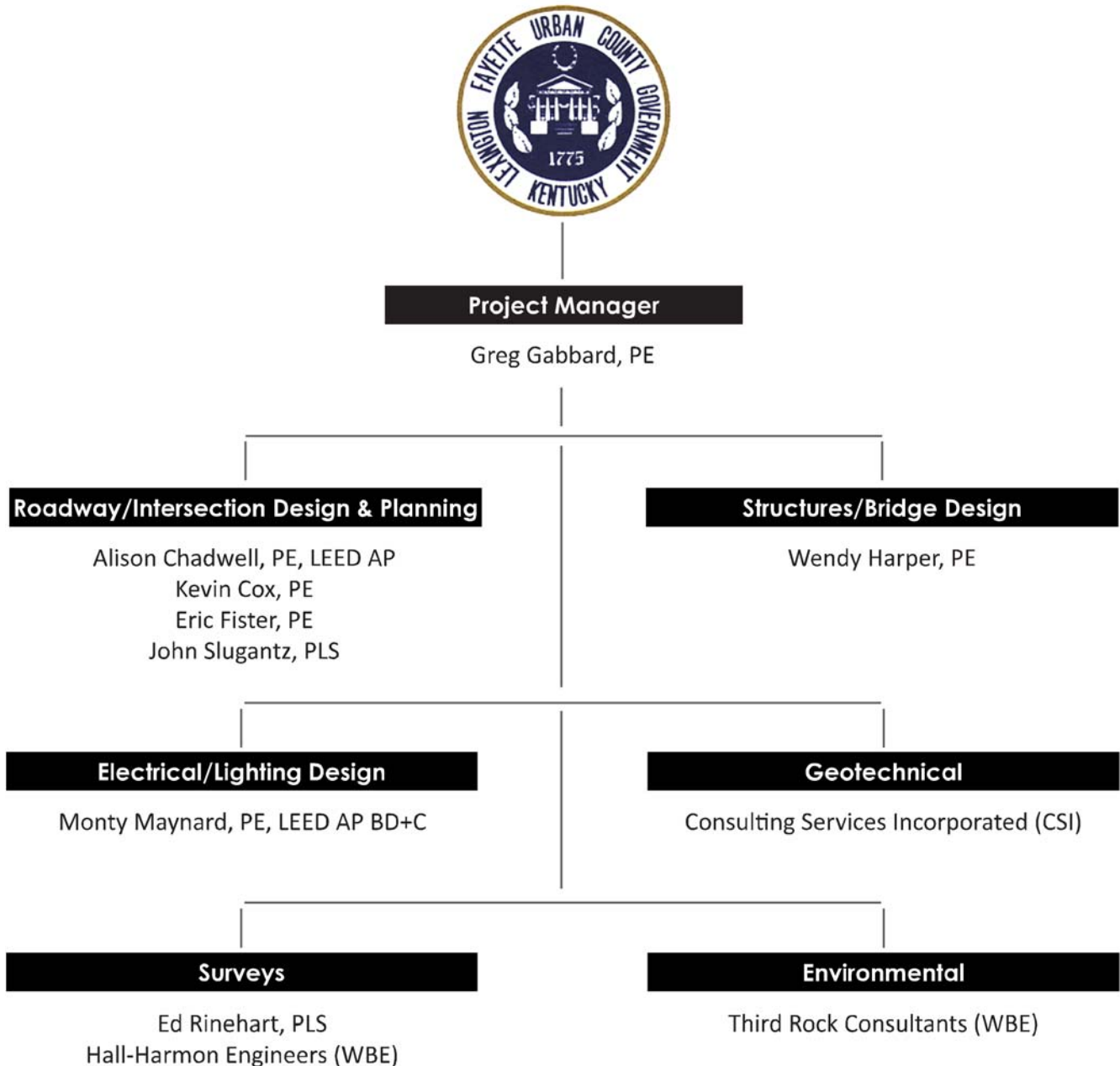
**Third Rock Consultants, LLC**, is a certified woman-owned business enterprise (WBE) with offices in Lexington and Louisville, Kentucky; and Nashville and Knoxville, Tennessee. Established in 2000, Third Rock is recognized as a leading environmental firm in the region, achieving this distinction through a combination of superior technical skills and commitment to meeting our clients' needs. Third Rock's services have long included environmental engineering design, biological and ecological analyses, environmental permitting and mitigation, and NEPA documentation, but we are proud to announce that we now offer construction management and landscape architecture services as well.

**Consulting Services Incorporated**, a designated Small Business by the SBA, is locally owned and headquartered in Lexington with 42 employees. The firm's staff of professionals have over 300 years of combined experience in the geotechnical, construction and materials engineering, testing and IBC special inspection fields. CSI provides the following geotechnical and engineering services: geotechnical exploration/soils reports; site assessments for permitting/civil design; pavement studies and design; site specific seismic studies for International Building Code (IBC); geophysical studies; and soil and rock drilling/sampling. CSI's in-house materials laboratory is AASHTO (AMRL/AAP R-18), US Army Corp of Engineers and Kentucky Transportation Cabinet certified to provide testing for concrete, soils, aggregates, masonry, asphalt and steel.

## Project Team

For this contract, we have carefully selected a number of GRW staff members based on their related experience and expertise in the various services required. An organizational chart illustrating GRW team members, as well as DBE subconsultants, is provided below.

Key project team member resumes are also included in this section. Employee office locations are noted on the resumes. We understand that your selection criteria involves the evaluation of team members' relevant work within the last five years; therefore, the year of project completion is listed at the end of each project example provided on GRW's resumes.





# Greg Gabbard, PE, LSIT

## GRW Project Manager



**Office Location:** Lexington

**Years of Experience/Years with GRW:** 28/18

### Education

B.S., Civil Engineering, 1986, University of Kentucky

### Registration

Professional Engineer: KY, WV, GA, OH

Licensed Surveyor in Training: KY

### Professional Affiliations and Training

ODOT Traffic Academy Certification: Right-of Way Plan Development

### Qualifications and Similar Project Experience

Mr. Gabbard is a Senior Highway Engineer and Project Manager at GRW. His responsibilities include all highway design elements, survey coordination and client communication. He leads the design team and makes the critical decisions for geometrics, drainage, right of way, traffic control, pavement design, utilities, etc. Mr. Gabbard has corresponded with various local, state, and federal clients to ensure complete and timely delivery of the desired product. A few of his projects include:

**Lexington Liberty/Todds Road (KY 1927) Section 2, Lexington, KY** - Project Manager. Final design services for the widening to three lanes of a 1.6-mile section 2 of KY 1927 Liberty/Todds Road in Fayette County from I-75 to Andover Forest Drive. Closely coordinated with the LFUCG Division of Engineering and the Kentucky Department of Highways, the project reduces congestion and improves safety and includes a typical three-lane urban roadway section with bicycle lanes, sidewalks and handicap ramps; center two-way left turn lane and additional travel lanes and right turn lanes; curb and gutters, and roadway drainage primarily via storm sewers. Included field data collection and survey work. (2015)

**Lexington Polo Club Boulevard Connection, Lexington, KY** - Project Manager. Survey and final design services for connection of two pieces of Polo Club Boulevard in Fayette County from Deer Haven Lane to Todds Road. Project, including 200'-long, double 8' x 4' box culvert, new curb/gutter and landscaping enhancements, will complete critical section of boulevard roadway system. (2014)

**Versailles Crossfield Drive Extension, Versailles, KY** - Project Manager. Corridor planning and design for an approximately 0.5-mile connector road between Lexington Street and US 60 Bypass in Versailles to relieve nearby congestion and create opportunities for infill development. Documents included typical sections and details, right-of-way plans and acquisition, plans and profiles, hydraulics, cross sections, cost estimates, surveying, specifications and bidding documents. (2012)

**Kentucky Transportation Cabinet U.S. 27, Garrard County, KY** - Project Manager. Design for Phase I of 6 alternate alignments for improvement of 5.2 miles of the US 27 corridor through gently to steeply rolling hills within Garrard County, involving over 300 parcels researched for right of way assessment for four lanes with a 40' depressed median. Involved consideration of a Civil War Site, Camp Dick Robinson, in determining a Preferred Alternate. (2012)

**Kentucky Transportation Cabinet KY 69 Relocation, Hawesville, KY** - Project Manager. Phase 1 design plan to provide new 0.8-mile route for heavy truck traffic and congestion out of downtown Hawesville. Proposed improvements consist of a new rural and urban route developed with a design speed of 45 and 35 mph, respectively. Shoulder width was reduced width from 12' (10' paved) to 8' (6' paved) as a practical solution, increasing safety, and reducing construction and right of way costs. A 6.0% mainline grade was recommended to maximize safety, particularly considering the anticipated truck traffic. (2008)

# Alison Chadwell, PE, LEED AP

## GRW Transportation Engineer



**Office Location:** Lexington

**Years of Experience/Years with GRW:** 12/9

### Education

B.S., Civil Engineering, 2003, University of Kentucky

### Registration

Professional Engineer: KY

Licensed Surveyor in Training: KY

LEED Accredited Professional

### Qualifications and Similar Project Experience

Ms. Chadwell has more than a decade of experience and is proficient with AutoCAD, SurvCAD, StormCAD, WaterCAD, Heastod Method's products, and SEDCAD 4. A few of her relevant projects include:

**Lexington Liberty/Todds Road (KY 1927) Section 2, Lexington, KY** - Project Engineer. Final design services for the widening to three lanes of a 1.6-mile section 2 of KY 1927 Liberty/Todds Road in Fayette County from I-75 to Andover Forest Drive. Closely coordinated with the LFUCG Division of Engineering and the Kentucky Department of Highways, the project reduces congestion and improves safety and includes a typical three-lane urban roadway section with bicycle lanes, sidewalks and handicap ramps; center two-way left turn lane and additional travel lanes and right turn lanes; curb and gutters, and roadway drainage primarily via storm sewers. Included field data collection and survey work. (2015)

**Lexington Polo Club Boulevard Connection, Lexington, KY** - Project Engineer. Survey and final design services for connection of two pieces of Polo Club Boulevard in Fayette County from Deer Haven Lane to Todds Road. Project, including 200'-long, double 8' x 4' box culvert, new curb/gutter and landscaping enhancements, will complete critical section of boulevard roadway system as envisioned in Lexington-Fayette Urban County Planning Commission Expansion Area Master Plan. (2014)

**Versailles Crossfield Drive Extension, Versailles, KY** - Project Engineer. Corridor planning and design for an approximately 0.5-mile connector road between Lexington Street and US 60 Bypass in Versailles to relieve nearby congestion and create opportunities for infill development. Project included coordination with existing and proposed adjacent land uses, the City of Versailles, the land owners, and the Kentucky Transportation Cabinet. Project affects major intersections of the two main arterials and includes a stream crossing and associated environmental permitting. Documents included typical sections and details, right-of-way plans and acquisition, plans and profiles, hydraulics, cross sections, cost estimates, surveying, specifications and bidding documents. (2012)

**McDonalds Site Evaluation and Design, Frankfort, KY** - Project Manager. Site development plans for new restaurant. Pervious pavement and rain gardens were utilized in design to minimize stormwater impact to adjacent properties. (2011)

**The J.M. Smucker Company Drop Lot Site Improvements, Lexington, KY** - Project Manager. Site analysis and design services for paving gravel drop lot at The J.M. Smucker Company's JIF plant in Lexington, KY. Study portion included hydraulic analysis to determine if stormwater conveyance system and detention pond would have capacity required for paved drop lot area. Subsequent site and paving design of asphalt pavement cap provided solution to dust issues at plant which posed a potential contaminant to food processing facility. (2013)

# Kevin Cox, PE

## GRW Transportation Engineer



**Office Location:** Lexington

**Years of Experience/Years with GRW:** 22/16

### Education

B.S., Civil Engineering, 1992, University of Kentucky

### Registration

Professional Engineer: IN, KY, TN, VA

### Professional Affiliations and Training

American Society of Civil Engineers

Kentuckians for Better Transportation

Indiana DOT Certificate of Completion, Right of Way Plan Development

### Qualifications and Similar Project Experience

Mr. Cox has 22 years of experience in the civil and transportation engineering fields. He has used Intergraph MicroStation, InRoads, Highway Capacity Software (HCS), HEC-1, HEC-RAS, Storm CAD, Flow Master, Culvert Master, HYDRAIN and KTDID in his civil engineering designs. His experience includes:

**Lexington Liberty/Todds Road (KY 1927) Section 2, Lexington, KY** – Project Engineer. Final design services for the widening to three lanes of a 1.6-mile section 2 of KY 1927 Liberty/Todds Road in Fayette County from I-75 to Andover Forest Drive. Closely coordinated with the LFUCG Division of Engineering and the Kentucky Department of Highways, the project reduces congestion and improves safety and includes a typical three-lane urban roadway section with bicycle lanes, sidewalks and handicap ramps; center two-way left turn lane and additional travel lanes and right turn lanes; curb and gutters, and roadway drainage primarily via storm sewers. Included field data collection and survey work. (2015)

**Versailles Crossfield Drive Extension, Versailles, KY** – Project Engineer. Corridor planning and design for an approximately 0.5-mile connector road between Lexington Street and US 60 Bypass in Versailles to relieve nearby congestion and create opportunities for infill development. Documents included typical sections and details, right-of-way plans and acquisition, plans and profiles, hydraulics, cross sections, cost estimates, surveying, specifications and bidding documents. (2012)

**Kentucky Transportation Cabinet Flemingsburg Bypass Extension, Flemingsburg, KY** – Project Engineer. Design of extension of a bypass roadway to divert traffic away from downtown and improve connection between KY 11 and KY 57 (Flemingsburg to Tollesboro), continuing the bypass as a 2-lane highway with full-width shoulders. Involved horizontal and vertical alignment, preliminary drainage design, maintenance of traffic, and construction cost estimates. (2013)

**Kentucky Transportation Cabinet U.S. 27, Garrard County, KY** – Project Engineer. Design for Phase I of 6 alternate alignments for improvement of 5.2 miles of the US 27 corridor through gently to steeply rolling hills within Garrard County, involving over 300 parcels researched for right of way assessment for four lanes with a 40' depressed median. Involved consideration of a Civil War Site, Camp Dick Robinson, in determining a Preferred Alternate. (2012)

**Kentucky Transportation Cabinet AA Highway Widening, Mason County, KY** – Project Engineer. Design for Phase I and Phase 2 widening of 4.5 mile section of AA Highway from two to five lanes from the new Maysville Bridge approach intersection west to KY 10 near Fernleaf. Approach roads were designed to provide the most efficient and "sight-distance friendly" intersection conditions possible. Design plans included the outlet end extension of a 7'x7' box culvert. (2014)

# Eric Fister, PE

## GRW Transportation Engineer



**Office Location:** Lexington

**Years of Experience/Years with GRW:** 13/13

### Education

B.S., Civil Engineering, 1997, University of Kentucky

### Registration

Professional Engineer: KY

### Qualifications and Similar Project Experience

Mr. Fister has more than 13 years of experience in civil engineering and highway design. As project engineer and manager for various projects, his responsibilities include designing horizontal and vertical alignments, drainage, entrances, erosion control, and pavement, working closely with highway engineers and other lead designers to actively produce timely and quality designs. His experience includes:

**Lexington Liberty/Todds Road (KY 1927) Section 2, Lexington, KY** - Project Engineer. Final design services for the widening to three lanes of a 1.6-mile section 2 of KY 1927 Liberty/Todds Road in Fayette County from I-75 to Andover Forest Drive. Closely coordinated with the LFUCG Division of Engineering and the Kentucky Department of Highways, the project reduces congestion and improves safety and includes a typical three-lane urban roadway section with bicycle lanes, sidewalks and handicap ramps; center two-way left turn lane and additional travel lanes and right turn lanes; curb and gutters, and roadway drainage primarily via storm sewers. Included field data collection and survey work. (2015)

**Versailles Crossfield Drive Extension, Versailles, KY** - Project Engineer. Corridor planning and design for an approximately 0.5-mile connector road between Lexington Street and US 60 Bypass in Versailles to relieve nearby congestion and create opportunities for infill development. Project affects major intersections of the two main arterials and includes a stream crossing and associated environmental permitting. Documents included typical sections and details, right-of-way plans and acquisition, plans and profiles, hydraulics, cross sections, cost estimates, surveying, specifications and bidding documents. (2012)

**Kentucky Transportation Cabinet KY 69 Relocation, Hawesville, KY** – Project Engineer. Phase 1 design plan to provide new 0.8-mile route for heavy truck traffic and congestion out of downtown Hawesville. Proposed improvements consist of a new rural and urban route developed with a design speed of 45 and 35 mph, respectively. Shoulder width was reduced width from 12' (10' paved) to 8' (6' paved) as a practical solution, increasing safety, and reducing construction and right of way costs. A 6.0% mainline grade was recommended to maximize safety, particularly considering the anticipated truck traffic. (2008)

**Kentucky Transportation Cabinet U.S. 27, Garrard County, KY** – Project Engineer. Design for Phase I of 6 alternate alignments for improvement of 5.2 miles of the US 27 corridor through gently to steeply rolling hills within Garrard County, involving over 300 parcels researched for right of way assessment for four lanes with a 40' depressed median. Involved consideration of a Civil War Site, Camp Dick Robinson, in determining a Preferred Alternate. (2012)

**Kentucky Transportation Cabinet AA Highway Widening, Mason County, KY** – Project Engineer. Design for Phase I and Phase 2 widening of 4.5 mile section of AA Highway from two to five lanes from the new Maysville Bridge approach intersection west to KY 10 near Fernleaf. Approach roads were designed to provide the most efficient and "sight-distance friendly" intersection conditions possible. Design plans included the outlet end extension of a 7'x7' box culvert. (2014)

# John Slugantz, PLS

## GRW Sr. Highway Designer



**Office Location:** Lexington

**Years of Experience/Years with GRW:** 33/30

### Education

A.S., Civil Engineering Technology, 1984, Lexington Community College

### Registration

Professional Surveyor: KY

### Qualifications and Similar Project Experience

With more than three decades of experience, Mr. Slugantz has extensive knowledge of the Kentucky Department of Highways Design and Drainage Manuals and Memorandums, the Standard Drawings, AASHTO guidelines, KYCOGO, and KTDID. Mr. Slugantz utilizes CADD applications to the fullest extent possible and has been instrumental in the development of GRW's standard procedures regarding the setup and management of each highway project's KYCOGO and CADD files. He has developed the construction drawings for many "standard" structures utilizing Intergraph Microstation. These have included I-beam and box beam bridges and culverts. A few of his projects include:

**Lexington Liberty/Todds Road (KY 1927) Section 2, Lexington, KY** - Sr. Highway Designer. Final design services for the widening to three lanes of a 1.6-mile section 2 of KY 1927 Liberty/Todds Road in Fayette County from I-75 to Andover Forest Drive. Closely coordinated with the LFUCG Division of Engineering and the Kentucky Department of Highways, the project reduces congestion and improves safety and includes a typical three-lane urban roadway section with bicycle lanes, sidewalks and handicap ramps; center two-way left turn lane and additional travel lanes and right turn lanes; curb and gutters, and roadway drainage primarily via storm sewers. Included field data collection and survey work. (2015)

**Kentucky Transportation Cabinet KY 69 Relocation, Hawesville, KY** - Sr. Highway Designer. Phase 1 design plan to provide new 0.8-mile route for heavy truck traffic and congestion out of downtown Hawesville. Proposed improvements consist of a new rural and urban route developed with a design speed of 45 and 35 mph, respectively. Shoulder width was reduced width from 12' (10' paved) to 8' (6' paved) as a practical solution, increasing safety, and reducing construction and right of way costs. A 6.0% mainline grade was recommended to maximize safety, particularly considering the anticipated truck traffic. (2008)

**Lexington Polo Club Boulevard Connection, Lexington, KY** - Sr. Highway Designer. Survey and final design services for connection of two pieces of Polo Club Boulevard in Fayette County from Deer Haven Lane to Todds Road. Project, including 200'-long, double 8' x 4' box culvert, new curb/gutter and landscaping enhancements, will complete critical section of boulevard roadway system. (2014)

**Kentucky Transportation Cabinet AA Highway Widening, Mason County, KY** – Sr. Highway Designer. Design for Phase I and Phase 2 widening of 4.5 mile section of AA Highway from two to five lanes from the new Maysville Bridge approach intersection west to KY 10 near Fernleaf. Approach roads were designed to provide the most efficient and "sight-distance friendly" intersection conditions possible. Design plans included the outlet end extension of a 7'x7' box culvert. (2014)

**Kentucky Transportation Cabinet U.S. 27, Garrard County, KY** - Sr. Highway Designer. Design for Phase I of 6 alternate alignments for improvement of 5.2 miles of the US 27 corridor through gently to steeply rolling hills within Garrard County, involving over 300 parcels researched for right of way assessment for four lanes with a 40' depressed median. Involved consideration of a Civil War Site, Camp Dick Robinson, in determining a Preferred Alternate. (2012)

## List of Clients

These references may be contacted to verify the quality of our work and their satisfaction with our performance. GRW believes performance is best measured from the client's perspective. With repeat clients, such as the Lexington-Fayette Urban County Government, the Kentucky Transportation Cabinet and others, providing more than 90 percent of GRW's current workload, we believe this is a testament to our business philosophy of providing high-quality, close, personal service.

### Lexington-Fayette Urban County Government

- Liberty/Todds Road ( KY 1927) Section 2
- Polo Club Boulevard Connection

Keith Lovan, Municipal Engineer Senior  
(859) 258-3478 | klovan@lexingtonky.gov

### Boone County Public Works

- Cayton Road Extension

Gregory Sketch, Director of Public Works  
(859) 334-3600 | GSketch@boonecountyky.org

### City of Hodgenville, KY

- Downtown Revitalization/Roundabout (ACEC Engineering Excellence Honor Award)
- College Street Drainage Basin Stormwater Improvements

Terry Cruse, Mayor  
(270) 358-3832 | hville@windstream.net

### City of Jeffersontown, KY

- Bluegrass Parkway Bicycle and Pedestrian Trail Phases I & II
- Bluegrass Commerce Park Infrastructure Improvements

Matt Meunier, Assistant to the Mayor  
(502) 267-8333 | mmeunier@jeffersontownky.com

### Kentucky Transportation Cabinet, District 5

- Hurstbourne Parkway, Bardstown to Fern Valley Roads (Project of the Year Award, Transportation Category, American Public Works, Kentucky Chapter)
- Hurstbourne Parkway, Linn Station Road to Timberwood Circle
- Hurstbourne Parkway at Shelbyville Road Improvements

Matt Bullock, Chief District Engineer  
(502) 210-5400 | matt.bullock.ky.gov

### City of Versailles, KY

- Crossfield Drive Extension

Bart Miller, Public Works Director  
(859) 873-2245 | bmiller@cityhall.versaillesky.com

### City of Murray, KY

- Murray-Calloway County Middle School Safe Routes to School Sidewalks

Peyton Mastera, Project Administrator  
(270) 762-0350 | Peyton.Mastera@murrayky.gov

### Federal Bureau of Prisons

- Yazoo City U.S. Penitentiary and Satellite Camp Roadways and Bridge

Jody Smith, Project Manager  
(202) 514-6456 | jlsmith@bop.gov

### City of St. Albans, WV\*

- St. Albans Streetscape Phases I-IV

Dick Callaway, Mayor  
(304) 727-2971 | samayor@suddenlinkmail.com

### West Virginia Division of Highways\*

- Meadow River Trail
- Shepherdstown Pedestrian Bicycle Trail
- L&R Trail Phase II
- Chesapeake Sidewalk Project Phase II

Ryan C. Burns, Program Manager  
(304) 558-9297 | Ryan.c.burns@wv.gov

### City of Lewisburg, WV\*

- L&R Trail Phase I
- Lewisburg Sidewalk Phase II

John Manchester, Mayor  
(304) 645-2080 | jmanchester@lewisburg-wv.com

*\*Reference for Chapman Technical Group, a wholly-owned subsidiary of GRW*

## Similar Projects

This section highlights a few recent examples of GRW's accomplishments with projects similar to yours.

### Lexington Liberty/Todds Road ( KY 1927) Section 2

GRW provided design services for the widening of Section 2 of KY 1927 Liberty/Todds Road in Fayette County from I-75 to Andover Forest Drive. The 1.6-mile section is being widened to three lanes, including bicycle lanes, sidewalks and handicap ramps, to reduce congestion and improve safety. The center two-way left turn lane will provide storage for left turn movements throughout the corridor and additional travel lanes and right turn lanes will also be provided where possible at congested areas and major intersections. The existing two-lane bridge over I-75 will be replaced with a five-lane PCI-beam bridge. Curb and gutters will be utilized and roadway drainage will primarily be accommodated in storm sewers. This approach allows the majority of the proposed work to be conducted within the existing right of way. Approximately 77 properties exist along the project corridor, and almost all required right-of-way acquisition and/or temporary easements.

This project also includes a large stream crossing that discharges across the Andover Country Club golf course. Coordination with LFUCG and the KYTC Drainage Division revealed the existing structure and the preliminary design structure were severely undersized. Careful consideration of floodplain issues as well as and construction impacts and aesthetics resulted in selection of a precast concrete arch structure that blends well with its suburban surroundings.

**Project Cost:** \$9,500,000      **Completion Date:** 2015

**Key Team Members:** Greg Gabbard, Kevin Cox, Eric Fister, Alison Chadwell, John Slugantz, Matt Craig, Lisa Vagts, Wendy Harper, Mary Beth Robson

### Lexington Polo Club Boulevard Connection

GRW is providing survey and final design services for the connection of two pieces of Polo Club Boulevard in Fayette County from Deer Haven Lane to Todds Road. The work is being done in close coordination with the LFUCG Division of Engineering and the Kentucky Department of Highways.

This project, including a new 200-long, double 8' x 4' box culvert, curb/gutter and landscaping enhancements, will complete a critical section of a boulevard roadway system as envisioned in the Lexington-Fayette Urban County Planning Commission Expansion Area Master Plan. The first segment involves the intersection with Deer Haven Lane, while the second segment entails the extension of Polo Club to Todds Road along with a suitable connection. The recent announcement by Fayette County Public Schools to open an elementary school in this neighborhood in August 2015 offers considerable incentive to complete these two missing segments of Polo Club Boulevard as soon as possible.

GRW provided conventional field work alongside state-of-the-art LiDAR survey techniques to expedite the mapping delivery. The final engineering design for the two remaining sections of Polo Club Boulevard includes careful establishment of appropriate geometry to tie into the existing roadway and make the most of what has already been built. Spotty existing sidewalk construction will be connected throughout with the application of current ADA standards. Existing utilities have been investigated and mapped to minimize impacts.

This project also includes a large stream crossing at Deer Haven that is surrounded by an area of potential wetland. It is anticipated that a precast structure can be used to minimize impacts to the environment and blend with the local surroundings.

**Project Cost:** \$1,800,000      **Completion Date:** 2014

**Key Team Members:** Greg Gabbard, Alison Chadwell, Mary Beth Robson, John Slugantz

## Versailles Crossfield Drive Extension

GRW completed corridor planning and design for an approximately 0.5-mile connector road between Lexington Street and US 60 Bypass in Versailles to relieve congestion at the nearby intersection and create opportunities for infill development at this gateway to the City. The project included coordination with existing and proposed adjacent land uses, the City of Versailles, the land owners, and the Kentucky Transportation Cabinet. The project affects major intersections of the two main arterials south of Versailles and includes a stream crossing and associated environmental permitting. The project documents included typical sections and details, right-of-way plans and acquisition, plans and profiles, hydraulics, cross sections, cost estimates, surveying, specifications and bidding documents, construction administration and inspection.

**Project Cost:** \$2,000,000

**Completion Date:** 2012

**Key Team Members:** Alison Chadwell, Kevin Cox, Eric Fister, Greg Gabbard, Mary Beth Robson

## Hodgenville Downtown Revitalization

GRW designed a fast-track project renovating the town square to improve traffic flow and increase safety for residents and visitors while maintaining the historical integrity of the town square. The project involved improvements to the central square area of downtown Hodgenville, which is a National Register Historic District, through the design of a roundabout to ease traffic flow and allow visitors to safely visit a monument to Abraham Lincoln at its center. The use of a roundabout, which is a transportation feature not commonly found in the United States, went beyond the typical design to encompass parking areas, splitter islands as crosswalks, all to ensure the safety of both pedestrians and vehicles. Features included signage, parking, brick paver fields, lighting, underground utilities installation (water, sanitary and storm sewer, and electric) and surface drainage. The entire project, including street lights, was designed in accordance with KTC standards since both intersecting roads are state highways. GRW also provided construction administration and inspection services.

**This project received an Engineering Excellence Honor Award from the American Council of Engineering Companies of Kentucky.**

**Project Cost:** \$1,117,633

**Completion Date:** 2007

**Key Team Members:** Kevin Cox, Monty Maynard

## Hurstbourne Parkway, Bardstown to Fern Valley Roads

For this KTC District 5 project, GRW provided the preliminary and final design, and environmental services for the extension of Hurstbourne Parkway from Bardstown Road to Fern Valley Road. It was designed as an urban arterial with a design speed of 80 km/h. To achieve a landscaped parkway effect, a 12-meter raised median was constructed. A 4-lane initial/6-lane ultimate typical section was developed with a 3-meter border; 0.7 meter shared bicycle path was also provided. In addition to the Parkway, GRW designed the realignment and/or improvements to five approaches totaling 2.24 kilometers. Major intersections include Poplar Level Road, Fegenbush Lane, and Bardstown Road.

GRW coordinated the environmental analysis; and completed the analysis of all drainage requirements (culverts, storm sewers, ditches, etc.) and a hydraulic/floodway analysis of the twin 3-span bridge crossing of Fern Creek. Field surveys, which included running control and locating utilities, were also accomplished by GRW.

**This project received the Project of the Year Award, Transportation Category from the American Public Works, Kentucky Chapter.**

**Project Cost:** \$25,000,000

**Completion Date:** 2005

**Key Team Members:** Greg Gabbard, Kevin Cox, John Slugantz



## Local Office

As shown in Attachment 1, GRW and all of our proposed subconsultants have headquarters in Lexington, KY, and 100 percent of the work will be performed by staff in Lexington.

Attachment 1

### Project Team Location(s)

Prime Consultant	Location (City, State)	Date Office Established	Total Number of Employees	No. of Employees expected to work on DOE projects
Headquarters	Lexington, KY	6/22/1964	143	12
Local Office	Lexington, KY	6/22/2964	143	12
PM Location	Lexington, KY			
<b>SubConsultants</b>				
Name:	Hall-Harmon Engineers	Aug. 1994	7	7, if needed
Service Provided	Civil Eng. & Surveying			
Headquarters	Lexington, KY	Aug. 1994	7	7, if needed
Local Office	Lexington, KY	Aug. 1994	7	7, if needed
Name:	Third Rock Consultants	1/1/2001	26	5
Service Provided	Environmental			
Headquarters	Lexington, KY	1/1/2001	24	5
Local Office	Lexington, KY	1/1/2001	24	5
Name:	Consulting Services, Inc.	2009	43	9
Service Provided	Geotechnical			
Headquarters	Lexington, KY	2009	31	9
Local Office	Lexington, KY	2009	31	9

**Notes:**

1. "Headquarters" refers to the corporate office that provides project support to the local office, if applicable. If support comes from multiple locations, use the blank spaces in the form to provide relevant information.
2. Listing of sub-consultants is optional and should only be provided if the prime consultant considers the sub-consultant(s) services to be essential to meeting the required qualifications. In this event, documentation from the subconsultant(s) shall be submitted in the SOQ that provides a commitment to be a part of the prime consultant's team in providing the stated services. In such cases, for the purpose of evaluating the proposals, committed sub-consultants will be considered to be part of the prime consultant's workforce. Prime consultants face potential disqualification from future work if DOE finds that the identified sub-consultants are not being utilized to deliver assigned work products.

## Disadvantaged Business Enterprise (DBE) Involvement

GRW understands and agrees with LFUCG's 10% MWDBE goal. For this contract, we propose to use the certified WBE subconsultants Hall-Harmon Engineers and Third Rock Consultants to meet your goals.



### LFUCG MWDBE PARTICIPATION FORM Bid/RFP/Quote Reference # 13-2014

The MWDBE subcontractors listed have agreed to participate on this Bid/RFP/Quote. If any substitution is made or the total value of the work is changed prior to or after the job is in progress, it is understood that those substitutions must be submitted to Central Purchasing for approval immediately.

MWDBE Company, Name, Address, Phone, Email	Work to be Performed	Total Dollar Value of the Work	% Value of Total Contract
1. Hall-Harmon Engineers 1081 Dove Run Rd, Ste 203 Lexington, KY 40502 (859) 269-3150 Kitty.Hall-Harmon@HHEnet.com	Surveying	TBD	5%
2. Third Rock Consultants, LLC 2526 Regency Rd, Ste 180 Lexington, KY 40503 859.977.2000 akerley@thirdrockconsultants.com	Environmental	TBD	5%
3.			
4.			

The undersigned company representative submits the above list of MWDBE firms to be used in accomplishing the work contained in this Bid/RFP/Quote. Any misrepresentation may result in the termination of the contract and/or be subject to applicable Federal and State laws concerning false statements and false claims.

GRW  
 \_\_\_\_\_  
**Company**

March 25, 2014  
 \_\_\_\_\_  
**Date**

*Ken D. Silvers*  
 \_\_\_\_\_  
**Company Representative**

President  
 \_\_\_\_\_  
**Title**

## **SECTION 3.0**

### **Contract 4 – Structures or Bridge Design**

## 3.0 Contract 4: Structures or Bridge Design

### Firm Qualifications

GRW was founded in 1965 by Mr. G. Reynolds Watkins to provide professional design services to federal, state, municipal and private industry clients. Today GRW has grown to become a full-service engineering, architectural and geospatial services firm with a staff of more than 250 professionals and offices in Kentucky, Indiana, Ohio, Tennessee and West Virginia. Watkins' insistence on technical excellence and personal service lives on as the guiding principle at GRW. **This dedication to service has resulted in repeat clients providing 90 percent of GRW's current workload.**

GRW offers comprehensive technical expertise for all types of infrastructure from concept design through construction administration and inspection. **Our wide range of professional services includes:**

- Transportation Engineering
- Civil/Site Engineering
- Electrical Engineering
- Mechanical Engineering
- Structural Engineering
- Water, Wastewater and Stormwater System Engineering
- Architecture
- Landscape Architecture
- Master Planning
- Aerial Mapping and Surveying
- Geographic Information Services
- GPS and Conventional Surveying
- LiDAR (Aerial, Mobile, and Terrestrial)
- Construction Administration and Resident Project Representation (Inspection)
- Cost Estimating
- Sustainable Design

Experienced with a variety of transportation projects, GRW has completed large roadway and bridge construction projects and federal aid-funded Local Public Agency projects, such as multi-use trails and sidewalks. Our Kentucky Transportation Cabinet experience includes the design of hundreds of miles of streets, roads, and highways, as well as associated sidewalks, bike lanes, and over the past dozen years, GRW has completed more than \$300,000,000 in transportation projects.

### Partial Experience Summary for Structures or Bridge Design

- Liberty/Todds Road ( KY 1927) Section 2 with 5-lane PCI-beam Bridge, Lexington, KY
- Floyd's Fork Wastewater Treatment Plant Access Road and Bridge, Louisville, KY
- Indiana DOT State Route 5 Structure Replacement, Huntington County, IN
- Indiana Gateway Industrial Park Martindale Creek Drainage Improvements (with con-span arch bridge), Wayne County, IN



GRW is KYTC-prequalified in 17 categories including:

- Structural Design (Spans under 500')
- Urban Roadway Design
- Rural Roadway Design
- Traffic Engineering
- Road Centerline Data Collection
- Highway Planning
- Pedestrian and Bicycle Facility Planning & Design
- Electrical Engineering Roadway Lighting
- Highway Noise
- EIS Writing & Coordination
- Construction Project Supervision
- Surveying



- New 5-Lane Arterial and Collector Streets with Single-span and Two 3-span Bridges, Corbin, KY
- Georgetown Bypass with Two Level 2 Twin, Prestressed I-beam Bridges and Two Box Culverts, Georgetown, KY
- Southwest Bypass with Twin 3-span Bridges and Three Box Culverts, Hopkinsville, KY
- I71/KY 393 Interchange with 2-span Bridge and Two Box Culvert Extensions, Oldham County, KY
- U.S. 127 with 6-span, Modified Type IV PCI Beam Bridge, Owen County, KY
- U.S. 62 with 5-span, PCI Beam Bridge, Nelson County, KY



## Subconsultants

**Hall-Harmon Engineers, Inc. (HHE)** is a Lexington, Kentucky firm specializing in civil engineering and land surveying with major emphasis in transportation facilities, site development, site utilities and land surveying. HHE has extensive experience with providing engineering design and surveying services on various types of projects for the Lexington-Fayette Urban County Government (LFUCG) as both prime consultant and as a subconsultant which include surveying, roadway design, bike lane/trail design, storm water and sanitary sewer design in addition to being very familiar with LFUCG Practices and Policies, Standard Drawings and Infrastructure Manuals. HHE – **a certified DBE/WBE** with Kentucky Transportation Cabinet (KYTC) for the past fifteen years – is prequalified with KYTC to perform the following services: Rural Roadway Design, Urban Roadway Design, Surveying, Pedestrian and Bicycle Facility Planning & Design, Airport Design, Airport Master Planning, and UST & HAZMAT Site Analysis / Preliminary Site Assessment.

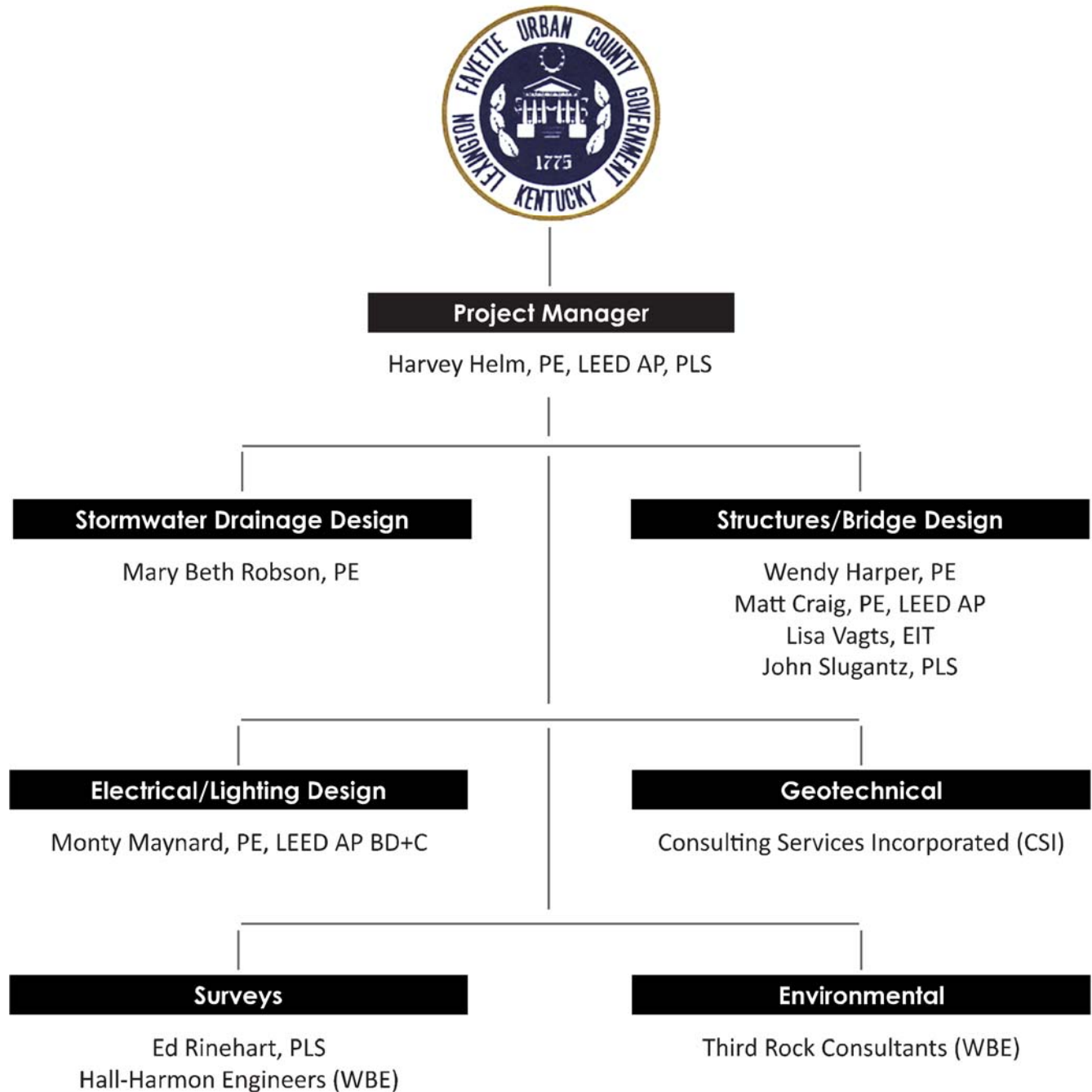
**Third Rock Consultants, LLC**, is a certified woman-owned business enterprise (WBE) with offices in Lexington and Louisville, Kentucky; and Nashville and Knoxville, Tennessee. Established in 2000, Third Rock is recognized as a leading environmental firm in the region, achieving this distinction through a combination of superior technical skills and commitment to meeting our clients' needs. Third Rock's services have long included environmental engineering design, biological and ecological analyses, environmental permitting and mitigation, and NEPA documentation, but we are proud to announce that we now offer construction management and landscape architecture services as well.

**Consulting Services Incorporated**, a designated Small Business by the SBA, is locally owned and headquartered in Lexington with 42 employees. The firm's staff of professionals have over 300 years of combined experience in the geotechnical, construction and materials engineering, testing and IBC special inspection fields. CSI provides the following geotechnical and engineering services: geotechnical exploration/soils reports; site assessments for permitting/civil design; pavement studies and design; site specific seismic studies for International Building Code (IBC); geophysical studies; and soil and rock drilling/sampling. CSI's in-house materials laboratory is AASHTO (AMRL/AAP R-18), US Army Corp of Engineers and Kentucky Transportation Cabinet certified to provide testing for concrete, soils, aggregates, masonry, asphalt and steel.

## Project Team

For this contract, we have carefully selected a number of GRW staff members based on their related experience and expertise in the various services required. An organizational chart illustrating GRW team members, as well as DBE subconsultants, is provided below. Key project team member resumes, including office locations, are also included in this section.

Key project team member resumes are also included in this section. Employee office locations are noted on the resumes. We understand that your selection criteria involves the evaluation of team members' relevant work within the last five years; therefore, the year of project completion is listed at the end of each project example provided on GRW's resumes.



# Harvey Helm, PE, LEED AP, PLS

## GRW Project Manager



**Office Location:** Lexington

**Years of Experience/Years with GRW:** 40/40

### Education

B.S., Civil Engineering, 1977, University of Kentucky

### Registration

Professional Engineer: KY, KS, TN, IN, OH, MS, GA, NC, MI, AL, AR, WV

LEED Accredited Professional, Building Design + Construction

Professional Land Surveyor: KY

Certified Professional in Erosion and Sediment Control

### Qualifications and Similar Project Experience

With four decades of experience in the design and construction management of transportation projects, Mr. Helm has accomplished several projects for the Kentucky Department of Transportation and the Lexington-Fayette Urban County Government. A few of these projects include:

**Lexington Liberty/Todds Road (KY 1927) Section 2, Lexington, KY** - Sr. Project Engineer. Final design services for the widening to three lanes of a 1.6-mile section 2 of KY 1927 Liberty/Todds Road in Fayette County from I-75 to Andover Forest Drive. Closely coordinated with the LFUCG Division of Engineering and the Kentucky Department of Highways, the project reduces congestion and improves safety and includes a typical three-lane urban roadway section with bicycle lanes, sidewalks and handicap ramps; center two-way left turn lane and additional travel lanes and right turn lanes; curb and gutters, and roadway drainage primarily via storm sewers. Included field data collection and survey work. (2015)

**Versailles Crossfield Drive Extension, Versailles, KY** - Principal. Corridor planning and design for an approximately 0.5-mile connector road between Lexington Street and US 60 Bypass in Versailles to relieve nearby congestion and create opportunities for infill development. Documents included typical sections and details, right-of-way plans and acquisition, plans and profiles, hydraulics, cross sections, cost estimates, surveying, specifications and bidding documents. (2012)

**Lexington Polo Club Boulevard Connection, Lexington, KY** - Principal. Survey and final design services for connection of two pieces of Polo Club Boulevard in Fayette County from Deer Haven Lane to Todds Road. Project, including new 200-long, double 8' x 4' box culvert, curb/gutter and landscaping enhancements, curb/gutter and landscaping enhancements, will complete critical section of boulevard roadway system as envisioned in Lexington-Fayette Urban County Planning Commission Expansion Area Master Plan. (2014)

**Murray-Calloway County Middle School Safe Routes to School Sidewalks, Murray, KY** - QA/QC. Planning, design and construction administration services for sidewalk construction as part of Safe Routes to School program. Included approximately 7,000 LF of 5-foot wide sidewalk along with numerous crosswalks, drainage improvements and all required permitting. (2010)

**Hodgenville Downtown Revitalization, Hodgenville, KY** - Project Manager. Fast-track design and construction administration services for pedestrian-friendly traffic roundabout (encompassing the city's Abraham Lincoln monument) and renovation of historic town square near Abraham Lincoln's birthplace, in preparation for the Lincoln Bicentennial Celebration. Included signage, parking, brick paver fields, lighting, underground utilities installation (water, sanitary and storm sewer, and electric) and surface drainage. Provided improved traffic flow, increased pedestrian safety, and increased visibility and accessibility for local businesses. (2007)

# Wendy Harper, PE

## GRW Structural Engineer



**Office Location:** Lexington

**Years of Experience/Years with GRW:** 13/<1

### Education

M.S., Civil Engineering, 2003, University of Kentucky

B.S., Civil Engineering, 2000, West Virginia Institute of Technology

### Registration

Professional Engineer: KY, OH, WV

### Professional Affiliations and Training

Steel Bridge Design Using AASHTO LRFD Bridge Design Specifications

Load and Resistance Factor Design (LRFD) Bridge Design Training, presented by WVDOT and ACEC

Practical Highway Hydrology, presented by the National Highway Institute

Load and Resistance Factor Design (LRFD) Training Courses sponsored by ODOT

NCEES Certified Model Law Engineer

### Qualifications and Similar Project Experience

Ms. Harper has more than a decade of experience with the design and plan production of welded steel plate girders, prestressed I-beams, concrete abutments, and piers founded on piles and drilled shafts. She has experience with Leap Software, including Conspan, RC Pier and Geomath, for standard and non-standard design, and is also proficient with the following design software: L-Pile, MDX, PCA Column, GT Strudl, BARS and MathCAD. A few of her projects include:

**Lexington Liberty/Todds Road (KY 1927) Section 2, Lexington, KY** - Structural Engineer. Final design services for the widening to three lanes of a 1.6-mile section 2 of KY 1927 Liberty/Todds Road in Fayette County from I-75 to Andover Forest Drive. Project includes replacement of existing two-lane bridge over I-75 with a five-lane PCI-beam bridge. (2015)

**Midtown Tunnel Project, Norfolk and Portsmouth, VA** - Assisted with design and plan production for I-264 Ramp Bridge over Frederick Boulevard. Included design of full-height abutments on prestressed concrete piles, utilizing EPS backfill to reduce pile loads. (2013)

**I-395 High Occupancy Vehicle Ramp, Alexandria VA** - Design Engineer responsible for checking existing substructure units of Seminary Road Bridge. Assisted with preliminary design for 7-span, I-395 Ramp Bridge and a pedestrian bridge. (2013)

**US 231 over I-65, Warren County KY** - Project Engineer responsible for design and plan production for single point urban interchange (SPUI) structure. The 225 foot wide skewed structure is a two-span prestressed I-beam bridge founded on piles. (2011)

**I-75 Downtown Dayton Sub-Corridor, Dayton, OH** - Project Engineer responsible for development of Bridge Type Study and Stage 1 submittals for 930-foot-long South River Bridge carrying Interstate 75 traffic over the Great Miami River. (2010)

**North-South Corridor Project/Milwaukee, WI** - Project Engineer responsible for design and plan production for four bridge portions of project. 27<sup>th</sup> Street northbound and southbound over I-94 is a four-span prestressed concrete I-beam bridge supported on stub abutments and concrete piers supported on drilled shafts. The Airport Spur over I-94 is a two-span prestressed concrete bridge supported on full height abutments and piers supported by driven piles. (2009)



# Matthew Craig, PE, SE, LEED AP

## GRW Structural Engineer



**Office Location:** Lexington

**Years of Experience/Years with GRW:** 24/6

### Education

B.S., Mechanical Engineering, 1990, The Ohio State University

M.S., Engineering (Focus on Structural), 1994, Purdue University

### Registration

Professional Engineer: AL, FL, GA, IN, KY, LA, MD, MI, MN, MO, MS, NC, OH, PA, SC, TN, TX, VA, WI

Licensed Structural Engineer: IL

LEED Accredited Professional

### Professional Affiliations and Training

Structural Engineers Association of Kentucky (SEAK), Past President

### Qualifications and Similar Project Experience

With more than 24 years of experience, Mr. Craig's technical experience includes structural steel, foundation design, reinforced concrete, and code compliance. His relevant experience includes:

**Yazoo City U.S. Penitentiary and Satellite Camp Bridge, Yazoo City, MS** - Structural Engineer. Design of 40-foot long, 28-foot wide modular precast vehicle bridge in accordance with latest AASHTO bridge specification including the newer HL-93 LRFD loading. Foundations were 16-inch square precast concrete piles driven to about 55-foot embedment in alluvial clay in former flood plain. Pile specification included analyzing a number of test piles using Pile Driving Analyzer (PDA) equipment and software to determine proper embedment depth for all piles; pile design was coordinated with dimensions. Bridge superstructure was all modular precast concrete members including pile caps and wing walls. (2012)

**Nicholasville Signalization Replacement Project, Nicholasville, KY** - Structural Engineer. (2013)

**Lexington Liberty/Todds Road (KY 1927) Section 2, Lexington, KY** - Structural Engineer. Final design services for the widening to three lanes of a 1.6-mile section 2 of KY 1927 Liberty/Todds Road in Fayette County from I-75 to Andover Forest Drive. Project includes replacement of existing two-lane bridge over I-75 with a five-lane PCI-beam bridge. (2015)

**Lexington Wastewater Wet Weather Storage Tanks, Lexington, KY** - Structural Engineer. Design and construction phase services for Phase 1 of multi-phase wet weather storage facility adjacent to LFUCG Town Branch WWTP. Phase 1 involves 22 MG wet weather storage tank. (2016)

**Lexington Expansion Area 2A Watershed Pumping Station and Force Mains, Lexington, KY** - Structural Engineer. Design for a new 10 MGD pumping station with maximum pumping capacity of 7,400 gpm, screening room, controls room, odor control room, bathroom and mechanical room, with 4,800 LF of 24" force main and 3,600 LF of 48" to 15" gravity sewers, to serve new development in the area. (2014)

**St. Vincent's Hospital Cancer Clinic and Parking Deck, Jacksonville, FL** - Structural Engineer and detailing coordinator for design of all precast components of a 7-story parking garage and cancer clinic. Produced structural design and supervised and checked detailing and shop drawing production of over 500 precast components working for the precast manufacturer.

**Medical University of South Carolina, Charleston, SC** - Performed seismic analysis and designed precast components for 9-deck parking garage.

# Lisa Vagts, EIT

## GRW Structural Engineer



**Office Location:** Lexington

**Years of Experience/Years with GRW:** 5/5

### Education

A.A.S., Architectural Technology Major, 2008, Bluegrass Community and Technical College

B.S., Civil Engineering, 2012, University of Kentucky

### Registration

Engineer-in-Training: KY

### Qualifications and Similar Project Experience

**Yazoo City U.S. Penitentiary and Satellite Camp Bridge, Yazoo City, MS** - Structural Designer. Design of 40-foot long, 28-foot wide modular precast vehicle bridge in accordance with latest AASHTO bridge specification including the newer HL-93 LRFD loading. Foundations were 16-inch square precast concrete piles driven to about 55-foot embedment in alluvial clay in former flood plain. Pile specification included analyzing a number of test piles using Pile Driving Analyzer (PDA) equipment and software to determine proper embedment depth for all piles; pile design was coordinated with dimensions. Bridge superstructure was all modular precast concrete members including pile caps and wing walls. (2012)

**LFUCG Idle Hour North Stormwater Improvements, Lexington, KY** - Structural Engineer. Design and construction assistance services for approximately 2,000 LF of storm sewer pipe, ranging in size from 15 to 42 inches in diameter; 9 new manholes; 13 new curb inlets; and a cast-in place headwall. (2014)

**Lexington Liberty/Todds Road ( KY 1927) Section 2, Lexington, KY** - Structural Designer. Final design services for the widening to three lanes of a 1.6-mile section 2 of KY 1927 Liberty/Todds Road in Fayette County from I-75 to Andover Forest Drive. Project includes replacement of existing two-lane bridge over I-75 with a five-lane PCI-beam bridge. (2015)

**Lexington Expansion Area 2A Watershed Pumping Station and Force Mains, Lexington, KY** - Structural Designer. Design for a new 10 MGD pumping station with maximum pumping capacity of 7,400 gpm, screening room, controls room, odor control room, bathroom and mechanical room, with 4,800 LF of 24" force main and 3,600 LF of 48" to 15" gravity sewers, to serve new development in the area. (2014)

**Lexington Wastewater Wet Weather Storage Tanks, Lexington, KY** - Structural Engineer. Design and construction phase services for Phase 1 of multi-phase wet weather storage facility adjacent to LFUCG Town Branch WWTP. Phase 1 involves 22 MG wet weather storage tank. (2016)

**Ft. Knox Warriors in Transition Headquarters Building, Fort Knox, KY** - Structural Engineer. Design services (including BIM model) for design-build of new 7,000 SF Warriors in Transition Headquarters Building to meet LEED Silver design criteria. Construction is single-story load bearing masonry with truss roof framing and shingle roofing. (2014)

**Pee Dee Electric Cooperative Warehouse, Marion, SC** - Structural Designer. Structural engineering services for design/build of new 50,000 SF warehouse. (2013)

# Mary Beth Robson, PE

## GRW Stormwater Engineer



**Office Location:** Lexington

**Years of Experience/Years with GRW:** 26/9

### Education

B.S., Chemical Engineering, 1988, University of Cincinnati

M.S., Environmental Engineering, 1990, University of Notre Dame

### Registration

Professional Engineer: KY

### Professional Affiliations and Training

Karst Stormwater Management, March 2010

Green Stormwater Management, May 2009

Water Surface Profile Computations using HEC-RAS, 2006

### Qualifications and Similar Project Experience

Ms. Robson possesses a thorough knowledge of hydrology and hydraulics which is critical in predicting flooding as well as pollutant discharges. Ms. Robson's related projects include stormwater master plans, stormwater and flood modeling, detention basin analysis, and hydrology studies for water supply and pollutant discharge predictions. She uses HEC-HMS, HEC-RAS, PondPack, StormCad, XpSWMM, TR55 and other hydrology and hydraulic modeling programs.

**LFUCG Idle Hour North Stormwater Improvements, Lexington, KY** - Project Manager. Design and construction assistance services for approximately 2,000 LF of storm sewer pipe, ranging in size from 15 to 42 inches in diameter; 9 new manholes; 13 new curb inlets; and a cast-in place headwall. (2014)

**Lexington Liberty/Todds Road (KY 1927) Section 2, Lexington, KY** - Environmental Engineer. Final design services for the widening to three lanes of a 1.6-mile section 2 of KY 1927 Liberty/Todds Road in Fayette County from I-75 to Andover Forest Drive. (2014)

**Lexington Polo Club Boulevard Connection, Lexington, KY** - Project Engineer. Survey and final design services for connection of two pieces of Polo Club Boulevard in Fayette County from Deer Haven Lane to Todds Road. Project, including new 200-long, double 8' x 4' box culvert, curb/gutter and landscaping enhancements, new curb/gutter and landscaping enhancements, will complete critical section of boulevard roadway system. (2014)

**Lexington Rogers Road Area Flood Mitigation, Lexington, KY** - Environmental Engineer. Preparation of an engineering study to examine reoccurring flooding problems (primarily due to the existing storm sewer system having inadequate capacity), evaluate potential solutions and make recommendations. (2013)

**Kentucky Transportation Cabinet KY 146 Henry County Phase 1 Reconstruction Floodplain Analysis, Louisville, KY** - Environmental Engineer. Floodplain analysis to establish existing floodplain extents for the proposed project. GRW also will conduct a floodplain analysis to determine the effects of the proposed project once the preferred alternate route is selected. HEC RAS software and KYTC Drainage Manual hydrology and hydraulic methods were used. (2013)

**Versailles Crossfield Drive Extension, Versailles, KY** - Environmental Engineer. Corridor planning and design for an approximately 0.5-mile connector road between Lexington Street and US 60 Bypass in Versailles to relieve nearby congestion. Project affects major intersections of the two main arterials and includes a stream crossing and associated environmental permitting. (2012)

## List of Clients

These references may be contacted to verify the quality of our work and their satisfaction with our performance. GRW believes performance is best measured from the client's perspective. With repeat clients, such as the Lexington-Fayette Urban County Government, the Kentucky Transportation Cabinet and others, providing more than 90 percent of GRW's current workload, we believe this is a testament to our business philosophy of providing high-quality, close, personal service.

### **Lexington-Fayette Urban County Government**

- Liberty/Todds Road ( KY 1927) Section 2
- Polo Club Boulevard Connection

Keith Lovan, Municipal Engineer Senior  
(859) 258-3478 | klovan@lexingtonky.gov

### **Boone County Public Works**

- Cayton Road Extension

Gregory Sketch, Director of Public Works  
(859) 334-3600 | GSketch@boonecountyky.org

### **City of Hodgenville, KY**

- Downtown Revitalization/Roundabout (ACEC Engineering Excellence Honor Award)
- College Street Drainage Basin Stormwater Improvements

Terry Cruse, Mayor  
(270) 358-3832 | hville@windstream.net

### **City of Jeffersontown, KY**

- Bluegrass Parkway Bicycle and Pedestrian Trail Phases I & II
- Bluegrass Commerce Park Infrastructure Improvements

Matt Meunier, Assistant to the Mayor  
(502) 267-8333 | mmeunier@jeffersontownky.com

### **Kentucky Transportation Cabinet, District 5**

- Hurstbourne Parkway, Bardstown to Fern Valley Roads (Project of the Year Award, Transportation Category, American Public Works, Kentucky Chapter)
- Hurstbourne Parkway, Linn Station Road to Timberwood Circle
- Hurstbourne Parkway at Shelbyville Road Improvements

Matt Bullock, Chief District Engineer  
(502) 210-5400 | matt.bullock.ky.gov

### **City of Versailles, KY**

- Crossfield Drive Extension

Bart Miller, Public Works Director  
(859) 873-2245 | bmiller@cityhall.versaillesky.com

### **City of Murray, KY**

- Murray-Calloway County Middle School Safe Routes to School Sidewalks

Peyton Mastera, Project Administrator  
(270) 762-0350 | Peyton.Mastera@murrayky.gov

### **Federal Bureau of Prisons**

- Yazoo City U.S. Penitentiary and Satellite Camp Roadways and Bridge

Jody Smith, Project Manager  
(202) 514-6456 | jlsmith@bop.gov

### **City of St. Albans, WV\***

- St. Albans Streetscape Phases I-IV

Dick Callaway, Mayor  
(304) 727-2971 | samayor@suddenlinkmail.com

### **West Virginia Division of Highways\***

- Meadow River Trail
- Shepherdstown Pedestrian Bicycle Trail
- L&R Trail Phase II
- Chesapeake Sidewalk Project Phase II

Ryan C. Burns, Program Manager  
(304) 558-9297 | Ryan.c.burns@wv.gov

### **City of Lewisburg, WV\***

- L&R Trail Phase I
- Lewisburg Sidewalk Phase II

John Manchester, Mayor  
(304) 645-2080 | jmanchester@lewisburg-wv.com

*\*Reference for Chapman Technical Group, a wholly-owned subsidiary of GRW*

## Similar Projects

This section highlights a few recent examples of GRW's accomplishments with projects similar to yours.

### Lexington Liberty/Todds Road ( KY 1927) Section 2

GRW provided design services for the widening of Section 2 of KY 1927 Liberty/Todds Road in Fayette County from I-75 to Andover Forest Drive. The 1.6-mile section is being widened to three lanes, including bicycle lanes, sidewalks and handicap ramps, to reduce congestion and improve safety. The center two-way left turn lane will provide storage for left turn movements throughout the corridor and additional travel lanes and right turn lanes will also be provided where possible at congested areas and major intersections. **The existing two-lane bridge over I-75 will be replaced with a five-lane PCI-beam bridge.** Curb and gutters will be utilized and roadway drainage will primarily be accommodated in storm sewers. This approach allows the majority of the proposed work to be conducted within the existing right of way. Approximately 77 properties exist along the project corridor, and almost all required right-of-way acquisition and/or temporary easements.

This project also includes a large stream crossing that discharges across the Andover Country Club golf course. Coordination with LFUCG and the KYTC Drainage Division revealed the existing structure and the preliminary design structure were severely undersized. Careful consideration of floodplain issues as well as and construction impacts and aesthetics resulted in selection of a precast concrete arch structure that blends well with its suburban surroundings.

**Project Cost:** \$9,500,000      **Completion Date:** 2015

**Key Team Members:** Harvey Helm, Greg Gabbard, Eric Fister, Alison Chadwell, John Slugantz, Matt Craig, Lisa Vagts, Wendy Harper, Mary Beth Robson

### Yazoo City U.S. Penitentiary and Satellite Camp Bridge

GRW led the design team, in conjunction with Yates/Caddell JV, for the design/build of a men's high-security United States Penitentiary (USP) and minimum-security Federal Prison Camp (FPC) located in Yazoo City, Mississippi. Site work involved earthwork, vehicle bridge, roadways, parking, building pads, and utilities for the 76-acre complex. The project necessitated an early site work package in order to keep the project on schedule.

For the FPC, **GRW designed a 40-foot long, 28-foot wide modular precast vehicle bridge.** The bridge was designed for vehicular traffic in accordance with the latest AASHTO bridge specification including the newer HL-93 LRFD loading. The foundations were 16-inch square precast concrete piles driven to about 55-foot embedment in alluvial clay in a former flood plain. The pile specification included analyzing a number of test piles using Pile Driving Analyzer (PDA) equipment and software to determine the proper embedment depth for all the piles. The pile design was coordinated with the dimensions The superstructure of the bridge was all modular precast concrete members, including the pile caps and wing walls.

**Project Cost:** Part of \$182,053,325 project      **Completion Date:** 2012

**Key Team Members:** Harvey Helm, Matt Craig, Lisa Vagts

## Lexington Polo Club Boulevard Connection

GRW is providing survey and final design services for the connection of two pieces of Polo Club Boulevard in Fayette County from Deer Haven Lane to Todds Road. The work is being done in close coordination with the LFUCG Division of Engineering and the Kentucky Department of Highways.

This project, including a **new 200-long, double 8' x 4' box culvert**, curb/gutter and landscaping enhancements, will complete a critical section of a boulevard roadway system as envisioned in the Lexington-Fayette Urban County Planning Commission Expansion Area Master Plan. The first segment involves the intersection with Deer Haven Lane, while the second segment entails the extension of Polo Club to Todds Road along with a suitable connection. The recent announcement by Fayette County Public Schools to open an elementary school in this neighborhood in August 2015 offers considerable incentive to complete these two missing segments of Polo Club Boulevard as soon as possible.

GRW provided conventional field work alongside state-of-the-art LiDAR survey techniques to expedite the mapping delivery. The final engineering design for the two remaining sections of Polo Club Boulevard includes careful establishment of appropriate geometry to tie into the existing roadway and make the most of what has already been built. Spotty existing sidewalk construction will be connected throughout with the application of current ADA standards. Existing utilities have been investigated and mapped to minimize impacts.

This project also includes a large stream crossing at Deer Haven that is surrounded by an area of potential wetland. It is anticipated that a precast structure can be used to minimize impacts to the environment and blend with the local surroundings.

**Project Cost:** \$1,800,000

**Completion Date:** 2014

**Key Team Members:** Greg Gabbard, Alison Chadwell, Mary Beth Robson, John Slugantz

## Local Office

As shown in Attachment 1, GRW and all of our proposed subconsultants have headquarters in Lexington, KY, and 100 percent of the work will be performed by staff in Lexington.

Attachment 1

### Project Team Location(s)

Prime Consultant	Location (City, State)	Date Office Established	Total Number of Employees	No. of Employees expected to work on DOE projects
Headquarters	Lexington, KY	6/22/1964	143	12
Local Office	Lexington, KY	6/22/2964	143	12
PM Location	Lexington, KY			
<b>SubConsultants</b>				
Name:	Hall-Harmon Engineers	Aug. 1994	7	7, if needed
Service Provided	Civil Eng. & Surveying			
Headquarters	Lexington, KY	Aug. 1994	7	7, if needed
Local Office	Lexington, KY	Aug. 1994	7	7, if needed
Name:	Third Rock Consultants	1/1/2001	26	5
Service Provided	Environmental			
Headquarters	Lexington, KY	1/1/2001	24	5
Local Office	Lexington, KY	1/1/2001	24	5
Name:	Consulting Services, Inc.	2009	43	9
Service Provided	Geotechnical			
Headquarters	Lexington, KY	2009	31	9
Local Office	Lexington, KY	2009	31	9

**Notes:**

1. "Headquarters" refers to the corporate office that provides project support to the local office, if applicable. If support comes from multiple locations, use the blank spaces in the form to provide relevant information.
2. Listing of sub-consultants is optional and should only be provided if the prime consultant considers the sub-consultant(s) services to be essential to meeting the required qualifications. In this event, documentation from the subconsultant(s) shall be submitted in the SOQ that provides a commitment to be a part of the prime consultant's team in providing the stated services. In such cases, for the purpose of evaluating the proposals, committed sub-consultants will be considered to be part of the prime consultant's workforce. Prime consultants face potential disqualification from future work if DOE finds that the identified sub-consultants are not being utilized to deliver assigned work products.

## Disadvantaged Business Enterprise (DBE) Involvement

GRW understands and agrees with LFUCG's 10% MWDBE goal. For this contract, we propose to use the certified WBE subconsultants Hall-Harmon Engineers and Third Rock Consultants to meet your goals.



### LFUCG MWDBE PARTICIPATION FORM Bid/RFP/Quote Reference # 13-2014

The MWDBE subcontractors listed have agreed to participate on this Bid/RFP/Quote. If any substitution is made or the total value of the work is changed prior to or after the job is in progress, it is understood that those substitutions must be submitted to Central Purchasing for approval immediately.

MWDBE Company, Name, Address, Phone, Email	Work to be Performed	Total Dollar Value of the Work	% Value of Total Contract
1. Hall-Harmon Engineers 1081 Dove Run Rd, Ste 203 Lexington, KY 40502 (859) 269-3150 Kitty.Hall-Harmon@HHEnet.com	Surveying	TBD	5%
2. Third Rock Consultants, LLC 2526 Regency Rd, Ste 180 Lexington, KY 40503 859.977.2000 akerley@thirdrockconsultants.com	Environmental	TBD	5%
3.			
4.			

The undersigned company representative submits the above list of MWDBE firms to be used in accomplishing the work contained in this Bid/RFP/Quote. Any misrepresentation may result in the termination of the contract and/or be subject to applicable Federal and State laws concerning false statements and false claims.

GRW \_\_\_\_\_

**Company**

March 25, 2014 \_\_\_\_\_

**Date**

\_\_\_\_\_  
**Company Representative**

President \_\_\_\_\_

**Title**



## SECTION 4.0

### **Contract 5 – Pedestrian, Bike or Multimodal Tail Design/Planning**

## 4.0 Contract 5: Pedestrian, Bike or Multimodal Trail Design/Planning

### Firm Qualifications

GRW was founded in 1965 by Mr. G. Reynolds Watkins to provide professional design services to federal, state, municipal and private industry clients. Today GRW has grown to become a full-service engineering, architectural and geospatial services firm with a staff of more than 250 professionals and offices in Kentucky, Indiana, Ohio, Tennessee and West Virginia. Watkins' insistence on technical excellence and personal service lives on as the guiding principle at GRW. **This dedication to service has resulted in repeat clients providing 90 percent of GRW's current workload.**

GRW offers comprehensive technical expertise for all types of infrastructure from concept design through construction administration and inspection. **Our wide range of professional services includes:**

- Transportation Engineering
- Civil/Site Engineering
- Electrical Engineering
- Mechanical Engineering
- Structural Engineering
- Water, Wastewater and Stormwater System Engineering
- Architecture
- Landscape Architecture
- Master Planning
- Aerial Mapping and Surveying
- Geographic Information Services
- GPS and Conventional Surveying
- LiDAR (Aerial, Mobile, and Terrestrial)
- Construction Administration and Resident Project Representation (Inspection)
- Cost Estimating
- Sustainable Design

Experienced with a variety of transportation projects, GRW has completed large roadway and bridge construction projects and federal aid-funded Local Public Agency projects, such as multi-use trails and sidewalks. Our Kentucky Transportation Cabinet experience includes the design of hundreds of miles of streets, roads, and highways, as well as associated sidewalks, bike lanes, and over the past dozen years, GRW has completed more than \$300,000,000 in transportation projects.

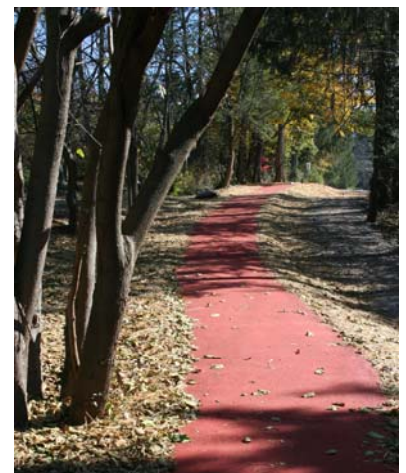
### Partial Experience Summary for Pedestrian, Bike or Multimodal Trail Design/Planning

- Bluegrass Parkway Bicycle and Pedestrian Trail Phases I & II, Jeffersontown, KY
- L&R Trail, Phase I & II, Lewisburg, WV
- Metro Louisville Urban Bicycle Network, Louisville, KY



GRW is KYTC-prequalified in 17 categories including:

- Pedestrian and Bicycle Facility Planning & Design
- Urban Roadway Design
- Rural Roadway Design
- Traffic Engineering
- Road Centerline Data Collection
- Highway Planning
- Structural Design (Spans under 500')
- Electrical Engineering Roadway Lighting
- Highway Noise
- EIS Writing & Coordination
- Construction Project Supervision
- Surveying



- Pedestrian and Bicycle Trail, Shepherdstown, WV
- Rising Sun Community Park with Multi-use Walking Trail, Rising Sun, IN
- 6th Street and Scott Boulevard Streetscape, Covington, KY
- Veteran's Park with Multi-use Walking Trail, Edmonton, KY
- Virginia Avenue Bike Lane Addition, Lexington, KY
- KY 18-Burlington Elementary Safe Routes to School Sidewalks, Burlington, KY
- Safe Routes To School Sidewalk Renovations, Carlisle, KY
- Safe Routes to School Sidewalks, Murray, KY
- Main Street Sidewalk Improvements, Tompkinsville, KY



## Subconsultants

**Hall-Harmon Engineers, Inc. (HHE)** is a Lexington, Kentucky firm specializing in civil engineering and land surveying with major emphasis in transportation facilities, site development, site utilities and land surveying. HHE has extensive experience with providing engineering design and surveying services on various types of projects for the Lexington-Fayette Urban County Government (LFUCG) as both prime consultant and as a subconsultant which include surveying, roadway design, bike lane/trail design, storm water and sanitary sewer design in addition to being very familiar with LFUCG Practices and Policies, Standard Drawings and Infrastructure Manuals. HHE – a **certified DBE/WBE** with Kentucky Transportation Cabinet (KYTC) for the past fifteen years – is prequalified with KYTC to perform the following services: Rural Roadway Design, Urban Roadway Design, Surveying, Pedestrian and Bicycle Facility Planning & Design, Airport Design, Airport Master Planning, and UST & HAZMAT Site Analysis / Preliminary Site Assessment.

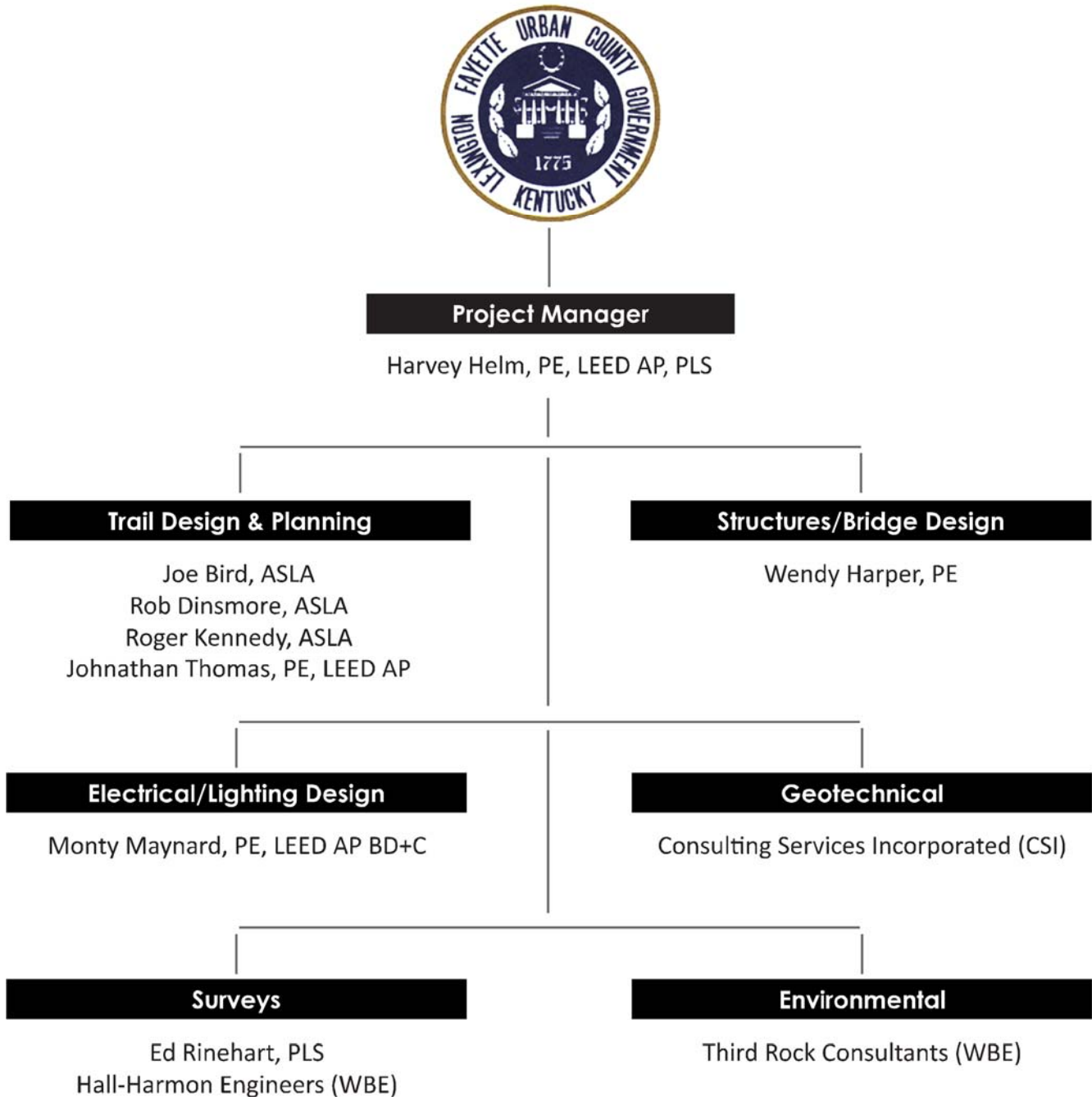
**Third Rock Consultants, LLC**, is a certified woman-owned business enterprise (WBE) with offices in Lexington and Louisville, Kentucky; and Nashville and Knoxville, Tennessee. Established in 2000, Third Rock is recognized as a leading environmental firm in the region, achieving this distinction through a combination of superior technical skills and commitment to meeting our clients' needs. Third Rock's services have long included environmental engineering design, biological and ecological analyses, environmental permitting and mitigation, and NEPA documentation, but we are proud to announce that we now offer construction management and landscape architecture services as well.

**Consulting Services Incorporated**, a designated Small Business by the SBA, is locally owned and headquartered in Lexington with 42 employees. The firm's staff of professionals have over 300 years of combined experience in the geotechnical, construction and materials engineering, testing and IBC special inspection fields. CSI provides the following geotechnical and engineering services: geotechnical exploration/soils reports; site assessments for permitting/civil design; pavement studies and design; site specific seismic studies for International Building Code (IBC); geophysical studies; and soil and rock drilling/sampling. CSI's in-house materials laboratory is AASHTO (AMRL/AAP R-18), US Army Corp of Engineers and Kentucky Transportation Cabinet certified to provide testing for concrete, soils, aggregates, masonry, asphalt and steel.

## Project Team

For this contract, we have carefully selected a number of GRW staff members based on their related experience and expertise in the various services required. An organizational chart illustrating GRW team members, as well as DBE subconsultants, is provided below. Key project team member resumes, including office locations, are also included in this section.

Key project team member resumes are also included in this section. Employee office locations are noted on the resumes. We understand that your selection criteria involves the evaluation of team members' relevant work within the last five years; therefore, the year of project completion is listed at the end of each project example provided on GRW's resumes.



# Harvey Helm, PE, LEED AP, PLS

## GRW Project Manager



**Office Location:** Lexington

**Years of Experience/Years with GRW:** 40/40

### Education

B.S., Civil Engineering, 1977, University of Kentucky

### Registration

Professional Engineer: KY, KS, TN, IN, OH, MS, GA, NC, MI, AL, AR, WV

LEED Accredited Professional, Building Design + Construction

Professional Land Surveyor: KY

Certified Professional in Erosion and Sediment Control

### Qualifications and Similar Project Experience

Mr. Helm has four decades of experience with land surveying, trails, sidewalks, drainage facilities, streets and roads, site development and site utilities. He has been Project Manager of major site development and highway projects which gives Mr. Helm a broad base of experience. A few of his projects include:

**Metro Louisville Urban Bicycle Network, Louisville, KY** - Project Manager. Marking for network of bike paths to provide connectivity through various downtown areas. Included approximately 18 miles of bike lanes in various downtown neighborhoods as Phase I of the CMAQ funded project. (2014)

**Jeffersontown Bluegrass Parkway Bicycle and Pedestrian Trail Phases I & II, Jeffersontown, KY** – Principal and Technical Advisor. Eight- to 10-foot-wide, 3.5-mile-long paved (both asphalt and PCC concrete) bicycle and pedestrian path split into two phases for construction. Project was funded through Congestion Mitigation and Air Quality Improvement (CMAQ) Program, which required coordination and approval of Kentucky Transportation Cabinet’s District 5 (KYTC D5) and Office of Local Programs. (2014)

**Lexington Liberty/Todds Road (KY 1927) Section 2, Lexington, KY** - Sr. Project Engineer. Final design services for the widening to three lanes of a 1.6-mile section 2 of KY 1927 Liberty/Todds Road in Fayette County from I-75 to Andover Forest Drive. Includes bicycle lanes and sidewalks. (2015)

**Murray-Calloway County Middle School Safe Routes to School Sidewalks, Murray, KY** - QA/QC. Planning, design and construction administration services for sidewalk construction as part of Safe Routes to School program. Included approximately 7,000 LF of 5-foot wide sidewalk along with numerous crosswalks, drainage improvements and all required permitting. (2010)

**Carlisle Safe Routes To School Sidewalk Renovations, Carlisle, KY** - Principal. Grant assistance, preliminary drawings, initial cost estimate, as well as construction plans for approximately 5,000 LF of sidewalk, addressing handicap ramps and ADA issues. Subject to the Project Development Guide for Local Public Agencies, as well as historical and environmental requirements. (2010)

**Lexington Polo Club Boulevard Connection, Lexington, KY** - Principal. Survey and final design services for connection of two pieces of Polo Club Boulevard in Fayette County from Deer Haven Lane to Todds Road. Project, including new 200-long, double 8' x 4' box culvert, curb/gutter and landscaping enhancements, curb/gutter and landscaping enhancements, will complete critical section of boulevard roadway system as envisioned in Lexington-Fayette Urban County Planning Commission Expansion Area Master Plan. (2014)

**LFUCG Idle Hour North Stormwater Improvements, Lexington, KY** - Principal. Design and construction assistance services for approximately 2,000 LF of storm sewer pipe, ranging in size from 15 to 42 inches in diameter; 9 new manholes; 13 new curb inlets; and a cast-in place headwall. (2014)

# Johnathan Thomas, PE, LEED AP

## GRW Civil Engineer



**Office Location:** Louisville

**Years of Experience/Years with GRW:** 10/4

### Education

B.S., Civil Engineering, 2004, University of Kentucky

B.S., Engineering Arts, 2004, Georgetown College

### Registration

Professional Engineer: SC, KY, IN

LEED Accredited Professional

### Qualifications and Similar Project Experience

Mr. Thomas is an experienced civil engineer who has prepared cost estimates, construction documents, and permits for a variety of government, institutional and commercial projects. He is experienced with the following software: Civil 3D, InRoads, StormCAD, SewerCAD, Pipe 2000, PondPack, ICPR, and XPSWMM.

Mr. Thomas provides construction administration services on many of his projects, and excels at maintaining positive working relationships with contractors. A few of his projects include:

**Jeffersontown Bluegrass Parkway Bicycle and Pedestrian Trail Phases I & II, Jeffersontown, KY** - Project Engineer. Design and construction administration services for eight- to 10-foot-wide, 3.5-mile-long paved (both asphalt and PCC concrete) bicycle and pedestrian path split into two phases for construction. Project was funded through Congestion Mitigation and Air Quality Improvement (CMAQ) Program, which required coordination and approval of Kentucky Transportation Cabinet's District 5 (KYTC D5) and Office of Local Programs. (2014)

**Jeffersontown Bluegrass Commerce Park Infrastructure Improvements, Jeffersontown, KY** - Project Engineer. Design, bidding, construction administration, and resident project representative services for a series of infrastructure improvements along Bluegrass Parkway near the Bluegrass Commerce Park. Among the series of design activities are a new entrance sign, curb and gutter design; lighting, fencing and landscaping enhancements; and pavement overlay/rehabilitation. (2014)

**Kentucky Transportation Cabinet The Ohio River Bridges Project Downtown Approach, Louisville, KY** - Project Engineer. Part of engineering team for design-build of new, cable stayed bridge spanning Ohio River to link Louisville, KY, and Jeffersonville, IN. Responsibilities encompass design of utility relocations for water and sewer, and some private communications on Kentucky side of project. (2016)

**Lexington Fort Sumter Area Flood Mitigation, Lexington, KY** - Project Engineer. Preparation of an engineering study to examine reoccurring flooding problems (primarily due to the overflow of a tributary of North Elkhorn Creek), evaluate potential solutions and make recommendations. (2013)

**Lexington Rogers Road Area Flood Mitigation, Lexington, KY** - Project Engineer. Preparation of an engineering study to examine reoccurring flooding problems (primarily due to the existing storm sewer system having inadequate capacity), evaluate potential solutions and make recommendations. Area includes sinkholes, open channels and a storm sewer system that discharges to a sinkhole area(2013)

**Lexington Tucson Drive Area Flood Mitigation, Lexington, KY** - Project Engineer. Engineering study to examine reoccurring flooding problems, evaluate potential solutions and make recommendations. Work included development of StormCAD model to simulate the flooding and test solutions, viable mitigation alternatives, construction constraints, and cost estimates. (2013)

# Joe Bird, PLA, ASLA

## GRW Landscape Architect



**Office Location:** St. Albans, WV

**Years of Experience/Years with Chapman Technical Group, a division of GRW:** 36/29

### Education

B.S., Landscape Architecture, 1978, West Virginia University

### Registration

Professional Landscape Architect: WV, KY

### Professional Affiliations and Training

West Virginia Chapter of the American Society of Landscape Architects

### Qualifications and Similar Project Experience

Mr. Bird is a project manager and registered landscape architect. His experience ranges from large site development projects to the management of multidiscipline and architectural projects. A few of his relevant projects include:

**Covington 6th Street and Scott Boulevard Improvements, Covington, KY** - Landscape Architect. Planning and design services for reconstruction of approximately 0.5 miles of city streets, encompassing primarily West Sixth Street and Scott Boulevard. LPA project includes placing electric and communications utilities underground, sidewalk replacement, and overall streetscape beautification including curb bump outs and rain gardens. (2015)

**Lewisburg L&R Trail, Phase I, Lewisburg, WV** - Project Manager. Phase I of multi-use trail at historic L&R Railroad no longer in service. First phase starts in downtown Lewisburg and winds through residential neighborhoods before ending at highway. Future phases will continue trail toward Ronceverte. (2010)

**Meadow River Rail Trail, WV** - Project Manager. Pedestrian/bicycle trail over 16.7 miles of rail bed, including construction of decks on four railroad trestles, and design of trailheads at strategic locations. (2014)

**Shepherdstown Pedestrian and Bicycle Trail, Shepherdstown, WV** - Project Manager. New, 4,000-foot pedestrian/bicycle trail parallel to WV 45. Required close coordination with local and state historic groups to maintain sensitive cultural heritage resources. (2014)

**St. Albans Streetscape Phase I and II Concept Development, St. Albans, WV**

**St. Albans Streetscape Phase III and IV, St. Albans, WV**

**Jane Lew Elementary Safe Routes to School, Lewis County, WV**

**Robert L. Bland Middle School Safe Routes to School, Lewis County, WV**

# Joe Dinsmore, PLA, ASLA

## GRW Landscape Architect



**Office Location:** St. Albans, WV

**Years of Experience/Years with Chapman Technical Group, a division of GRW:** 4/4

### Education

B.S., Landscape Architecture, 2010, West Virginia University

### Registration

Professional Landscape Architect: WV

### Professional Affiliations and Training

American Society of Landscape Architects WV Chapter (Chapter Director)

### Qualifications and Similar Project Experience

Mr. Dinsmore is responsible for the design and development of urban design projects, parks and recreation projects, and landscape design.

**Covington 6th Street and Scott Boulevard Improvements, Covington, KY** - Landscape Architect. Planning and design services for reconstruction of approximately 0.5 miles of city streets, encompassing primarily West Sixth Street and Scott Boulevard. LPA project includes placing electric and communications utilities underground, sidewalk replacement, and overall streetscape beautification including curb bump outs and rain gardens. (2015)

**St. Albans Streetscape Phase III and IV, St. Albans, WV**

**Jane Lew Elementary Safe Routes to School, Lewis County, WV**



# Roger Kennedy, PLA, ASLA

## GRW Landscape Architect



**Office Location:** St. Albans, WV

**Years of Experience/Years with Chapman Technical Group, a division of GRW:** 25/24

### Education

B.S., Landscape Architecture, 1990, West Virginia University

### Registration

Professional Landscape Architect: WV

### Qualifications and Similar Project Experience

**Lewisburg L&R Trail, Phase I, Lewisburg, WV** - Landscape Architect. Phase I of multi-use trail at historic L&R Railroad no longer in service. First phase starts in downtown Lewisburg and winds through residential neighborhoods before ending at highway. Future phases will continue trail toward Ronceverte. (2010)

**Shepherdstown Pedestrian and Bicycle Trail, Shepherdstown, WV** - Landscape Architect. New, 4,000-foot pedestrian/bicycle trail parallel to WV 45. Required close coordination with local and state historic groups to maintain sensitive cultural heritage resources. (2014)

**Shepherdstown Pedestrian/Bicycle Trail, Shepherdstown, WV**

**L&R Trail Phase II, Lewisburg, WV**

**Lewisburg Sidewalk Project Phase II, Lewisburg, WV**

**Chesapeake Sidewalk Project Phase I and II, Chesapeake, WV**

## List of Clients

These references may be contacted to verify the quality of our work and their satisfaction with our performance. GRW believes performance is best measured from the client's perspective. With repeat clients, such as the Lexington-Fayette Urban County Government, the Kentucky Transportation Cabinet and others, providing more than 90 percent of GRW's current workload, we believe this is a testament to our business philosophy of providing high-quality, close, personal service.

### **City of Jeffersontown, KY**

- Bluegrass Parkway Bicycle and Pedestrian Trail Phases I & II
- Bluegrass Commerce Park Infrastructure Improvements

Matt Meunier, Assistant to the Mayor  
(502) 267-8333 | mmeunier@jeffersontownky.com

### **City of Murray, KY**

- Murray-Calloway County Middle School Safe Routes to School Sidewalks

Peyton Mastera, Project Administrator  
(270) 762-0350 | Peyton.Mastera@murrayky.gov

### **West Virginia Division of Highways\***

- Meadow River Trail
- Shepherdstown Pedestrian Bicycle Trail
- L&R Trail Phase II
- Chesapeake Sidewalk Project Phase II

Ryan C. Burns, Program Manager  
(304) 558-9297 | Ryan.c.burns@wv.gov

### **City of Lewisburg, WV\***

- L&R Trail Phase I
- Lewisburg Sidewalk Phase II

John Manchester, Mayor  
(304) 645-2080 | jmanchester@lewisburg-wv.com

### **City of St. Albans, WV\***

- St. Albans Streetscape Phases I-IV

Dick Callaway, Mayor  
(304) 727-2971 | samayor@suddenlinkmail.com

*\*Reference for Chapman Technical Group, a wholly-owned subsidiary of GRW*

### **Lexington-Fayette Urban County Government**

- Liberty/Todds Road ( KY 1927) Section 2
- Polo Club Boulevard Connection

Keith Lovan, Municipal Engineer Senior  
(859) 258-3478 | klovan@lexingtonky.gov

### **Boone County Public Works**

- Cayton Road Extension

Gregory Sketch, Director of Public Works  
(859) 334-3600 | GSketch@boonecountyky.org

### **Federal Bureau of Prisons**

- Yazoo City U.S. Penitentiary and Satellite Camp Roadways and Bridge

Jody Smith, Project Manager  
(202) 514-6456 | jsmith@bop.gov

### **City of Hodgenville, KY**

- Downtown Revitalization/Roundabout (ACEC Engineering Excellence Honor Award)

Terry Cruse, Mayor  
(270) 358-3832 | hville@windstream.net

### **Kentucky Transportation Cabinet, District 5**

- Hurstbourne Parkway, Bardstown to Fern Valley Roads (Project of the Year Award, Transportation Category, American Public Works, Kentucky Chapter)
- Hurstbourne Parkway, Linn Station Road to Timberwood Circle
- Hurstbourne Parkway at Shelbyville Road Improvements

Matt Bullock, Chief District Engineer  
(502) 210-5400 | matt.bullock.ky.gov

### **City of Versailles, KY**

- Crossfield Drive Extension

Bart Miller, Public Works Director  
(859) 873-2245 | bmiller@cityhall.versaillesky.com

## Similar Projects

This section highlights a few recent examples of GRW's accomplishments with projects similar to yours.

### Jeffersontown Bluegrass Parkway Bicycle and Pedestrian Trail Phases I & II

The City of Jeffersontown selected GRW to provide design, bidding, construction administration and resident project representation services for an eight- to 10-foot-wide, 3.5-mile-long paved bicycle and pedestrian path split into two phases for construction. The first phase of the trail is adjacent to Bluegrass Parkway from Hurstbourne Parkway to Watterson Trail. The second phase continues along Bluegrass Parkway from Watterson Trail to Tucker Station Road, then turns along Tucker Station Road adjacent to Papa John's Headquarters and terminates at Plantside Drive in Jeffersontown, KY. The multi-use path is part of the larger Jeffersontown Gaslight Recreational and Workplace Bicycle and Pedestrian Trail, and is intended to enhance the quality of life in the City by providing alternate means to the automobile. The path encourages physical fitness, family exercise, and creates a link between where people live and work.

The trail was design utilizes both asphalt and PCC concrete pavements, including the design of horizontal and vertical alignment, drainage features, typical sections, profiling, and easement acquisition. Massive coordination efforts with various utility companies, whose infrastructure was located within the trail's alignment, was an integral part of the project. Preliminary conversations verified that the underground utilities minimum depths would not be affected by excavation for the trail, and at-grade utilities were either moved away from the path or raised to match the trail's elevation and slope. This project was funded through a Congestion Mitigation and Air Quality Improvement (CMAQ) Program, which required coordination and approval of the Kentucky Transportation Cabinet's District 5 (KYTC D5) and the Office of Local Programs.

**Project Cost:** \$527,300

**Completion Date:** 2014

**Key Team Members:** Harvey Helm, Johnathan Thomas

### Covington 6th Street and Scott Boulevard Improvements

The City of Covington selected GRW to provide planning and design services for the reconstruction of approximately 0.5 miles of city streets, encompassing primarily West Sixth Street and Scott Boulevard. Work for this project, funded through the Kentucky Transportation Cabinet's Local Public Agency (LPA) program, includes placing electric and communications utilities underground, sidewalk replacement, and overall streetscape beautification including pedestrian-scale street lighting, decorative paving accents, curb bump outs and rain gardens. New signal systems will be provided for five intersections.

**Project Cost:** \$1,728,000

**Completion Date:** 2014

**Key Team Members:** Joe Bird, Rob Dinsmore

### Murray-Calloway County Middle School Safe Routes to School Sidewalks

As part of the Safe Routes to School program, GRW provided planning, design and construction administration services for sidewalk construction in Murray, KY. Located along the north side of College Farm Road and the east side of 18th Street, the project included approximately 7,000 LF of 5-foot wide sidewalk, numerous crosswalks, drainage improvements and all required permitting. The project was subject to the Office of Local Programs for review and approval as well as encroachment approval from the Kentucky Transportation Cabinet.

GRW worked closely with the City to develop a sidewalk alignment to preserve as many trees as possible because a fully grown tree eliminates 70% of the stormwater run-off within its canopy. Reduced stormwater run-off decreases sanitary sewer overflows which were the source of the City of Murray's current Agreed

Order with the Kentucky Division of Water. Therefore, the maintenance of tree canopy cover is a key element of the project and part of the City's overall objective to maintain compliance with the Clean Water Act.

**Project Cost:** \$191,010

**Completion Date:** 2010

**Key Team Members:** Harvey Helm, John Langley

### Louisville Metro Urban Bicycle Network

Louisville Metro is providing a network of bike path connectivity in various areas of the downtown area to provide back roads with low stress traffic for bicycle connectivity. GRW is completing the design for Phase 1 which includes 18 miles of marked bike lanes. The project is funded by a CMAQ grant.

**Project Cost:** \$125,000

**Completion Date:** 2014

**Key Team Members:** Harvey Helm

### Lewisburg L&R Trail, Phase I

No longer in service, the historic L&R Railroad operated between Ronceverte and Lewisburg, West Virginia. Chapman Technical Group, a wholly-owned subsidiary of GRW, provided landscape architecture design services for Phase I of this multi-use trail which will connect the two cities. The first phase started in downtown Lewisburg and wound through residential neighborhoods before ending at the highway. Future phases will continue the trail toward Ronceverte.

**Project Cost:** \$200,000

**Completion Date:** 2010

**Key Team Members:** Joe Bird, Roger Kennedy

### Meadow River Rail Trail

Chapman Technical Group provided landscape architecture design services for the construction of a pedestrian/bicycle trail over 16.7 miles of rail bed, including the construction of decks on four railroad trestles, and the design of trailheads at strategic locations.

**Project Cost:** \$1,200,000

**Completion Date:** 2014

### Shepherdstown Pedestrian/Bicycle Trail

The new pedestrian/bicycle trail will parallel route WV 45 through historic Shepherdstown, West Virginia, site of the formation of the first U.S. Army. The trail will be approximately 4,000 feet long and will require close coordination with local and state historic groups to maintain sensitive cultural heritage resources. Chapman Technical Group provided landscape architecture design services.

**Project Cost:** \$650,000

**Completion Date:** 2014



## Local Office

As shown in Attachment 1, GRW and all of our proposed subconsultants have headquarters in Lexington, KY.

### Attachment 1

#### Project Team Location(s)

Prime Consultant	Location (City, State)	Date Office Established	Total Number of Employees	No. of Employees expected to work on DOE projects
Headquarters	Lexington, KY	6/22/1964	143	12
Local Office	Lexington, KY	6/22/2964	143	12
PM Location	Lexington, KY			
	St. Albans, WV	11/1/2013	23	3
<b>SubConsultants</b>				
Name:	Hall-Harmon Engineers	Aug. 1994	7	7, if needed
Service Provided	Civil Eng. & Surveying			
Headquarters	Lexington, KY	Aug. 1994	7	7, if needed
Local Office	Lexington, KY	Aug. 1994	7	7, if needed
Name:	Third Rock Consultants	1/1/2001	26	5
Service Provided	Environmental			
Headquarters	Lexington, KY	1/1/2001	24	5
Local Office	Lexington, KY	1/1/2001	24	5
Name:	Consulting Services, Inc.	2009	43	9
Service Provided	Geotechnical			
Headquarters	Lexington, KY	2009	31	9
Local Office	Lexington, KY	2009	31	9

#### Notes:

1. "Headquarters" refers to the corporate office that provides project support to the local office, if applicable. If support comes from multiple locations, use the blank spaces in the form to provide relevant information.
2. Listing of sub-consultants is optional and should only be provided if the prime consultant considers the sub-consultant(s) services to be essential to meeting the required qualifications. In this event, documentation from the subconsultant(s) shall be submitted in the SOQ that provides a commitment to be a part of the prime consultant's team in providing the stated services. In such cases, for the purpose of evaluating the proposals, committed sub-consultants will be considered to be part of the prime consultant's workforce. Prime consultants face potential disqualification from future work if DOE finds that the identified sub-consultants are not being utilized to deliver assigned work products.

## Disadvantaged Business Enterprise (DBE) Involvement

GRW understands and agrees with LFUCG's 10% MWDBE goal. For this contract, we propose to use the certified WBE subconsultants Hall-Harmon Engineers and Third Rock Consultants to meet your goals.



### LFUCG MWDBE PARTICIPATION FORM

Bid/RFP/Quote Reference # 13-2014

The MWDBE subcontractors listed have agreed to participate on this Bid/RFP/Quote. If any substitution is made or the total value of the work is changed prior to or after the job is in progress, it is understood that those substitutions must be submitted to Central Purchasing for approval immediately.

MWDBE Company, Name, Address, Phone, Email	Work to be Performed	Total Dollar Value of the Work	% Value of Total Contract
1. Hall-Harmon Engineers 1081 Dove Run Rd, Ste 203 Lexington, KY 40502 (859) 269-3150 Kitty.Hall-Harmon@HHEnet.com	Surveying	TBD	5%
2. Third Rock Consultants, LLC 2526 Regency Rd, Ste 180 Lexington, KY 40503 859.977.2000 akerley@thirdrockconsultants.com	Environmental	TBD	5%
3.			
4.			

The undersigned company representative submits the above list of MWDBE firms to be used in accomplishing the work contained in this Bid/RFP/Quote. Any misrepresentation may result in the termination of the contract and/or be subject to applicable Federal and State laws concerning false statements and false claims.

GRW  
 \_\_\_\_\_  
**Company**

March 25, 2014  
 \_\_\_\_\_  
**Date**

*Ken D. Silfver*  
 \_\_\_\_\_  
**Company Representative**

President  
 \_\_\_\_\_  
**Title**

## SECTION 5.0

## Contract 8 – Construction Inspection

## 5.0 Contract 8: Construction Inspection

### Firm Qualifications

GRW was founded in 1965 by Mr. G. Reynolds Watkins to provide professional design services to federal, state, municipal and private industry clients. Today GRW has grown to become a full-service engineering, architectural and geospatial services firm with a staff of more than 250 professionals and offices in Kentucky, Indiana, Ohio, Tennessee and West Virginia. Watkins' insistence on technical excellence and personal service lives on as the guiding principle at GRW. **This dedication to service has resulted in repeat clients providing 90 percent of GRW's current workload.**

GRW offers comprehensive technical expertise for all types of infrastructure from concept design through construction administration and inspection. **Our wide range of professional services includes:**

- Transportation Engineering
- Civil/Site Engineering
- Electrical Engineering
- Mechanical Engineering
- Structural Engineering
- Water, Wastewater and Stormwater System Engineering
- Architecture
- Landscape Architecture
- Master Planning
- Construction Administration and Resident Project Representation (Inspection)
- Aerial Mapping and Surveying
- Geographic Information Services
- GPS and Conventional Surveying
- LiDAR (Aerial, Mobile, and Terrestrial)
- Cost Estimating
- Sustainable Design

Experienced with a variety of transportation projects, GRW has completed large roadway and bridge construction projects and federal aid-funded Local Public Agency projects, such as multi-use trails and sidewalks. Our Kentucky Transportation Cabinet experience includes the design of hundreds of miles of streets, roads, and highways, as well as associated sidewalks, bike lanes, and over the past dozen years, GRW has completed more than \$300,000,000 in transportation projects. For many of these projects, GRW has provided construction administration and/or inspection services.

### Partial Experience Summary for Construction Inspection

- Crossfield Drive Extension, Versailles, KY
- Bluegrass Parkway Bicycle and Pedestrian Trail Phases I & II
- Downtown Revitalization/Roundabout, Hodgenville, KY
- Cayton Road Extension, Boone County, KY
- Old Clubhouse Lane, Keeneland, Lexington, KY
- State Route 32 Reconstruction and Streetscape Project, Yorktown, IN (Indiana DOT)



GRW is KYTC-prequalified in 17 categories including:

- Construction Project Supervision
- Urban Roadway Design
- Rural Roadway Design
- Traffic Engineering
- Road Centerline Data Collection
- Highway Planning
- Structural Design (Spans under 500')
- Pedestrian and Bicycle Facility Planning & Design
- Electrical Engineering Roadway Lighting
- Highway Noise
- EIS Writing & Coordination
- Surveying





- Indiana Gateway Industrial Park State Route 1 Intersection Design, Wayne County, IN
- Keeneland Race Course New Entrance and Access Road, Lexington, KY
- Murray-Calloway County Middle School Safe Routes to School Sidewalks, Murray, KY
- David Lane/Stop 13 Roadway Improvements, Indianapolis, IN
- State Route 37 (38th Street) Pavement Reconstruction, Indianapolis, IN
- Morris Street Drainage and Road Improvements, Indianapolis, IN
- Sargent Road Drainage and Road Improvements, Indianapolis, IN
- Stop 11 and David Lane Culvert and Road Improvements, Indianapolis, IN
- Rising Sun Community Park Access Road, Rising Sun, IN
- Idle Hour North Stormwater Improvements, Lexington, KY
- College Street Drainage Basin Stormwater Improvements, Hodgenville, KY



## Subconsultants

**Hall-Harmon Engineers, Inc.** (HHE) is a Lexington, Kentucky firm specializing in civil engineering and land surveying with major emphasis in transportation facilities, site development, site utilities and land surveying. HHE has extensive experience with providing engineering design and surveying services on various types of projects for the Lexington-Fayette Urban County Government (LFUCG) as both prime consultant and as a subconsultant which include surveying, roadway design, bike lane/trail design, storm water and sanitary sewer design in addition to being very familiar with LFUCG Practices and Policies, Standard Drawings and Infrastructure Manuals.

HHE – a **certified DBE/WBE** with Kentucky Transportation Cabinet (KYTC) for the past fifteen years – is prequalified with KYTC to perform the following services: Rural Roadway Design, Urban Roadway Design, Surveying, Pedestrian and Bicycle Facility Planning & Design, Airport Design, Airport Master Planning, and UST & HAZMAT Site Analysis / Preliminary Site Assessment.

## Project Team

For this contract, we have carefully selected a number of GRW staff members based on their related experience and expertise in the various services required. An organizational chart illustrating GRW team members, as well as DBE subconsultants, is provided below. Key project team member resumes, including office locations, are also included in this section.

Key project team member resumes are also included in this section. Employee office locations are noted on the resumes. We understand that your selection criteria involves the evaluation of team members' relevant work within the last five years; therefore, the year of project completion is listed at the end of each project example provided on GRW's resumes.



**Project Manager**

Harvey Helm, PE, LEED AP, PLS

**Construction Administration/Inspection**

Allison Chadwell, PE, LEED AP

Roderick Saylor, PE

John Langley

Greg Hobson

Hall-Harmon Engineers (WBE)

# Harvey Helm, PE, LEED AP, PLS

## GRW Project Manager



**Office Location:** Lexington

**Years of Experience/Years with GRW:** 40/40

### Education

B.S., Civil Engineering, 1977, University of Kentucky

### Registration

Professional Engineer: KY, KS, TN, IN, OH, MS, GA, NC, MI, AL, AR, WV

LEED Accredited Professional, Building Design + Construction

Professional Land Surveyor: KY

Certified Professional in Erosion and Sediment Control

### Qualifications and Similar Project Experience

With four decades of experience in the design and construction management of transportation projects, Mr. Helm has accomplished several projects for the Kentucky Department of Transportation and the Lexington-Fayette Urban County Government. A few of these projects include:

**Versailles Crossfield Drive Extension, Versailles, KY** - Principal. Corridor planning and design for an approximately 0.5-mile connector road between Lexington Street and US 60 Bypass in Versailles to relieve nearby congestion and create opportunities for infill development. Documents included typical sections and details, right-of-way plans and acquisition, plans and profiles, hydraulics, cross sections, cost estimates, surveying, specifications and bidding documents. Services included construction administration and inspection. (2012)

**LFUCG Idle Hour North Stormwater Improvements, Lexington, KY** - Project Manager. Design and construction assistance services for approximately 2,000 LF of storm sewer pipe, ranging in size from 15 to 42 inches in diameter; 9 new manholes; 13 new curb inlets; and a cast-in place headwall. (2014)

**Keeneland Association Old Clubhouse Lane, Lexington, KY** – Project Manager. Design and construction administration for reconstruction of Old Clubhouse Lane on Keeneland’s property. Included installation of electrical and communication duct banks, storm sewer improvements and pavement reconstruction and overlay. (2013)

**Murray-Calloway County Middle School Safe Routes to School Sidewalks, Murray, KY** - QA/QC. Planning, design and construction administration services for sidewalk construction as part of Safe Routes to School program. Included approximately 7,000 LF of 5-foot wide sidewalk along with numerous crosswalks, drainage improvements and all required permitting. (2010)

**Hodgenville Downtown Revitalization, Hodgenville, KY** - Project Manager. Fast-track design and construction administration services for pedestrian-friendly traffic roundabout (encompassing the city's Abraham Lincoln monument) and renovation of historic town square near Abraham Lincoln's birthplace, in preparation for the Lincoln Bicentennial Celebration. Included signage, parking, brick paver fields, lighting, underground utilities installation (water, sanitary and storm sewer, and electric) and surface drainage. Provided improved traffic flow, increased pedestrian safety, and increased visibility and accessibility for local businesses. (2007)

# Alison Chadwell, PE, LEED AP

## GRW Project Engineer



**Office Location:** Lexington

**Years of Experience/Years with GRW:** 12/9

### Education

B.S., Civil Engineering, 2003, University of Kentucky

### Registration

Professional Engineer: KY

Licensed Surveyor in Training: KY

LEED Accredited Professional

### Qualifications and Similar Project Experience

Ms. Chadwell has more than a decade of experience and is proficient with AutoCAD, SurvCAD, StormCAD, WaterCAD, Heastod Method's products, and SEDCAD 4. A few of her relevant projects include:

**Versailles Crossfield Drive Extension, Versailles, KY** - Project Engineer. Corridor planning and design for an approximately 0.5-mile connector road between Lexington Street and US 60 Bypass in Versailles to relieve nearby congestion and create opportunities for infill development. Project included coordination with existing and proposed adjacent land uses, the City of Versailles, the land owners, and the Kentucky Transportation Cabinet. Project affects major intersections of the two main arterials and includes a stream crossing and associated environmental permitting. Documents included typical sections and details, right-of-way plans and acquisition, plans and profiles, hydraulics, cross sections, cost estimates, surveying, specifications and bidding documents. Services included construction administration and inspection. (2012)

**Lexington Liberty/Todds Road (KY 1927) Section 2, Lexington, KY** - Project Engineer. Final design services for the widening to three lanes of a 1.6-mile section 2 of KY 1927 Liberty/Todds Road in Fayette County from I-75 to Andover Forest Drive. Closely coordinated with the LFUCG Division of Engineering and the Kentucky Department of Highways, the project reduces congestion and improves safety and includes a typical three-lane urban roadway section with bicycle lanes, sidewalks and handicap ramps; center two-way left turn lane and additional travel lanes and right turn lanes; curb and gutters, and roadway drainage primarily via storm sewers. Included field data collection and survey work. (2015)

**Lexington Polo Club Boulevard Connection, Lexington, KY** - Project Engineer. Survey and final design services for connection of two pieces of Polo Club Boulevard in Fayette County from Deer Haven Lane to Todds Road. Project, including new 200-long, double 8' x 4' box culvert, curb/gutter and landscaping enhancements, curb/gutter and landscaping enhancements, will complete critical section of boulevard roadway system as envisioned in Lexington-Fayette Urban County Planning Commission Expansion Area Master Plan. (2014)

**McDonalds Site Evaluation and Design, Frankfort, KY** - Project Manager. Site development plans for new restaurant. Pervious pavement and rain gardens were utilized in design to minimize stormwater impact to adjacent properties. (2011)

**The J.M. Smucker Company Drop Lot Site Improvements, Lexington, KY** - Project Manager. Site analysis and design services for paving gravel drop lot at The J.M. Smucker Company's JIF plant in Lexington, KY. Study portion included hydraulic analysis to determine if stormwater conveyance system and detention pond would have capacity required for paved drop lot area. Subsequent site and paving design of asphalt pavement cap provided solution to dust issues at plant which posed a potential contaminant to food processing facility. (2013)

# Roderick Saylor, PE

## GRW Project Engineer



**Office Location:** Lexington

**Years of Experience/Years with GRW:** 9/9

### Education

B.S., Civil Engineering, 2006, University of Kentucky

### Registration

Professional Engineer: KY

### Qualifications and Similar Project Experience

Mr. Saylor has nine years of experience with roadway, drainage and site development planning and design. He has also worked on several master planning and design projects under GRW's Indefinite Delivery Contract with the National Guard Bureau including assignments for both the Air National Guard and the Army National Guard. A few of his projects include:

**Asbury Theological Seminary Student Housing Complex, Wilmore, KY** - Civil Engineer. Site design services for Asbury Theological Seminary's new multi-phase North Campus Housing Project located on a 31-acre site. Phase A consisted of 100 town homes for family housing and Phase B consists of 5 dormitory-style housing units. Phase C consists of an additional 50 town homes situated on land adjacent to the 100 Phase A town homes in an area known as Kalas Village. Phase C includes a community center, as well as tennis, volleyball and basketball courts. Included design charrette and design of the roadway alignments, water mains, and storm and sanitary sewers. (2012)

**Fort Campbell Fire Fighting and Rescue Training Facility, Fort Campbell, KY** - Project Manager. Engineering design and construction administration services for design-build of U.S. Army firefighting and rescue training facility at Fort Campbell, KY. Included helicopter concrete pad for aircraft fire training; a concrete foundation for multi-story training building; large staging/parking area; and two small infiltration basins. (2012)

**UK Soccer Field Improvements, Lexington, KY** - Project Manager. Design-build renovation of UK's NCAA regulation-sized soccer field to include new drainage system and field resurface with Tifway 419 Bermuda Grass. Drainage system consists of 4-inch perforated pipe under-drains constructed in trenches beneath 5.5 inches of a sand cap base capable of allowing percolation of a 6-inch-per-hour rainfall within 30 minutes of the storm event. Provided construction inspection services. (2011)

**McDonalds Site Evaluation and Design, Frankfort, KY** - Civil Engineer. Site investigation reports, development plans and construction documents for more than 20 restaurants in Kentucky, some of which have involved biofiltration or underground detention. Provided construction inspection services. (2012-14)

# John Langley

## GRW Resident Project Representative



**Office Location:** Lexington      **Years of Experience/Years with GRW:** 43/43

**Professional Affiliations and Training**  
NASSCO Pipeline Assessment & Certification Program

### Qualifications and Similar Project Experience

Mr. Langley has more than four decades of experience with the design and construction inspection of infrastructure projects. A few of his relevant projects include:

**Murray-Calloway County Middle School Safe Routes to School Sidewalks, Murray, KY** - Construction administration services for sidewalk construction as part of Safe Routes to School program. Included approximately 7,000 LF of 5-foot wide sidewalk along with numerous crosswalks, drainage improvements and all required permitting. (2010)

**Hodgenville College Street Drainage Basin Stormwater Improvements, Hodgenville, KY** - Design and construction inspection services for stormwater improvements project. Includes replacing/upgrading sections of storm piping (900 LF of 42" and 48" elliptical concrete pipe), re-grading and expanding ditches, and rerouting portions of storm sewer to improve hydraulics, increase capacity and eliminate storm water flows going into sanitary sewer system. Funding is from Kentucky Infrastructure Authority State Revolving Fund Drinking Water and Clean Water programs. (2013)

**Industrial Park Sanitary Sewer Extension, Murray, KY** (2010)

**Murray Brinn Road Sanitary Sewer Extension, Murray, KY** - 1,400 LF of 8-inch gravity sewers for an area in north Murray where existing homes inside the city limits were being served by individual septic systems.

**Wilmore Maxey Street Sewer Rehabilitation, Wilmore, KY** - Replacement of 4, 142 LF of 15" gravity sewer with 24" gravity sewer; cleaning and TV inspection of 25,300 LF of 6" to 12" sewers; 360 LF of root removal in 6" to 10" sewers; removal and replacement of 760 LF of 6" to 12" sewers; 6,960 LF of sliplining of 6", 8" and 12" sewers and other appurtenant work. (2010)

**Murray Southwest Area Gravity Sewer, Murray, KY** - 13,300 LF of 8-inch gravity sewers and 2,000 LF of 10-inch sewers for residences served by individual septic systems in an area being annexed by the City and required by the annexation agreement. (2009)

**Murray Sherwood Forest Interceptor Sewer Extension, Murray, KY** - .Approximately 6,500 LF of 8" and 12" gravity sewers, extending service to the unsewered southeast side of the city. (2005)

# Greg Hobson

## GRW Resident Project Representative



**Office Location:** Lexington

**Years of Experience/Years with GRW:** 32/2

### Similar Project Experience

**Hodgenville College Street Drainage Basin Stormwater Improvements, Hodgenville, KY** - Resident Project Representative. Stormwater improvements project includes replacing/upgrading sections of storm piping (900 LF of 42" and 48" elliptical concrete pipe), re-grading and expanding ditches, and rerouting portions of storm sewer to improve hydraulics, increase capacity and eliminate storm water flows going into sanitary sewer system. Funding is from Kentucky Infrastructure Authority State Revolving Fund Drinking Water and Clean Water programs. (2013)

**Versailles Crossfield Drive Extension, Versailles, KY** - Resident Project Representative. Approximately 0.5-mile connector road between Lexington Street and US 60 Bypass in Versailles to relieve nearby congestion and create opportunities for infill development. Project included coordination with existing and proposed adjacent land uses, the City of Versailles, the land owners, and the Kentucky Transportation Cabinet. Project affects major intersections of the two main arterials and includes a stream crossing and associated environmental permitting. (2012)

**Burkesville Wet Weather Flow Abatement Program, Burkesville, KY** - Resident Project Representative. New 0.75 MG wet weather flow equalization basin (above ground, prestressed concrete) located at collection system site of City's primary overflow manhole. Work also includes replacement of existing pumps and controls at City's main Upper River Street Pumping Station; overflow weir box on existing main line sewer; and new duplex submersible pumping station to convey peak wet weather flows to EQ basin. (2013)

**Falmouth Klee Property Sewer Line Extension, Falmouth, KY** - Resident Project Representative. 160 LF of 12" and 8" gravity sewer (including 83 LF bored and jacked beneath US 27) to serve planned and future commercial and residential developments. (2012)

**Hodgenville Sanitary Sewer Rehabilitation, Hodgenville, KY** - Resident Project Representative. Repairs and/or replacement of facilities in various locations to eliminate or decrease frequency of overflows, and reduce the volume of wet weather flows being treated at the wastewater plant. (2013)

**Jonesborough Wastewater Treatment Plant Expansion, Phase II - Effluent Pump Station and 12" Outfall Line, Jonesborough, TN** - Resident Project Representative. Phase II of two-phase project (split to maximize multiple grant funding sources) to expand plant from 0.5 MGD to 1.0 MGD and relocation discharge to Nolichucky River, seven miles to south. Work encompassed 36,000 LF of 12-inch outfall line, new effluent pump station, and new cascade aerator. Required close coordination with archaeological surveyor to ensure alignment avoided sensitive areas. Funding obtained from Economic Development Administration (EDA), and USDA Rural Development. (2012)

**Scottsville Wastewater Treatment Plant Improvements, Scottsville, KY** - Resident Project Representative. Improvements to 5 MGD wastewater treatment plant. Various improvements include waste activated sludge pump station with two 250 gpm submersible pumps, flow splitter box, 24-inch and 20-inch ductile iron piping; and 8-inch and 10-inch ductile iron RAS force mains. (2012)

## List of Clients

These references may be contacted to verify the quality of our work and their satisfaction with our performance. GRW believes performance is best measured from the client's perspective. With repeat clients, such as the Lexington-Fayette Urban County Government, the Kentucky Transportation Cabinet and others, providing more than 90 percent of GRW's current workload, we believe this is a testament to our business philosophy of providing high-quality, close, personal service.

### **Lexington-Fayette Urban County Government**

- Idle Hour North Stormwater Improvements  
Chris Dent, PE  
(859) 425-2521 | [cdent@lexingtonky.gov](mailto:cdent@lexingtonky.gov)

### **Boone County Public Works**

- Cayton Road Extension  
Gregory Sketch, Director of Public Works  
(859) 334-3600 | [GSketch@boonecountyky.org](mailto:GSketch@boonecountyky.org)

### **City of Hodgenville, KY**

- Downtown Revitalization/Roundabout (ACEC Engineering Excellence Honor Award)
- College Street Drainage Basin Stormwater Improvements

Terry Cruse, Mayor  
(270) 358-3832 | [hville@windstream.net](mailto:hville@windstream.net)

### **City of Jeffersontown, KY**

- Bluegrass Parkway Bicycle and Pedestrian Trail Phases I & II
- Bluegrass Commerce Park Infrastructure Improvements

Matt Meunier, Assistant to the Mayor  
(502) 267-8333 | [mmeunier@jeffersontownky.com](mailto:mmeunier@jeffersontownky.com)

### **Kentucky Transportation Cabinet, District 5**

- Hurstbourne Parkway, Bardstown to Fern Valley Roads (Project of the Year Award, Transportation Category, American Public Works, Kentucky Chapter)
- Hurstbourne Parkway, Linn Station Road to Timberwood Circle
- Hurstbourne Parkway at Shelbyville Road Improvements

Matt Bullock, Chief District Engineer  
(502) 210-5400 | [matt.bullock.ky.gov](mailto:matt.bullock.ky.gov)

### **City of Versailles, KY**

- Crossfield Drive Extension  
Bart Miller, Public Works Director  
(859) 873-2245 | [bmiller@cityhall.versaillesky.com](mailto:bmiller@cityhall.versaillesky.com)

### **City of Murray, KY**

- Murray-Calloway County Middle School Safe Routes to School Sidewalks  
Peyton Mastera, Project Administrator  
(270) 762-0350 | [Peyton.Mastera@murrayky.gov](mailto:Peyton.Mastera@murrayky.gov)

### **Federal Bureau of Prisons**

- Yazoo City U.S. Penitentiary and Satellite Camp Roadways and Bridge

Jody Smith, Project Manager  
(202) 514-6456 | [jlsmith@bop.gov](mailto:jlsmith@bop.gov)

### **City of St. Albans, WV\***

- St. Albans Streetscape Phases I-IV

Dick Callaway, Mayor  
(304) 727-2971 | [samayor@suddenlinkmail.com](mailto:samayor@suddenlinkmail.com)

### **West Virginia Division of Highways\***

- Meadow River Trail
- Shepherdstown Pedestrian Bicycle Trail
- L&R Trail Phase II
- Chesapeake Sidewalk Project Phase II

Ryan C. Burns, Program Manager  
(304) 558-9297 | [Ryan.c.burns@wv.gov](mailto:Ryan.c.burns@wv.gov)

### **City of Lewisburg, WV\***

- L&R Trail Phase I
- Lewisburg Sidewalk Phase II

John Manchester, Mayor  
(304) 645-2080 | [jmanchester@lewisburg-wv.com](mailto:jmanchester@lewisburg-wv.com)  
*\*Reference for Chapman Technical Group, a wholly-owned subsidiary of GRW*



## Similar Projects

This section highlights a few recent examples of GRW's accomplishments with projects similar to yours.

### Versailles Crossfield Drive Extension

GRW completed corridor planning and design for an approximately 0.5-mile connector road between Lexington Street and US 60 Bypass in Versailles to relieve congestion at the nearby intersection and create opportunities for infill development at this gateway to the City. The project included coordination with existing and proposed adjacent land uses, the City of Versailles, the land owners, and the Kentucky Transportation Cabinet. The project affects major intersections of the two main arterials south of Versailles and includes a stream crossing and associated environmental permitting. The project documents included typical sections and details, right-of-way plans and acquisition, plans and profiles, hydraulics, cross sections, cost estimates, surveying, specifications and bidding documents, **construction administration and inspection.**

**Project Cost:** \$2,000,000

**Completion Date:** 2012

**Key Team Members:** Harvey Helm, Alison Chadwell

### Hodgenville Downtown Revitalization and Roundabout

GRW designed a fast-track project renovating the town square to improve traffic flow and increase safety for residents and visitors while maintaining the historical integrity of the town square. The project involved improvements to the central square area of downtown Hodgenville, which is a National Register Historic District, through the design of a roundabout to ease traffic flow and allow visitors to safely visit a monument to Abraham Lincoln at its center. The use of a roundabout, which is a transportation feature not commonly found in the United States, went beyond the typical design to encompass parking areas, splitter islands as crosswalks, all to ensure the safety of both pedestrians and vehicles. Features included signage, parking, brick paver fields, lighting, underground utilities installation (water, sanitary and storm sewer, and electric) and surface drainage. The entire project, including street lights, was designed in accordance with KTC standards since both intersecting roads are state highways. **GRW also provided construction administration and inspection services.**

**This project received an Engineering Excellence Honor Award from the American Council of Engineering Companies of Kentucky.**

**Project Cost:** \$1,117,633

**Completion Date:** 2007

**Key Team Members:** Harvey Helm, Monty Maynard

### Keeneland Association Old Clubhouse Lane Improvements

GRW provided design and construction administration services for the upgrade of Old Clubhouse Lane on Keeneland Association property. Old Clubhouse Lane is one of the main access roads through the property providing access to the barn area. The project including installation of duct bank for electrical and communications systems, improvements to the roadway drainage and reconstruction of portions of the roadway and pavement overlay. Required coordination with numerous existing utility lines and access to adjacent barns.

**Project Cost:** \$350,000

**Completion Date:** 2013

**Key Team Members:** Harvey Helm

## Murray-Calloway County Middle School Safe Routes to School Sidewalks

As part of the Safe Routes to School program, GRW provided planning, design and construction administration services for sidewalk construction in Murray, KY. Located along the north side of College Farm Road and the east side of 18th Street, the project included approximately 7,000 LF of 5-foot wide sidewalk, numerous crosswalks, drainage improvements and all required permitting. The project was subject to the Office of Local Programs for review and approval as well as encroachment approval from the Kentucky Transportation Cabinet.

GRW worked closely with the City to develop a sidewalk alignment to preserve as many trees as possible because a fully grown tree eliminates 70% of the stormwater run-off within its canopy. Reduced stormwater run-off decreases sanitary sewer overflows which were the source of the City of Murray's current Agreed Order with the Kentucky Division of Water. Therefore, the maintenance of tree canopy cover is a key element of the project and part of the City's overall objective to maintain compliance with the Clean Water Act.

**Project Cost:** \$191,010

**Completion Date:** 2010

**Key Team Members:** Harvey Helm, John Langley

## Hodgenville College Street Drainage Basin Stormwater Improvements

GRW provided design, construction administration and inspection services for stormwater improvements in the lower portion of the College Street drainage basin. Work included replacing and upgrading sections of the existing storm piping, re-grading and expanding ditches, and rerouting portions of the storm sewer. The new storm sewer system, which includes 900 LF of 42" and 48" elliptical concrete pipe, improved the hydraulics and increased the capacity of the storm sewer, and eliminated occurrences of storm water flows going into the sanitary sewer system.

**Project Cost:** \$347,000

**Completion Date:** 2013

**Key Team Members:** Greg Hobson, John Langley

## LFUCG Idle Hour North Stormwater Improvements

Following completion of an engineering study and report to examine reoccurring flooding problems, evaluate potential solutions and make recommendations in the Idle Hour area in Lexington, KY, the Lexington-Fayette County Urban Government selected GRW to provide design, easement acquisition, and construction administration for stormwater improvements. Improvements include approximately 2,000 LF of storm sewer pipe, ranging in size from 15 to 42 inches in diameter; 9 new manholes; 13 new curb inlets; and a cast-in place headwall.

**Project Cost:** \$520,000

**Completion Date:** 2014

**Key Team Members:** Harvey Helm, Mary Beth Robson

## Local Office

As shown in Attachment 1, GRW and our proposed subconsultant have headquarters in Lexington, KY, and 100 percent of the work will be performed by staff in Lexington.

Attachment 1

### Project Team Location(s)

Prime Consultant	Location (City, State)	Date Office Established	Total Number of Employees	No. of Employees expected to work on DOE projects
Headquarters	Lexington, KY	6/22/1964	143	12
Local Office	Lexington, KY	6/22/2964	143	12
PM Location	Lexington, KY			
<b>SubConsultants</b>				
Name:	Hall-Harmon Engineers	Aug. 1994	7	7, if needed
Service Provided	Construction Inspection			
Headquarters	Lexington, KY	Aug. 1994	7	7, if needed
Local Office	Lexington, KY	Aug. 1994	7	7, if needed
Name:				
Service Provided				
Headquarters				
Local Office				
Name:				
Service Provided				
Headquarters				
Local Office				

### Notes:

1. "Headquarters" refers to the corporate office that provides project support to the local office, if applicable. If support comes from multiple locations, use the blank spaces in the form to provide relevant information.
2. Listing of sub-consultants is optional and should only be provided if the prime consultant considers the sub-consultant(s) services to be essential to meeting the required qualifications. In this event, documentation from the subconsultant(s) shall be submitted in the SOQ that provides a commitment to be a part of the prime consultant's team in providing the stated services. In such cases, for the purpose of evaluating the proposals, committed sub-consultants will be considered to be part of the prime consultant's workforce. Prime consultants face potential disqualification from future work if DOE finds that the identified sub-consultants are not being utilized to deliver assigned work products.

## Disadvantaged Business Enterprise (DBE) Involvement

GRW understands and agrees with LFUCG's 10% MWDBE goal. For this contract, we propose to use the certified WBE subconsultant Hall-Harmon Engineers to meet your goals.



### LFUCG MWDBE PARTICIPATION FORM Bid/RFP/Quote Reference # 13-2014

The MWDBE subcontractors listed have agreed to participate on this Bid/RFP/Quote. If any substitution is made or the total value of the work is changed prior to or after the job is in progress, it is understood that those substitutions must be submitted to Central Purchasing for approval immediately.

MWDBE Company, Name, Address, Phone, Email	Work to be Performed	Total Dollar Value of the Work	% Value of Total Contract
1. Hall-Harmon Engineers 1081 Dove Run Rd, Ste 203 Lexington, KY 40502 (859) 269-3150 Kitty.Hall-Harmon@HHEnet.com	Construction Inspection	TBD	10%
2.			
3.			
4.			

The undersigned company representative submits the above list of MWDBE firms to be used in accomplishing the work contained in this Bid/RFP/Quote. Any misrepresentation may result in the termination of the contract and/or be subject to applicable Federal and State laws concerning false statements and false claims.

GRW  
 \_\_\_\_\_  
**Company**

March 25, 2014  
 \_\_\_\_\_  
**Date**

*Ken D. Silke*  
 \_\_\_\_\_  
**Company Representative**

President  
 \_\_\_\_\_  
**Title**

**SECTION 6.0**

**Additional LFUCG  
Proposal Forms**

Firm Submitting Proposal: GRW Engineers, Inc.

Complete Address: 801 Corporate Drive Lexington KY 40503  
Street City Zip

Contact Name: Harvey Helm Title: Vice President

Telephone Number: 859.223.3999 Fax Number: 859.223.8917

Email address: HHelm@grwinc.com



Lexington-Fayette Urban County Government  
DEPARTMENT OF FINANCE & ADMINISTRATION

Jim Gray  
Mayor

William O'Mara  
Commissioner

**ADDENDUM #1**

RFP Number: #**13-2014**

Date: March 3, 2014

Subject: **Request for Qualifications for  
Professional Engineering Services**

Please address inquiries to:  
Theresa Maynard (859) 258-3320

**TO ALL PROSPECTIVE BIDDERS:**

Please be advised of the following clarifications to the above referenced RFP:

*Paragraph two on page one should read as follows and agree with the date on the website:*

"Sealed proposals will be received in the Division of Central Purchasing, Room 338, Government Center, 200 East Main Street, Lexington, KY, 40507, until **2:00 PM**, prevailing local time, on **March 26, 2014.**"

*Paragraph one on page two should read as follows:*

**Deadline for questions after the Pre-proposal meeting shall be Tuesday, MARCH 12<sup>th</sup>, 2014 at 2:00 PM local time.**

Todd Slatin, Director  
Division of Central Purchasing

All other terms and conditions of the RFP and specifications are unchanged. This letter should be signed, attached to and become a part of your RFP.

**COMPANY:** GRW Engineers, Inc.

**ADDRESS:** 801 Corporate Drive, Lexington, KY 40503

**SIGNATURE OF PROPOSER:**



Lexington-Fayette Urban County Government  
DEPARTMENT OF FINANCE & ADMINISTRATION

Jim Gray  
Mayor

William O'Mara  
Commissioner

**ADDENDUM #2**

RFP Number: **#13-2014**

Date: March 7, 2014

Subject: **Request for Qualifications for  
Professional Engineering Services**

Please address inquiries to:  
Theresa Maynard (859) 258-3320

**TO ALL PROSPECTIVE BIDDERS:**

Please be advised of the following clarifications to the above referenced RFP:

*Disregard Addendum #1 issued on this page earlier today, March 7, 2014. That addendum was for RFP #14-2014 Request for Qualifications – Supplemental Legal Services and posted to the page for RFP #13-2014 in error.*

Todd Slatin, Director  
Division of Central Purchasing

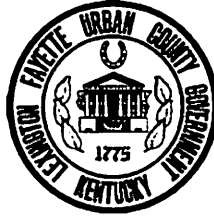
All other terms and conditions of the RFP and specifications are unchanged. This letter should be signed, attached to and become a part of your RFP.

**COMPANY:** GRW Engineers, Inc.

**ADDRESS:** 801 Corporate Drive, Lexington, KY 40503

**SIGNATURE OF PROPOSER:** *For D. Sullivan*





Lexington-Fayette Urban County Government  
DEPARTMENT OF FINANCE & ADMINISTRATION

Jim Gray  
Mayor

William O'Mara  
Commissioner

**ADDENDUM #3**

RFP Number: **#13-2014**

Date: March 17, 2014

Subject: **Request for Qualifications for  
Professional Engineering Services**

Please address inquiries to:  
Theresa Maynard (859) 258-3320

**TO ALL PROSPECTIVE BIDDERS:**

Please be advised of the following clarifications to the above referenced RFP:

- Sign in sheets from March 10<sup>th</sup>, 2014 Pre-Proposal Meeting attached
- Questions and Answers attached

Todd Slatin, Director  
Division of Central Purchasing

All other terms and conditions of the RFP and specifications are unchanged. This letter should be signed, attached to and become a part of your RFP.

**COMPANY:** GRW Engineers, Inc.

**ADDRESS:** 801 Corporate Drive, Lexington, KY 40503

**SIGNATURE OF PROPOSER:**

## **GENERAL PROVISIONS**

1. Each Respondent shall comply with all Federal, State & Local regulations concerning this type of service or good.

The Respondent agrees to comply with all statutes, rules, and regulations governing safe and healthful working conditions, including the Occupational Health and Safety Act of 1970, *29 U.S.C. 650 et. seq.*, as amended, and KRS Chapter 338. The Respondent also agrees to notify the LFUCG in writing immediately upon detection of any unsafe and/or unhealthful working conditions at the job site. The Respondent agrees to indemnify, defend and hold the LFUCG harmless from all penalties, fines or other expenses arising out of the alleged violation of said laws.

2. Failure to submit ALL forms and information required in this RFP may be grounds for disqualification.
3. Addenda: All addenda, if any, shall be considered in making the proposal, and such addenda shall be made a part of this RFP. Before submitting a proposal, it is incumbent upon each proposer to be informed as to whether any addenda have been issued, and the failure to cover in the bid any such addenda may result in disqualification of that proposal.
4. Proposal Reservations: LFUCG reserves the right to reject any or all proposals, to award in whole or part, and to waive minor immaterial defects in proposals. LFUCG may consider any alternative proposal that meets its basic needs.
5. Liability: LFUCG is not responsible for any cost incurred by a Respondent in the preparation of proposals.
6. Changes/Alterations: Respondent may change or withdraw a proposal at any time prior to the opening; however, no oral modifications will be allowed. Only letters, or other formal written requests for modifications or corrections of a previously submitted proposal which is addressed in the same manner as the proposal, and received by LFUCG prior to the scheduled closing time for receipt of proposals, will be accepted. The proposal, when opened, will then be corrected in accordance with such written request(s), provided that the written request is contained in a sealed envelope which is plainly marked "modifications of proposal".
7. Clarification of Submittal: LFUCG reserves the right to obtain clarification of any point in a bid or to obtain additional information from a Respondent.
8. Bribery Clause: By his/her signature on the bid, Respondent certifies that no employee of his/hers, any affiliate or Subcontractor, has bribed or attempted to bribe an officer or employee of the LFUCG.

9. Additional Information: While not necessary, the Respondent may include any product brochures, software documentation, sample reports, or other documentation that may assist LFUCG in better understanding and evaluating the Respondent's response. Additional documentation shall not serve as a substitute for other documentation which is required by this RFP to be submitted with the proposal,
10. Ambiguity, Conflict or other Errors in RFP: If a Respondent discovers any ambiguity, conflict, discrepancy, omission or other error in the RFP, it shall immediately notify LFUCG of such error in writing and request modification or clarification of the document if allowable by the LFUCG.
11. Agreement to Bid Terms: In submitting this proposal, the Respondent agrees that it has carefully examined the specifications and all provisions relating to the work to be done attached hereto and made part of this proposal. By acceptance of a Contract under this RFP, proposer states that it understands the meaning, intent and requirements of the RFP and agrees to the same. The successful Respondent shall warrant that it is familiar with and understands all provisions herein and shall warrant that it can comply with them. No additional compensation to Respondent shall be authorized for services or expenses reasonably covered under these provisions that the proposer omits from its Proposal.
12. Cancellation: If the services to be performed hereunder by the Respondent are not performed in an acceptable manner to the LFUCG, the LFUCG may cancel this contract for cause by providing written notice to the proposer, giving at least thirty (30) days notice of the proposed cancellation and the reasons for same. During that time period, the proposer may seek to bring the performance of services hereunder to a level that is acceptable to the LFUCG, and the LFUCG may rescind the cancellation if such action is in its best interest.

#### A. Termination for Cause

- (1) LFUCG may terminate a contract because of the contractor's failure to perform its contractual duties
- (2) If a contractor is determined to be in default, LFUCG shall notify the contractor of the determination in writing, and may include a specified date by which the contractor shall cure the identified deficiencies. LFUCG may proceed with termination if the contractor fails to cure the deficiencies within the specified time.
- (3) A default in performance by a contractor for which a contract may be terminated shall include, but shall not necessarily be limited to:
  - (a) Failure to perform the contract according to its terms,

- conditions and specifications;
- (b) Failure to make delivery within the time specified or according to a delivery schedule fixed by the contract;
  - (c) Late payment or nonpayment of bills for labor, materials, supplies, or equipment furnished in connection with a contract for construction services as evidenced by mechanics' liens filed pursuant to the provisions of KRS Chapter 376, or letters of indebtedness received from creditors by the purchasing agency;
  - (d) Failure to diligently advance the work under a contract for construction services;
  - (e) The filing of a bankruptcy petition by or against the contractor; or
  - (f) Actions that endanger the health, safety or welfare of the LFUCG or its citizens.

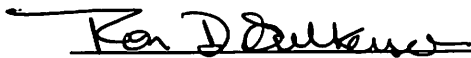
#### B. At Will Termination

Notwithstanding the above provisions, the LFUCG may terminate this contract at will in accordance with the law upon providing thirty (30) days written notice of that intent, Payment for services or goods received prior to termination shall be made by the LFUCG provided these goods or services were provided in a manner acceptable to the LFUCG. Payment for those goods and services shall not be unreasonably withheld.

13. **Assignment of Contract:** The contractor shall not assign or subcontract any portion of the Contract without the express written consent of LFUCG. Any purported assignment or subcontract in violation hereof shall be void. It is expressly acknowledged that LFUCG shall never be required or obligated to consent to any request for assignment or subcontract; and further that such refusal to consent can be for any or no reason, fully within the sole discretion of LFUCG.
14. **No Waiver:** No failure or delay by LFUCG in exercising any right, remedy, power or privilege hereunder, nor any single or partial exercise thereof, nor the exercise of any other right, remedy, power or privilege shall operate as a waiver hereof or thereof. No failure or delay by LFUCG in exercising any right, remedy, power or privilege under or in respect of this Contract shall affect the rights, remedies, powers or privileges of LFUCG hereunder or shall operate as a waiver thereof.
15. **Authority to do Business:** The Respondent must be a duly organized and authorized to do business under the laws of Kentucky. Respondent must be in good standing and have full legal capacity to provide the services specified under this Contract. The Respondent must have all necessary right and lawful authority to enter into this Contract for the full term hereof and that proper corporate or other action has been duly taken authorizing the Respondent to enter into this

Contract. The Respondent will provide LFUCG with a copy of a corporate resolution authorizing this action and a letter from an attorney confirming that the proposer is authorized to do business in the State of Kentucky if requested. All proposals must be signed by a duly authorized officer, agent or employee of the Respondent.

16. **Governing Law:** This Contract shall be governed by and construed in accordance with the laws of the Commonwealth of Kentucky. In the event of any proceedings regarding this Contract, the Parties agree that the venue shall be the Fayette County Circuit Court or the U.S. District Court for the Eastern District of Kentucky, Lexington Division. All parties expressly consent to personal jurisdiction and venue in such Court for the limited and sole purpose of proceedings relating to this Contract or any rights or obligations arising thereunder. Service of process may be accomplished by following the procedures prescribed by law.
17. **Ability to Meet Obligations:** Respondent affirmatively states that there are no actions, suits or proceedings of any kind pending against Respondent or, to the knowledge of the Respondent, threatened against the Respondent before or by any court, governmental body or agency or other tribunal or authority which would, if adversely determined, have a materially adverse effect on the authority or ability of Respondent to perform its obligations under this Contract, or which question the legality, validity or enforceability hereof or thereof.
18. Contractor understands and agrees that its employees, agents, or subcontractors are not employees of LFUCG for any purpose whatsoever. Contractor is an independent contractor at all times during the performance of the services specified.
19. If any term or provision of this Contract shall be found to be illegal or unenforceable, the remainder of the contract shall remain in full force and such term or provision shall be deemed stricken.

  
\_\_\_\_\_  
Signature

March 14, 2014  
\_\_\_\_\_  
Date

## AFFIDAVIT

Comes the Affiant, Ron D. Gilkerson, and after being first duly sworn, states under penalty of perjury as follows:

1. His/her name is Ron D. Gilkerson and he/she is the individual submitting the proposal or is the authorized representative of GRW Engineers, Inc., the entity submitting the proposal (hereinafter referred to as "Proposer").
2. Proposer will pay all taxes and fees, which are owed to the Lexington-Fayette Urban County Government at the time the proposal is submitted, prior to award of the contract and will maintain a "current" status in regard to those taxes and fees during the life of the contract.
3. Proposer will obtain a Lexington-Fayette Urban County Government business license, if applicable, prior to award of the contract.
4. Proposer has authorized the Division of Central Purchasing to verify the above-mentioned information with the Division of Revenue and to disclose to the Urban County Council that taxes and/or fees are delinquent or that a business license has not been obtained.
5. Proposer has not knowingly violated any provision of the campaign finance laws of the Commonwealth of Kentucky within the past five (5) years and the award of a contract to the Proposer will not violate any provision of the campaign finance laws of the Commonwealth.
6. Proposer has not knowingly violated any provision of Chapter 25 of the Lexington-Fayette Urban County Government Code of Ordinances, known as "Ethics Act."

**Continued on next page**

7. Proposer acknowledges that "knowingly" for purposes of this Affidavit means, with respect to conduct or to circumstances described by a statute or ordinance defining an offense, that a person is aware or should have been aware that his conduct is of that nature or that the circumstance exists.

Further, Affiant sayeth naught.

Ron D. Gilkerson

STATE OF Ky

COUNTY OF Shelby

The foregoing instrument was subscribed, sworn to and acknowledged before me

by Ron D. Gilkerson on this the 25 day  
of March, 2013.

My Commission expires: July 6, 2014

Dwight D. Marshall  
NOTARY PUBLIC, STATE AT LARGE



## EQUAL OPPORTUNITY AGREEMENT

### The Law

- Title VII of the Civil Rights Act of 1964 (amended 1972) states that it is unlawful for an employer to discriminate in employment because of race, color, religion, sex, age (40-70 years) or national origin.
- Executive Order No. 11246 on Nondiscrimination under Federal contract prohibits employment discrimination by contractor and sub-contractor doing business with the Federal Government or recipients of Federal funds. This order was later amended by Executive Order No. 11375 to prohibit discrimination on the basis of sex.
- Section 503 of the Rehabilitation Act of 1973 states:

*The Contractor will not discriminate against any employee or applicant for employment because of physical or mental handicap.*

- Section 2012 of the Vietnam Era Veterans Readjustment Act of 1973 requires Affirmative Action on behalf of disabled veterans and veterans of the Vietnam Era by contractors having Federal contracts.
- Section 206(A) of Executive Order 12086, Consolidation of Contract Compliance Functions for Equal Employment Opportunity, states:

*The Secretary of Labor may investigate the employment practices of any Government contractor or sub-contractor to determine whether or not the contractual provisions specified in Section 202 of this order have been violated.*

\*\*\*\*\*

The Lexington-Fayette Urban County Government practices Equal Opportunity in recruiting, hiring and promoting. It is the Government's intent to affirmatively provide employment opportunities for those individuals who have previously not been allowed to enter into the mainstream of society. Because of its importance to the local Government, this policy carries the full endorsement of the Mayor, Commissioners, Directors and all supervisory personnel. In following this commitment to Equal Employment Opportunity and because the Government is the benefactor of the Federal funds, it is both against the Urban County Government policy and illegal for the Government to let contracts to companies which knowingly or unknowingly practice discrimination in their employment practices. Violation of the above mentioned ordinances may cause a contract to be canceled and the contractors may be declared ineligible for future consideration.

Please sign this statement in the appropriate space acknowledging that you have read and understand the provisions contained herein. Return this document as part of your application packet.

### Bidders

*I/We agree to comply with the Civil Rights Laws listed above that govern employment rights of minorities, women, Vietnam veterans, handicapped and aged persons.*



Signature

GRW Engineers, Inc.

Name of Business

Ron D. Gilkerson, PE, President



**WORKFORCE ANALYSIS FORM**

---

Name of Organization: **GRW Engineers, Inc. (dba as GRW)**

Date: **03 / 25 / 2014**

Categories	Total	White		Latino		Black		Other		Total	
		M	F	M	F	M	F	M	F	M	F
<b>Administrators</b>											
<b>Professionals</b>	128	109	19							109	19
<b>Superintendents</b>											
<b>Supervisors</b>											
<b>Foremen</b>											
<b>Technicians</b>	58	49	9							49	9
<b>Protective Service</b>											
<b>Para-Professionals</b>											
<b>Office/Clerical</b>	23		23								23
<b>Skilled Craft</b>	47	46	1							46	1
<b>Service/Maintenance</b>											
<b>Total:</b>	256	204	52							204	52

Prepared by: **Gayla P. Szak, PHR, Human Resources Manager**  
**Name & Title**

## LFUCG STATEMENT OF GOOD FAITH EFFORTS

Bid/RFP/Quote # 13-2014

By the signature below of an authorized company representative, we certify that we have utilized the following Good Faith Efforts to obtain the maximum participation by MWDBE business enterprises on the project and can supply the appropriate documentation.

\_\_\_\_\_ Advertised opportunities to participate in the contract in at least two (2) publications of general circulation media; trade and professional association publications; small and minority business or trade publications; and publications or trades targeting minority, women and disadvantaged businesses not less than fifteen (15) days prior to the deadline for submission of bids to allow MWDBE firms to participate.

\_\_\_\_\_ Included documentation of advertising in the above publications with the bidders good faith efforts package

\_\_\_\_\_ Attended LFUCG Central Purchasing Economic Inclusion Outreach event

  X   Attended pre-bid meetings that were scheduled by LFUCG to inform MWDBEs of subcontracting opportunities

\_\_\_\_\_ Sponsored Economic Inclusion event to provide networking opportunities for prime contractors and MWDBE firms

  X   Requested a list of MWDBE subcontractors or suppliers from LFUCG Economic Engine and showed evidence of contacting the companies on the list(s).

\_\_\_\_\_ Contacted organizations that work with MWDBE companies for assistance in finding certified MWDBE firms to work on this project. Those contacted and their responses should be a part of the bidder's good faith efforts documentation.

  X   Sent written notices, by certified mail, email or facsimile, to qualified, certified MWDBEs soliciting their participation in the contract not less than seven (7) days prior to the deadline for submission of bids to allow them to participate effectively.

  X   Followed up initial solicitations by contacting MWDBEs to determine their level of interest.

  X   Provided the interested MWDBE firm with adequate and timely information about the plans, specifications, and requirements of the contract.

  X   Selected portions of the work to be performed by MWDBE firms in order to increase the likelihood of meeting the contract goals. This includes, where appropriate, breaking out contract work items into economically feasible

units to facilitate MWDBE participation, even when the prime contractor may otherwise perform these work items with its own workforce

\_\_\_\_\_ Negotiated in good faith with interested MWDBE firms not rejecting them as unqualified without sound reasons based on a thorough investigation of their capabilities. Any rejection should be so noted in writing with a description as to why an agreement could not be reached.

\_\_\_\_\_ Included documentation of quotations received from interested MWDBE firms which were not used due to uncompetitive pricing or were rejected as unacceptable and/or copies of responses from firms indicating that they would not be submitting a bid.

\_\_\_\_\_ Bidder has to submit sound reasons why the quotations were considered unacceptable. The fact that the bidder has the ability and/or desire to perform the contract work with its own forces will not be considered a sound reason for rejecting a MWDBE quote. Nothing in this provision shall be construed to require the bidder to accept unreasonable quotes in order to satisfy MWDBE goals.

\_\_\_\_\_ Made an effort to offer assistance to or refer interested MWDBE firms to obtain the necessary equipment, supplies, materials, insurance and/or bonding to satisfy the work requirements of the bid proposal


\_\_\_\_\_ Made efforts to expand the search for MWBE firms beyond the usual geographic boundaries.

\_\_\_\_\_ Other - any other evidence that the bidder submits which may show that the bidder has made reasonable good faith efforts to include MWDBE participation.

Failure to submit any of the documentation requested in this section may be cause for rejection of bid. Bidders may include any other documentation deemed relevant to this requirement. Documentation of Good Faith Efforts are to be submitted with the Bid, if the participation Goal is not met.

The undersigned acknowledges that all information is accurate. Any misrepresentations may result in termination of the contract and/or be subject to applicable Federal and State laws concerning false statements and claims.

GRW  
**Company**

Ron D. Gilkerson, PE   
**Company Representative**

March 25, 2014  
**Date**

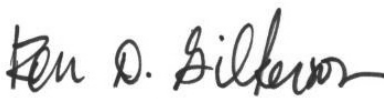
President  
**Title**


**AFFIRMATIVE ACTION PLAN**  
**INDIVIDUALS WITH DISABILITIES**  
**AND**  
**COVERED VETERANS & DISABLED VETERANS**

**GRW ENGINEERS**  
**801 CORPORATE DRIVE**  
**LEXINGTON, KY 40503**

**Revised and Updated Annually**

**February 1, 2014 – January 31, 2015**

Approved by:   
\_\_\_\_\_  
Ron D. Gilkerson  
President

Approved by:   
\_\_\_\_\_  
Gayla P. Szak  
Human Resources  
Equal Employment Opportunity Officer  
Phone Number: 859-223-3999

# **TABLE OF CONTENTS**

## **SECTION I**

### **INDIVIDUALS WITH DISABILITIES**

**Confidentiality Statement**

**Statement of Purpose**

**Affirmative Action Policy**

**Affirmative Action Plan Coverage**

**Communication of Policy**

**Recruitment**

**Compensation**

**Policy of Nondiscrimination**

**Proper Consideration of Qualifications**

**Accommodation of Physical and Mental Limitations of Employees**

**Development and Execution of Affirmative Action Programs**

## **Confidentiality Statement**

This Affirmative Action Plan contains confidential information subject to the provisions of Title 18 U.S.C. §1905.

GRW Engineers does not consent to the release of any confidential information whatsoever contained in the Affirmative Action Plan under the Freedom of Information Act or otherwise. If the Government, or any agency or division thereof, is considering a request for release of this Program under the Freedom of Information Act, we hereby request that the Government immediately notify GRW Engineers of any and all Freedom of Information Act requests and any contemplated release of this Plan by the Government.

The Company further requests that everyone who has any contact with this Affirmative Action Plan, or its supporting appendices, documents, and other data, treat such information as totally confidential and that such information not be released to any person whatsoever.

## **Statement of Purpose**

This plan is written with the intention of meeting the requirements of a contractor's obligations with Section 503 of the Rehabilitation Act of 1973, as amended.

This plan is presented in recognition of the rights of employees and applicants for employment to be treated on a nondiscriminatory basis. The Company recognizes its obligation to take affirmative action to employ and advance qualified disabled individuals. The Company's purpose in adopting this Affirmative Action Plan is to utilize persons with disabilities to their full potential in all levels of the organization.

## **Affirmative Action Policy**

It is the policy of GRW Engineers not to discriminate against any employee or applicant for employment because he or she has a physical or mental disability in regard to any position for which the employee or applicant for employment is qualified. The Company agrees to take affirmative action to employ, advance in employment, and otherwise treat qualified individuals without discrimination based upon their physical or mental disability in all employment practices including the following: employment, promotion, termination, compensation, demotion or transfer, recruiting, advertising, layoff or termination, and selection for training. In carrying out this Affirmative Action Program, the Company will make a good faith effort to reasonably accommodate the physical or mental limitations of any employee or applicant for employment unless such accommodation would impose undue hardship on the conduct of the business.

An "individual with disabilities" is defined to be a person who:

- Has a physical or mental impairment which substantially limits one or more of his or her major life activities,

- Has a record of such impairment, or
- Is regarded as having such impairment.

For purposes of this definition, an individual with disabilities is substantially limited if he or she is likely to experience difficulty in securing, retaining, or advancing employment because of a disability.

The terms "handicapped" and "disabled" are intended to have the same meaning within this Plan.

The Equal Employment Opportunity Officer has the ultimate responsibility for ensuring that equal employment opportunity and affirmative action receive the high level of priority due this activity.

To carry out the letter as well as the spirit of our Equal Employment Opportunity / Affirmative Action Program, the Company has appointed Gayla P. Szak as the Equal Employment Opportunity Officer. She will spearhead the commitment to maximize equal employment opportunity and affirmative action at GRW Engineers. The EEO Officer has the full support of the President in carrying out these duties.

Specifically, the EEO Officer is responsible for ensuring that the following activities are carried out:

- Keeping management up-to-date concerning new developments in the EEO field.
- Providing technical assistance in response to questions and concerns of employees and supervisors, and, as needed, acting as liaison with appropriate agencies.
- Coordinating investigations and making recommendations concerning any allegations of discrimination both internally and in connection with enforcement agencies.
- Conducting periodic audits and holding regular discussions with supervisors and managers to ensure that company policy is implemented.
- Encouraging involvement with organizations and community action groups.
- Assisting in the identification of problem areas through review of policies and procedures and conducting periodic utilization studies.
- Reporting periodically to the Senior Official on the affirmative action effort.
- Developing education programs to provide managers and supervisors with pertinent equal employment opportunity information to assist them in their compliance efforts.

It is further the policy of the Company that employees and applicants shall not be subjected to harassment, intimidation, threats, coercion or discrimination because they have engaged in, or may engage, in any of the following activities:

- Filing a complaint;
- Assisting or participating in an investigation, compliance review, hearing, or any other activity related to the administration of Section 503 of the Rehabilitation Act of 1973, as amended (Section 503) or any other Federal, State or local law requiring equal opportunity for disabled persons;
- Opposing any act or practice made unlawful by Section 503 or its implementing regulations in this part or any other Federal, State or local law requiring equal opportunity for disabled persons; or
- Exercising any other right protected by Section 503 or its implementing regulations in this part.

Consistent with GRW Engineers' non-discrimination policy, harassment in the workplace in any form is not tolerated. Harassment of any kind, including sexual harassment, whether physical, verbal, visual or written, is strictly prohibited. Improper interference with the ability of GRW Engineers' employees to perform their expected job duties is not tolerated. Examples of unlawful employee harassment include jokes, slurs, sexually explicit or racially derogatory material, in addition to commentary that would offend others on the basis of race, color, religion, sex, national origin, disability, age, marital status, citizen status, sexual orientation, genetics, status as a disabled veteran or veteran of the wars, including Vietnam, or any other non-job-related protected characteristic or feature. Furthermore, the use of the Company's internet or e-mail system for the purposes of displaying or transmitting offensive material is strictly prohibited.

Sexual harassment may also include unwelcome sexual advances, offensive touching, requests for sexual favors, showing sexually suggestive or explicit photos or objects, and all other conduct of a sexual or otherwise offensive nature, especially when:

- Submission to or rejection of such conduct is used as a factor in employment decisions (e.g. hiring, evaluation, promotion) affecting such individual; or
- Such conduct has the purpose or effect of interfering unreasonably with an individual's employment or creating an intimidating, hostile, or offensive working environment.

Employees who violate this policy are subject to disciplinary action up to and including immediate termination from employment with GRW Engineers.



Employees who believe that they are being harassed or discriminated against in any manner prohibited by this policy are encouraged to bring the matter directly to the attention of a member of management or the Human Resources Department. Management must immediately report any discrimination/harassment complaint or observation to the Human Resources Department.

The Company will conduct an investigation of any complaint of inappropriate discrimination or harassment, and will take prompt remedial action where necessary. Confidentiality will be maintained throughout the investigation to the extent practical and appropriate under the circumstances.

The Company will not retaliate against employees who make complaints or participate in investigations about workplace harassment or other discrimination. Retaliation is a form of discrimination and is strictly prohibited.

### **Affirmative Action Plan Coverage**

Applicants and employees who believe themselves covered under this Affirmative Action Program for disabled individuals may advise the Company at any time that they wish to benefit under this program.

This information will be used solely for the purpose of affirmative action and proper job placement. This information will not be used to exclude or otherwise limit the employment opportunities of qualified disabled individuals.

The Equal Employment Opportunity Officer is responsible for implementation of the EEO policy within the Company. Gayla P. Szak has been assigned the day-to-day responsibility for implementing the policy regarding individuals with disabilities. She has management's support to carry out the following responsibilities:

- Developing policy statements, Affirmative Action Programs, and internal and external communication techniques.
- Discussing with managers, supervisors, and employees the policy regarding individuals with disabilities to make certain that it is being followed.
- Advising managers and supervisors that they are obligated to prevent harassment of employees placed through affirmative action efforts and that their work performance is being evaluated on the basis of their affirmative action efforts and results, as well as on other criteria.

- Assisting in the identification of problem areas in the implementation of Affirmative Action Programs for individuals with disabilities and in the development of solutions, paying particular attention to the accommodation requirements.
- Designing and implementing an audit and reporting system that will measure the effectiveness of the Company's program, determining the degree to which objectives have been accomplished, and indicating the need for remedial action.
- Determining whether employees with a known disability have had an opportunity to participate in Company-sponsored activities.
- Serving as a liaison between GRW Engineers and responsible organizations concerned with employment opportunities for individuals with disabilities.
- Serving as a liaison between GRW Engineers and enforcement agencies.

### **Communication of Policy**

The Company takes the following steps to disseminate information on the Company's policy on employment of disabled individuals to recruiting sources, applicants, supervisory and management personnel, and other employees:

- The Company's policy is contained in the Policy & Procedure Manual and distributed to all employees.
- The EEO Officer holds periodic meetings with management and supervisory personnel to discuss the Company's policy.
- Prospective employees are informed of the Company's commitment to increase employment opportunities for qualified individuals with disabilities.
- Employees are made aware of the Company's policy through a written policy statement posted throughout the Company's facilities.
- The Company has informed recruiting sources of this policy.
- Written notification of the Company's policy of affirmative action to increase employment opportunities for qualified individuals with disabilities is sent to subcontractors, vendors, and suppliers, requesting appropriate action on their part.

## **Recruitment**

The State Employment Service will be informed of the Company's policy of nondiscrimination and affirmative action.

Personnel involved in the recruitment, screening, selection, promotion, disciplinary, and related employment processes are aware of the Company's commitment to affirmative action.

GRW Engineers recruits applicants for employment on the basis of their demonstrated abilities and competence.

This policy is discussed in employee orientation and management meetings.

## **Compensation**

When offering employment or promotions to an individual with disabilities, the Company will not consider disability income, pension income, or other benefits received by the applicant or employee as relevant to determination of his/her salary. No deductions from Company pay will be made for any other income of that nature.

## **Policy of Nondiscrimination**

The Company does not discriminate against any applicant or employee because of physical or mental disability provided that the applicant or employee is qualified for the position. The Company's commitment to equal employment opportunity includes, but is not limited to the following areas: hiring, upgrading, transfer, recruitment or recruitment advertising, layoff or termination, all forms of compensation, selection for training, education or tuition assistance, seniority, and leaves of absence.

The Company will ensure that the physical and mental job qualification requirements are related to the specific job or jobs for which the person is being considered and are consistent with business necessity and safe performance of the job.

## **Proper Consideration of Qualifications**

All applicants applying for employment with the company are invited to voluntarily identify themselves as disabled and indicate any reasonable accommodation that can be made to enable them to perform a job that they would not otherwise be able to do.

If a disabled applicant or employee is not selected for employment, promotion, or training, the reason for the non-selection is documented and maintained in the personnel file or with the application.

Whenever an accommodation is made for the hire, promotion, or training of a disabled individual, a description of the accommodation is documented and kept with the personnel file or with the application.

### **Accommodation of Physical and Mental Limitations of Employees**

GRW Engineers will try to reasonably accommodate the physical and mental limitations of qualified, disabled applicants or employees so as to ensure that each one is afforded equal opportunity for employment and advancement. In determining the degree of accommodations that may be reasonably undertaken, business necessity and expenses will be considered with such other related factors as: efficiency, health and safety, the essential functions of each specific job, etc. Each decision regarding accommodations will be determined on an individual basis.

The Company will consider the following types of accommodation:

- Architectural Modifications: curb accessibility, entrance door accessibility, ramps, distance from parking lot to building entrance, restroom facilities which accommodate wheelchairs.
- Work Environment Modifications: lowered or raised work surfaces, special lighting, rearranged shelves, and hand-free phones.
- Job Task Modifications: sequencing changes, functional arrangements.
- Equipment Modifications: telephone equipped with amplifiers, altered controls to accommodate left or right hand or foot operation.

### **Development and Execution of Affirmative Action Programs**

The Company is committed to developing, executing, and maintaining an effective Affirmative Action Plan. In order to ensure this result, the Company will use the following procedures:

- The Affirmative Action Plan for individuals with disabilities is made available to current and prospective employees.
- The total selection process including training and promotion is reviewed on an on-going basis to ensure freedom from bias regarding individuals with disabilities that limit their access to all jobs for which they are qualified.
- Approved position specifications are made available to all members of management involved in the recruiting, screening, selection, and promotion process. Pertinent information is also distributed to all recruiting sources.

- All employees significantly involved in recruitment, selection, promotion, disciplinary and related personnel practices are carefully selected and trained to ensure that the commitments in the Affirmative Action Plan are implemented.
- State Employment Services and other recruiting sources are encouraged to refer qualified individuals with disabilities.
- Include the affirmative action clause in covered government contracts and subcontracts.

# **TABLE OF CONTENTS**

## **SECTION II**

### **COVERED VETERANS & DISABLED VETERANS**

**Confidentiality Statement**

**Statement of Purpose**

**Affirmative Action Policy**

**Affirmative Action Plan Coverage**

**Communication of Policy**

**Recruitment**

**Compensation**

**Policy of Nondiscrimination**

**Proper Consideration of Qualifications**

**Accommodation of Physical and Mental Limitations of Employees**

**Development and Execution of Affirmative Action Programs**

## **Confidentiality Statement**

This Affirmative Action Plan contains confidential information that is subject to the provisions of Title 18 U.S.C. §1905.

GRW Engineers does not consent to the release of any confidential information whatsoever contained in the Affirmative Action Plan under the Freedom of Information Act or otherwise. If the Government, or any agency or division thereof, is considering a request for release of this Program under the Freedom of Information Act, we hereby request that the Government immediately notify GRW Engineers of any and all Freedom of Information Act requests and any contemplated release of this Plan by the Government.

The Company further requests that everyone who has any contact with this Affirmative Action Plan, or its supporting appendices, documents, and other data, treat such information as totally confidential and that such information not be released to any person whatsoever.

## **Statement of Purpose**

This plan is written with the intention of meeting the requirements of a contractor's obligations with Section 402, Vietnam Era Veterans Readjustment Act of 1974, as amended.

The plan is presented in recognition of the rights of employees and applicants for employment to be treated on a nondiscriminatory basis. The Company recognizes its obligation to take affirmative action to employ and advance qualified Covered Veterans and Disabled Veterans. The purpose in adopting this Affirmative Action Plan is to utilize Covered Veterans and Disabled Veterans to their full potential in all levels of the organization.

## **Affirmative Action Policy**

It is the policy of the Company not to discriminate against any employee or applicant for employment because he or she is a Covered Veterans and Disabled Veterans in regard to any position for which the employee or applicant for employment is qualified. The Company agrees to take affirmative action to employ, advance in employment, and otherwise treat qualified individuals without discrimination based upon their disability or veteran's status in all employment practices including the following: employment, promotion, termination, compensation, demotion or transfer, recruiting, advertising, layoff or termination, and selection for training. In carrying out this Affirmative Action Program, GRW Engineers will make a good faith effort to reasonably accommodate the physical or mental limitations of any employee or applicant for employment unless such accommodation would impose undue hardship on the conduct of the business.

## **Affirmative Action Plan Coverage**

Applicants and employees who believe themselves covered under this Affirmative Action Program for Covered Veterans and Disabled Veterans may advise the Company at any time that they wish to benefit under this program.

This information will be used solely for the purpose of affirmative action and proper job placement. This information will not be used to exclude or otherwise limit the employment opportunities of qualified Covered Veterans and Disabled Veterans.

The Equal Employment Opportunity Officer is responsible for implementation of the EEO policy within the Company. Gayla P. Szak has been assigned the day-to-day responsibility for implementing the policy regarding Covered Veterans and Disabled Veterans. She has management's support to carry out the following responsibilities:

- Developing policy statements, Affirmative Action Programs, and internal and external communications regarding affirmative action for these protected classes.
- Discussing with managers, supervisors, and employees the policy regarding Covered Veterans and Disabled Veterans to make certain that it is being followed.
- Advising managers and supervisors that they are obligated to prevent harassment of employees placed through affirmative action efforts and that their work performance is being evaluated on the basis of their affirmative action efforts and results, as well as on other criteria.
- Assisting in the identification of problem areas in the implementation of Affirmative Action Programs for Covered Veterans and Disabled Veterans, and the development of solutions, paying particular attention to the accommodation requirements.
- Designing and implementing an audit and reporting system that will:
  - Measure the effectiveness of the Company's program and determine the degree to which objectives have been accomplished.
  - Indicate the need for remedial action.
- Determining whether known Covered Veterans and Disabled Veterans have had an opportunity to participate in the Company-sponsored activities.
- Serving as liaison between GRW Engineers and responsible organizations concerned with employment opportunities for Covered Veterans and Disabled Veterans.
- Serving as liaison between GRW Engineers and enforcement agencies.



## **Communication of Policy**

The Company takes the following steps to disseminate information on the Company's policy on employment of Covered Veterans and Disabled Veterans to recruiting sources, vendors, subcontractors, applicants, supervisory and management personnel, and other employees:

- The Company's policy is contained in the Policy & Procedure Manual and is distributed to all employees.
- The EEO Officer holds periodic meetings with all management and supervisory personnel to discuss the Company's policy.
- Employees are made aware of the Company's policy through a written policy statement posted throughout the Company's facilities.
- Bulletin boards bear the appropriate federal and state EEO posters.
- Recruitment sources are informed of the Company's Equal Employment Opportunity Policy and are requested to recruit and refer in a manner that represents the Company's policy.
- An Equal Employment Opportunity clause is included in all purchase orders.

## **Recruitment**

When hiring opportunities occur, GRW Engineers requests that employment agencies and other sources refer qualified Covered Veterans and Disabled Veterans for consideration.

Recruiting sources have been informed of the Company's policy of nondiscrimination and affirmative action.

Personnel involved in the recruitment, screening, selection, promotion, disciplinary, and related employment processes are aware of the Company's commitment to affirmative action.

The Company recruits applicants for employment on the basis of demonstrated ability and competence.

Sources likely to yield qualified Covered Veterans and Disabled Veterans as applicants are identified and included in our recruiting efforts. All open positions are posted with the local State Employment Services office except executive and top management positions, positions that will be filled from within the Company, and positions lasting three (3) days or less.

The policy is discussed in employee orientation and management meetings.

## **Compensation**

When offering employment or promotions to Covered Veterans and Disabled Veterans, the Company will not consider disability income, pension income, or other benefits received by the applicant or employee as relevant to determination of his/her salary. No deduction from Company pay will be made for any other income of that nature.

## **Policy of Nondiscrimination**

The Company does not discriminate against any applicant or employee because of disability or veteran status, provided the applicant or employee is qualified for the position. The Company's commitment to equal employment opportunity includes, but is not limited to, the following areas: hiring, upgrading, transfer, recruitment or recruitment advertising, layoff or termination, all forms of compensation, selection for training, education or tuition assistance, seniority, and leaves of absence.

GRW Engineers will ensure the physical and mental job qualification requirements are related to the specific job or jobs for which the person is being considered and are consistent with business necessity and safe performance of the job.

## **Proper Consideration of Qualifications**

All applicants applying for employment with the Company will be invited to voluntarily identify themselves as Covered Veterans and Disabled Veterans and to indicate any reasonable accommodation that can be made to enable them to perform a job that they would not otherwise be able to do.

Whenever Covered Veterans and Disabled Veterans are considered for employment, the employment applications are annotated to identify positions for which they are considered.

If a Covered Veterans and Disabled Veterans is not selected for employment, promotion, or training, the reason for the non-selection is documented and maintained in the personnel file or with the application.

Whenever an accommodation is made for the hire, promotion, or training of a disabled individual, a description of the accommodation is documented and kept with the personnel file or with the application.

## **Accommodation of Physical and Mental Limitations of Employees**

GRW Engineers is prepared to make reasonable accommodations to the physical and mental limitations of a disabled veteran unless such accommodation would impose an undue hardship on the conduct of our business. The extent to which accommodations will be made will be a function of several factors including business necessity and cost.

## **Development and Execution of Affirmative Action Programs**

The Company is committed to developing, executing, and maintaining an effective Affirmative Action Plan. To ensure this result, the Company uses the following procedures:

- The Affirmative Action Plan for Covered Veterans and Disabled Veterans is made available to current and prospective employees. They are invited to declare their veteran's status and their desire to be covered under the provisions of the plan.
- The total selection process is reviewed on an on-going basis to ensure freedom from bias regarding Covered Veterans and Disabled Veterans which might otherwise limit their access to all jobs for which they are qualified.
- Approved position specifications are made available to all members of management involved in the recruiting, screening, selection, and promotion process. Pertinent information is also distributed to all recruiting sources.
- All employees significantly involved in recruitment, selection, promotion, disciplinary, and related personnel practices will be carefully selected and trained to ensure that the commitments in the Affirmative Action Plan are implemented.
- State Employment Services and other recruiting sources are encouraged to refer qualified Covered Veterans and Disabled Veterans.
- The affirmative action clause is included in covered government contracts and sub-contracts.

GRW Engineers will meet its annual obligation to file a VETS-100 reporting form showing the number of veterans in our workforce.



# CERTIFICATE OF LIABILITY INSURANCE

DATE (MM/DD/YYYY)  
03/04/2014

**THIS CERTIFICATE IS ISSUED AS A MATTER OF INFORMATION ONLY AND CONFERS NO RIGHTS UPON THE CERTIFICATE HOLDER. THIS CERTIFICATE DOES NOT AFFIRMATIVELY OR NEGATIVELY AMEND, EXTEND OR ALTER THE COVERAGE AFFORDED BY THE POLICIES BELOW. THIS CERTIFICATE OF INSURANCE DOES NOT CONSTITUTE A CONTRACT BETWEEN THE ISSUING INSURER(S), AUTHORIZED REPRESENTATIVE OR PRODUCER, AND THE CERTIFICATE HOLDER.**

**IMPORTANT: If the certificate holder is an ADDITIONAL INSURED, the policy(ies) must be endorsed. If SUBROGATION IS WAIVED, subject to the terms and conditions of the policy, certain policies may require an endorsement. A statement on this certificate does not confer rights to the certificate holder in lieu of such endorsement(s).**

<b>PRODUCER</b>  The Underwriters Group, Inc. 1700 Eastpoint Parkway P.O. Box 23790 Louisville, KY 40223	<b>CONTACT NAME:</b> PHONE (A/C, No, Ext): 502-244-1343      FAX (A/C, No): 502-244-1411 E-MAIL ADDRESS:														
<b>INSURED</b>  GRW Engineers Inc.  801 Corporate Drive Lexington, KY 40503	<table border="1" style="width: 100%; border-collapse: collapse;"> <thead> <tr> <th style="text-align: center;">INSURER(S) AFFORDING COVERAGE</th> <th style="text-align: center;">NAIC #</th> </tr> </thead> <tbody> <tr> <td>INSURER A: Charter Oak Fire Insurance Company</td> <td style="text-align: center;">25615</td> </tr> <tr> <td>INSURER B: Travelers Indemnity Company</td> <td style="text-align: center;">25658</td> </tr> <tr> <td>INSURER C: Cincinnati Insurance Company</td> <td style="text-align: center;">10677</td> </tr> <tr> <td>INSURER D: Travelers Casualty Insurance Co of Amer</td> <td style="text-align: center;">19046</td> </tr> <tr> <td>INSURER E: XL Specialty Insurance Company</td> <td style="text-align: center;">37885</td> </tr> <tr> <td>INSURER F: Kentucky Employers' Mutual Insurance</td> <td style="text-align: center;">10320</td> </tr> </tbody> </table>	INSURER(S) AFFORDING COVERAGE	NAIC #	INSURER A: Charter Oak Fire Insurance Company	25615	INSURER B: Travelers Indemnity Company	25658	INSURER C: Cincinnati Insurance Company	10677	INSURER D: Travelers Casualty Insurance Co of Amer	19046	INSURER E: XL Specialty Insurance Company	37885	INSURER F: Kentucky Employers' Mutual Insurance	10320
INSURER(S) AFFORDING COVERAGE	NAIC #														
INSURER A: Charter Oak Fire Insurance Company	25615														
INSURER B: Travelers Indemnity Company	25658														
INSURER C: Cincinnati Insurance Company	10677														
INSURER D: Travelers Casualty Insurance Co of Amer	19046														
INSURER E: XL Specialty Insurance Company	37885														
INSURER F: Kentucky Employers' Mutual Insurance	10320														

**COVERAGES**                                      **CERTIFICATE NUMBER:**                                      **REVISION NUMBER:**

THIS IS TO CERTIFY THAT THE POLICIES OF INSURANCE LISTED BELOW HAVE BEEN ISSUED TO THE INSURED NAMED ABOVE FOR THE POLICY PERIOD INDICATED. NOTWITHSTANDING ANY REQUIREMENT, TERM OR CONDITION OF ANY CONTRACT OR OTHER DOCUMENT WITH RESPECT TO WHICH THIS CERTIFICATION MAY BE ISSUED OR MAY PERTAIN, THE INSURANCE AFFORDED BY THE POLICIES DESCRIBED HEREIN IS SUBJECT TO ALL THE TERMS, EXCLUSIONS AND CONDITIONS OF SUCH POLICIES. LIMITS SHOWN MAY HAVE BEEN REDUCED BY PAID CLAIMS.

INSR LTR	TYPE OF INSURANCE	ADDL INSR	SUBR WVD	POLICY NUMBER	POLICY EFF (MM/DD/YYYY)	POLICY EXP (MM/DD/YYYY)	LIMITS	
A	GENERAL LIABILITY			6808803L858COF14	03/01/2014	03/01/2015	EACH OCCURRENCE	\$1,000,000
	<input checked="" type="checkbox"/> COMMERCIAL GENERAL LIABILITY						DAMAGE TO RENTED PREMISES (Ea occurrence)	\$1,000,000
	<input type="checkbox"/> CLAIMS-MADE <input checked="" type="checkbox"/> OCCUR						MED EXP (Any one person)	\$10,000
							PERSONAL & ADV INJURY	\$1,000,000
							GENERAL AGGREGATE	\$2,000,000
GEN'L AGGREGATE LIMIT APPLIES PER:							PRODUCTS - COM/OP AGG	\$2,000,000
	<input type="checkbox"/> POLICY <input type="checkbox"/> PROJECT <input type="checkbox"/> LOC						\$	
B	AUTOMOBILE LIABILITY			BA8805L391TIA14	03/01/2014	03/01/2015	COMBINED SINGLE LIMIT (Ea accident)	\$1,000,000
	<input checked="" type="checkbox"/> ANY AUTO						BODILY INJURY (Per person)	\$
	<input checked="" type="checkbox"/> ALL OWNED AUTOS	<input type="checkbox"/> SCHEDULED AUTOS					BODILY INJURY (Per accident)	\$
	<input checked="" type="checkbox"/> HIRED AUTOS	<input checked="" type="checkbox"/> NON-OWNED AUTOS					PROPERTY DAMAGE (Per accident)	\$
							\$	
B C	<input checked="" type="checkbox"/> UMBRELLA LIAB	<input checked="" type="checkbox"/> OCCUR		CUP3458T0031447	03/01/2014	03/01/2015	EACH OCCURRENCE	\$5,000,000
	<input checked="" type="checkbox"/> EXCESS LIAB	<input type="checkbox"/> CLAIMS-MADE		EXS0065793	03/01/2014	03/01/2015	AGGREGATE	\$5,000,000
	<input type="checkbox"/> DED	<input checked="" type="checkbox"/> RETENTION \$10,000					C-Occ/Aggregate	\$5,000,000
D F	WORKERS COMPENSATION AND EMPLOYERS' LIABILITY			VMP5UB6127Y97A14	03/01/2014	03/01/2015	<input checked="" type="checkbox"/> WC STATUTORY LIMITS	
	ANY PROPRIETOR/PARTNER/EXECUTIVE OFFICER/MEMBER EXCLUDED? (Mandatory in NH)	<input type="checkbox"/> Y <input type="checkbox"/> N	N/A	361580 (KY only)	03/01/2014	03/01/2015	<input type="checkbox"/> OTHER	
	If yes, describe under DESCRIPTION OF OPERATIONS below						E.L. EACH ACCIDENT	\$1,000,000
							E.L. DISEASE - EA EMPLOYEE	\$1,000,000
							E.L. DISEASE - POLICY LIMIT	\$1,000,000
E	Professional Liability			DPR9710739	03/01/2014	03/01/2015	Each Claim	5,000,000
							Aggregate	5,000,000

**DESCRIPTION OF OPERATIONS / LOCATIONS / VEHICLES (Attach ACORD 101, Additional Remarks Schedule, if more space is required)**

Projects: All Work Performed  
 General Liability: Certificate Holder, its elected & appointed Officials, Employees, Agents, Boards, Consultants, Assigns, Volunteers and Successors in interest are included as Additional Insureds.  
 Note: Requirements for Environmental and Pollution Liability: Environmental Liability is basically a contractor designed coverage rather than for consulting architects and engineers. The professional liability policy does not exclude pollution incidents that arise out of the scope of professional services. (Per Mr. Tom Sweeney, Claims Manager, Dept. of Law, LFUCG, this is acceptable.)

**CERTIFICATE HOLDER**                                      **CANCELLATION**

Lexington Fayette Urban County Government/  
 Division of Risk Management  
 200 East Main Street, 9th Floor  
  
 Lexington, KY 40507

**SHOULD ANY OF THE ABOVE DESCRIBED POLICIES BE CANCELLED BEFORE THE EXPIRATION DATE THEREOF, NOTICE WILL BE DELIVERED IN ACCORDANCE WITH THE POLICY PROVISIONS.**

AUTHORIZED REPRESENTATIVE