



Qualifications for  
Professional Services for

RFP #20-2022

# Cardinal Run Park North – New Community Park

City of Lexington, Kentucky

April 19, 2022





**BRANDSTETTER  
CARROLL INC**  
ARCHITECTS . ENGINEERS . PLANNERS

April 19, 2022

2360 Chauvin Dr  
**LEXINGTON**  
KY 40517  
859.268.1933  
FX: 859.268.3341

255 Seven Farms  
Drive, Suite 300-A  
**CHARLESTON**  
SC 29492

17300 Preston Rd  
Suite 310  
**DALLAS**  
TX 75252  
469.941.4926

308 East 8<sup>th</sup> St  
**CINCINNATI**  
OH 45202  
513.651.4224  
FX: 513.651.0147

1220 West 6<sup>th</sup> St  
Suite 300  
**CLEVELAND**  
OH 44113  
216.241.4480

Director, Division of Central Purchasing  
Lexington-Fayette Urban County Government  
200 East Main Street, 3<sup>rd</sup> Floor  
Lexington, Kentucky 40507

RE: RFP #20-2022 Professional Design Services for Cardinal Run Park North-New  
Community Park

Dear Selection Committee:

BCI is very pleased to submit this proposal to implement one of the key recommendations of the **Lexington Parks and Recreation Master Plan** which our staff prepared working closely with the Division of Parks and Recreation. It is encouraging to see the LFUCG implementing this and several other recommendations of the Master Plan that was based on extensive citizen engagement.

I have a very personal interest in Cardinal Run Park, both South and North, as I regularly walk my dog from Harrods Hill Park, through Beaumont Reserve, and to Cardinal Run Park South.

BCI has had a Division of the Firm specifically focused on high-quality park planning and design since 1989. This focus has allowed this portion of our practice to expand markets throughout Kentucky, Ohio, and into several other states as well. This brings a nationwide perspective to our completely Lexington-based team.

This document provides an overview of the firm and its park and recreation capabilities in Section I. Section II provides resumes of key staff to illustrate the expertise, while Section III provides examples of projects with similar characteristics. Finally, Section IV provides a Scope of Service and Fee for the project.

This document clearly illustrates that BCI is more than qualified to meet the needs of the growing Lexington community and its park and recreation needs.

We look forward to meeting to kick off the project soon. Our team is excited to begin and committed to assist Lexington leadership to "*Enhance Community and Quality of Life*" for its residents. Please call or email if you have any questions (phone: 859.268.1933 or email: phoagland@bciaep.com).

Sincerely,

Patrick D. Hoagland, ASLA  
Division Leader – Recreation, Parks & Landscape Architecture  
Vice-President, Owner

## **TABLE OF CONTENTS**

**SECTION I.**  
FIRM OVERVIEW & CAPABILITIES

**SECTION II.**  
KEY STAFF

**SECTION III.**  
SIMILAR PROJECTS

**SECTION IV.**  
SCOPE OF SERVICES & FEE

**SECTION V.**  
FORMS

*We Enhance  
Community and  
Quality of Life*



## SECTION I. FIRM OVERVIEW & CAPABILITIES

# FIRM OVERVIEW



**“We Enhance  
Community and  
Quality of Life”**

Brandstetter Carroll Inc. (BCI) is a firm of Architects, Engineers, Landscape Architects, and Planners founded in 1979 with the express purpose of providing professional design services to public sector clients. Since the firm's inception, BCI has grown to include a staff of more than 60 and maintains offices in Lexington, Cincinnati, Cleveland, Dallas, and Charleston. The firm's in-house services include architecture, civil engineering, transportation engineering, landscape architecture, park and recreation system planning, interior design, construction administration, and resident inspection.

The firm has a depth of experience in virtually all areas of public construction and infrastructure. Initially, BCI worked almost exclusively with parks and recreation, ardently finding funding for projects through LWCF and CDBG funding. As that practice grew, the dream of opening a Division for park planning and design became a reality. In 1989, BCI recruited Patrick D. Hoagland, ASLA, to become Division Principal, charged with growing this expertise. In the ensuing 30 years, he has developed a staff that includes planning, design, and engineering. He has become recognized nationally in the field of Park System Planning and Citizen Engagement, all the while completing more than 300 park design assignments. Mr. Hoagland has designed hundreds of parks in Kentucky, Ohio, and other states.

## ARCHITECTURE

- Libraries
- Public Safety Buildings
- Courthouses
- Public Administration
- Recreation Centers
- Higher Education
- Interior Design

## RECREATION & LANDSCAPE

### ARCHITECTURE

- Park Design
- System Planning
- Master Plans
- Aquatic Facility Design
- Nature Centers & Camps
- Sports Complexes
- Feasibility Studies
- Trail Planning & Design

## ENGINEERING

- Roadway Design
- Traffic Planning
- Sewer and Water Systems
- Aviation Engineering
- Streetscape Design
- Site Development

## Locations:

2360 Chauvin Drive Lexington, KY 40517 859.268.1933 (Phone) 859.268.3341 (Fax)	308 East 8th Street Cincinnati, OH 45202 513.651.4224 (Phone) 513.651.0147 (Fax)	1220 West 6 <sup>th</sup> Street Ste 300 Cleveland, OH 44113 216.241.4480 (Phone)	17300 Preston Road Ste 310 Dallas, TX 75252 469.941.4926 (Phone)	255 Seven Farms Drive 300-A Charleston, SC 29492 859.268.1933 (Phone)
---	---	--	---	--

## UNIQUE CAPABILITIES OF THE BCI TEAM

BCI has taken leading roles in the development of parks, recreation centers, aquatics, park facilities, senior facilities, trail systems, and facilities for special populations. BCI established its Recreation, Planning, and Landscape Architecture Division in Lexington in 1989 to focus on high-quality park and recreation planning and design. This Division also supports the park planning and design in the other four BCI offices. This Lexington-based experience and nationwide market provides the BCI Team with the local knowledge of Lexington Parks as well as the trends being implemented around the USA.

With this vast experience, the BCI Team does not just prepare capital facilities plan but also understands all aspects of the delivery of a strong park, recreation, trail, program, and greenway system. The BCI Team feels strongly a successful plan provides clients with the knowledge and backup to not just build outstanding facilities, but have the resources to operate, maintain, and program the facilities and parks to better meet the needs of the residents of Lexington. This background and a national market allow our Staff to understand the trends impacting communities across the country and in the region. Our cost estimates are based upon dozens of recent projects, providing for greater accuracy. The Team will provide guidance on programming, staffing, management, marketing, and funding the new park. BCI is incorporated and headquartered in Lexington, Kentucky.

## FIRM LEADERSHIP AND OWNERSHIP

Benjamin E. Brandstetter, P.E., LEED GA	President/Owner
Lawrence W. Brandstetter, AIA	Chairman/Founder
Michael E. Carroll, AIA	Founder
Bruce G. Brandstetter, P.E.	Principal
Monica G. Sumner, AIA	Executive Vice President/Owner
Patrick D. Hoagland, ASLA	Vice President/Owner
Nancy K. Nozik, AIA	Vice President/Owner
Eric M. Chambers, AIA, LEED GA	Vice President/Owner
Charles L. Schneider, P.E.	Vice President/Owner
Philip N. Schilffarth, AIA, CID, LEED AP	Vice President/Owner
Ian C. Beattie, CSI, CCCA	Vice President/Owner
Richard T. Parker, AIA, LEED AP	Principal
Elizabeth S. Holser, AIA	Principal

## EXPERIENCE WITH LFUCG PROJECTS

BCI has performed a variety of projects for LFUCG over the last few decades. Recently BCI performed the **Parks and Recreation Master Plan, Aquatics Master Plan**, and design of the **Castlewood Splash Pad and Douglass Spash Pad** for the LFUCG Division of Parks and Recreation. Previously, BCI designed the **Woodland, Southland, and Castlewood Aquatic Centers** for the LFUCG.

BCI is familiar with the LFUCG Consultant Services Agreement, having worked on multiple City projects including the **LFUCG Fire Stations No. 2, 24, and 9**. BCI has used this on many projects and has no issues with this contract type and scope of services.

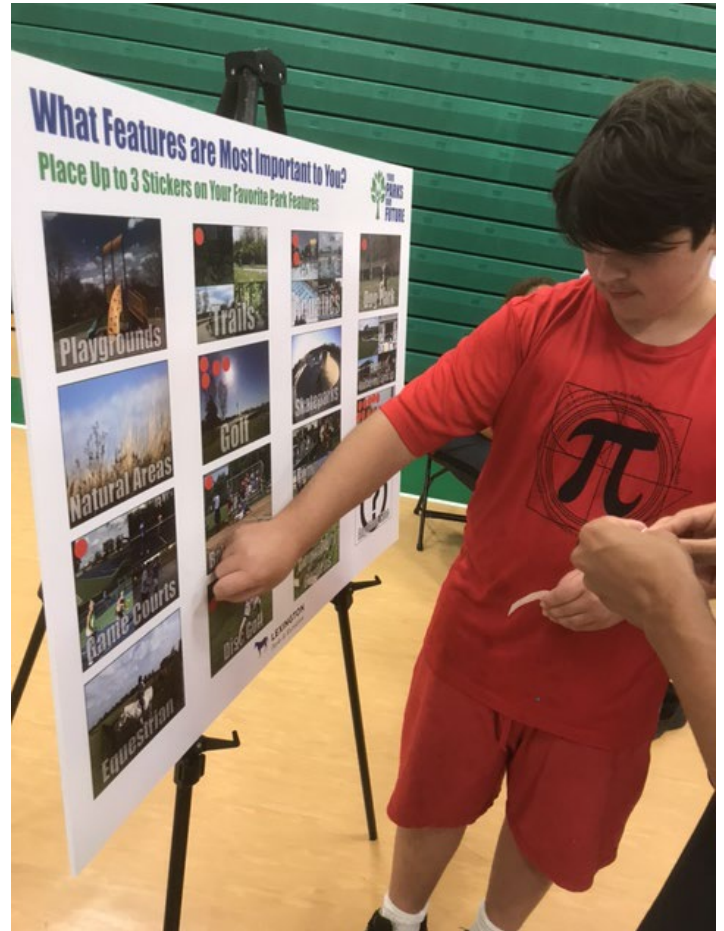
## BCI KNOWS CARDINAL RUN PARK

The staff members of BCI are very familiar with Cardinal Run Park North. We prepared concept plans for Lexington Catholic High School when they were considering developing the site as their athletic complex. Our staff also explored this site during the Parks and Recreation Master Plan in 2017/2018 and provided recommendations in the Master Plan based upon the analysis of the unmet needs in Southwest Lexington and extensive citizen engagement.

On a more personal note, Patrick Hoagland regularly walks his dog through Cardinal Run South Park and will take a personal interest in the development of Cardinal Run North.

## SPECIALISTS IN CITIZEN ENGAGEMENT

The LFUCG is well aware of the citizen engagement abilities of BCI through our involvement in the Parks and Recreation Master Plan and Aquatics Master Plan. Both of these efforts included public open houses, multiple stakeholder meetings, staff engagement, Park and Recreation Board meetings, Steering Committee meetings, council presentations, surveys, online engagement, and much more. Since then and as a result of the COVID Pandemic, BCI has developed additional skills and methods in engagement such as the use of Menti Polls in meetings, online meetings, and has gone back to basics by meeting people where they are, in the parks.



## SPECIFIC ABILITIES

The staff of BCI has the knowledge needed to lead the City of Lexington through the process of master planning and designing the new park. BCI has a nationally prominent portfolio of both planning and design assignments with respect to parks in the eastern United States plus Texas, all prepared by the staff in Lexington. The depth of BCI experience includes more than:

- 80** Park and Recreation System Plans
- 100** Miles of trails
- 200** Park Master Plans
- 300** Park Design Projects
- 16** Amphitheaters
- 80** Park & Recreation System Plans
- 35** Recreation Centers
- 182** Soccer/Football Fields including some artificial turf fields

195	Baseball/Softball Fields
120	Tennis/Pickleball Courts
60	Basketball Courts
50	Splash Pads
150	Family Aquatic Centers and Pool Renovations
6	Dog Parks

Specific abilities can be summarized as follows:

1. BCI customizes **Citizen Engagement** plans for each assignment, resulting in reaching consensus and implementation of projects. BCI has facilitated thousands of public engagement workshops, open houses, presentations, surveys, stakeholder groups, strategic planning meetings, and much more.
2. **BCI Knows Lexington** and the Cardinal Run Park North site through previous planning for Lexington Catholic High School when it owned the property and explored moving its athletic facilities to this site. Additionally, during preparation of the Parks and Recreation Master Plan, BCI Staff analyzed the needs of this area of Lexington and recommended the appropriate facilities this site should provide as requested in the extensive public engagement and in the analysis of services in the area.
3. BCI understands municipal finance and can guide recreation professionals in recommending projects that are feasible to implement.
4. BCI works continually with industry leaders in developing new products for parks.
5. BCI professionals are regular speakers at national (i.e., NRPA) congresses, state associations, industry associations, and universities with respect to leisure services.
6. BCI professionals are passionate about their work, responsive to clients, and continuously expand their knowledge of the industry.

## THE BCI TEAM

The BCI Team includes the in-house disciplines of landscape architecture, architecture, civil engineering, transportation engineering, environmental planning, and surveying that will be needed to successfully complete this project. The project will be coordinated by Patrick Hoagland, ASLA, who has worked closely with several Kentucky park and recreation projects over the last 32 years and who was Project Manager for the Parks and Recreation Master Plan and Aquatics Master Plan for LFUCG. The BCI Team will be supplemented by sub-consultants to provide structural engineering, mechanical/electrical/plumbing engineering, and other services as needed.

## PROJECT PHASING AND FUNDING

The ability to plan for the long-term phasing of a project such as this is extremely important. There will be a wish to open the park for public use as quickly as possible while balancing the need to develop the park in a logical and efficient manner. The City will want to be in a position to take advantage of grant and funding opportunities as they become available. Utilities must be designed for the long term in the early phases. The projects highlighted in this submittal demonstrate the ability of BCI to develop projects in this manner, including the development of:

- **Monroe Bicentennial Commons** (Monroe, Ohio) (45 acres) which has three phases complete and several more planned.
- **Patricia Allyn Park** (200 acres) (Clearcreek Township (Warren County), Ohio) which was master-planned and developed in five phases.
- **Oak Grove Park** (Centerville, Ohio) (101 acres) which was planned and developed in several phases.
- **Millennium Park** (Danville, Kentucky) which was planned and developed in six phases.



- The 260-acre **Harbin Park** (Fairfield, Ohio) was master-planned by BCI. One phase has been implemented and a second is starting construction with several more phases to go.

In each of these and many more projects, BCI assisted in acquiring funding through presentations to City Councils, assisting with levies, and grant assistance. BCI has assisted communities in Kentucky to obtain more than **\$15 million in grant funding and another \$6 million in adjacent states.**

## CONCLUSION

Our Team is looking forward to the opportunity to help Lexington to realize its vision of developing the Cardinal Run Park North to serve its citizens. We look forward to furthering engagement with the community to develop this park to fulfill the unmet needs of Lexington.

# TEAM PARTNERS

## SUB-CONSULTANT UTILIZATION

BCI has utilized the consulting services of **Shrout Tate Wilson, Poage Engineers & Associates, and EHI Consultants** for more than 25 years and **Abbie Jones Consulting** for more than 11 years. In fact, BCI and EHI Consultants worked together on the LFUCG Park and Aquatics Master Plans. Relationships have been forged between the five firms which yield a more thorough effort and a better communicated and coordinated project. There will be no new relationships to stumble over on this project!



**Shrout Tate Wilson Engineers** is a solutions-oriented, innovative, and people-first engineering and commissioning firm specializing in energy-efficient mechanical and electrical systems.

Shrout Tate Wilson's approach to engineering has driven their impressive growth and their efforts have resulted in extensive repeat business. Whether projects are large or small, they demonstrate every day how good project management leads to systems that are functionally elegant, on time, and on budget.



**Poage Engineers & Associates** was formed in 1969 and incorporated in 1974. They have provided Structural Engineering Services on thousands of projects with clients including Architects, Engineers, Owners, and all levels of Government (Municipal, State, and the Federal Government).

Poage Engineers & Associates has structural design experience on a wide range of structures including buildings, bridges, towers, water treatment facilities, wastewater treatment plants, and parking garages. The company has an extensive history of providing economical design services on almost every type of construction including concrete, precast prestressed concrete, post tensioned concrete, steel, masonry, and wood. They are also quite experienced in renovations, rehabilitations, structural assessments and troubleshooting construction problems.



**Abbie Jones Consulting (AJC)**, established in 2011, specializes in land surveying/utility locating, traffic counts, and civil engineering. AJC provides mapping, boundary, topographic, aerial control, airfield, subsurface utility engineering (SUE), geodetic control, inspections, asbuilts, ALTA/ACSM, and construction staking land survey services. Their engineering services include site design, transportation engineering, sanitary & storm system design, and permitting. Their CAD technicians are skilled in both AutoCAD and Microstation.



**EHI Consultants** is an award-winning, 25-year-old local planning firm located in Lexington and Louisville, Kentucky, that has provided services to a number of communities throughout Kentucky and the Southeast Region. EHI is staffed with accredited and professionally licensed individuals with the resources and capacity to provide a comprehensive range of planning-related services. EHI has always been an accessible multi-disciplinary planning, engineering, and design firm that recognizes the value of planning for a sustainable and equitable social and physical environment.

EHI believes in a community engagement process that has the ability to engage, excite and empower local citizens and transform communities. Our approach to community engagement is not a public relations strategy but an honest attempt to include citizens in an inclusive and participatory planning process. This happens by creating a community engagement process that is inclusive, building relationships and capacity for communities to resolve conflicts and achieve consensus. EHI has built a record of success by working with our clients to develop personalized community outreach plans with clear messages that resonate with diverse audiences. Interactive project websites, innovative outreach events, surveys, and direct mail campaigns are just a few of the creative communication strategies we have used to deliver information to citizens and get them engaged and excited about the process.





## MARKET SECTOR LEADER IN RECREATION, PLANNING, AND LANDSCAPE ARCHITECTURE

Patrick D. Hoagland, ASLA, will serve as the Principal-in-Charge. He has more than 40 years of experience, focused on parks and recreation planning and design, including extensive public engagement and consensus-building projects. Mr. Hoagland was the Project Manager and Principal-in-Charge for both the **Lexington Parks and Recreation Master Plan** and the **Lexington Aquatics Master Plan**. He is also a frequent user of Lexington Parks. His dog walks frequently take him to Cardinal Run Park South.

In 1989, BCI recruited Mr. Hoagland to become Division Principal, charged with growing the firm's park planning and design expertise. In the ensuing 30 years, he has developed a staff that includes planning, design, and engineering. He has become recognized nationally in the field of Park System Planning and Citizen Engagement, all the while completing more than 300 park design assignments. Mr. Hoagland has designed hundreds of parks in Kentucky, Ohio, and other states. Additionally, he has facilitated strategic planning for several communities as part of Park System Master Planning and recently led the Kentucky Recreation and Parks Society through their Strategic Plan. He is a 1977 graduate of The Ohio State University with a BSLA degree.

Mr. Hoagland has made presentations to the NRPA Annual Congress and State Park and Recreation Associations in Kentucky, Ohio, New Jersey, West Virginia, Texas, and Arizona. Topics of these presentations have included: Park and Recreation Master Planning; Social Needs and Conditions Index - Neighborhood Based Needs Assessments; Community Master Planning Toolbox; Trends in Parks and Recreation; Aquatic Facility Planning and Design; Parks Maintenance; and Skate Park Planning and Design.



## EXPERIENCE MATTERS

### KENTUCKY PARKS AND RECREATION MASTER PLANS

Berea  
 Frankfort  
 Boone County  
 Covington  
 Paducah  
 Danville  
 Glasgow  
 Lexington  
 Bowling Green  
 Muhlenberg County  
 Montgomery County  
 Oldham County  
 Scott County  
 Boone County  
 Madison County  
 Campbell County  
 Ft. Thomas  
 Florence  
 Kenton County  
 Ft. Mitchell  
 Jessamine County

### KENTUCKY PARKS

Barb Cook – Phase 1  
 Covington, Kentucky  
 North Pointe Park  
 Boone County, Kentucky  
 Waller Stephenson Mill Park  
 Boone County, Kentucky  
 Flat Run Veterans Park  
 Cynthiana, Kentucky  
 Muhlenberg County Park  
 Muhlenberg County, Kentucky  
 Middleton-Mills Park  
 Kenton County, Kentucky  
 Michael O. Buchanan Park  
 Warren County, Kentucky  
 Stringtown Park  
 Florence, Kentucky  
 Anderson Dean Park  
 Harrodsburg, Kentucky  
 Grant County Park  
 Grant County, Kentucky  
 Phil Moore Park  
 Warren County, Kentucky  
 Ephram White Park  
 Warren County, Kentucky  
 Millennium Park  
 Boyle County, Kentucky

### OTHER KENTUCKY PROJECTS

Sayre School Athletic Complex  
 Lexington, Kentucky  
 Weisiger Plaza  
 Danville, Kentucky  
 Centre College Athletic Complex  
 Danville, Kentucky  
 Greenville Downtown Plaza  
 Greenville, Kentucky  
 University of the Cumberlands  
 Tennis Complex  
 Williamsburg, Kentucky  
 Livingston County Ball Complex  
 Livingston County, Kentucky  
 Brooks Stadium  
 Paducah, Kentucky  
 Bee Creek Trail  
 Murray, Kentucky  
 Paducah Greenway Phase 2  
 Paducah, Kentucky  
 Clear Creek Greenway Master  
 Plan  
 Shelbyville, Kentucky



## SECTION II. KEY STAFF



RECREATION, PLANNING, AND LANDSCAPE ARCHITECTURE MARKET SECTOR LEADER

## PATRICK D. HOAGLAND, ASLA

Principal-In-Charge

### EDUCATION

The Ohio State University,  
B.S. Landscape Architecture

### AFFILIATIONS

American Society of Landscape Architects  
(KY Chapter – President, 1984 and Trustee,  
1991 - 1996)

Kentucky Recreation and Park Society

Ohio Parks and Recreation Association

Kentucky Board of Landscape Architects  
(2019 - 2022)

### REGISTRATIONS

Registered Landscape Architect:

CLARB 1339

Georgia LA001486

Indiana LA22100014

Kentucky 316

New Jersey 21AS00096200

Ohio 663

South Carolina LSA 1475

Tennessee 0487

Texas 2781

Virginia 0406001787

West Virginia 352

### RELEVANT EXPERIENCE

#### LEXINGTON PARKS AND RECREATION MASTER PLAN

Lexington, Kentucky

#### MILLENNIUM PARK

Danville, Kentucky

#### MILLS ROAD PARK

Kenton County, Kentucky

#### UNIVERSITY OF THE CUMBERLANDS TENNIS CENTER

Williamsburg, Kentucky

#### PATRICIA ALLYN PARK

Clearcreek Township, Ohio (Phases 1-6)

#### MIKE MILLER PARK

Marshall County, Kentucky



## DARRELL DOUGLAS, RLA, LEED AP

Project Manager

### EDUCATION

University of Kentucky, B.S. Landscape Architecture

### REGISTRATIONS

Registered Landscape Architect:  
Kentucky 547  
LEED AP

### AFFILIATIONS

Central Kentucky Ornamental and Turf Grass Association (Board Member 2004 - 2008)

Central Kentucky Football Officials Association (Executive Board Member 2008 - 2012)

Mr. Douglas has 30 years of experience. His background includes design for parks, athletic complexes, and outdoor recreation areas, as well as master planning for a variety of businesses and military installations. Additionally, he has performed site development and construction administration for schools, banks, restaurants, judicial centers, and healthcare facilities, among others.

### RELEVANT EXPERIENCE

#### **PARK DUVALLE PLANTING PLAN\***

Louisville, Kentucky

#### **UNIVERSITY OF KENTUCKY GREEK PARK SITE DEVELOPMENT\***

Lexington, Kentucky

#### **SCOTT COUNTY MIDDLE SCHOOL FOOTBALL STADIUM\***

Georgetown, Kentucky

#### **JESSAMINE COUNTY TRACK PROJECTS\***

Nicholasville, Kentucky

#### **MERCER COUNTY SOFTBALL FIELD\***

Harrodsburg, Kentucky

#### **UNIVERSITY OF KENTUCKY DORMS RECREATION FACILITIES\***

Lexington, Kentucky

#### **UNIVERSITY OF KENTUCKY TENNIS COURT RELOCATION\***

Lexington, Kentucky

\*completed with previous firm



## PHILIP N. SCHILFFARTH, AIA, CID, LEED AP, AFO

Architect

### EDUCATION

University of Kentucky, College of Design,  
Bachelor of Architecture

PSMJ Project Manager Bootcamp – 2014

### REGISTRATIONS

Registered Architect:

Florida AR102008

Indiana AR12100070

Kentucky 7451

Ohio ARC1817464

Certified Interior Designer:

Kentucky #0318CID

LEED AP #10375089

### AFFILIATIONS

LEED AP, 2008 - Present

AIA, Member 2008 - Present

NCARB Program, 2008 - Present

AFO, 2016 - Present

Mr. Schilffarth is a Licensed Architect and member of the American Institute of Architects. He also is a LEED-Accredited professional and maintains credentials as an Aquatic Facility Operator. Mr. Schilffarth is a graduate of the University of Kentucky School of Architecture College of Design and focuses the majority of his professional development in recreational and aquatic design. He has more than 14 years of experience and has served as a Project Manager for the majority of that time.

### RELEVANT EXPERIENCE

#### LEXINGTON PARKS AND RECREATION MASTER PLAN

Lexington, Kentucky

#### WHITAKER FAMILY YMCA

Lexington, Kentucky

#### CARTER COUNTY SPORTS COMPLEX

Carter County, Kentucky

#### MUHLENBERG COUNTY PARK

Muhlenberg County, Kentucky

#### UNIVERSITY OF THE CUMBERLANDS TENNIS AND STUDENT COMPLEX

Williamsburg, Kentucky





## **CHARLES L. SCHNEIDER, P.E., AFO, CPO**

Civil Engineer

### **EDUCATION**

University of Texas, University of Kentucky,  
B.S.C.E Hydrology and Hydraulics

### **REGISTRATIONS**

Registered Engineer:

Kentucky 22599

### **AFFILIATIONS**

2002 Certified Pool Operator

Ohio Aquatic Council

LTD 2008

Aquatic Facility Operator 2009

Mr. Schneider is a civil engineer and specialized aquatics facility designer. He leads the Lexington Engineering Division of the firm and brings more than 30 years of experience in municipal aquatic centers, designing aquatic centers, splash pads, natatoriums, and community pools, including layout, system design, and pool mechanical systems. In addition to his technical skills, Mr. Schneider is a Certified Pool Operator and Aquatic Facility Operator.

### **RELEVANT EXPERIENCE**

#### **SHILLITO PARK AQUATIC CENTER CONCEPTS**

Lexington, Kentucky

#### **LEXINGTON PARKS & RECREATION AQUATICS MASTER PLAN**

Lexington, Kentucky

#### **DOUGLAS AND CASTLEWOOD PARKS SPLASH PADS**

Lexington, Kentucky

#### **PHIL MOORE PARK**

Warren County, Kentucky

#### **MICHAEL O. BUCHANON PARK**

Warren County, Kentucky

#### **EPHRAM WHITE PARK**

Warren County, Kentucky

#### **MUHLENBERG COUNTY PARK**

Muhlenberg County, Kentucky



## MONICA G. SUMNER, AIA

Architect

### EDUCATION

University of Kentucky, Bachelor of Architecture

### REGISTRATIONS

Registered Architect:

Kentucky 5641      Michigan 1301065317  
Ohio ARC.1917919      Pennsylvania RA409490

### AFFILIATIONS

AIAS, 1988 - 1993

President Student Body - College of Architecture, 1992, 1993

NCARB (Intern Development Program)

President Local Chapter-Business Network International

Advisory Committee, Lexington Community College Architectural Technology Program, 2001 - 2003

President Spindletop Homemakers 2007 - 2008

Lexington Architectural Review Board 2008 - 2010

President Spindletop Community Association 2010 - 2012

Ms. Sumner is a Principal with BCI and has extensive experience in park and recreation facility evaluation and design. Ms. Sumner started her career with BCI in 1993 and since that time, she has emerged as an award-winning designer. Ms. Sumner currently is serving as the Consulting Architect on several Parks, Recreation, and Open Space Master Plans. She was involved in the design of dozens of aquatic facilities, recreation centers, amphitheaters, and park structures.

### RELEVANT EXPERIENCE

#### WEISIGER PARK

Danville, Kentucky

#### MILLENNIUM PARK

Danville, Kentucky

#### MONROE BICENTENNIAL COMMONS

Monroe, Ohio

#### CYNTHIANA-HARRISON COUNTY PARK

Cynthiana, Kentucky

#### FLORENCE SKATEPARK

Florence, Kentucky

#### MUHLENBERG COUNTY PARK

Muhlenberg County, Kentucky



## LISA W. SHUSTER, RLA, LEED GA

Landscape Architect

### EDUCATION

The Ohio State University, B.S. Landscape Architecture, Minor, City and Regional Planning

### REGISTRATIONS

Registered Landscape Architect:

Kentucky 956

USGBC LEED Green Associate

### AFFILIATIONS

Vice President of the Student Chapter of the American Society of Landscape Architecture (SCASLA), 2006 - 2007; Secretary 2005 - 2006

Ms. Shuster graduated from The Ohio State University with a Bachelor of Science in Landscape Architecture and a minor in City and Regional Planning in 2007, just before she began working at Brandstetter Carroll Inc. She is a LEED Green Associate, and her experience includes site design for civic buildings, community parks, civil site design, feasibility studies, and GIS mapping. Her design work encompasses projects in the Kentucky, Ohio, New Jersey, Georgia, and Texas.

### RELEVANT EXPERIENCE

#### LFUCG COLDSTREAM PARK STREAM CORRIDOR RESTORATION AND PRESERVATION PROJECT\*

Lexington, Kentucky

#### NICHOLASVILLE POCKET PARK\*

Nicholasville, Kentucky

#### INDIAN FORT TRAIL\*

Berea, Kentucky

#### LOWER HOWARD'S CREEK NATURE AND HERITAGE PRESERVE TRAIL IMPROVEMENT PROJECT\*

Clark County, Kentucky

#### SCAFFOLD CANE SHARED-USE TRAIL\*

Berea, Kentucky

\*completed with previous firm



## MICHAEL E. CARROLL, AIA

Architect/Quality Control

### EDUCATION

University of Cincinnati, College of Design, Art, Architecture, Bachelor of Architecture

The Harvard Graduate School of Design, "The New American Courthouse"

### REGISTRATIONS

Registered Architect:

Illinois 001.016181	Kentucky 2391
New Jersey 18003	New York 03 026145
Ohio ARC.7906423	Oklahoma 6624
South Carolina 6475	Tennessee 100682
Texas 17331	Virginia 0401005846
Wisconsin 8093	

### AFFILIATIONS

American Institute of Architects

National Council of Architectural Registration Boards

Leadership Lexington 1985 - 1986

Mr. Carroll is a co-founder of Brandstetter Carroll Inc. He has more than 40 years of experience on a diverse portfolio of projects including municipal recreation and aquatic centers, correctional facilities, courthouses, and public administration buildings. He also is well-versed in conducting city-wide facilities Master Plans for recreation, public safety, and facilities management complexes. Mr. Carroll has served as Principal-in-Charge and/or Project Manager for assignments in 15 states.

### RELEVANT EXPERIENCE

#### **BOWLING GREEN RECREATION CENTER**

Bowling Green, Kentucky

#### **CLEARCREEK FAMILY ACTIVITY CENTER**

Shelbyville, Kentucky

#### **MASTER PLAN FOR PARKS**

Bowling Green, Kentucky

#### **MILLENNIUM PARK**

Danville, Kentucky

#### **KENTON COUNTY MASTER PLAN**

Kenton County, Kentucky

#### **BOONE COUNTY MASTER PLAN**

Boone County, Kentucky



## IAN C. BEATTIE, CSI, CCCA, AFO

Construction Administrator

### EDUCATION

Lexington Community College, Associate Degree in Architecture

University of Kentucky, College of Architecture

### REGISTRATIONS

Certified Construction Contract Administrator

Construction Document Technologist

Aquatic Facility Operator

### AFFILIATIONS

Volunteer Fire Fighter/First Responder, Camp Dick Fire & Rescue, Lancaster, Kentucky (1997 - 2003)

Former Technical Affiliate to Department of Architecture, Lexington Community College

Secretary of Fraternal Order of Police, Lodge #59

Scott County Constable, Georgetown, Kentucky

Mr. Beattie serves as the Construction Administrator on the majority of the firm's Architectural projects, including public safety facilities, courthouses, libraries, city and county administration buildings, maintenance facilities, recreation centers, and aquatic centers. He is recognized as a Certified Construction Contract Administrator by the Construction Specifiers Institute.

### RELEVANT EXPERIENCE

#### LEXINGTON PARKS & RECREATION MASTER PLAN

Lexington, Kentucky

#### UNIVERSITY OF THE CUMBERLANDS TENNIS CENTER

Williamsburg, Kentucky

#### WEISIGER PARK

Danville, Kentucky

#### MILLENNIUM PARK

Danville, Kentucky

#### MUHLENBERG COUNTY PARK

Muhlenberg County, Kentucky

#### PADUCAH RECREATION CENTER

Paducah, Kentucky

#### PHIL MOORE PARK COMMUNITY CENTER

Warren County, Kentucky

DOCUMENT: RESUME

## E. TYLER WILSON, P.E., RCDD, LEED AP, CEM, CxA

### Principal-In-Charge



### Relevant Project Experience

- Yew Dell Botanical Gardens Event Pavillion - Crestwood, KY
- University of Kentucky Arboretum Visitor Center - Lexington, KY
- Bernheim Arboretum and Research Forest Visitor Center - Clermont, KY
- Raven Run Visitor Center - Lexington, KY
- Blue Lick State Park - Carlisle, KY
- Toyota Bluegrass Miracle League - Lexington, KY
- Great Crossing High School Athletic Facilities - Georgetown, KY
- Scott County High School Athletic Facilities - Georgetown, KY

### Professional Experience

#### Shrout Tate Wilson Consulting Engineers

2000-Present

Overall company responsibility for the design, specification, estimation, and construction administration of electrical systems including: energy efficient lighting and power distribution systems, transient voltage surge suppression, communication systems, and fire alarm systems. Previous client projects include municipal buildings, educational facilities, churches, office buildings, visitor centers, equine facilities, & healthcare facilities.

#### The Mason & Hanger Group, Inc.

1995-2000

Responsible for the electrical design and specification of energy efficient lighting systems, power distribution systems, voice/data networks, fire alarm systems, security systems, transient voltage surge suppression and lighting protection systems.

### Education

#### Juris Doctor, May 1994

University of Kentucky College of Law

#### Bachelor of Science in Electrical Engineering, May 1991

University of Kentucky College of Engineering

### Registrations

- PE (Professional Engineer) KY Registration # 20725
- RCDD (Registered Communications Distribution Designer)
- LEED (Leadership in Energy and Environmental Design) Accredited Professional
- CEM (Certified Energy Manager)
- CxA (Certified Commissioning Authority)



### Professional Affiliations

- Kentucky and National Society of Professional Engineers
- BICSI (Building Industry Consulting Services International)
- National Fire Protection Association
- Illuminating Engineering Society
- Institute of Electrical and Electronic Engineers
- US Green Building Council Member

### Community Involvement

- One to One Reading Program at William Wells Brown Elementary
- Rotary Club Board of Directors 2008-2013
- Toyota Bluegrass Miracle League Board of Directors 2007-2009
- MathCounts State Competition Committee, Past Co-Chair

DOCUMENT: RESUME

## BRANDON SLUSHER, P.E.

*Mechanical Engineer*



### Relevant Project Experience

- Charles Young Splash Park - Ashland, KY
- Erlanger Elsmere Lloyd High School Football Stadium & Pressbox Renovation - Erlanger, KY
- BCS Athletic Fields - Florence, KY
- Warren East High School Athletic Complex - Bowling Green, KY

### Professional Experience

#### Shrout Tate Wilson Consulting Engineers

2009-Present

Responsible for the HVAC and plumbing design, specification, estimation, and construction administration of mechanical systems. Previous client projects have included educational facilities, churches, office buildings, visitor centers, equine facilities, healthcare facilities, US Army Corps of Engineers facilities and water/wastewater treatment facilities.

### Education

**Bachelor of Science in Mechanical Engineering**, May 2009  
University of Kentucky College of Engineering

### Registrations

- PE (Professional Engineer) KY Registration # 30310

### Professional Affiliations

- Kentucky and National Society of Professional Engineers
- American Society of Heating, Refrigerating and Air Conditioning Engineers (ASHRAE)

### Community Involvement

- One to One Reading Program William Wells Brown Elementary
- Cornerstone Baptist Church, Deacon & Worship Leader

DOCUMENT: RESUME

## JEFF FROHLICH

*Electrical*



### Relevant Project Experience

- Charles Young Splash Park - Ashland, KY
- Crystal Beach Pool House Renovation - Jefferson, IN
- Great Crossing High School Athletic Facilities - Georgetown, KY
- Clark County High School Gym Addition & Athletic Complex - Winchester, KY
- Johnson Central High School – Pool & Athletic Facility - Paintsville, KY
- Estill County High School Baseball and Softball Field Lighting - Irvine, KY
- Perry County High School Athletics Complex - Hazard, KY
- Glasgow High School Football Complex - Harlan, KY

### Professional Experience

#### Shrout Tate Wilson Consulting Engineers

2014-Present

Responsible for the design and specification of electrical systems including: energy efficient lighting and power distribution systems, transient voltage surge suppression, communication systems, and fire alarm systems. Projects include corporate office, educational, medical, commercial and government facilities.

#### KTA, Inc. Consulting Engineers

1996-2014

KTA Principal and Treasurer of the firm. Responsible for the electrical design and specification of energy efficient lighting systems, power distribution systems, voice/data networks, fire alarm systems, security systems, transient voltage surge suppression and lightning protection systems. Projects include educational, medical, correctional, commercial and industrial facilities. Involved in KETS Systems since the introduction of the first Building Wiring Standards Manual.

### Education

Lafayette High School  
Electrical Drafting  
May 1981

### Primary Areas of Experience

- Lighting Design
- Energy Conservation
- Fire Alarm Systems
- Communication Systems
- Power and Distribution
- Special Systems
- Computer Network Systems
- Theatrical Systems
- Professional Sound Systems





## **EXPERIENCE**

Christopher Kelly is the President and one of the partners in the firm. He serves as Project Engineer and/or Engineer-of-Record on projects within the firm. Mr. Kelly has been with the firm on a full-time basis since 1987. Before working with this firm, Mr. Kelly worked for his father's construction company in all aspects of construction, from laborer to project manager and estimator

His experience gained while working at Poage Engineers, coupled with his background in construction, has enabled him to propose sound, economical building designs throughout his career.

Mr. Kelly has assisted or been responsible for the structural design of over \$950 million in construction costs with Poage Engineers.

## **Education**

University of Kentucky  
Bachelor of Science in Civil Engineering  
(emphasis on Structures) – 1987

## **Professional Organizations**

Structural Engineers Association of Kentucky  
(past president)  
American Concrete Institute  
American Society of Civil Engineers

## **Registration**

Kentucky #17615  
Indiana #19800121  
New York #080312  
U.S. Virgin Islands #737-PE

## **RELEVANT EXPERIENCE**

### **Coolivan Park & Marlboro Park Community Centers – LFUCG**

Lexington, KY

Both of these projects consisted of new community centers constructed in two parks in Lexington. Both structures were designed with load-bearing concrete block walls for both economy and durability. The roof shapes were made with wood trusses to create hip roof lines to blend in with the existing residential areas surrounding the parks.

### **McConnell Springs Education Center - LFUCG**

Lexington, KY

This project consisted of two phases, a new education building and exterior covered discovery and amphitheater. This uniquely shaped, circular, mono-sloped structure celebrates the birthplace of Lexington, showcasing the natural spring that surfaces at this location. Laminated timber roof decking and tubular beams create the open and inviting structure that feels like part of natural surroundings.

### **Dale Hollow State Resort Park Conference Center**

Albany, Kentucky

This one-story, new construction project consisted of a combination of typical spread footings, and grade beam and caisson construction. Steel and wood truss construction framed the roof, and the walls were of CMU and stone. Details were provided where the new building came in contact with an existing structure. A two-story addition was included with caisson and grade beam foundation design, steel joists and concrete slab second floor, and steel with wood trusses designed for the roof system.

### **Douglas Park**

Pool and Deck Renovation

### **Castlewood Park**

Pool and Deck Repairs

### **Woodland Park Gazebo**

**Stitzel-Weller Distillery Visitor Center**  
Louisville, Kentucky

**Dale Hollow State Resort Lodge & Addition**  
Albany, Kentucky

**Jenny Wiley State Resort Park Renovation**  
Prestonsburg, Kentucky

**Cumberland Falls State Park Lodge Renovation**  
Corbin, Kentucky

**Natural Bridge State Park Lodge Renovation**  
Slade, Kentucky

**Big Bone Lick State Park Discovery Trails/Decks**  
Union, Kentucky

**Kentucky Horse Park Big Barn Renovation**  
Lexington, Kentucky

**Boonesboro State Resort Park – New Pool and Bathhouse**  
Boonesboro, Kentucky

**Dale Hollow State Resort Indoor Pool/Fitness Center**  
Albany, Kentucky

**Mills Lane Farm Welcome Center - KSU**  
Frankfort, Kentucky

**Evan Williams Visitor Center Bourbon Experience**  
Louisville, Kentucky

**Heaven Hill Distilleries Visitors Center**  
Bardstown, Kentucky

**Stillwaters Visitor Center**  
Lexington, Indiana

**Jim Beam Visitors Experience**  
Clearmont, Kentucky



## **EXPERIENCE**

Brian Scott is the Vice President and one of the partners in the firm. He serves as the Engineer of Record, Project Manager, and Principal in Charge depending on the project and/or client. Mr. Scott has over 20 years of experience in the field of engineering and has been with the firm since 1994. While at the firm, Mr. Scott has gained valuable engineering and problem solving skills some of which include: one of the first Progressive Collapse Analyses in the State of Kentucky, FEMA 361 Storm Shelter Design, Finite Element Analysis of Manufacturing Conveying Equipment, Forensic Studies, and Fall Protection/Fall Prevention Studies. Mr. Scott has produced proficient engineering designs in virtually every construction material and project scale ranging from small renovations to several hundred thousand square feet projects. In addition to his engineering skills, Mr. Scott is well versed in construction administration and has experienced a good working relationship with both clients and contractors which has allowed him to produce successful projects.

## **EDUCATION**

-University of Kentucky  
Bachelor of Science in Civil Engineering -1994  
Master of Science in Civil Engineering - 1998

## **PROFESSIONAL ORGANIZATIONS**

Structural Engineers Association of Kentucky

## **REGISTRATION**

- Kentucky # 21768  
- Ohio # 73009  
- Virginia # 044864  
- West Virginia # 17705  
- Tennessee # 112249  
- North Carolina # 034571  
- South Carolina # 26644  
- Texas # 102843  
- Arkansas # 16612  
- Georgia #037244  
- Florida #81504  
- Mississippi #28681

## **RELEVANT EXPERIENCE**

**EKU B&T Center for the Arts**  
Richmond, Kentucky

Mr. Scott served as the project engineer as well as the engineer-of-record for this project. The project consisted of approximately 75,000 ft<sup>2</sup> with an approximate cost of \$25 million. This project could be divided up into three buildings, a three-story academic addition, an approximate 23,000 main performance theater, and an approximate 2,700 black-box theater. Because of the complexity of the structure various types of construction materials and methods were utilized in the design of the project. Mr. Scott was responsible for the management and the production of the construction documents and handled the construction administration.

**UK - Commonwealth Stadium End Zone Expansion (1998)**

**(Engineered for all Steel Connections)**  
Lexington, Kentucky

Our role in this project was to engineer all of the steel connections for the new superstructure. We analyzed and detailed all of the connections for the gravity and lateral force resisting systems.

**Kentucky Basketball Academy**  
Lexington, Kentucky

Served as the design engineer as well as handling the construction administration for the project. The project consisted of approximately 43,000 square foot on the ground level with a mezzanine level of approximately 4,500 square foot. The layout of the structure allowed for 5 regulation basketball courts and associated support spaces.

**UK Center for Rural Health**  
Hazard, Kentucky

Mr. Scott served as the design engineer as well as handling the construction administration for the project. The project consisted of approximately 57,000 square foot with a total construction cost of \$8.3 million. The superstructure was a steel frame with steel floor beams, while the foundation consisted of caissons with grade beams and a post-tensioned slab.

**The Omni Center**

Lexington, Kentucky

Served as the design engineer as well as handling the construction administration for the project. The project consisted of approximately 51,000 square foot on the ground level with a mezzanine level of approximately 19,000 square foot. The building was a multipurpose facility consisting of a Dance Studio, HIIT Training and Physical Therapy Facility, multiple spring floor Cheerleading Studios, Gymnastics Facility with recessed floor pits, and associated locker rooms and support spaces.

**Asbury University - Andrew S. Miller Center for Communication Arts**

Wilmore, Kentucky

Served as the project engineer as well as the engineer-on-record. Also responsible for the management and production of the construction documents and handled the construction administration. The project consisted of approximately 52,000 sf<sup>2</sup>. The project consisted of a TV studio (6,000 sf<sup>2</sup>) and a black box theater (5,000 sf<sup>2</sup>) both of which had a tension grid floor system above. The structure itself was a two-story steel framed structure with concentrically braced steel frames.

**EKU Begley Building Repair, Study, & Implementation**

Richmond, Kentucky

**Lexington Catholic High School Athletic Facility**  
Lexington, Kentucky

**Clear Creek Family Activity Center**  
Shelbyville, Kentucky

**College Park Natatorium Addition and Renovation**

Winchester, Kentucky

**Scott County Field House**  
Georgetown, Kentucky

**McNabb Field House**  
Mt. Sterling, Kentucky

## Abbie Jones, PE, PLS

Ms. Abbie Jones is the founder and owner of Abbie Jones Consulting in Lexington, a Civil Engineering and Land Survey consulting firm which just celebrated it's 10<sup>th</sup> anniversary and employs 10 staff. The firm includes 2 licensed Professional Land Surveyors (PLS), 3 PLS in training, 3 licensed Professional Engineers(PE), 1 PE in training, as well as drafters and field crew.

Ms. Jones has worked in the engineering and survey industry for 22 years, working in both the public and private sectors. She has a solid background in all aspects of project conception, design, and implementation with a strong reputation of solid performance, responsiveness, and accountability. Ms. Jones has been active in various professional engineering organizations and co-authored papers and regulations.

The firm provides private and government boundary surveys, topographic and utility surveys, ALTA/ASCM surveys, construction staking, layout and description of easements, site plans, drainage and grading plans, sewer design, detention design, traffic counts, utility locating, and permitting. The firm currently holds ongoing contracts with: KYTC, Lexington, University of Kentucky, and the Kentucky Finance Cabinet. The KYTC contracts include statewide surveying, traffic planning, traffic forecasting, and statewide aviation. The Lexington contracts are for multiple categories with the Engineering and Water Quality departments, primarily for surveying. For 2020 to date, 80% of our work has been surveying and 20% has been engineering.

Originally from Tennessee, Ms. Jones married a Kentuckian while working in Georgia, where she was honored as the 2005 Young Engineer of the Year. The couple spent two years in Texas for his neuroscience fellowship before moving near his family in Kentucky. Ms. Jones has previously worked as a consultant as well as a City Engineer for two cities: Hurst, TX and Milton, GA. Abbie is pleased to call Lexington, KY her permanent home. She is active in church choirs and charity work.

### Previous Personal Employment:

2011-Present	Abbie Jones Consulting, Civil Engineering and Survey Firm. Role: President, engineer, surveyor, quality reviews.
2009-2010	Nesbitt Engineering – Civil Engineering and Survey Firm focused on eastern KY municipalities. Role: sanitary sewers, waterlines, KYTC LPA engineering projects, floodplain consulting, surveying
2008-2009	City of Hurst, TX – City Engineer and Floodplain Administrator. Manage Engineering Division of 8 including GIS and Construction Inspection
2002-2008	Low Engineers, Atlanta, GA – Civil, Survey, Photogrammetry, and Privatized Municipal Services. Role: Service to newly formed City of Milton, GA as first City Engineer by contract, project manager for Fortune 500 Client
2000-2002	Pond & Company, Atlanta, GA – Full Service A/E Firm focused on Department of Defense and DOT projects. Role: engineer and GIS projects.
1996-1999	Huddleston-Steele, Murfreesboro, TN-Civil Engineering and Land Surveying Firm with up to 10 crews. Role: drafting



### EDUCATION

- ▶ Tennessee Technological University, Bachelor of Civil Engineering, 2000
- ▶ Southern Polytechnic State University, additional survey coursework 2004-2005
- ▶ Cincinnati State University, additional survey coursework 2020-2021
- ▶ Riverdale High School, 2 years of AutoCAD coursework (1994-1996)

### REGISTRATIONS OR CERTIFICATIONS

- ▶ Professional Engineer (PE) in KY, GA, TN, WV, VA, MS, OH, SC, AL, NCEES Record
- ▶ Professional Land Surveyor (PLS) in KY, GA, TN, WV, VA, NCEES Record

### AFFILIATIONS (PAST/PRESENT)

- ▶ National Society of Professional Surveyors
- ▶ National Society of Professional Engineers-KY Bluegrass Past President
- ▶ Georgia Engineering Foundation-Past President

### PUBLICATIONS & AWARDS

- ▶ NAWIC Bluegrass Diamond Award, 20
- ▶ Bluegrass Nominee for Kentucky Young Engineer of the Year 2011.
- ▶ Georgia Young Engineer of the Year 2005
- ▶ Co-author to survey chapters of the Highway Design Guidance Manual for KYTC
- ▶ KY ASCE 2011 Infrastructure Report Card, section author for Transit
- ▶ Multiple Articles, Where We Live, (Hurst) 2008-2009 (cir. 12,000)
- ▶ Editorial Board, Georgia Engineer, 2005-2007 (cir. 8,000)
- ▶ Civil Engineering Body of Knowledge for the 21<sup>st</sup> century, January 2004, America Society of Civil Engineers, (co-author)
- ▶ ACEC Atlanta Future Leaders graduate, 2004

## Clint Abbott, PE

### Introduction

Clint Abbott is a Senior Engineer with Abbie Jones Consulting. Mr. Abbott has 25 years of engineering experience covering projects across the Commonwealth. Clint is originally from Lexington and Louisville and now resides in rural Woodford County.

Clint is a senior engineer and project manager. Mr. Abbott has extensive experience including Potable Water Distribution Design and Constriction, Sanitary Sewer Collection and Pump Station Design and Construction, Grading, Drainage and Stormwater Mitigation Design and Construction, Site Design and Utility Design and Construction. Mr. Abbott has acted as support staff and project manager on numerous projects with DECA and private entities.

- **Elizabethtown Sports Park - Elizabethtown, KY \*(2018)** \$30M regional sports venue. Clint is the Site and Utility Design Engineer of Record
- The project included:
  - Half a million cubic yards of cut and fill
  - Parking Lot Design, Storm water Design, Roadway Design
  - Stormwater Design and Permitting
  - Sanitary Sewer and Potable Water Extensions into the Park
  - All State and Federal Permitting involving Wetlands and Stream Crossings
- **Jacobson Park Pavement Replacement and Trails – Lexington, KY\* (2013)** As a part of the master plan to enhance urban corridors Clint helped design the new boardwalk and pavement replacement between Eagle Creek Drive and Jacobson Park to allow easier access to attractions at Jacobson Park and Lakeside Golf Course.
- **Carter Cave Horse Campgrounds – Olive Hill, KY\*** RV campground with bath house and utilities for RVs
- **Shillito Park Trails – Lexington, KY\* (2012)** Design of the 2.4 mile shared use Lafayette Trail loop at Shillito Park and drainage
- **Cumberland Falls Upper and Lower Viewing Area – Corbin, KY\* (2017)** - Repairs and additions to two overlooks at Cumberland falls including railings, elevated walkways, aesthetic pavements and new retractable railings.
- **Cumberland Falls General Store Upgrade – Corbin, KY\* (2018)** - Site and utility work for renovated campground store.
- **Kentucky State Police Training Academy – Frankfort, KY\*(2018)**. The project included the design and permitting of potable water and fire mains, sanitary sewer mains and laterals, site grading and drainage, and storm sewer systems. Mr. Abbott helped plan expansion of the site by working with the project managers at the State to develop a utility corridor and correct found problems with the existing infrastructure as construction proceeded.
  - Design, permitting and Construction Administration of sanitary sewer collection lines and laterals; potable water extensions & services, storm sewers, detention pond, and fire mains.
- **Gateway Community and Technical College – Hebron KY\*(2016)** The project included several phases of the campus expansion that involved new buildings, mass grading, a campus loop road and additional parking, water and sanitary utilities, and stormwater retention.
  - Parking Lot Design, curb and gutter, striping, and road widening
  - Ditching, drainage improvements, pipe construction
  - The permitting of several stream crossings and floodplain encroachments with the KY Division of Water and the US Army Corps of Engineers.



### EDUCATION/TRAINING

- ▶ B.S. Civil Engineering, Speed Scientific School, University of Louisville 1999

### REGISTRATIONS OR CERTIFICATIONS

- ▶ KY PE 24737

### PREVIOUS PERSONAL EMPLOYMENT\*

- ▶ Bell Engineering, 2014-2020
- ▶ Element Design/M2D, 2006-2014
- ▶ Central Associated Engineers, 2000-2006
- ▶ Louisville Water Company:1997-2000

## Joyce Followell PE, LSIT

### Introduction

Joyce Followell is a Professional Engineer working toward Professional Land Surveyor licensure at Abbie Jones Consulting. Prior to her addition at AJC, she had broad experiences in site design, rural survey, watershed analyses, natural resource protection and hydrology. She most enjoys hydrology and designing the built world to fit the environment.

### Recent Experience

- Henry County/Carrollton Utilities, KY Forcemain for Angels Envy (2021-2022) –The 3-mile force main starts at a new lift station, follows a state highway, crossing multiple streams and roadways, with multiple driveway repairs.
- Angels Envy, Henry County (KY) Gravity Sewer (2021) – included the layout and profile of 3/4 mile of gravity sewer which crosses 2 blue-line streams, catches multiple waste sources, and winds around the property to avoid yet service current and future construction.
- Angels Envy, Henry County (KY) Hydrology (2021) – Hydrologic analysis of a 375 acre watershed, for a 350 acre property to be partially developed for a commercial business. Created a regional stormwater quality and quantity benefit system with millions of dollars in savings over previous assumptions.
- Police Roll Call Center, Lexington, KY (2021-ongoing) – Site design for property with 27ft elevation change, implementing a drive-out basement, a split-level entrance, to follow along the adjacent roadway with 5% fall along the entire elongated 2 acre site. The design includes roadway and parking lot striping; pipe construction, diversions, infiltration, drainage, stormwater retention and erosion control; sidewalks, parking lot and driveway construction.
- Glenn's Creek, Frankfort, KY (2021) – Multi-Family development in Frankfort, Ky. Ms. Followell performed the hydrologic analysis and stormwater design, and the full site design and final construction set, following through with construction material approval.
- Human Bean, II, Lexington, KY (2021-ongoing) – Redevelopment of an existing commercial site to provide a safer drive-thru pathway and enhanced traffic flow. Sharp grades were mitigated and sweeping radii were implemented. Development Plan, Site Construction Plans and Permitting were provided for the client.
- University of Kentucky @ Shawneetown (2021) – Upgrade of drainage pattern. Design of 1300 linear feet of filling a ditch, adding a pipe and modifying 9 inlets to eliminate an operations problem area. Included pipe construction and replacement, ditching, drainage repairs, and erosion control.
- USDA – NRCS, KY (1997-2005) – Watershed survey and analyses, Dam stability survey and analyses, agricultural water supply, erosion prevention, natural resource protection, animal waste containment and utilization.



### EDUCATION

- ▶ BS in Agricultural Engineering, University of Kentucky Dec. 1995 (emphasis on soil and water)

### REGISTRATIONS OR CERTIFICATIONS

- ▶ Kentucky Professional Engineer License #22037
- ▶ Kentucky LSIT Certificate #1447

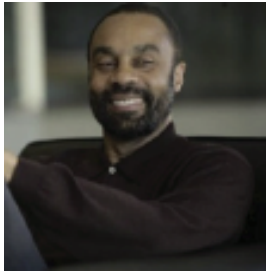
### PREVIOUS PERSONAL EMPLOYMENT

- ▶ KWM Engineering, (2017-2021)
- ▶ Thoroughbred Engineering (2017)
- ▶ Brad Armstrong Land Surveying and Engineering (2015)
- ▶ Caregiver (2008-2015)
- ▶ FRA Engineering (2005-2008)
- ▶ USDA NRCS KY (1997-2005)
- ▶ Hibbs Engineering & Surveying (1996)
- ▶ KY Division of Water, Wastewater Extension Branch (Summer Intern 95)

### SOFTWARES AND SKILLS

- ▶ AutoCAD Civil 3D
- ▶ Carlson Survey
- ▶ HEC-RAS
- ▶ HydroCAD

# PRINCIPAL-IN-CHARGE / PROJECT MANAGER



**EDWARD HOLMES,  
AICP PRESIDENT**

## EDUCATION

Bachelor of Arts, Urban Planning & Design, University of Cincinnati

## EXPERIENCE

Edward Holmes is a certified planner with over 35 years of experience focusing on incorporating sustainable planning strategies into redevelopment, master planning, environmental justice, and land use plans. As an urban planner and Principal in EHI Consultants, Ed has created sustainable development frameworks that provide benchmark considerations for future environmentally responsible planning and sustainable neighborhoods. Ed has direct experience with numerous public sector and private-sector projects throughout the Southeast United States.

**SPECIALTIES:** Urban planning / urban design, comprehensive planning, zoning and subdivision regulation plans, neighborhood plans, housing market studies, community engagement and outreach. He has been recognized by the Kentucky Chapter of the American Planning Association and the Kentucky Chapter of the American Society of Landscape Architects for his planning efforts in comprehensive and neighborhood planning, environmental justice and farmland preservation.



## DIXIE HIGHWAY BUS RAPID TRANSIT LOUISVILLE, KENTUCKY

EHI provided civil engineering design services for adding a bus rapid transit (BRT) route to service residents living along Dixie Highway and other major streets throughout the route in Louisville. Tasks consisted of inventorying of existing utilities and assisting in the development of preliminary utility concept plans, and public involvement.



## NEWTOWN PIKE EXTENSION LEXINGTON, KENTUCKY

EHI managed and led a design team of professionals in the planning and redevelopment of the Southend Park Neighborhood. This project consisted of the planning, design and redevelopment of a 25-acre urban neighborhood near downtown that was recently impacted by the extension of the Newtown Pike Roadway.



## LFUCG SMALL AREA PLANS LEXINGTON, KENTUCKY

EHI led the development of various neighborhood plans throughout Lexington. The neighborhood plans provided a development framework used to guide both public infrastructure and private investment efforts for the purpose of neighborhood revitalization and creating more livable, connected and sustainable places.



## FAYETTE COUNTY OPPORTUNITY ZONE ANALYSIS LEXINGTON, KENTUCKY

EHI performed extensive demographic analysis and zoning analysis of opportunity zones in Lexington KY. EHI worked with residents, businesses and institutions to analyze and facilitate opportunity zones that promote sustainability and economic development within Fayette County, Kentucky.



## SECTION III. SIMILAR PROJECTS



# PARKS AND RECREATION MASTER PLAN

Lexington, Kentucky

## PROJECT SUMMARY

BCI developed a long-range Master Plan for the CAPRA-Accredited system serving more than 300,000 residents with more than 100 parks and 4,415 acres of park land. The system includes a variety of neighborhood and community parks with athletic complexes, golf courses, nature parks, arts facilities, aquatic facilities, community centers, trails, and a wide variety of programs and special events. The process involved a detailed assessment of all the City's parks and recreation facilities, programs assessment, extensive public engagement, an active Citizen Steering Committee, benchmarking to other communities, strategic visioning, and detailed Action Plan.



**COMPLETED**  
2017

**SIZE**  
4,415 acres

**COST**  
\$250,000

**ROLE**  
Master Plan

**CONTACT**  
Monica Conrad, Director of Lexington  
Parks and Recreation Department  
859.425.2255  
mconrad@lexingtonky.gov





**MUHLENBERG COUNTY PARK**  
Muhlenberg County, Kentucky

## PROJECT SUMMARY

Following the completion of a County-wide parks and recreation Master Plan, Brandstetter Carroll Inc. prepared a park Master Plan and designed the first phase of a new 250-acre County Park. The park was opened in fall 2014 and includes a five-field baseball/softball complex with concession/restroom building, batting cages, five tennis courts, two basketball courts, two sand volleyball courts, picnic shelters, playground, and walking trail. Future facilities will include a splash pad, universal playground, amphitheater, disc golf, dog park, soccer complex, more trails, and additional baseball/softball fields.



**COMPLETED**  
2014

**SIZE**  
250 acres

**COST**  
\$8 million

**ROLE**  
Master Plan  
Park Design  
Landscape  
Architecture

**CONTACT**  
Tommy Barton, Executive Director,  
Muhlenberg County Parks & Recreation  
270.377.1900  
tommy@mcparks.org



## PROJECT SUMMARY

Brandstetter Carroll Inc. provided the Master Plan and design for a new 135-acre park to meet the needs of the community. Main facilities include a seven-field soccer complex, youth-baseball complex, softball complex, extensive trail system, recreation center, amphitheater, picnic areas, playgrounds, and fishing pond. Phases 1 through 6 are complete, resulting in a total cost of more than \$4.4 million.



**COMPLETED**  
2007

**SIZE**  
135 acres

**COST**  
\$4.4 million

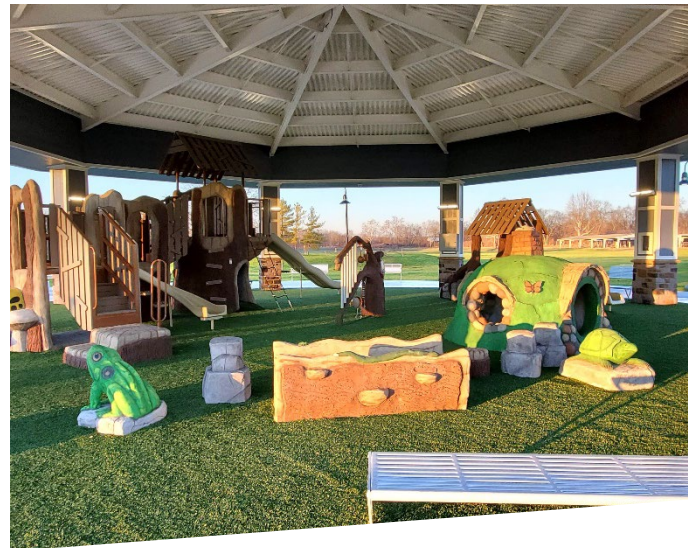
**ROLE**  
Master Plan  
Park Design

**CONTACT**  
Earl Coffey, City Manager  
859.238.1200  
Ecoffey@danvilleky.org



## PROJECT SUMMARY

Brandstetter Carroll Inc. prepared the Master Plan and phased construction documents for this park. The Master Plan consisted of designing a 45-acre park on a former site of a riverfront amusement park (Americana and LeSourdesville Lake) to serve as a passive park and for outdoor environmental education center. Features include an event center, amphitheater, two miles of trails along the Great Miami River, picnic shelters, nature-themed playground, bike park, and much more. Phase 1 was bid in December 2019 and included the site utilities infrastructure. Phase 2 was bid in spring 2021 and included park entryway, restroom, and an ages 2-5 creative playground under the former carousel shelter. Phase 3 will include a nature play area. Remnants of the former amusement park are incorporated into the design.



**COMPLETED**  
Under construction

**SIZE**  
45 acres

**COST**  
\$11 million

**ROLE**  
Master Plan  
Park Design

**CONTACT**  
Gary Morton, Public Works Director  
513.727.8953  
mortong@Monroeohio.org



**PATRICIA ALYN PARK**  
Clearcreek Township/Warren County, Ohio

## PROJECT SUMMARY

Brandstetter Carroll Inc. prepared the Master Plan and phased construction documents for this 100-acre park. Developed facilities include eight soccer fields, picnic areas, four picnic shelters, restroom, playground, 1.2 miles of paved trails, and tennis and basketball courts. Phases I through V are complete. Future phases will include an amphitheater, arboretum, nature trails, additional tennis courts, and overlooks.



**COMPLETED**  
2011

**SIZE**  
100 acres

**COST**  
\$2.6 million

**ROLE**  
Master Plan  
Park Design

**CONTACT**  
Tony Hale, Park Operations Manager  
937.748.1267  
thale@clearcreektownship.com



**OAK GROVE PARK**  
Centerville-Washington Park District, Ohio

## PROJECT SUMMARY

Brandstetter Carroll Inc. was commissioned by the Centerville-Washington Park District to perform Master Planning services and construction documents for this 101-acre park. The park was planned to be developed in multiple phases. The site contains 92 acres of farmed land and a nine-acre wooded area with a pond. The park includes five baseball fields, 15 soccer fields, walking trails, playground, tennis courts, dog park, and a pond. The park was developed in five phases.



**COMPLETED**  
2008

**SIZE**  
101 acres

**COST**  
\$ 2.4 million

**ROLE**  
Master Plan  
Park Design

**CONTACT**  
Kristen Marks, Director  
937.433.5155  
kmarks@cwpcd.org



## PROJECT SUMMARY

Brandstetter Carroll Inc. developed a comprehensive and long-term parks and recreation Master Plan for both the City of Beavercreek and Beavercreek Township. The process included extensive public participation including a statistically valid household needs assessment survey, web-based survey, stakeholder group discussions, and public workshops. A detailed inventory of the current City- and Township-owned properties has been conducted. BCI developed the future vision for parks and recreation, along with strategic goals and objectives to accomplish the proposed vision. The Master Plan includes conceptual plans for several parks to serve the community and the recommendations for land, facilities, trails, and programs to serve both the City and the Township.



**COMPLETED**  
2012

**SIZE**  
26 acres

**COST**  
\$2.4 million

**ROLE**  
Master Plan

**CONTACT**

Ken Kushner, Director  
513.474.0003 x 2492  
Kkushner@Andersonparks.com



## PROJECT SUMMARY

Brandstetter Carroll Inc. provided this client with a Master Plan and construction documents for the development of a 100-acre park. The site provides a variety of environments including fairly flat meadows, steep wooded hillsides, heavily wooded areas, and three ponds. Improvements include two soccer fields, a two-field football complex with concession/restrooms and pressboxes, five baseball fields with central restroom/concession/pressbox building, trails, nature center, amphitheater, picnic areas, basketball court, playgrounds, and a new lake.



**COMPLETED**  
1997

**SIZE**  
100 acres

**COST**  
\$2 million

**ROLE**  
Master Plan  
Park Design

**CONTACT**  
Rhonda Ritzi  
Kenton County Parks & Recreation  
859.525.7529  
Rhonda.Ritzi@KentonCounty.org



# UNIVERSITY OF THE CUMBERLANDS TENNIS COMPLEX

Williamsburg, Kentucky

## PROJECT SUMMARY

The University of the Cumberlands engaged BCI to relocate their aging tennis complex with a new, lighted six-court complex to host matches and tournaments. Other student-oriented features include a practice golf putting green, restroom, hammock area, plaza spaces, sand volleyball court, and more. The entire facility was designed and constructed in 2020.



**COMPLETED**  
2020

**SIZE**  
5 acres

**COST**  
\$2.4 million

**ROLE**  
Complex Design

**CONTACT**  
Travis Wilson  
Director of Operations and Security  
606.539.4236  
travis.wilson@ucumberlands.edu





## PROJECT SUMMARY

Brandstetter Carroll Inc. had previously prepared the Somerset County Park Commission Capital Facilities Plan in 2005, which recommended the development of a large regional park and recreation complex in the southern portion of the county to host a variety of active sports and recreation facilities. The County acquired 369 acres from the Federal Government which was a former GSA Depot site during World War II.

BCI and The RBA Group were selected to prepare the Master Plan for the development of the recreational complex to serve southern Somerset County and the Township of Hillsborough. Several focus groups of potential users and partners were held, along with public design charettes to involve the community.

Programming includes a recreation center, an outdoor family aquatic center, 8-12 baseball/softball fields, 8-12 rectangular fields, extensive walking and biking trails, BMX course, cricket pitch, game courts, picnic areas, an amphitheater, and much more. Plans also included support facilities for a regional maintenance center.



**COMPLETED**  
2010

**SIZE**  
300 acres

**COST**  
\$51 million

**ROLE**  
Master Plan

**CONTACT**  
Somerset County Park Commission  
Cindie Sullivan, Retired Deputy Director  
609.257.8456  
cindiesullivan@hotmail.com



**PETERSBURG PARK MASTER PLAN**  
Louisville, Kentucky

## PROJECT SUMMARY

Brandstetter Carroll Inc. prepared the Master Plan for this 43-acre park, 15 of which were new park acres. The process included extensive public engagement, a Cultural Assessment, Site Analysis, Alternative Concepts, and Final Master Plan. Public engagement provided the program for improvements. The recommended enhancements included the development of 12 new tennis courts for the successful tennis program at the site, new baseball and softball fields, a sprayground, new playground, walking trail loop, street plaza skate park, basketball courts, picnic area, wetland education area, and more. Six of the tennis courts, the sprayground, and new playground have been developed as a first phase.



**COMPLETED**  
2011

**SIZE**  
43 acres

**COST**  
\$5.4 million

**ROLE**  
Master Plan

**CONTACT**  
Jason Canuel, Assistant Director  
Parks and Recreation  
502.574.7275  
jason.canuel@louisvilleky.gov



**COLERAIN PARK EXPANSION**  
Colerain Township, Ohio

**PROJECT SUMMARY**

The project included a Master Plan and Construction Documents for renovations and expansion of the existing park. New facilities include an amphitheater, picnic shelters, baseball fields, trails, a boardwalk, and basketball court. The park was completed at a cost of \$1.9 million.



**COMPLETED**  
2000

**SIZE**  
29 acres

**COST**  
\$1.9 million

**ROLE**  
Master Plan  
Park Design

**CONTACT**  
Jackie O'Connell, Colerain Township  
Parks Services Department  
513.923.5000  
joconnell@colerain.org



**CLIPPARD PARK**  
Colerain Township, Ohio

## PROJECT SUMMARY

Brandstetter Carroll Inc. assisted Colerain Township in an interactive process to develop a Master Plan for this underutilized 16-acre park. Several meetings were held in the neighborhood to discuss project goals and review alternative concepts. Primary goals included attracting people to use the park to minimize negative activities and provide a neighborhood gathering place. The final solution included a variety of features including two quality baseball fields, large boundless playground, sprayground, picnic shelters, restrooms, perimeter paved walking trail, nature trail, skatepark, basketball court, and additional parking. During the process, the Township decided to acquire an additional five acres to provide improved access to the surrounding neighborhoods. Cost estimates and a phasing plan were prepared to allow for development in phases. Phase I was complete in September 2010.



**COMPLETED**  
2010

**SIZE**  
21 acres

**COST**  
\$2.4 million

**ROLE**  
Master Plan  
Park Design

**CONTACT**  
Jackie O'Connell, Colerain Township  
Parks Services Department  
513.923.5000  
joconnell@colerain.org



### PROJECT SUMMARY

Brandstetter Carroll Inc. designed the replacement of Kid's Cove Playground at Lakewood Park, the City's signature lakefront park. The playground is nestled among mature trees and includes an entry plaza, bike racks, drinking fountain, and a center plaza area connecting the Picnic Pavilion to the Restroom Building.

All new underground drainage eliminates previous ponding issues, and low tree protection walls double as seating areas.



**COMPLETED**  
2018

**SIZE**  
50,000 s.f.

**COST**  
\$1.2 million

**ROLE**  
Park Design  
Landscape  
Architecture

**CONTACT**  
Michelle Nochta, AICP, City Planner,  
City of Lakewood  
216.529.5906  
michelle.nochta@lakewoodoh.net



# WILLIAM F. MILES PARK MASTER PLAN

Louisville and Jefferson County, Kentucky

## PROJECT SUMMARY

This Master Plan was a new 130-acre park that places emphasis on habitat restoration, passive activities, and outdoor education. The plan included 6 lakes, 2 constructed wetlands, canoe launch, extensive trails, shelters, overlooks, and multi-purpose farm. The large barn was planned to be converted into an interpretive education center and the silos into observation stations. This site has since become a part of the Parklands of Floyds Fork.



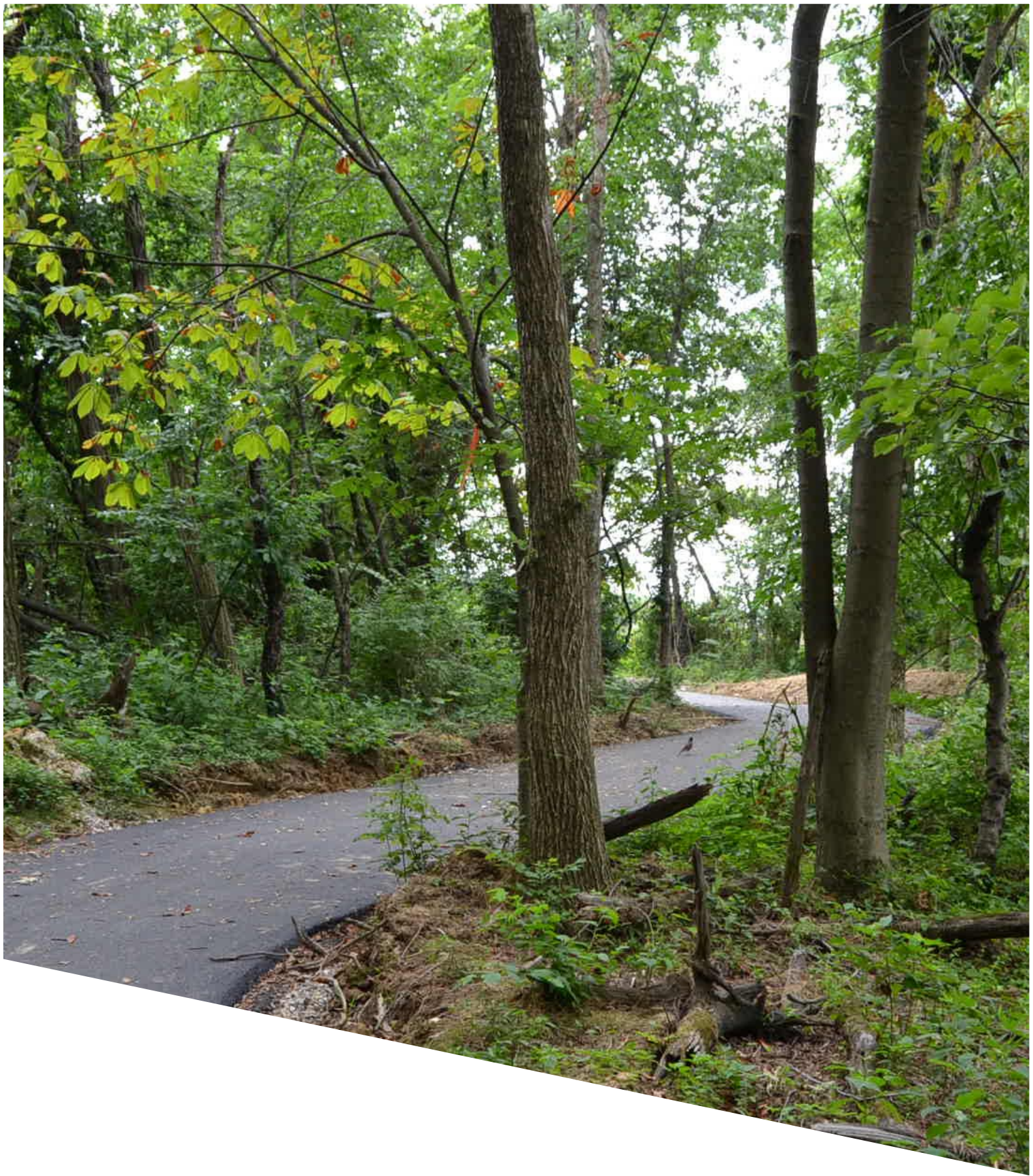
**COMPLETED**  
2000

**SIZE**  
130 acres

**COST**  
\$3.7 million

**ROLE**  
Master Plan

**CONTACT**  
Jason Canuel, Assistant Director  
Parks and Recreation  
502.574.7275  
jason.canuel@louisvilleky.gov



## SECTION IV. SCOPE OF SERVICES & FEE



# PROJECT UNDERSTANDING AND APPROACH

## PROJECT UNDERSTANDING

The City of Lexington acquired 137.6 acres of land across from Cardinal Run Park South in 1997, after Lexington Catholic High School had explored the potential of developing this property into their athletics campus, but eventually decided to develop on their current property on Clays Mill Road. BCI assisted LCHS in this effort. The LFUCG further explored possible use of the property for parks in Master Plans prepared in 1998 and a trails plan in 2009. In addition a sports complex also was explored for this property, but eventually determined it is not the best location for a tourism-based facility. Community engagement was part of the 1998 and 2009 plans, as well as in the 2018 Park and Recreation Master Plan, and this needs to be reviewed as part of this effort.

With the completion of the 2018 Parks and Recreation Master Plan (prepared by BCI), a variety of facilities were recommended for Cardinal Run Park North based upon the extensive public engagement and analysis of unmet needs in Southwest Lexington.

The LFUCG wishes to engage a team to lead the community through the process of developing a new vision for the long-term development of the park and then to provide design and construction administration services to realize the vision. The Scope of Services below outlines the steps BCI would recommend to accomplish this vision for Cardinal Run Park North.

## SCOPE OF SERVICES

### 1. Assessment Phase

#### 1. Research Phase

- a. Obtain all available records of public utilities within the rights-of-way fronting the project site.



- b. Review the plans and public engagement for the 1998 Park Master Plan by Lose Associates and the 2009 Trails Plan by Carman, as well as the 2018 Park and Recreation Master Plan by BCI. Summarize the recommendations that apply to this park.
- c. Review any other plans and reports related to the development of land use and parks in this southwest area of Lexington

## 2. Base Map

- a. Prepare a base map of the site using digital mapping provided by the LFUCG utilizing existing G.I.S. topographic data.
- b. Overlay the project boundary limits.

## 3. Site Analysis – Perform an analysis of the sites, noting such elements as:

- historical use of the site,
- existing conditions of the house and barn,
- topographic features,
- access to the overall site,
- surrounding land use,
- wind and sun orientation as it impacts park facilities,
- existing utilities in the area,
- soils based upon the Fayette County Soil Type Mapping,
- surface drainage routing,
- slopes,
- vegetation,
- zoning setbacks,
- potential educational opportunities,
- KyTC access requirements
- floodplain locations, and
- visual impact of the proposed development.

## 4. Site Analysis Summary Map – The result of this phase will be a Site Analysis Summary Map with text and an Opportunities and Constraints Map.

## 2. Engagement and Program Development Phase

- 1. **Review of Previous Meeting Summaries** – Review the documentation of the previous city-wide Parks and Recreation Master Plan and the previous park planning meetings to identify the needs for park facilities in this portion of the City.
- 2. **Master Plan Advisory Committee** – LFUCG will appoint an Advisory Committee to work with the consultant throughout the process. The committee will assist in establishing the program, evaluating alternative concepts, reviewing draft plans, and establishing priorities. The committee should include representatives of potential organizations that may use the park, Parks and Recreation Advisory Board, City Staff, City Administration, neighborhood associations, and other interested citizens.
- 3. **Public Open House** – Conduct a public open house, inviting neighbors, elected officials, staff, and interested citizens to participate in a discussion of the proposed improved parks and their features.
- 4. **MindMixer** – Use BCI's current service to develop a web page dedicated to this park to allow residents to provide their input throughout the process.

5. **Stakeholder Meetings** – Conduct a series of stakeholder meetings of current and potential park users and operators to identify specific issues, concerns, and ideas for improvements and operation. Stakeholders may include neighborhood associations, Parks and Recreation Division Staff, other City Staff, elected officials, business/corridor associations, and others.
6. **Program** – Based upon the community input recommendations, prepare a prioritized list of facilities and associated characteristics for the upgraded parks. These will include a listing and evaluation of all the potential functions and activities requested to be included at the parks. As a minimum, the park will include a maintenance facility, sports courts and fields, parking, public restrooms, shared use trails, playground(s), nature focused outdoor programming space, dog park, and picnic shelters.

### 3. **Alternative Concept Plans**

1. Prepare up to two Alternative Concept Plans of the park site showing the location and configuration of the facilities as prioritized during the Program Development Phase.
2. List the negative and positive aspects of each alternative Concept Plan.
3. Present the Alternative Concept Plans to the Advisory Committee for their review and comments.

### 4. **Preliminary Master Plan**

1. Prepare one Preliminary Master Plan that builds upon the preferred Alternative Concept Plans and further refines the specific site features. The plan will illustrate improvement locations, facility layouts, parking configurations, conceptual trail locations, and facility features.
2. Prepare a Preliminary Opinion of Probable Project Costs.
3. Prepare a series of display boards to illustrate the plan and proposed potential features with a series of sketches and photographs.
4. Present the Preliminary Master Plan to the Advisory Committee, LPARD Staff, and Park Board (75% review).

### 5. **Final Master Plan (100% Review)**

1. Prepare a minimum 30" by 40" color rendered Master Plan of the facility illustrating facility locations and interrelationships, auto and pedestrian circulation patterns, facility configurations, design features, etc.
2. Illustrate recommended stages or phases of construction.
  - a. Provide project costs for Phase 1.
  - b. Provide probable costs for remaining phases.
3. Prepare a series of graphics to illustrate the proposed features, such as the shelters, trails, playgrounds, courts, fields, and building styles using sketches and/or photographs.
4. Present the Final Master Plan to the Park and Recreation Board, City Council, and Public.

### 6. **Construction Documents Phase**

1. **Construction Documents** - Prepare the following Construction Drawings:
  - a. Existing Site Conditions Plan
  - b. Demolition Plan
  - c. Layout and Materials Plan
  - d. Stormwater and Pollution Prevention Plan
  - e. Grading Plan and Earthwork
  - f. Utility Design
  - g. Architectural Design
  - h. Construction Details for the proposed facilities that will be included

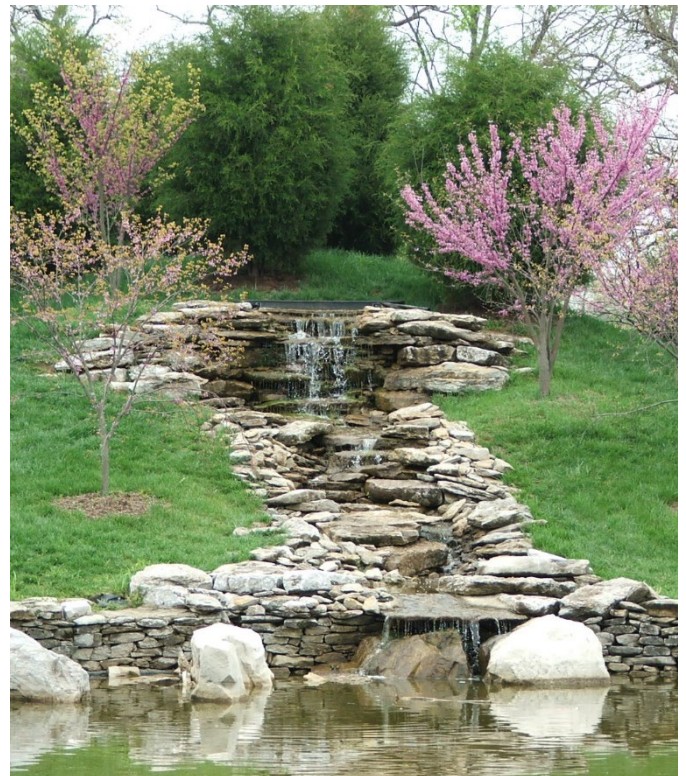
2. **City Review** – Reviews at 50%, 75%, and 100%.
3. **Preparation of Bidding and Contract** – Documents including Technical Specifications, General Requirements, Bidding Requirements, etc. The City will provide the front-end bidding documents.
4. **Permitting** – Submit documents for required permits, including, but not limited to, the entrance encroachment permit with KyTC, building permits, and permits required for site development.
5. **Review Meetings** – Conduct City reviews at 50%, 75%, and 100% of the Construction Document Phase.

## 7. Bidding and Award Phase

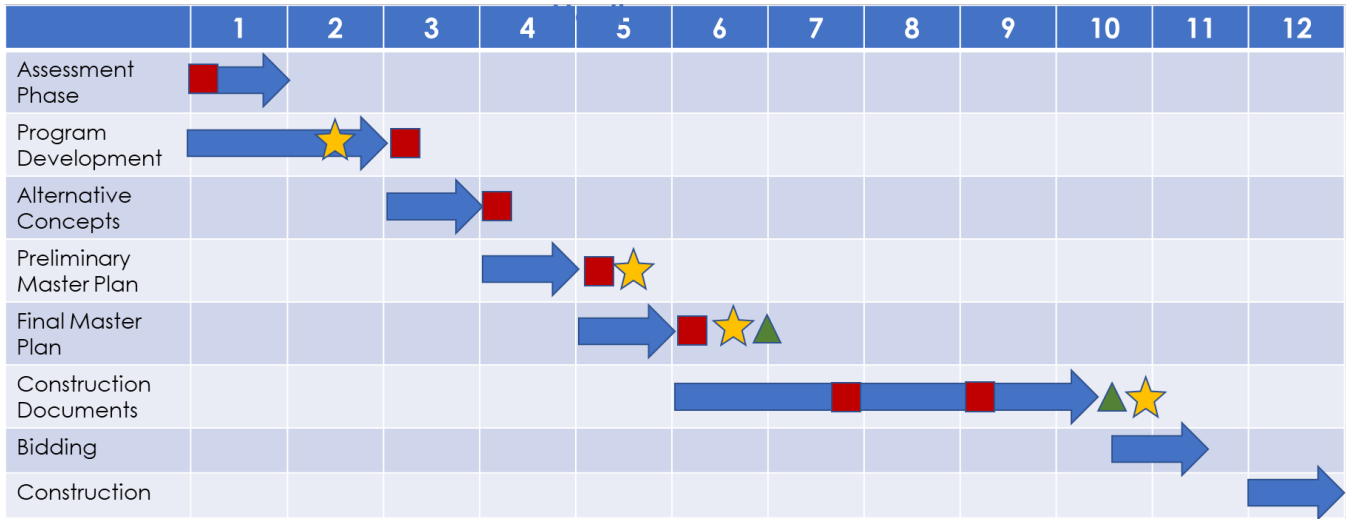
1. Assist the Owner with the bidding of the project. The bid sets will be distributed through the Consultant's office or a local blueprint service.
2. Answer potential Contractors' questions during the bidding process and issue addenda as necessary.
3. Attend the Pre-Bid Meeting.
4. Evaluate bids and make recommendations regarding the award of the Contract to the successful Contractor.

## 8. Construction Administration Services

1. Assist the owner in administration of the contract by performing the following:
  - a. Attend a pre-construction meeting with the selected contractor and city staff.
  - b. Perform bi-weekly visits to the site to observe the construction progress and to inspect the contractor's performance. This shall include a maximum of 15 visits to the site.
  - c. Attend monthly progress meetings.
  - d. Assist in obtaining necessary permits and inform utility companies of proposed improvements.
  - e. Review contractor's pay requests.
  - f. Review shop drawings and RFI's submitted by the contractor.
  - g. Consult with the contractor and the owner on problems which may arise during the course of construction and advise of needed action.
  - h. Perform final observations.
  - i. Perform a warranty review at 12 months after the substantial completion.
  - j. Coordinate the completion of Record Drawings (as-builts) by the contractor in AutoCAD and PDF formats.



## PROJECT SCHEDULE



- Advisory Committee/City Review Meeting
- ★ Public Presentation
- ▲ Council Presentation



Provide a Firm Lump Sum Cost for providing LFUCG with services as noted in these specifications.

1. Community Engagement		\$25,000.00
2. Conceptual/Schematic Design		
	50% Completion	\$ 12,000.00
	100% Completion	\$ 12,000.00
3. Design Development & Cost Estimates		
	50% Completion	\$ 100,000.00
	75% Completion	\$ 49,000.00
	100% Completion	\$ 48,000.00
4. Final Public Input		\$ 7,000.00
5. Construction Documents		
	50% Completion	\$ 150,000.00
	75% Completion	\$ 75,000.00
	100% Completion	\$ 75,000.00
6. Bidding & Negotiation		\$ 20,000.00
7. Construction Administration		\$120,000.00
8. As-built Drawings		\$ 7,000.00

**TOTAL LUMP SUM    \$ 700,000.00**

**Unit Pricing**

- a. LFUCG reserves the right to increase or decrease frequencies of unit cost i.e., each task and / or services under this agreement. If Additional Services are requested, the base contract may be increased and/or decreased on the basis of these proposed unit rates. No price adjustments will be made, unless mutually agreed to in advance or as a result of temporary conditions (defined as 30 days or less from the date of the last invoice).
- b. All Unit Pricing Hourly Rates shall include all direct labor, any supervision required, labor payroll costs, overhead (such as unemployment taxes, general liability insurance, rent, utilities, phones, supplies, administrative salaries, F.I.C.A. sick and vacations, etc.) disposal fees tool allowance, equipment, materials, profit and all other costs used on the job.

- c. Additional Services may require procurement beyond the base contract. Procurement shall comply with the specifications set forth herein. The Consultant markup over the invoiced price shall be 0%.

<u>TITLE/SKILL LEVEL</u>	<u>HOURLY RATE</u>
See next page for hourly rates for BCI.	



## BCI HOURLY RATES

Principal	\$180.00
Senior Professional Engineer	\$140.00
Senior Registered Architect	\$130.00
Senior Registered Landscape Architect	\$130.00
Senior Planner	\$120.00
Survey Crew	\$125.00
Registered Surveyor	\$120.00
Project Engineer	\$115.00
Registered Architect	\$110.00
Professional Architect	\$110.00
Landscape Architect	\$110.00
Senior Technician	\$100.00
City Planner	\$ 95.00
Engineer-in-training	\$ 85.00
Intern Architect	\$ 65.00
Intern Landscape Architect	\$ 65.00
Resident Inspector	\$ 65.00-75.00
Auto CAD/GIS Operator	\$ 65.00
Clerical	\$ 55.00



## SECTION V. FORMS



## AMERICAN RESCUE PLAN ACT

### CERTIFICATION OF COMPLIANCE FOR AMERICAN RESCUE PLAN ACT EXPENDITURES

The Lexington-Fayette Urban County Government (“LFUCG”) may classify the subject matter of this bid as an expenditure under the American Rescue Plan Act of 2021. Expenditures under the American Rescue Plan Act of 2021 require evidence of the contractor’s compliance with Federal law. Therefore, by the signature below of an authorized company representative, you certify that the information below is understood, agreed, and correct. Any misrepresentations may result in the termination of the contract and/or prosecution under applicable Federal and State laws concerning false statements and false claims.

**The bidder agrees and understands that in addition to all conditions stated within the attached bid documents, the following conditions will also apply to any Agreement entered between bidder and LFUCG, if LFUCG classifies the subject matter of this bid as an expenditure under the American Rescue Plan Act. The bidder further certifies that it can and will comply with these conditions, if this bid is accepted and an Agreement is executed:**

1. Any Agreement executed as a result of acceptance of this bid may be governed in accordance with 2 CFR Part 200 and all other applicable Federal law and regulations and guidance issued by the U.S. Department of the Treasury.
2. Pursuant to 24 CFR 85.43, any Agreement executed as a result of acceptance of this bid can be terminated if the contractor fails to comply with any term of the award. This Agreement may be terminated for convenience in accordance with 24 CFR 85.44 upon written notice by LFUCG. Either party may terminate this Agreement with thirty (30) days written notice to the other party, in which case the Agreement shall terminate on the thirtieth day. In the event of termination, the contractor shall be entitled to that portion of total compensation due under this Agreement as the services rendered bears to the services required. Either party may terminate this Agreement for good cause shown with forty-five (45) days written notice, which shall explain the party’s cause for the termination. If the parties do not reach a settlement before the end of the 45 days, then the Agreement shall terminate on the forty-fifth day.
3. The contractor will not discriminate against any employee or applicant for employment because of race, color, religion, sex, sexual orientation, gender identity, or national origin. The contractor will take affirmative action to ensure that applicants are employed and that employees are treated during employment without regard to their race, color, religion, sex, sexual orientation, gender identity, or national origin. Such action shall include, but not be limited to the following:
  - (1) Employment, upgrading, demotion, or transfer; recruitment or recruitment advertising; layoff or termination; rates of pay or other forms of compensation; and selection for training, including apprenticeship. The contractor agrees to post in conspicuous places, available to employees and applicants for employment, notices to be provided setting forth the provisions of this nondiscrimination clause.
  - (2) The contractor will, in all solicitations or advertisements for employees placed by or on behalf of the contractor, state that all qualified applicants will receive consideration for employment without regard to race, color, religion, sex, sexual orientation, gender identity, or national origin.
  - (3) The contractor will not discharge or in any other manner discriminate against any employee or applicant for employment because such employee or applicant has inquired about, discussed, or disclosed the compensation of the employee or applicant or another employee or applicant. This provision shall not apply to instances in which an employee who has access to the compensation information of other employees or applicants as a part of such employee's essential job functions discloses the compensation of such other employees or applicants to individuals who do not otherwise have access to such information, unless such disclosure is in response to a formal complaint or charge, in furtherance of an

investigation, proceeding, hearing, or action, including an investigation conducted by the employer, or is consistent with the contractor's legal duty to furnish information.

- (4) The contractor will send to each labor union or representative of workers with which he has a collective bargaining agreement or other contract or understanding a notice to be provided advising the said labor union or workers' representatives of the contractor's commitments under this section and shall post copies of the notice in conspicuous places available to employees and applicants for employment.
- (5) The contractor will comply with all provisions of Executive Order 11246 of September 24, 1965, and of the rules, regulations, and relevant orders of the Secretary of Labor.
- (6) The contractor will furnish all information and reports required by Executive Order 11246 of September 24, 1965, and by rules, regulations, and orders of the Secretary of Labor, or pursuant thereto, and will permit access to his books, records, and accounts by the administering agency and the Secretary of Labor for purposes of investigation to ascertain compliance with such rules, regulations, and orders.
- (7) In the event of the contractor's noncompliance with the nondiscrimination clauses of this contract or with any of the said rules, regulations, or orders, this contract may be canceled, terminated, or suspended in whole or in part, and the contractor may be declared ineligible for further government contracts or federally assisted construction contracts in accordance with procedures authorized in Executive Order 11246 of September 24, 1965, and such other sanctions may be imposed and remedies invoked as provided in Executive Order 11246 of September 24, 1965, or by rule, regulation, or order of the Secretary of Labor, or as otherwise provided by law.
- (8) The contractor will include the portion of the sentence immediately preceding paragraph (1) and the provisions of paragraphs (1) through (8) in every subcontract or purchase order unless exempted by rules, regulations, or orders of the Secretary of Labor issued pursuant to section 204 of Executive Order 11246 of September 24, 1965, so that such provisions will be binding upon each subcontractor or vendor. The contractor will take such action with respect to any subcontract or purchase order as the administering agency may direct as a means of enforcing such provisions, including sanctions for noncompliance.

Provided, however, that in the event a contractor becomes involved in or is threatened with litigation with a subcontractor or vendor as a result of such direction by the administering agency, the contractor may request the United States to enter into such litigation to protect the interests of the United States.

4. If fulfillment of the contract requires the contractor to employ mechanic's or laborers, the contractor further agrees that it can and will comply with the following:

- (1) *Overtime requirements: No contractor or subcontractor contracting for any part of the contract work which may require or involve the employment of laborers or mechanics shall require or permit any such laborer or mechanic in any workweek in which he or she is employed on such work to work in excess of forty hours in such a workweek unless such laborer or mechanic receives compensation at a rate not less than one and one-half times the basic rate of pay for all hours worked in excess of forty hours in such a workweek.*
- (2) *Violation: liability for unpaid wages; liquidated damages. In the event of any violation of the clause set forth in paragraph (1) of this section, the contractor and any subcontractor responsible therefor shall be liable for the unpaid wages. In addition, such contractor and subcontractor shall be liable to the United States (in the case of work done under contract for the District of Columbia or a territory, to such District or to such territory) for liquidated damages. Such liquidated damages shall be computed with respect to each individual laborer or mechanic, including watchmen and guards, employed in violation of the clause set forth in paragraph (1) of this section, in the sum of \$10 for each calendar day on which such individual was required or permitted to work in excess of the standard workweek of forty hours without payment of the overtime wages required by the clause set forth in paragraph (1) of this section.*
- (3) *Withholding for unpaid wages and liquidated damages. LFUCG shall upon its own action or upon written request of an authorized representative of the Department of Labor withhold or cause to be*

*withheld, from any moneys payable on account of work performed by the contractor or subcontractor under any such contract or any other federal contract with the same prime contractor, or any other federally-assisted contract subject to the Contract Work Hours and Safety Standards Act, which is held by the same prime contractor, such sums as may be determined to be necessary to satisfy any liabilities of such contractor or subcontractor for unpaid wages and liquidated damages as provided in the clause set forth in paragraph (2) of this section.*

*(4) Subcontracts. The contractor or subcontractor shall insert in any subcontracts the clauses set forth in paragraph (1) through (4) of this section and also a clause requiring the subcontractors to include these clauses in any lower-tier subcontracts. The prime contractor shall be responsible for compliance by any subcontractor or lower-tier subcontractor with the clauses set forth in paragraphs (1) through (4) of this section.*

*5. The contractor shall comply with all applicable standards, orders, or regulations issued pursuant to the Clean Air Act, as amended, 42 U.S.C. § 7401 et seq.*

*6. The contractor shall report each violation to LFUCG and understands and agrees that LFUCG will, in turn, report each violation as required to assure notification to the Treasury Department and the appropriate Environmental Protection Agency Regional Office.*

*7. The contractor shall include these requirements in numerical paragraphs 5 and 6 in each subcontract exceeding \$100,000 financed in whole or in part with American Rescue Plan Act funding.*

*8. The contractor shall comply with all applicable standards, orders, or regulations issued pursuant to the Federal Water Pollution Control Act, as amended, 33 U.S.C. 1251 et seq.*

*9. The contractor shall report each violation to LFUCG and understands and agrees that LFUCG will, in turn, report each violation as required to assure notification to the Treasury Department and the appropriate Environmental Protection Agency Regional Office.*

*10. The contractor shall include these requirements in numerical paragraphs 8 and 9 in each subcontract exceeding \$100,000 financed in whole or in part with American Rescue Plan Act funds.*

*11. The contractor shall comply with all applicable standards, orders, or regulations issued pursuant to the Federal Water Pollution Control Act, as amended, 33 U.S.C. 1251 et seq.*

*12. The contractor shall report each violation to LFUCG and understands and agrees that LFUCG will, in turn, report each violation as required to assure notification to the Treasury Department and the appropriate Environmental Protection Agency regional office.*

*13. The contractor shall include these requirements in numerical paragraphs 11 and 12 in each subcontract exceeding \$100,000 financed in whole or in part with American Rescue Plan Act funds.*

*14. The contractor shall include this language in any subcontract it executes to fulfill the terms of this bid: “the sub-grantee, contractor, subcontractor, successor, transferee, and assignee shall comply with Title VI of the Civil Rights Act of 1964, which prohibits recipients of federal financial assistance from excluding from a program or activity, denying benefits of, or otherwise discriminating against a person on the basis of race, color, or national origin (42 U.S.C. § 2000d et seq.), as implemented by the Department of the Treasury’s Title VI regulations, 31 CFR Part 22, which are herein incorporated by reference and made a part of this contract (or agreement). Title VI also includes protection to persons with ‘Limited English Proficiency’ in any program or activity receiving federal financial assistance, 42 U.S.C. § 2000d et seq., as implemented by the Department of the Treasury’s Title VI regulations, 31 CFR Part 22, and herein incorporated by reference and made a part of this contract or agreement.”*

15. Contractors who apply or bid for an award of \$100,000 or more shall file the required certification that it will not and has not used federal appropriated funds to pay any person or organization for influencing or attempting to influence an officer or employee of any agency. Each tier certifies to the tier above that it will not and has not used federal appropriated funds to pay any person or organization for influencing or attempting to influence an officer or employee of any agency, a member of Congress, officer or employee of Congress, or an employee of a member of Congress in connection with obtaining any federal contract, grant, or any other award covered by 31 U.S.C. § 1352. Each tier shall also disclose any lobbying with non-federal funds that takes place in connection with obtaining any federal award. Such disclosures are forwarded from tier to tier, up to the recipient. The required certification is included here:

- a. The undersigned certifies, to the best of his or her knowledge and belief, that:
  - (1) No Federal appropriated funds have been paid or will be paid, by or on behalf of the undersigned, to any person for influencing or attempting to influence an officer or employee of an agency, a Member of Congress, an officer or employee of Congress, or an employee of a Member of Congress in connection with the awarding of any Federal contract, the making of any Federal grant, the making of any Federal loan, the entering into of any cooperative agreement, and the extension, continuation, renewal, amendment, or modification of any Federal contract, grant, loan, or cooperative agreement.
  - (2) If any funds other than Federal appropriated funds have been paid or will be paid to any person for influencing or attempting to influence an officer or employee of any agency, a Member of Congress, an officer or employee of Congress, or an employee of a Member of Congress in connection with this Federal contract, grant, loan, or cooperative agreement, the undersigned shall complete and submit Standard Form-LLL, "Disclosure Form to Report Lobbying," in accordance with its instructions.
  - (3) The undersigned shall require that the language of this certification be included in the award documents for all subawards at all tiers (including subcontracts, subgrants, and contracts under grants, loans, and cooperative agreements) and that all subrecipients shall certify and disclose accordingly.
- b. This certification is a material representation of fact upon which reliance was placed when this transaction was made or entered into. Submission of this certification is a prerequisite for making or entering into this transaction imposed by section 1352, title 31, U.S. Code. Any person who fails to file the required certification shall be subject to a civil penalty of not less than \$10,000 and not more than \$100,000 for each such failure.



Signature

April 13, 2022

Date

**AFFIDAVIT**

Comes the Affiant, Benjamin E. Brandstetter, P.E., and after being first duly sworn, states under penalty of perjury as follows:

1. His/her name is Benjamin E. Brandstetter, P.E. and he/she is the individual submitting the proposal or is the authorized representative of Brandstetter Carro II Inc., the entity submitting the proposal (hereinafter referred to as "Proposer").

2. Proposer will pay all taxes and fees, which are owed to the Lexington-Fayette Urban County Government at the time the proposal is submitted, prior to award of the contract and will maintain a "current" status in regard to those taxes and fees during the life of the contract.

3. Proposer will obtain a Lexington-Fayette Urban County Government business license, if applicable, prior to award of the contract.

4. Proposer has authorized the Division of Central Purchasing to verify the above-mentioned information with the Division of Revenue and to disclose to the Urban County Council that taxes and/or fees are delinquent or that a business license has not been obtained.

5. Proposer has not knowingly violated any provision of the campaign finance laws of the Commonwealth of Kentucky within the past five (5) years and the award of a contract to the Proposer will not violate any provision of the campaign finance laws of the Commonwealth.

6. Proposer has not knowingly violated any provision of Chapter 25 of the Lexington-Fayette Urban County Government Code of Ordinances, known as "Ethics Act."

**Continued on next page**

7. Proposer acknowledges that "knowingly" for purposes of this Affidavit means, with respect to conduct or to circumstances described by a statute or ordinance defining an offense, that a person is aware or should have been aware that his conduct is of that nature or that the circumstance exists.


Further, Affiant sayeth naught.

Benjamin E. Brandstetter, P.E., President

STATE OF Kentucky

COUNTY OF Fayette

The foregoing instrument was subscribed, sworn to and acknowledged before me

by  on this the 13th day of April, 2022.

My Commission expires: Aug 9, 2024

  
NOTARY PUBLIC, STATE AT LARGE

**Lynda F. Gates**  
NOTARY PUBLIC  
STATE AT LARGE  
KENTUCKY  
NOTARY ID# KYNP9703  
MY COMMISSION EXPIRES August 9, 2024

# EQUAL OPPORTUNITY AGREEMENT

## Standard Title VI Assurance

The Lexington Fayette-Urban County Government, (hereinafter referred to as the "Recipient") hereby agrees that as a condition to receiving any Federal financial assistance from the U.S. Department of Transportation, it will comply with Title VI of the Civil Rights Act of 1964, 78Stat.252, 42 U.S.C. 2000d-4 (hereinafter referred to as the "Act"), and all requirements imposed by or pursuant to Title 49, Code of Federal Regulations, U.S. Department of Transportation, Subtitle A, Office of the Secretary, (49 CFR, Part 21) Nondiscrimination in Federally Assisted Program of the Department of Transportation – Effectuation of Title VI of the Civil Rights Act of 1964 (hereinafter referred to as the "Regulations") and other pertinent directives, no person in the United States shall, on the grounds of race, color, national origin, sex, age (over 40), religion, sexual orientation, gender identity, veteran status, or disability be excluded from participation in, be denied the benefits of, or be otherwise subjected to discrimination under any program or activity for which the Recipient receives Federal financial assistance from the U.S. Department of Transportation, including the Federal Highway Administration, and hereby gives assurance that will promptly take any necessary measures to effectuate this agreement. This assurance is required by subsection 21.7(a) (1) of the Regulations.

## The Law

- Title VII of the Civil Rights Act of 1964 (amended 1972) states that it is unlawful for an employer to discriminate in employment because of race, color, religion, sex, age (40-70 years) or national origin.
- Executive Order No. 11246 on Nondiscrimination under Federal contract prohibits employment discrimination by contractor and sub-contractor doing business with the Federal Government or recipients of Federal funds. This order was later amended by Executive Order No. 11375 to prohibit discrimination on the basis of sex.
- Section 503 of the Rehabilitation Act of 1973 states:

*The Contractor will not discriminate against any employee or applicant for employment because of physical or mental handicap.*

- Section 2012 of the Vietnam Era Veterans Readjustment Act of 1973 requires Affirmative Action on behalf of disabled veterans and veterans of the Vietnam Era by contractors having Federal contracts.
- Section 206(A) of Executive Order 12086, Consolidation of Contract Compliance Functions for Equal Employment Opportunity, states:

*The Secretary of Labor may investigate the employment practices of any Government contractor or sub-contractor to determine whether or not the contractual provisions specified in Section 202 of this order have been violated.*


\*\*\*\*\*

The Lexington-Fayette Urban County Government practices Equal Opportunity in recruiting, hiring and promoting. It is the Government's intent to affirmatively provide employment opportunities for those individuals who have previously not been allowed to enter into the mainstream of society. Because of its importance to the local Government, this policy carries the full endorsement of the Mayor, Commissioners, Directors and all supervisory personnel. In following this commitment to Equal Employment Opportunity and because the Government is the benefactor of the Federal funds, it is both against the Urban County Government policy and illegal for the Government to let contracts to companies which knowingly or unknowingly practice discrimination in their employment practices. Violation of the above mentioned ordinances may cause a contract to be canceled and the contractors may be declared ineligible for future consideration.

Please sign this statement in the appropriate space acknowledging that you have read and understand the provisions contained herein. Return this document as part of your application packet.

Bidders

*I/We agree to comply with the Civil Rights Laws listed above that govern employment rights of minorities, women, Vietnam veterans, handicapped and aged persons.*

  
\_\_\_\_\_  
Signature

Brandstetter Carroll Inc.  
\_\_\_\_\_  
Name of Business



**WORKFORCE ANALYSIS FORM**

Name of Organization: Brandstetter Carroll Inc.

Categories	Total	White (Not Hispanic or Latino)		Hispanic or Latino		Black or African- American (Not Hispanic or Latino)		Native Hawaiian and Other Pacific Islander (Not Hispanic or Latino)		Asian (Not Hispanic or Latino)		American Indian or Alaskan Native (not Hispanic or Latino)		Two or more races (Not Hispanic or Latino)		Total	
		M	F	M	F	M	F	M	F	M	F	M	F	M	F	M	F
<b>Administrators</b>		1	1													1	1
<b>Professionals</b>		12	6							1						13	6
<b>Superintendents</b>																	
<b>Supervisors</b>																	
<b>Foremen</b>																	
<b>Technicians</b>																	
<b>Protective</b>																	
<b>Para-</b>																	
<b>Office/Clerical</b>		27	19							1						28	19
<b>Skilled Craft</b>																	
<b>Service/Maintena</b>																	
<b>Total:</b>		40	26							2						42	26

Prepared by: Benjamin E. Brandstetter, P.E., President Date: 04 / 13 / 2022

*(Name and Title)*

*Revised 2015-Dec-15*

Firm Submitting Proposal: Brandstetter Carroll Inc.

Complete Address: 2360 Chauvin Drive, Lexington, Kentucky 40517  
Street City Zip

Contact Name: Benjamin E. Brandstetter, P.E. Title: President

Telephone Number: 859.268.1933 Fax Number: 859.268.3341

Email address: ben@bciaep.com

## **AFFIRMATIVE ACTION POLICY**

Brandstetter Carroll Inc. recognizes its responsibility to provide equal employment opportunities to members of minority groups and, consequently, has developed a written Affirmative Action Program. Brandstetter Carroll Inc. will take affirmative action and eliminate discrimination to assure minorities' equal opportunity. An increased effort will be made to inform employees and community groups of the firm's EEO Policy so the utilization of minorities can be increased throughout the firm. At appropriate intervals, Brandstetter Carroll Inc. will revise and update this Affirmative Action Program to set new goals and objectives so the firm's EEO Policy can be furthered in the future.

## **EQUAL EMPLOYMENT POLICY STATEMENT**

It is the policy of Brandstetter Carroll Inc. to provide equal opportunity employment to all qualified employees and applicants for employment without regard to race, creed, color, sex, age, religion, national origin, physical or mental handicap, or veteran status. Consequently, Brandstetter Carroll Inc. will recruit, hire, and promote all employees without discrimination because of race, creed, color, sex, age, religion, national origin, physical or mental handicap, or veteran status, and will treat all employees equally in regard to compensation, advancement, upgrading, promotion, and transfers. Decisions regarding employment will be based solely upon the qualifications and seniority as related to the requirements of the position for which the individual is being considered. This policy will ensure all personnel actions such as compensation, dismissals, transfers, firm-sponsored training, benefits, education, and tuition assistance programs will be administered without regard to race, creed, color, sex, age, religion, national origin, physical or mental handicap, or veteran status. Brandstetter Carroll Inc. agrees to assist leadership within the community to achieve full employment and utilization of the capabilities and productivity of citizens without regard to race, creed, color, sex, age, religion, national origin, physical or mental handicap, or veteran status. The Company also will take affirmative action to make known equal employment opportunities exist within Brandstetter Carroll Inc. and to encourage persons to seek employment with this firm and strive for advancement.

## **OBLIGATION OF BIDDER FOR GOOD FAITH EFFORTS**

Requirement:

The bidder shall make a Good Faith Effort to achieve the Participation Goal for MWDBE and Veteran-Owned subcontractors/suppliers. The failure to meet the goal shall not necessarily be cause for disqualification of the bidder; however, bidders not meeting the goal are required to furnish with their bids written documentation of their Good Faith Efforts to do so.

## **OUTCOME/GOOD FAITH:**

Brandstetter Carroll Inc. was unable to secure a Veteran-owned business for the project. After reviewing the LFUCG list of Veteran providers, there was no subcontractor that fit the required needs of the Cardinal Run Park North – New Community Park project.



**LFUCG MWDBE PARTICIPATION FORM**

**Bid/RFP/Quote Reference #** \_\_\_\_\_ **20-2022** \_\_\_\_\_

The MWDBE and/or veteran subcontractors listed have agreed to participate on this Bid/RFP/Quote. If any substitution is made or the total value of the work is changed prior to or after the job is in progress, it is understood that those substitutions must be submitted to Central Purchasing for approval immediately. **Failure to submit a completed form may cause rejection of the bid.**

MWDBE Company, Name, Address, Phone, Email	MBE WBE or DBE	Work to be Performed	Total Dollar Value of the Work	% Value of Total Contract
1. Abbie Jones Consulting Abbie Jones 1022 Fontaine Road Lexington, Kentucky 40502 859.559.3443 abbie@abbie-jones.com	WBE	Civil Engineering	\$35,000.00	5%
2. EHI Consultants Ed Holmes 333 W. Vine Street, Suite 300 Lexington, Kentucky 40507 859.425.4881 holmes@ehiconsultants.com	MBE	Engagement	\$35,000.00	5%
3.				
4.				

The undersigned company representative submits the above list of MWDBE firms to be used in accomplishing the work contained in this Bid/RFP/Quote. Any misrepresentation may result in the termination of the contract and/or be subject to applicable Federal and State laws concerning false statements and false claims.

Brandstetter Carroll Inc. \_\_\_\_\_

**Company**

April 13, 2022 \_\_\_\_\_

**Date**

Benjamin E. Brandstetter, P.E. \_\_\_\_\_

**Company Representative**

President \_\_\_\_\_

**Title**



**MWDBE QUOTE SUMMARY FORM**  
**Bid/RFP/Quote Reference # 20-2022**

The undersigned acknowledges that the minority and/or veteran subcontractors listed on this form did submit a quote to participate on this project. Failure to submit this form may cause rejection of the bid.

<b>Company Name</b> Brandstetter Carroll Inc.	<b>Contact Person</b> Benjamin E. Brandstetter, P.E., President
<b>Address/Phone/Email</b> 2360 Chauvin Drive, Lexington, Kentucky 40517 859.268.1933 ben@bciaep.com	<b>Bid Package / Bid Date</b> 20-2022 April 19, 2022

MWDBE Company Address	Contact Person	Contact Information (work phone, Email, cell)	Date Contacted	Services to be performed	Method of Communication (email, phone meeting, ad, event etc)	Total dollars \$\$ Do Not Leave Blank (Attach Documentation)	MBE * AA HA AS NA Female	Veteran
EHI Consulting 333 W. Vine Street Lexington, KY 40507	Ed Holmes	859-425-4881 Holmes@ehiconsultants.com	04-08-2022	Community Engagement	Email	\$35,000	MBE	
Abbie Jones Consulting 1022 Fontaine Road Lexington, KY 40502	Abbie Jones	859-559-3443 sbbie@abbie-jones.com	04-13-2022	Civil Engineering	Email	\$35,000	WOSB WBE	

(MBE designation / AA=African American / HA= Hispanic American/AS = Asian American/Pacific Islander/ NA= Native American)

The undersigned acknowledges that all information is accurate. Any misrepresentation may result in termination of the contract and/or be subject to applicable Federal and State laws concerning false statements and claims.

Brandstetter Carroll Inc.  
 \_\_\_\_\_  
**Company**  
 April 15, 2022  
 \_\_\_\_\_  
**Date**

Benjamin E. Brandstetter, P.E.  
 \_\_\_\_\_  
**Company Representative**  
 President  
 \_\_\_\_\_  
**Title**

**LFUCG STATEMENT OF GOOD FAITH EFFORTS**

**Bid/RFP/Quote # 20-2022**

By the signature below of an authorized company representative, we certify that we have utilized the following Good Faith Efforts to obtain the maximum participation by MWDBE and Veteran-Owned business enterprises on the project and can supply the appropriate documentation.

\_\_\_\_\_ Advertised opportunities to participate in the contract in at least two (2) publications of general circulation media; trade and professional association publications; small and minority business or trade publications; and publications or trades targeting minority, women and disadvantaged businesses not less than fifteen (15) days prior to the deadline for submission of bids to allow MWDBE firms and Veteran-Owned businesses to participate.

\_\_\_\_\_ Included documentation of advertising in the above publications with the bidders good faith efforts package

\_\_\_\_\_ Attended LFUCG Central Purchasing Economic Inclusion Outreach event

\_\_\_\_\_ Attended pre-bid meetings that were scheduled by LFUCG to inform MWDBEs and/or Veteran-Owned Businesses of subcontracting opportunities

\_\_\_\_\_ Sponsored Economic Inclusion event to provide networking opportunities for prime contractors and MWDBE firms and Veteran-Owned businesses

\_\_\_\_\_ Requested a list of MWDBE and/or Veteran subcontractors or suppliers from LFUCG and showed evidence of contacting the companies on the list(s).

\_\_\_\_\_ Contacted organizations that work with MWDBE companies for assistance in finding certified MWDBE firms and Veteran-Owned businesses to work on this project. Those contacted and their responses should be a part of the bidder's good faith efforts documentation.

\_\_\_\_\_ Sent written notices, by certified mail, email or facsimile, to qualified, certified MWDBEs soliciting their participation in the contract not less than seven (7) days prior to the deadline for submission of bids to allow them to participate effectively.

\_\_\_\_\_ Followed up initial solicitations by contacting MWDBEs and Veteran-Owned businesses to determine their level of interest.

\_\_\_\_\_ Provided the interested MWDBE firm and/or Veteran-Owned business with adequate and timely information about the plans, specifications, and requirements of the contract.

\_\_\_\_\_ Selected portions of the work to be performed by MWDBE firms and/or Veteran-Owned businesses in order to increase the likelihood of meeting the contract goals. This includes, where appropriate, breaking out contract work items

into economically feasible units to facilitate MWDBE and Veteran participation, even when the prime contractor may otherwise perform these work items with its own workforce

\_\_\_\_\_ Negotiated in good faith with interested MWDBE firms and Veteran-Owned businesses not rejecting them as unqualified without sound reasons based on a thorough investigation of their capabilities. Any rejection should be so noted in writing with a description as to why an agreement could not be reached.

\_\_\_\_\_ Included documentation of quotations received from interested MWDBE firms and Veteran-Owned businesses which were not used due to uncompetitive pricing or were rejected as unacceptable and/or copies of responses from firms indicating that they would not be submitting a bid.

\_\_\_\_\_ Bidder has to submit sound reasons why the quotations were considered unacceptable. The fact that the bidder has the ability and/or desire to perform the contract work with its own forces will not be considered a sound reason for rejecting a MWDBE and/or Veteran-Owned business's quote. Nothing in this provision shall be construed to require the bidder to accept unreasonable quotes in order to satisfy MWDBE and Veteran goals.

\_\_\_\_\_ Made an effort to offer assistance to or refer interested MWDBE firms and Veteran-Owned businesses to obtain the necessary equipment, supplies, materials, insurance and/or bonding to satisfy the work requirements of the bid proposal

\_\_\_\_\_ Made efforts to expand the search for MWBE firms and Veteran-Owned businesses beyond the usual geographic boundaries.

**BEB** Other--any other evidence that the bidder submits which may show that the bidder has made reasonable good faith efforts to include MWDBE and Veteran participation.

**NOTE: Failure to submit any of the documentation requested in this section may be cause for rejection of bid. Bidders may include any other documentation deemed relevant to this requirement which is subject to approval by the MBE Liaison. Documentation of Good Faith Efforts must be submitted with the Bid, if the participation Goal is not met.**

The undersigned acknowledges that all information is accurate. Any misrepresentations may result in termination of the contract and/or be subject to applicable Federal and State laws concerning false statements and claims.

Brandstetter Carroll Inc.  
Company  
April 13, 2022  
Date

Benjamin E. Brandstetter, P.E.  
Company Representative  
President  
Title

## **GENERAL PROVISIONS**

1. Each Respondent shall comply with all Federal, State & Local regulations concerning this type of service or good.

The Respondent agrees to comply with all statutes, rules, and regulations governing safe and healthful working conditions, including the Occupational Health and Safety Act of 1970, *29 U.S.C. 650 et. seq.*, as amended, and KRS Chapter 338. The Respondent also agrees to notify the LFUCG in writing immediately upon detection of any unsafe and/or unhealthful working conditions at the job site. The Respondent agrees to indemnify, defend and hold the LFUCG harmless from all penalties, fines or other expenses arising out of the alleged violation of said laws.

2. Failure to submit ALL forms and information required in this RFP may be grounds for disqualification.
3. Addenda: All addenda and IonWave Q&A, if any, shall be considered in making the proposal, and such addenda shall be made a part of this RFP. Before submitting a proposal, it is incumbent upon each proposer to be informed as to whether any addenda have been issued, and the failure to cover in the bid any such addenda may result in disqualification of that proposal.
4. Proposal Reservations: LFUCG reserves the right to reject any or all proposals, to award in whole or part, and to waive minor immaterial defects in proposals. LFUCG may consider any alternative proposal that meets its basic needs.
5. Liability: LFUCG is not responsible for any cost incurred by a Respondent in the preparation of proposals.
6. Changes/Alterations: Respondent may change or withdraw a proposal at any time prior to the opening; however, no oral modifications will be allowed. Only letters, or other formal written requests for modifications or corrections of a previously submitted proposal which is addressed in the same manner as the proposal, and received by LFUCG prior to the scheduled closing time for receipt of proposals, will be accepted. The proposal, when opened, will then be corrected in accordance with such written request(s), provided that the written request is contained in a sealed envelope which is plainly marked "modifications of proposal".
7. Clarification of Submittal: LFUCG reserves the right to obtain clarification of any point in a bid or to obtain additional information from a Respondent.
8. Bribery Clause: By his/her signature on the bid, Respondent certifies that no employee of his/hers, any affiliate or Subcontractor, has bribed or attempted to bribe an officer or employee of the LFUCG.



9. Additional Information: While not necessary, the Respondent may include any product brochures, software documentation, sample reports, or other documentation that may assist LFUCG in better understanding and evaluating the Respondent's response. Additional documentation shall not serve as a substitute for other documentation which is required by this RFP to be submitted with the proposal,
10. Ambiguity, Conflict or other Errors in RFP: If a Respondent discovers any ambiguity, conflict, discrepancy, omission or other error in the RFP, it shall immediately notify LFUCG of such error in writing and request modification or clarification of the document if allowable by the LFUCG.
11. Agreement to Bid Terms: In submitting this proposal, the Respondent agrees that it has carefully examined the specifications and all provisions relating to the work to be done attached hereto and made part of this proposal. By acceptance of a Contract under this RFP, proposer states that it understands the meaning, intent and requirements of the RFP and agrees to the same. The successful Respondent shall warrant that it is familiar with and understands all provisions herein and shall warrant that it can comply with them. No additional compensation to Respondent shall be authorized for services or expenses reasonably covered under these provisions that the proposer omits from its Proposal.
12. Cancellation: If the services to be performed hereunder by the Respondent are not performed in an acceptable manner to the LFUCG, the LFUCG may cancel this contract for cause by providing written notice to the proposer, giving at least thirty (30) days notice of the proposed cancellation and the reasons for same. During that time period, the proposer may seek to bring the performance of services hereunder to a level that is acceptable to the LFUCG, and the LFUCG may rescind the cancellation if such action is in its best interest.

A. Termination for Cause

- (1) LFUCG may terminate a contract because of the contractor's failure to perform its contractual duties
- (2) If a contractor is determined to be in default, LFUCG shall notify the contractor of the determination in writing, and may include a specified date by which the contractor shall cure the identified deficiencies. LFUCG may proceed with termination if the contractor fails to cure the deficiencies within the specified time.
- (3) A default in performance by a contractor for which a contract may be terminated shall include, but shall not necessarily be limited to:
  - (a) Failure to perform the contract according to its terms, conditions and specifications;
  - (b) Failure to make delivery within the time specified or according

- to a delivery schedule fixed by the contract;
- (c) Late payment or nonpayment of bills for labor, materials, supplies, or equipment furnished in connection with a contract for construction services as evidenced by mechanics' liens filed pursuant to the provisions of KRS Chapter 376, or letters of indebtedness received from creditors by the purchasing agency;
- (d) Failure to diligently advance the work under a contract for construction services;
- (e) The filing of a bankruptcy petition by or against the contractor; or
- (f) Actions that endanger the health, safety or welfare of the LFUCG or its citizens.

#### B. At Will Termination

Notwithstanding the above provisions, the LFUCG may terminate this contract at will in accordance with the law upon providing thirty (30) days written notice of that intent, Payment for services or goods received prior to termination shall be made by the LFUCG provided these goods or services were provided in a manner acceptable to the LFUCG. Payment for those goods and services shall not be unreasonably withheld.

13. **Assignment of Contract:** The contractor shall not assign or subcontract any portion of the Contract without the express written consent of LFUCG. Any purported assignment or subcontract in violation hereof shall be void. It is expressly acknowledged that LFUCG shall never be required or obligated to consent to any request for assignment or subcontract; and further that such refusal to consent can be for any or no reason, fully within the sole discretion of LFUCG.
14. **No Waiver:** No failure or delay by LFUCG in exercising any right, remedy, power or privilege hereunder, nor any single or partial exercise thereof, nor the exercise of any other right, remedy, power or privilege shall operate as a waiver hereof or thereof. No failure or delay by LFUCG in exercising any right, remedy, power or privilege under or in respect of this Contract shall affect the rights, remedies, powers or privileges of LFUCG hereunder or shall operate as a waiver thereof.
15. **Authority to do Business:** The Respondent must be a duly organized and authorized to do business under the laws of Kentucky. Respondent must be in good standing and have full legal capacity to provide the services specified under this Contract. The Respondent must have all necessary right and lawful authority to enter into this Contract for the full term hereof and that proper corporate or other action has been duly taken authorizing the Respondent to enter into this Contract. The Respondent will provide LFUCG with a copy of a corporate resolution authorizing this action and a letter from an attorney confirming that the proposer is authorized to do business in the State of Kentucky if requested. All proposals must

be signed by a duly authorized officer, agent or employee of the Respondent.

16. **Governing Law:** This Contract shall be governed by and construed in accordance with the laws of the Commonwealth of Kentucky. In the event of any proceedings regarding this Contract, the Parties agree that the venue shall be the Fayette County Circuit Court or the U.S. District Court for the Eastern District of Kentucky, Lexington Division. All parties expressly consent to personal jurisdiction and venue in such Court for the limited and sole purpose of proceedings relating to this Contract or any rights or obligations arising thereunder. Service of process may be accomplished by following the procedures prescribed by law.
17. **Ability to Meet Obligations:** Respondent affirmatively states that there are no actions, suits or proceedings of any kind pending against Respondent or, to the knowledge of the Respondent, threatened against the Respondent before or by any court, governmental body or agency or other tribunal or authority which would, if adversely determined, have a materially adverse effect on the authority or ability of Respondent to perform its obligations under this Contract, or which question the legality, validity or enforceability hereof or thereof.
18. Contractor understands and agrees that its employees, agents, or subcontractors are not employees of LFUCG for any purpose whatsoever. Contractor is an independent contractor at all times during the performance of the services specified.
19. If any term or provision of this Contract shall be found to be illegal or unenforceable, the remainder of the contract shall remain in full force and such term or provision shall be deemed stricken.
20. Contractor [or Vendor or Vendor's Employees] will not appropriate or make use of the Lexington-Fayette Urban County Government (LFUCG) name or any of its trade or service marks or property (including but not limited to any logo or seal), in any promotion, endorsement, advertisement, testimonial or similar use without the prior written consent of the government. If such consent is granted LFUCG reserves the unilateral right, in its sole discretion, to immediately terminate and revoke such use for any reason whatsoever. Contractor agrees that it shall cease and desist from any unauthorized use immediately upon being notified by LFUCG.

  
\_\_\_\_\_  
Signature

April 13, 2022  
\_\_\_\_\_  
Date



# CERTIFICATE OF LIABILITY INSURANCE

DATE (MM/DD/YYYY)  
4/14/2022

THIS CERTIFICATE IS ISSUED AS A MATTER OF INFORMATION ONLY AND CONFERS NO RIGHTS UPON THE CERTIFICATE HOLDER. THIS CERTIFICATE DOES NOT AFFIRMATIVELY OR NEGATIVELY AMEND, EXTEND OR ALTER THE COVERAGE AFFORDED BY THE POLICIES BELOW. THIS CERTIFICATE OF INSURANCE DOES NOT CONSTITUTE A CONTRACT BETWEEN THE ISSUING INSURER(S), AUTHORIZED REPRESENTATIVE OR PRODUCER, AND THE CERTIFICATE HOLDER.

**IMPORTANT:** If the certificate holder is an ADDITIONAL INSURED, the policy(ies) must have ADDITIONAL INSURED provisions or be endorsed. If SUBROGATION IS WAIVED, subject to the terms and conditions of the policy, certain policies may require an endorsement. A statement on this certificate does not confer rights to the certificate holder in lieu of such endorsement(s).

<b>PRODUCER</b> <b>Energy Insurance Agency, Inc.</b> <b>P O Box 55268</b> <b>Lexington, KY 40555</b>	<b>CONTACT NAME:</b> <b>PHONE (A/C, No, Ext): (859) 273-1549</b>		<b>FAX (A/C, No): (859) 272-0075</b>	
	<b>E-MAIL ADDRESS: eia@energyinsagency.com</b>			
<b>INSURER(S) AFFORDING COVERAGE</b>			<b>NAIC #</b>	
<b>INSURED</b>  <b>Brandstetter Carroll, Inc.</b> <b>2360 Chauvin Drive</b> <b>Lexington, KY 40517</b>	<b>INSURER A : Employers Mutual Casualty Company, EMC</b>		<b>21415</b>	
	<b>INSURER B : Everest National Insurance Co.</b>		<b>10120</b>	
	<b>INSURER C :</b>			
	<b>INSURER D :</b>			
	<b>INSURER E :</b>			
<b>INSURER F :</b>				


**COVERAGES** **CERTIFICATE NUMBER:** **REVISION NUMBER:**

THIS IS TO CERTIFY THAT THE POLICIES OF INSURANCE LISTED BELOW HAVE BEEN ISSUED TO THE INSURED NAMED ABOVE FOR THE POLICY PERIOD INDICATED. NOTWITHSTANDING ANY REQUIREMENT, TERM OR CONDITION OF ANY CONTRACT OR OTHER DOCUMENT WITH RESPECT TO WHICH THIS CERTIFICATE MAY BE ISSUED OR MAY PERTAIN, THE INSURANCE AFFORDED BY THE POLICIES DESCRIBED HEREIN IS SUBJECT TO ALL THE TERMS, EXCLUSIONS AND CONDITIONS OF SUCH POLICIES. LIMITS SHOWN MAY HAVE BEEN REDUCED BY PAID CLAIMS.

INSR LTR	TYPE OF INSURANCE	ADDL INSD	SUBR WVD	POLICY NUMBER	POLICY EFF (MM/DD/YYYY)	POLICY EXP (MM/DD/YYYY)	LIMITS
A	<input checked="" type="checkbox"/> <b>COMMERCIAL GENERAL LIABILITY</b> <input type="checkbox"/> CLAIMS-MADE <input checked="" type="checkbox"/> OCCUR <input checked="" type="checkbox"/> <b>Blkt Addl Insured</b> <input checked="" type="checkbox"/> <b>Blkt Waiver of Subro</b>  GEN'L AGGREGATE LIMIT APPLIES PER: <input type="checkbox"/> POLICY <input checked="" type="checkbox"/> PROJECT <input type="checkbox"/> LOC OTHER:			5W85769-22	4/23/2021	4/23/2022	EACH OCCURRENCE \$ <b>1,000,000</b> DAMAGE TO RENTED PREMISES (Ea occurrence) \$ <b>300,000</b> MED EXP (Any one person) \$ <b>10,000</b> PERSONAL & ADV INJURY \$ <b>1,000,000</b> GENERAL AGGREGATE \$ <b>2,000,000</b> PRODUCTS - COMP/OP AGG \$ <b>2,000,000</b> \$
A	<input checked="" type="checkbox"/> <b>AUTOMOBILE LIABILITY</b> <input checked="" type="checkbox"/> ANY AUTO OWNED AUTOS ONLY <input type="checkbox"/> SCHEDULED AUTOS <input checked="" type="checkbox"/> HIRED AUTOS ONLY <input checked="" type="checkbox"/> NON-OWNED AUTOS ONLY <input checked="" type="checkbox"/> Blkt Addl Insured <input checked="" type="checkbox"/> Blkt Waiver of Subro			5E85769-22	4/23/2021	4/23/2022	COMBINED SINGLE LIMIT (Ea accident) \$ <b>1,000,000</b> BODILY INJURY (Per person) \$ BODILY INJURY (Per accident) \$ PROPERTY DAMAGE (Per accident) \$ \$
A	<input checked="" type="checkbox"/> <b>UMBRELLA LIAB</b> <input checked="" type="checkbox"/> OCCUR <input type="checkbox"/> EXCESS LIAB <input type="checkbox"/> CLAIMS-MADE DED <input checked="" type="checkbox"/> RETENTION \$ <b>0</b>			5J85769-22	4/23/2021	4/23/2022	EACH OCCURRENCE \$ <b>5,000,000</b> AGGREGATE \$ <b>5,000,000</b> \$
A	<input checked="" type="checkbox"/> <b>WORKERS COMPENSATION AND EMPLOYERS' LIABILITY</b> ANY PROPRIETOR/PARTNER/EXECUTIVE OFFICER/MEMBER EXCLUDED? (Mandatory in NH) <input type="checkbox"/> Y <input checked="" type="checkbox"/> N If yes, describe under DESCRIPTION OF OPERATIONS below		N/A	5H85769-22	4/23/2021	4/23/2022	<input checked="" type="checkbox"/> PER STATUTE <input type="checkbox"/> OTHER E.L. EACH ACCIDENT \$ <b>1,000,000</b> E.L. DISEASE - EA EMPLOYEE \$ <b>1,000,000</b> E.L. DISEASE - POLICY LIMIT \$ <b>1,000,000</b>
A	<b>Ohio Stop Gap</b>			5W85769-22	4/23/2021	4/23/2022	<b>Employers Liability</b> \$ <b>1,000,000</b>
B	<b>Professional Liab</b>			AAEP000267-211	11/27/2021	11/27/2022	<b>\$50,000 retention</b> \$ <b>2,000,000</b>

DESCRIPTION OF OPERATIONS / LOCATIONS / VEHICLES (ACORD 101, Additional Remarks Schedule, may be attached if more space is required)  
The following applies to the Workers' Compensation coverage under Item 3.C. Other States Insurance: All States not shown in 3.A. except AK, CA, HI, LA, ME, NV, NH, ND, OH, RI, VT, WA, WY.

**CERTIFICATE HOLDER** **CANCELLATION**

<b>LFUCG Cardinal Run Park North</b> <b>2101 Parkers Mill Road</b> <b>Lexington, KY 40513</b>	SHOULD ANY OF THE ABOVE DESCRIBED POLICIES BE CANCELLED BEFORE THE EXPIRATION DATE THEREOF, NOTICE WILL BE DELIVERED IN ACCORDANCE WITH THE POLICY PROVISIONS.
	<b>AUTHORIZED REPRESENTATIVE</b> 



**ADDENDUM #1**

RFP Number: #20-2022

Date: March 29, 2022

Subject: Professional Design Services for Cardinal Run North

Address inquiries to:  
Sondra Stone  
sstone@lexingtonky.gov

**TO ALL PROSPECTIVE SUBMITTERS:**

**Please be advised of the following clarifications to the above referenced RFP:**

Please add the following to the Risk Management Provisions for subject RFP:

Notwithstanding, the foregoing with respect to any professional services performed by CONTRACTOR hereunder (and to the fullest extent permitted by law), CONTRACTOR shall indemnify, save, hold harmless and defend LFUCG from and against any and all liability, damages and losses, including but not limited to, demands, claims, obligations, causes of action, judgments, penalties, fines, liens, costs, expenses, interest, defense costs and reasonable attorney's fees, for any damage due to death or injury to any person or injury to any property (including the loss of use resulting therefrom) to the extent arising out of, pertaining to or relating to the negligence, recklessness or willful misconduct of CONTRACTOR in the performance of this agreement.

Todd Slatin, Director  
Division of Central Purchasing

All other terms and conditions of the RFP and specifications are unchanged. This letter should be signed, attached to and become a part of your submittal.

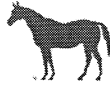
COMPANY NAME: Brandstetter Carroll Inc.

ADDRESS: 2360 Chauvin Drive, Lexington, Kentucky 40517

SIGNATURE OF BIDDER: 



MAYOR LINDA GORTON



**LEXINGTON**

TODD SLATIN  
DIRECTOR  
CENTRAL PURCHASING

**ADDENDUM #2**

RFP Number: #20-2022

Date: March 31, 2022

Subject: Professional Design Services for Cardinal Run North

Address inquiries to:  
Sondra Stone  
sstone@lexingtonky.gov

**TO ALL PROSPECTIVE SUBMITTERS:**

**Please be advised of the following clarifications to the above referenced RFP:**

Question: Has an environmental assessment or other environmental investigation been performed for the site, and if not, should we include it in our scope and fee, given the potential for sensitive areas?

Response: See attached.

Todd Slatin, Director  
Division of Central Purchasing

All other terms and conditions of the RFP and specifications are unchanged. This letter should be signed, attached to and become a part of your submittal.

COMPANY NAME: Brandstetter Carroll Inc.

ADDRESS: 2360 Chauvin Drive, Lexington, Kentucky 40517

SIGNATURE OF BIDDER:  \_\_\_\_\_

