

SNOW PLAN UPDATE

Winter 2018-2019

*Environmental Quality & Public Works Committee
September 18, 2018*

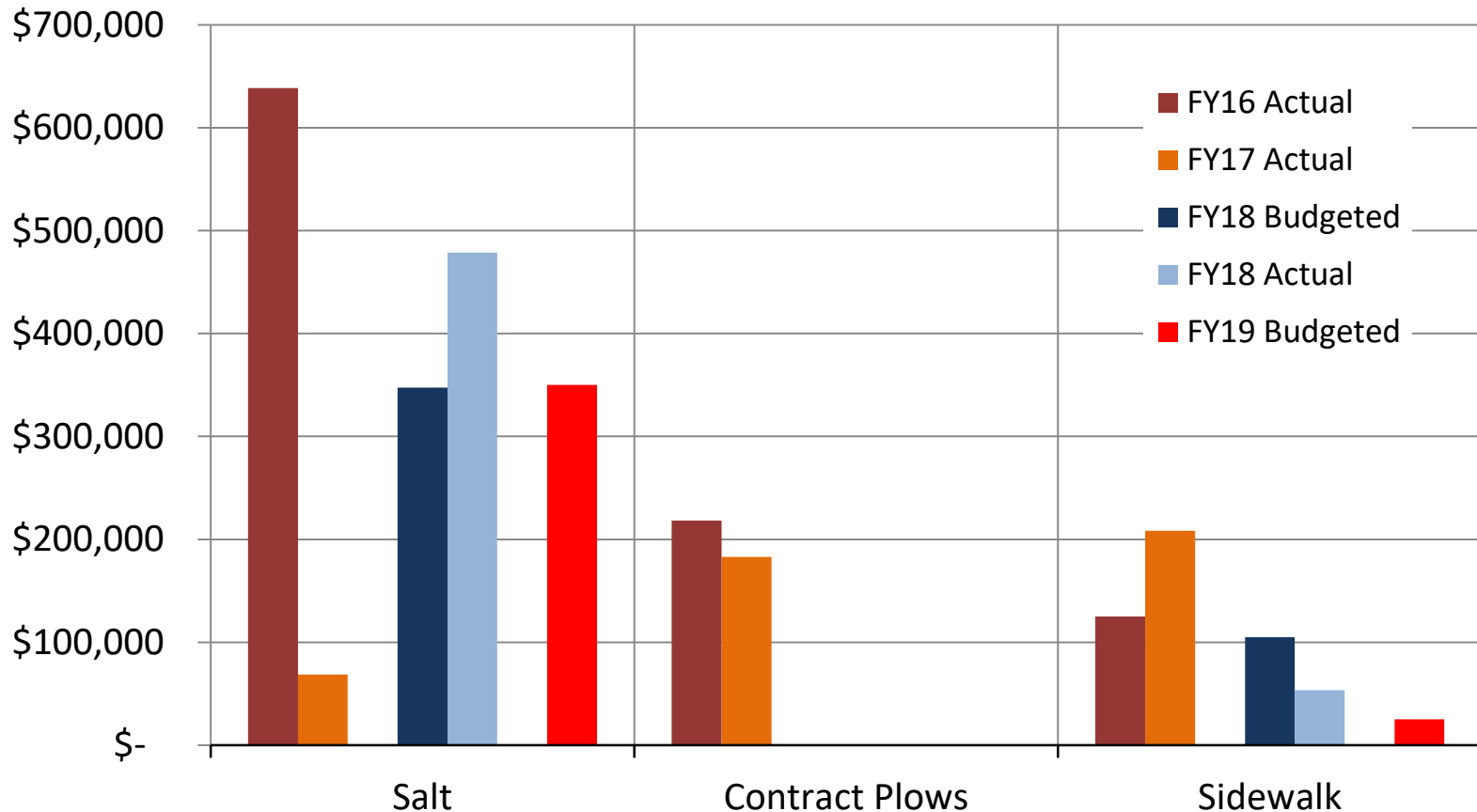


LEXINGTON

Presentation Overview

- Snow Season Expense Comparison
- Status of Salt
- Route Rankings
- Service Levels
- Changes to the Snow Plan
- Sidewalk Snow Removal
- Staffing
- Projected Schedule for Plan Finalization

Snow Season Expense Comparison



** Does not include personnel*

Salt

Salt used in FY17 → est. 2,900 tons with 4 full mobilizations & 1 partial mob.

Salt used in FY18 → est. 10,306 tons with 12 full mobilizations & 6 partial mob.

Salt currently available → 3,000 tons at Streets and Roads

FY18 cost → \$58.32/ton

FY19 cost → \$89.44/ton (salt delivered by rail / stored locally / delivered to S&R)

FY19 budget → \$350,000 = 3,913 tons @ current price





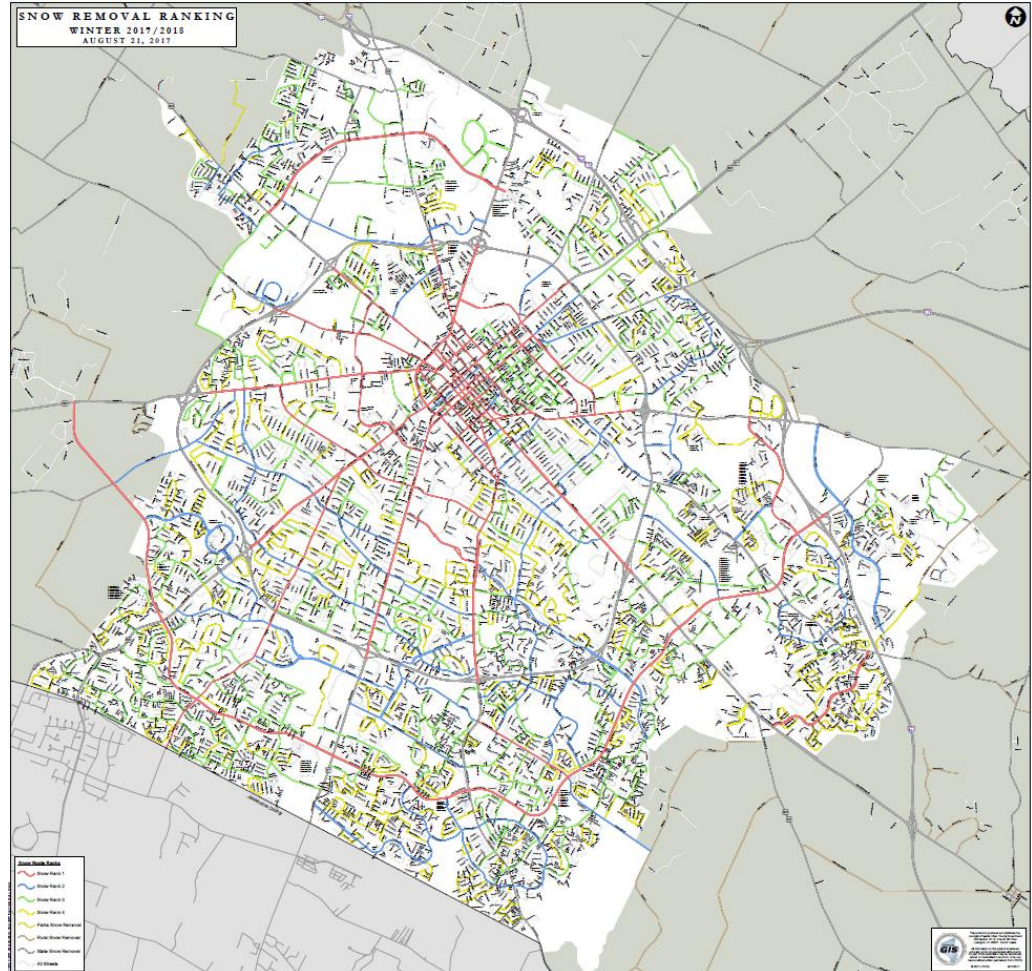
Route Rankings

Rank 1 -- primary arteries in and out of the city. (*Nicholasville Rd, Man O' War Blvd, etc.*)

Rank 2 -- major connecting streets. (*Lane Allen Rd, Loudon Ave, etc.*)

Rank 3 -- collector routes. (*Sandersville Rd, Old Todds Rd, etc.*)

Rank 4 -- local residential streets, which allow residents access to the main roads (*Dunkirk Dr, Glendover Rd, etc.*)





Service Levels

Level 1 → 1" to 4" of accumulation

- Operate under current plan (Rank 1 - 4 streets)

Level 2 → 5" to 8" of accumulation

- Add residential collector streets that connect to collector streets

Level 3 → 8" of accumulation and above

- Attempt to plow as many streets as possible

Changes to 2017-18 Snow Plan

Goal

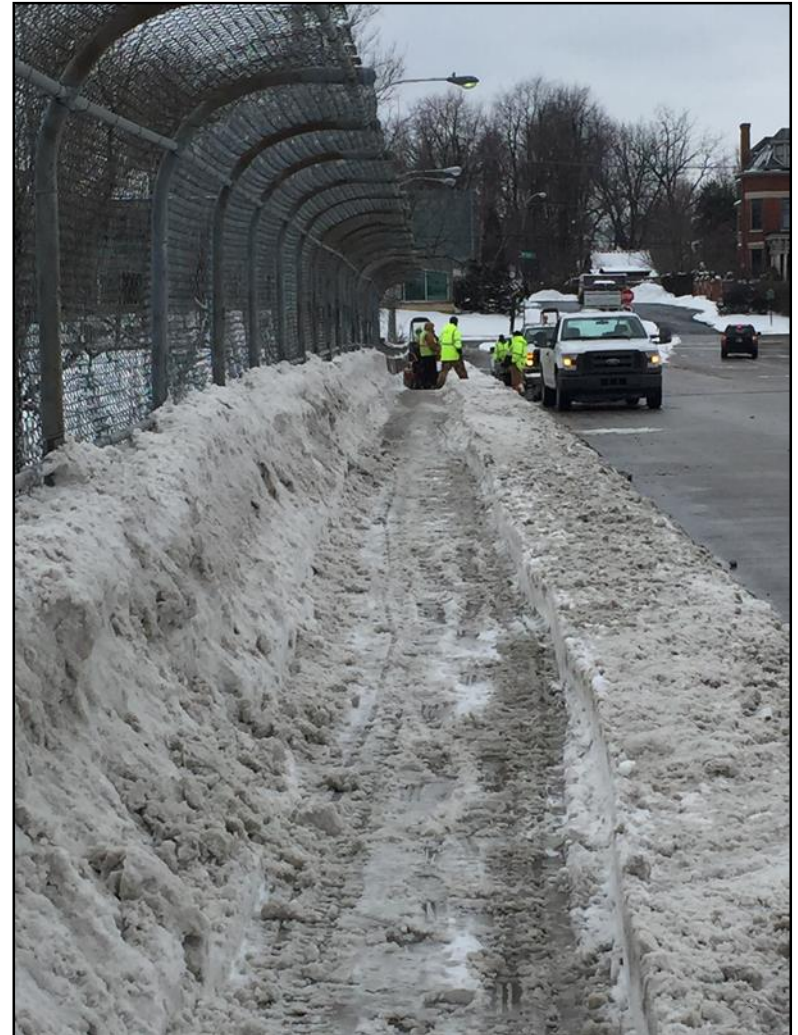
- Complete Roadway Snow Plan (Rank 1-4 routes) within 36 hours of snow end.
- Complete Sidewalk Snow Plan (Ranked 1 – 3 routes) within 96 hours of snow end.

Resulting Changes for 2018-19 Snow Season

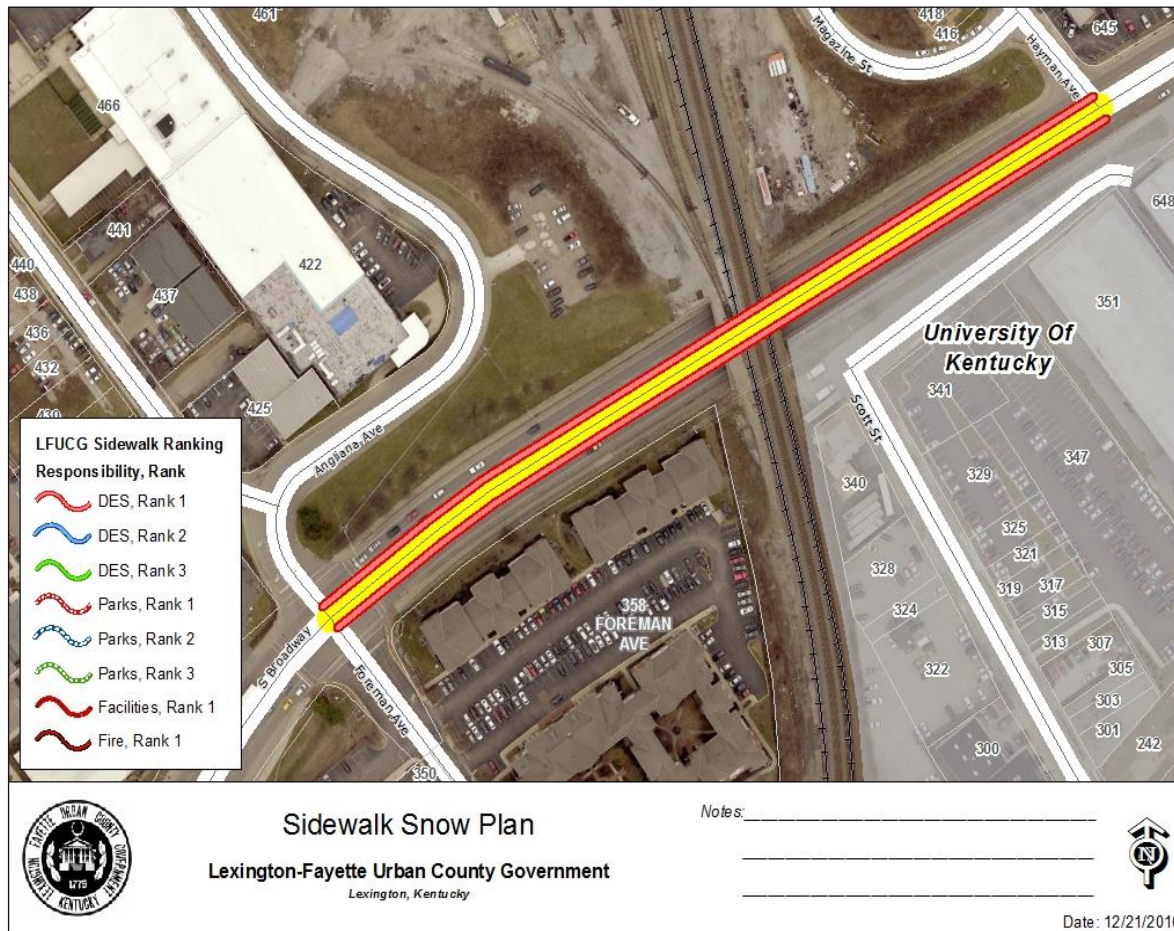
- Treatment for Citation Blvd now a state responsibility.
- Minor edits to reflect connectivity concerns, school access and completion of final asphalt surfacing on Priority streets.

Sidewalk Snow Removal

- Primary execution by combined forces of Environmental Services, Parks, and Facilities.
- Nearly 80 miles of sidewalks serviced with full execution of the plan.



Sidewalk Snow Removal



- \$25,000 budgeted to provide for contractor assistance to remove snow on viaducts at Level 2 (5-inches) or above.
- Sidewalk clearing begins after snow stops. Must coordinate timing with road crews to minimize re-coverage after clearance.



Sidewalk Snow Removal

Sidewalk Rank and Area	Area Size	Service Level
Rank 1 <ul style="list-style-type: none">• City-owned facilities• Corridors (viaducts), and city-maintained sidewalks/crosswalks (high density)• Service Open Parks Facilities	13.5 Sidewalk Miles	Clearance within 24 hours of snow end.
Rank 2 <ul style="list-style-type: none">• Designated city-maintained sidewalks on arterials and collectors in high density areas (i.e. Man O' War, Wellington Way, Wilson Downing, etc.)• Service Closed Parks Facilities & near Bus stops	36.3 Sidewalk Miles	Clearance within 48 hours of snow end.
Rank 3 <ul style="list-style-type: none">• City-owned parcels in lower density residential areas (WQ lots, greenways);• Perimeter sidewalks of Parks - High density areas to have a higher priority than low density areas	29.3 Sidewalk Miles	Partial Clearance within 96 hours of snow end.

Staffing

Streets and Roads -- authorized strength: 67 CDL positions.

Water Quality – authorized strength: 29 available CDL positions.

Environmental Services -- 12 to 14 positions operating equipment and/or shovels, including two backup CDL drivers.

Other – backup drivers from Water Quality, Parks, Waste Management and Environmental Services (if needed).



Plan Finalization Schedule

EQ&PW Committee Update – September 18, 2018

Stakeholder Meeting – September 27, 2018

(LexTran, FCPS, state, etc.)

Post to Webpage – October 9, 2018



QUESTIONS / COMMENTS?