

A background graphic featuring a network diagram. It consists of numerous nodes, represented by circles of varying sizes and colors (gray, blue, and green), connected by thin lines. The nodes are distributed across the frame, with a higher density in the top-left and bottom-right corners, creating a sense of a sprawling network.

METRONET

Fiber Optic Internet, TV and Phone



LEXINGTON



METRO⁺NET

Feb 2017

MetroNet commits to a \$70 million investment to make Lexington the largest Gigabit city in the nation



Oct 2017

Initiative to provide citizens and businesses additional options for TV, Internet and Phone, while becoming a Gigabit city



Dec 2017

Franchise agreement awarded



Feb 2018

Construction begins, kicking off the multi year plan for Lexington Build



July 2018

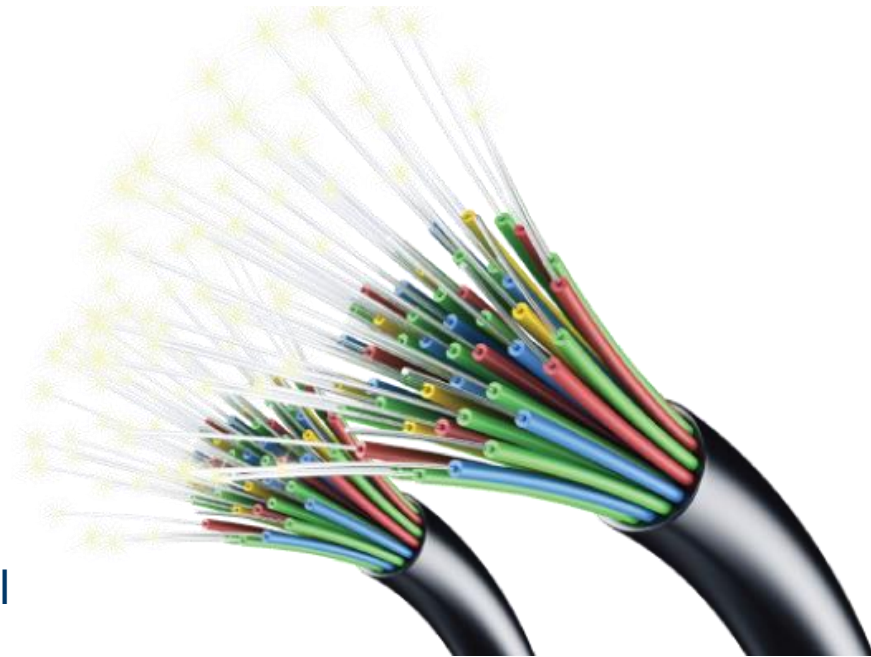
MetroNet installs first customer in Lexington, KY



ADVANTAGES OF FIBER

Gigabit Internet traveling on light waves through fibers the size of a human hair!

- Dedicated connection with significantly increased bandwidth
- Consistently fast Internet, 24/7, with no slowdowns and virtually buffer-free
- Stunning TV picture with no pausing, stuttering, lag time, or pixilation
- Crystal-clear phone quality
- Resistant to water damage and electrical or radio interference, resulting in higher reliability with lower operating expense



METRONET ACCOMPLISHMENTS

- **13 miles** of fiber backbone completed of the 140 miles planned
- Sponsorship of numerous Events including The Woodland Art Fair, Thursday Night Live!
- More than **2,000 customers presold** and over **500 installed** as of mid-September

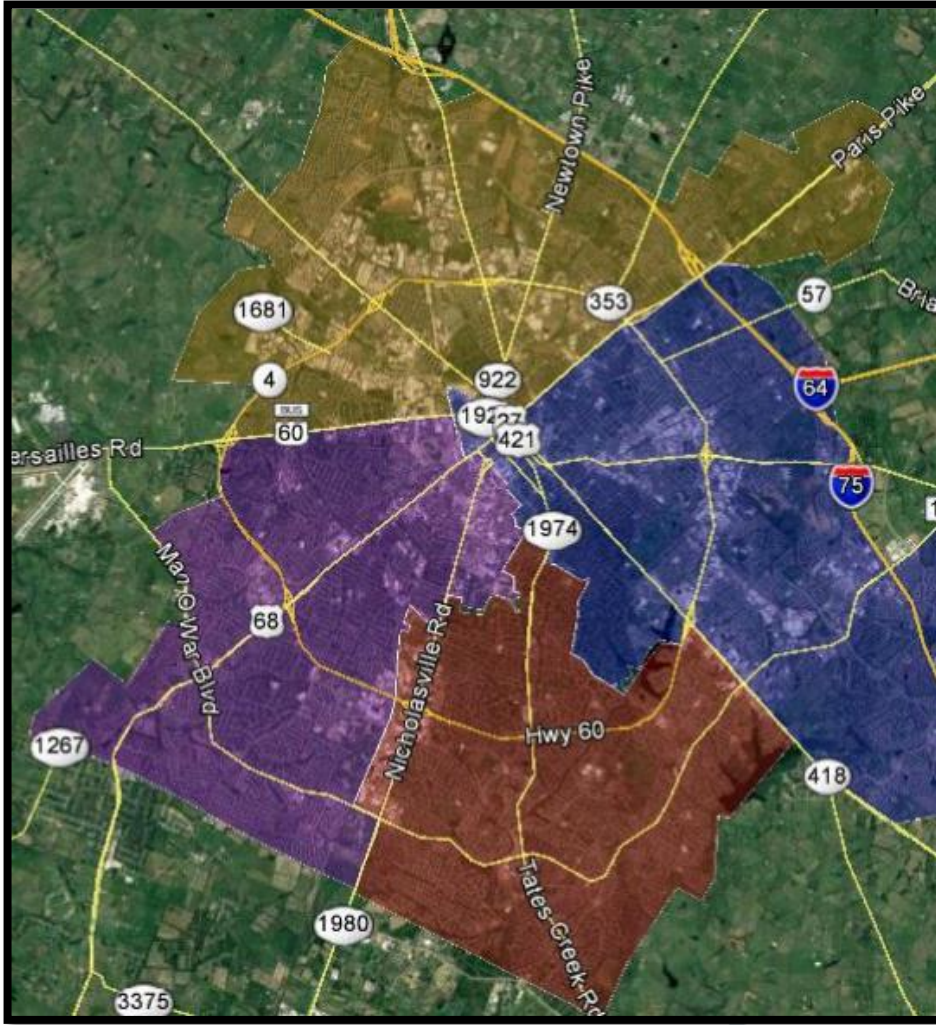
128 employees YTD

41 Direct

87 Contract

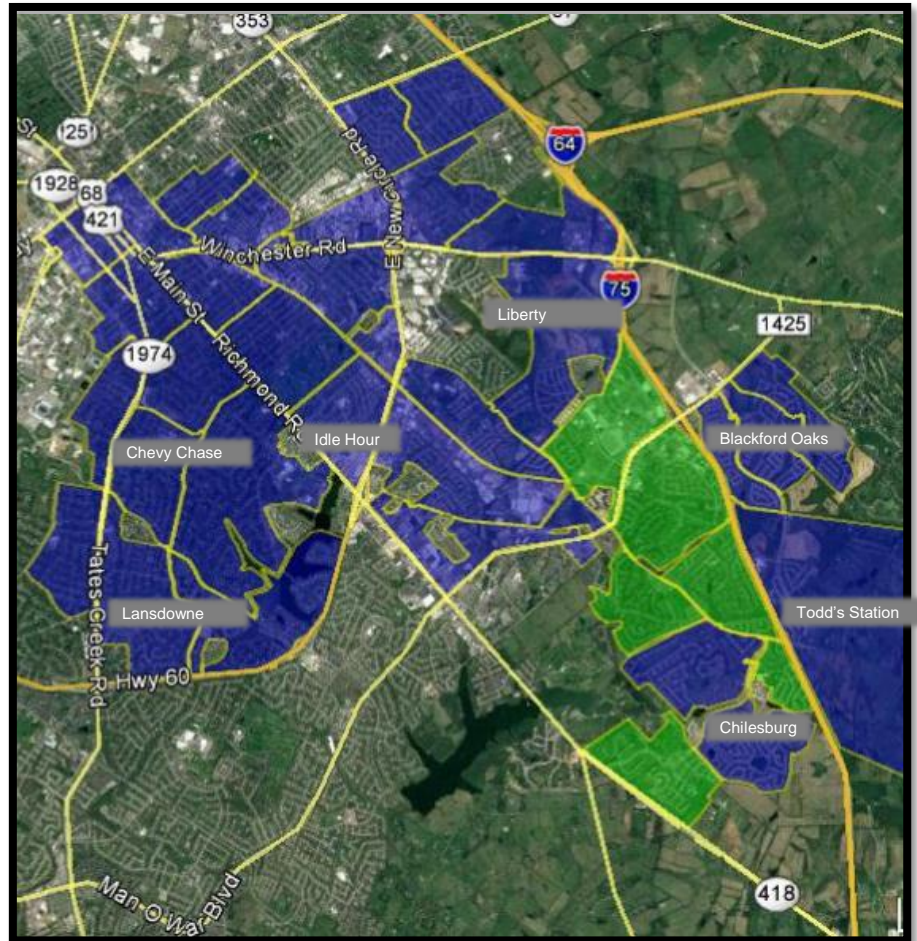
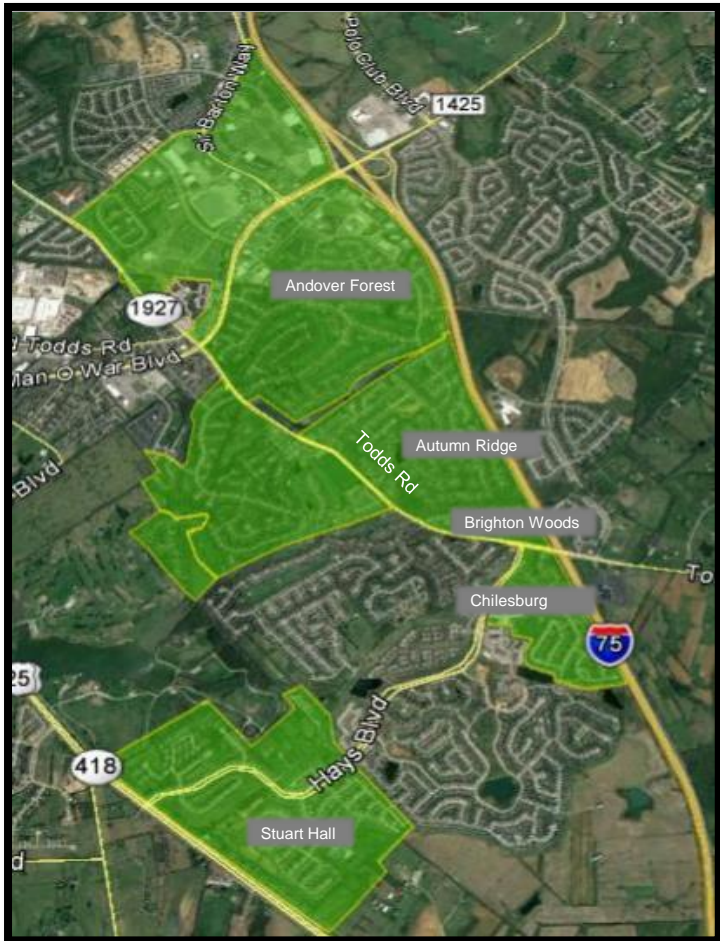


CONSTRUCTION PLANS



- Anticipate availability to over 100,000 homes and businesses
- Four quadrant system to deploy fiber access in geographic areas
- Seeking Right of Entry Agreements for Apartments, Condos and other Private Access entities
- 35,000+ Multiple Dwelling Units
- 9,000 Businesses

CONSTRUCTION UPDATE

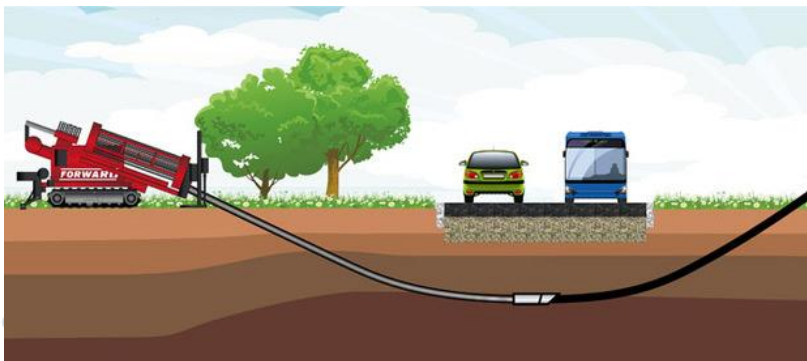


**3,300
households
serviceable
to date**

**Forecasted
Releases in
the next
90 Days**

CONSTRUCTION COMMUNICATION

- 30 days prior to MetroNet initiating construction, residents receive a letter in the mail
- 15 days prior to construction, a postcard reminder will also come in the mail
- 1 -2 weeks in advance of construction, utility and communication lines will be marked off with paint and flags



- 7 days before construction, yard signs will appear throughout the neighborhood
- Day of construction in the area, citizens are notified at the door

CONSTRUCTION FEEDBACK SYSTEM

<https://construction.metronetinc.com/cct>

METRO NET CONSTRUCTION AREAS ASK QUESTIONS CONSTRUCTION PROCESS PRODUCTS TICKET LOOKUP

ASK QUESTIONS

We're building the area's only 100% fiber optic network. While our construction phase is temporary, we understand you may have questions during this process. Please submit your information using the form below. Or, call us at (877) 386-3876.

Date: 09/06/2018

Zip: Address:

City: State:

Name: Email:

Phone:

Has your home been installed with MetroNet services? ☐ Yes ☐ No

Reason for submission:

☐ Underground Fence Notification
☐ Sprinkler System Notification
☐ Underground Utilities Notification
☐ Restoration
☐ Property Impacted
☐ Exposed Line
☐ Other Questions

Upload picture – you may include pictures about your submission, but this is not required. (Click or drag your picture here)

Comments:

SUBMIT

- RESIDENTS should mark off sprinkler systems and underground fences **when yard signs appear in the neighborhood**
- Construction concerns can be relayed to the website with a 24-hour response
- **55%+ were completed within 24-hours**
- **85%+ were completed within 3 days**
- If a resident utility line is cut by MetroNet, the RESIDENT needs to call the provider for resolution (i.e. Spectrum or Windstream)



**Kathy Scheller | MetroNet
External Affairs**

3701 Communications Way
Evansville, Indiana
(812) 760-9228

Kathy.Scheller@metronetinc.com

Customer Service
130 W. Tiverton Way Suite 160
Lexington, KY 40503
859.785.1100