

PARKS AND RECREATION MASTER PLAN DRAFT REPORT

Council Work Session

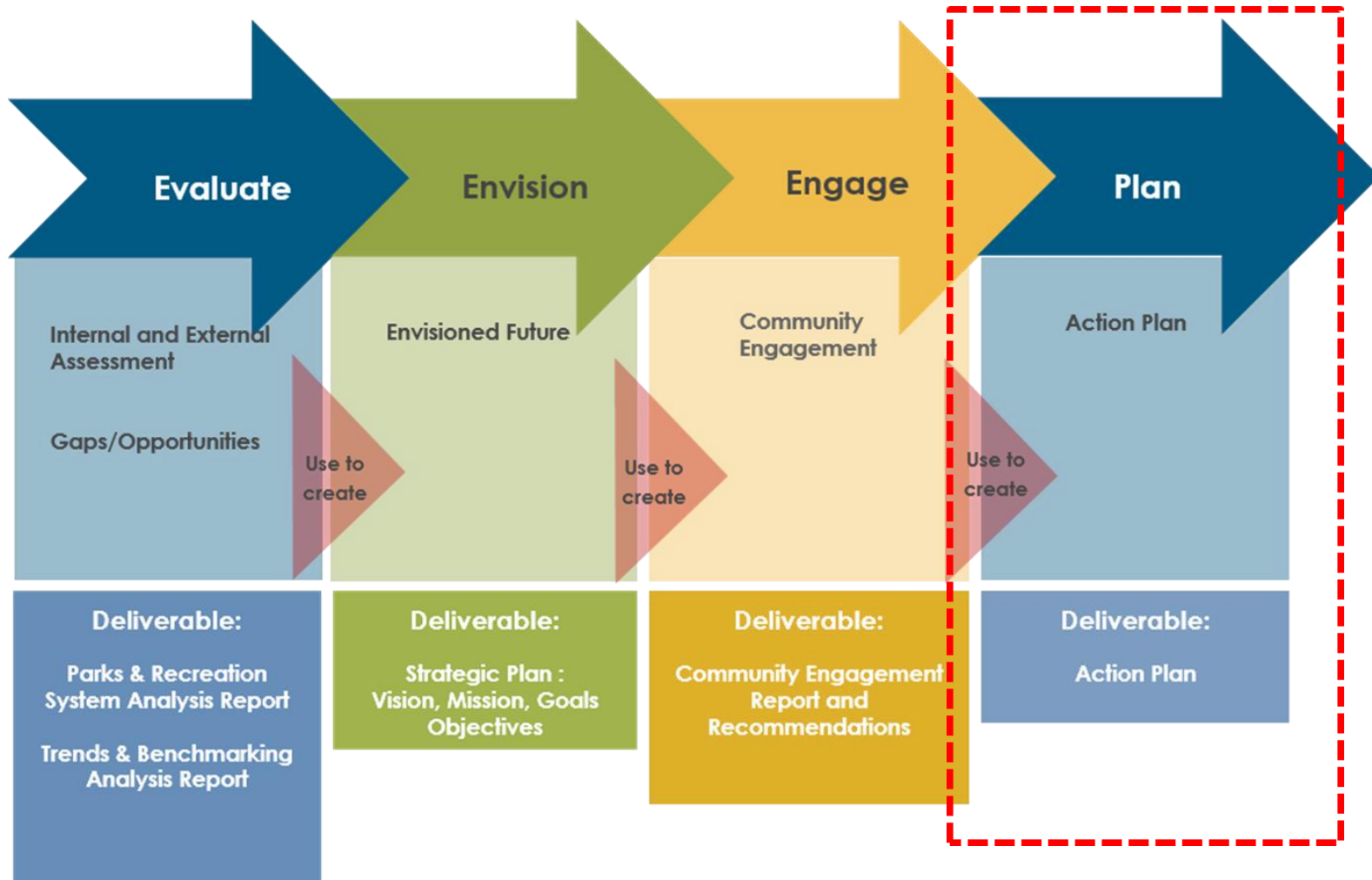
May 1, 2018



LEXINGTON



Planning Process





Master Plan Outcomes

- Identifies where, why, and how services could be improved
- Focuses on the next ten years
- Acts as a guide for Council, Administration, Parks & Recreation, Planning, and Other Divisions/Agencies
- Establishes recommendations:
 - Parks
 - Programs
 - Facilities
 - Trails
 - Operations
 - Marketing
 - Parkland Acquisition
 - Planning for Community Growth
- Long-term strategies for park system development
- Coordinated with the Comprehensive Plan, Bike & Ped Plan, Urban Forestry Plan, Town Branch, Small Area Plans



Master Plan Executive Summary

- Introduction
- Planning Context
 - Demographics
 - Social Needs and Conditions
 - Planning Sectors
 - Benchmarking Comparisons and Case Studies
- Inventory of Parks, Facilities and Programs
- Public Input – Over 3000 engaged
 - Community Conversations (4)
 - Stakeholder Groups (22)
 - Events (16)
 - Dollar Voting
 - Surveys (2)
 - Online Engagement (mySidewalk)
- Needs Assessment
 - Parkland and Recreation Areas
 - Facility Needs
 - Geographic Distribution
 - Trends in Parks and Recreation



Master Plan Executive Summary

- Strategic Plan
 - Mission, vision, values, goals, objectives
- Systemwide Recommendations
 - Primary Park System
 - Operations and Management
 - Programs
 - Conservation and Sustainable Development
 - Priority Improvements
 - Trails
 - Aquatics
 - Equestrian Facilities
 - Golf Courses
 - Indoor Facilities
 - Parkland Acquisition and Development
 - Design Guidelines



Master Plan Executive Summary

- Park and Facility Improvements
 - Outdoor facilities
 - Park recommendations by sector
 - Regional and Nature park recommendations
 - Park operations and maintenance facilities
 - Capital improvements
- Action Plan
 - 198 strategies
 - Organized by the Goals and Objectives
 - Priority Levels and Time Frame
 - High Priority (short term): 0-2 years; 3-5 years
 - Medium Priority (medium term): 6-10 years
 - Low Priority (long term): 10+ years
 - Ongoing
 - Identifies
 - Planning Sector
 - Category
 - Agency Responsible
 - Funding Source
 - Links to other plans



Master Plan Executive Summary

- Appendices
 - Methodology
 - Social Needs Census Tract Profiles
 - Park Land Photo Inventory
 - Public Input Summaries
 - Other Relevant Plans and Studies
 - Needs Assessment Survey (mail survey)
 - Web and Handout Survey



Next Steps

- Provide any comments or suggestions for inclusion in the final Parks and Recreation Master Plan
- Adopt the Parks and Recreation Master Plan as a guide for future operations and improvements

Questions?



LEXINGTON