

SNOW PLAN UPDATE

Winter 2017-2018

*Environmental Quality & Public Works Committee
September 19, 2017*

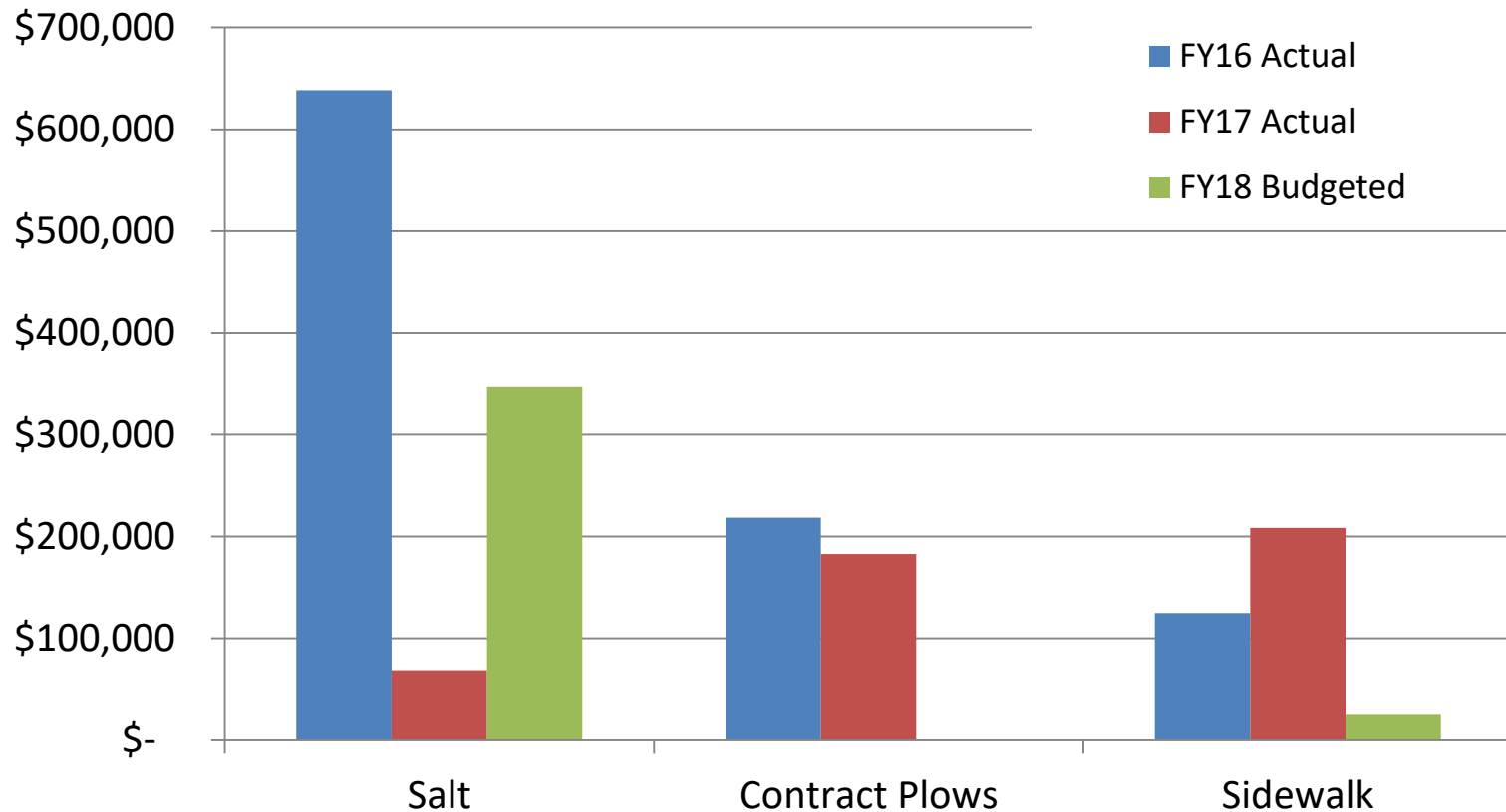


LEXINGTON

Presentation Overview

- Snow Season Expense Comparison
- Salt
- Route Rankings
- Service Levels
- Changes to the Snow Plan
- Sidewalk Snow Removal
- Snow Plow Tracker (beta version)

Snow Season Expense Comparison



** Does not include personnel*

Salt

Salt used in FY16 → 9,015 tons

Salt used in FY17 → 2,900 tons with 4 full mobilizations & 1 partial mob.

Salt currently available → 3,000 tons in Barn

FY17 cost → \$69.00/ton

FY18 cost → \$58.32/ton (Cargill is new vendor; salt trucked from Louisville)

FY18 budget → \$347,500 = 5,958 tons @ current price





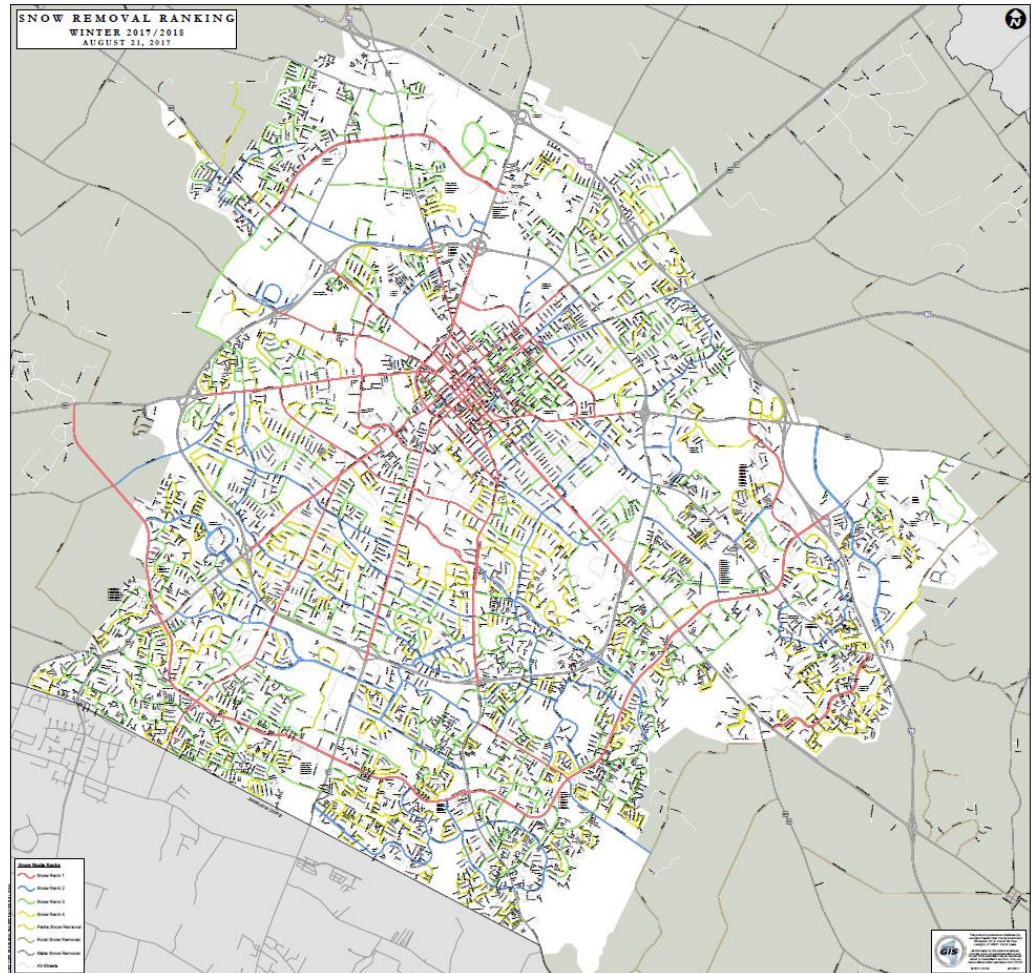
Route Rankings

Rank 1 -- primary arteries in and out of the city. (*Nicholasville Rd, Man O' War Blvd, etc.*)

Rank 2 -- major connecting streets. (*Lane Allen Rd, Loudon Ave, etc.*)

Rank 3 -- collector routes. (*Sandersville Rd, Old Todds Rd, etc.*)

Rank 4 -- local residential streets, which allow residents access to the main roads (*Dunkirk Dr, Glendover Rd, etc.*)





Service Levels

Level 1 → 1” to 4” of accumulation

- Operate under current plan (Rank 1 - 4 streets)

Level 2 → 5” to 8” of accumulation

- Add residential collector streets that connect to collector streets

Level 3 → 8” of accumulation and above

- Attempt to plow as many streets as possible

Changes to 2017-18 Snow Plan

Goal

- Complete Snow Plan (Rank 1-4 routes) within 24 hours of snow end.

Difference from 2016-17 Snow Season

- Contractor support not funded in FY18 (serviced 150 lane miles each 12 hour shift).
- Snow truck driver shortage (anticipate 120 fewer lane miles plowed each 12 hour shift).

Resulting Changes for 2017-18 Snow Season

- Reviewed each street added to the Snow Plan since 2015 and identified 84 lane miles of ranked streets for removal from plan.

Sidewalk Snow Removal

FY 2018 Status

- All equipment purchased in FY16-17
- \$25,000 budgeted to provide for contractor assistance to remove snow on viaducts at Level 2 (5-inches) or above.
- Coordinate timing with plowing operations to try to minimize re-coverage of sidewalks after clearance.



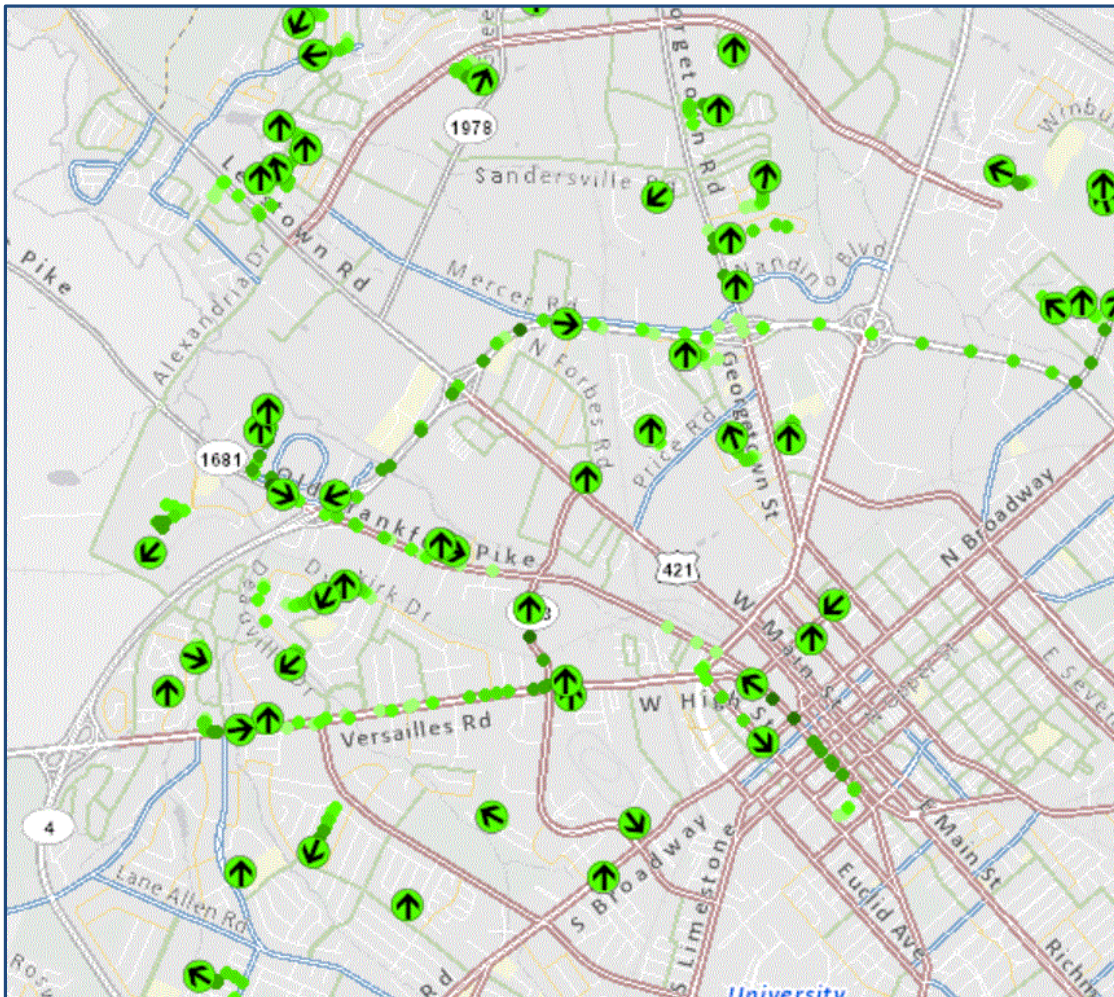


Sidewalk Snow Removal

Sidewalk Rank and Area	Area Size	Service Level
Rank 1 City-owned facilities, corridors (viaducts), and city-maintained sidewalks Sidewalks @ Service Open Parks Facilities	12.25 Sidewalk Miles	Clearance within 24 hours of snow end.
Rank 2 Specific city-maintained sidewalks on arterials and collectors in high density areas (i.e. Man O' War, Alumni Dr., etc.) Sidewalks @ Service Closed Parks Facilities & near Bus stops	36 Sidewalk Miles	Clearance within 48 hours of snow end.
Rank 3 City-owned parcels in lower density residential areas Perimeter sidewalks of Parks - High density areas to have a higher priority than low density areas	24.5 Sidewalk Miles	Partial Clearance within 96 hours of snow end.

Snow Plow Tracker

Beta Test in FY18



Legend

Tracking Test

Vehicle Location



Vehicle Trail - 1 minute



Vehicle Trail - 2 minutes



Vehicle Trail - 3 minutes



Vehicle Trail - 4 minutes



Vehicle Trail - 5 minutes



Ranked Snow Routes

Snow Ranking - 72k

Rank 1

Rank 2

Rank 3

Rank 4

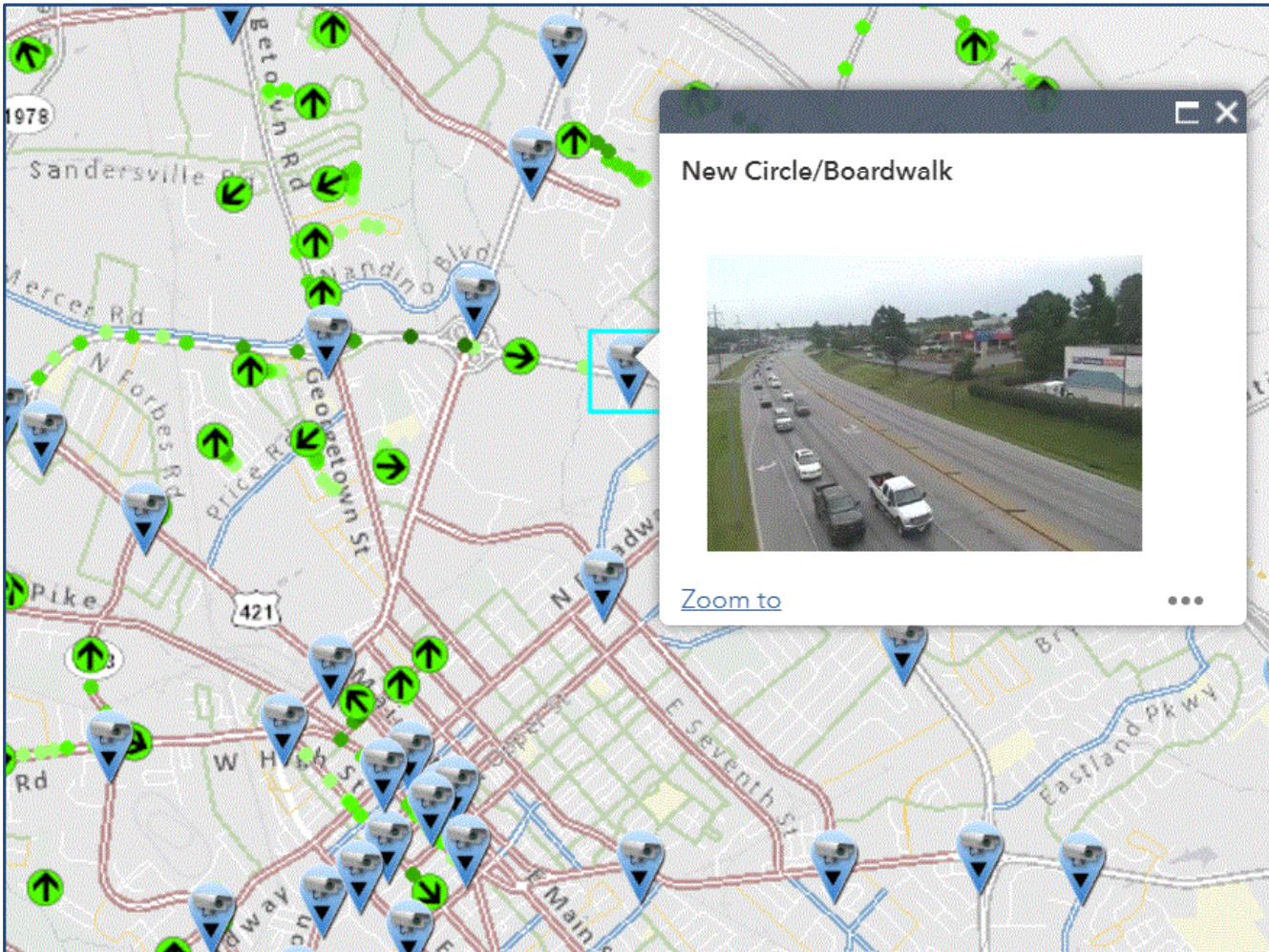
Parks Snow Removal

Rural Snow Removal

State Snow Removal

Snow Plow Tracker

Beta Test in FY18





QUESTIONS?