

SNOW PLAN UPDATE

Winter 2019-2020

*Environmental Quality & Public Works Committee
November 19, 2019*



LEXINGTON



Presentation Overview

- Snow Season Expense Comparison
- Status of Salt
- Route Rankings
- Service Levels
- Changes to the Snow Plan
- Sidewalk Snow Removal
- Staffing
- Projected Schedule for Plan Finalization

Snow Season Expense Comparison

Fiscal Year	Expense*	Salt used (Tons)	Salt price (per ton)	Mobilizations Full / Partial**
2018	\$478,700	10,306	\$58.32	12 / 6
2019	\$349,000	4,215	\$86.44	4 / 13

** Does not include personnel*

*** "Typical" winter averages 22 mobilizations per year*

Full mobilization = all drivers and all supervisors

Partial mobilization = 1 supervisor and 1 driver per area



Salt supply

Currently on hand → 2,800 tons. Before winter an additional 2,000 tons will be loaded into the Brannon Road facility.

Storage Capacity → 8,800 tons total

1,800 tons at Old Frankfort Pike & 7,000 tons at Brannon Road

FY 2020 budget → \$350,000

FY20 salt cost → \$89.44/ ton (to Old Frankfort Pike)

\$91.44/ ton (to Brannon Road)

Route Rankings

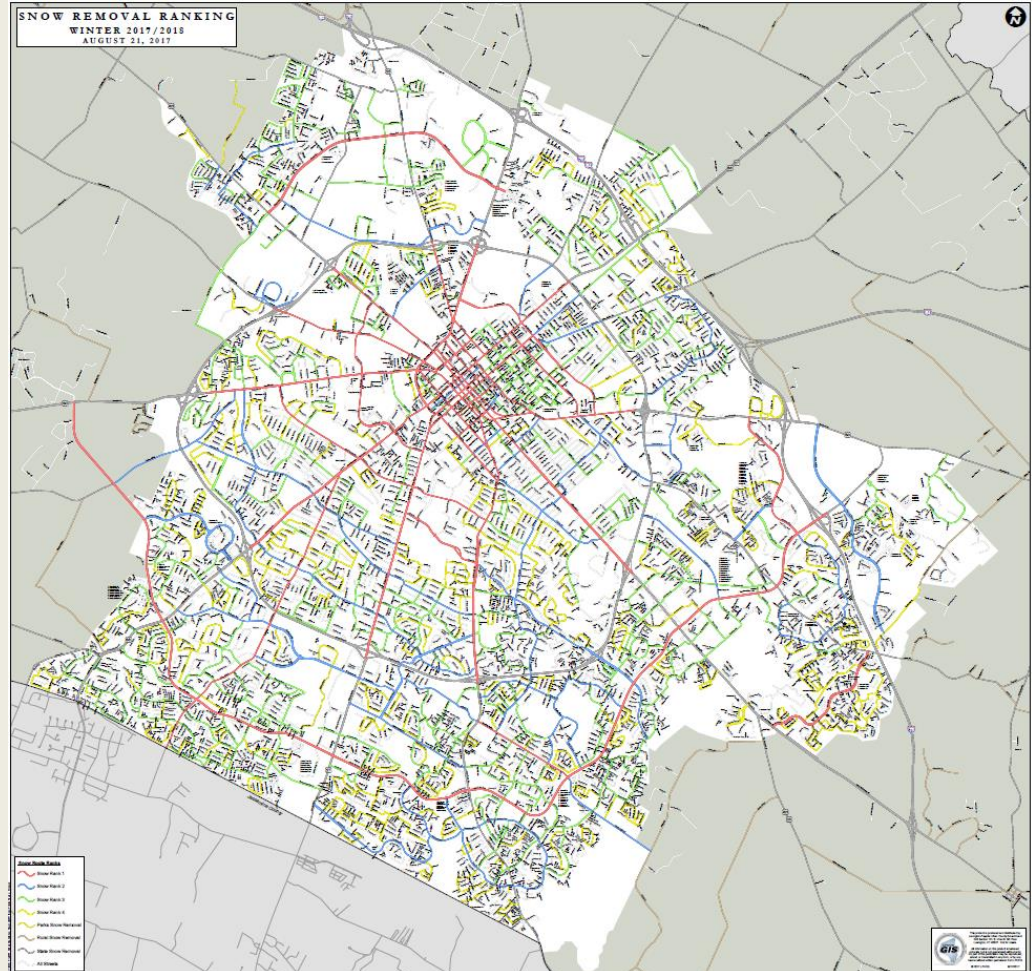
Rank 1 -- primary arteries in and out of the city. (*Nicholasville Rd, Man O' War Blvd, etc.*) 296 lane miles*

Rank 2 -- major connecting streets. (*Lane Allen Rd, Loudon Ave, etc.*) 192 lane miles*

Rank 3 -- collector routes. (*Sandersville Rd, Old Todds Rd, etc.*) 356 lane miles*

Rank 4 -- local residential streets, which allow residents access to the main roads (*Dunkirk Dr, Glendover Rd, etc.*) 330 lane miles*

*lane miles:
1 mile of a 2-lane road = 2 lane-miles





Service Levels

Level 1 → 1” to 4” of accumulation

- Operate under current plan (Rank 1 - 4 streets)

Level 2 → 5” to 8” of accumulation

- In addition to the Rank 1-4 routes we will add unranked residential collector streets that connect to collector streets

Level 3 → 8” of accumulation and above

- In addition to the rank 1-4 streets, we will attempt to plow as many streets as possible



Changes for 2019-20 Snow Season

- Minor edits to reflect connectivity concerns, and school and public safety access.
- Increase pre-wetting of salt to reduce bounce and increase effectiveness
- Areas 3, 4, 5, 6, 7-F and 9 will report to Brannon Road barn
- More widespread sharing of the snow plow tracker website information
- Added a 4th ranking for sidewalks. These will consist of the lower density facilities on the perimeter of Parks and other city owned property in low traffic residential areas.
- Rank 3 and 4 sidewalks may not be plowed in a service level 1 or 2 event.



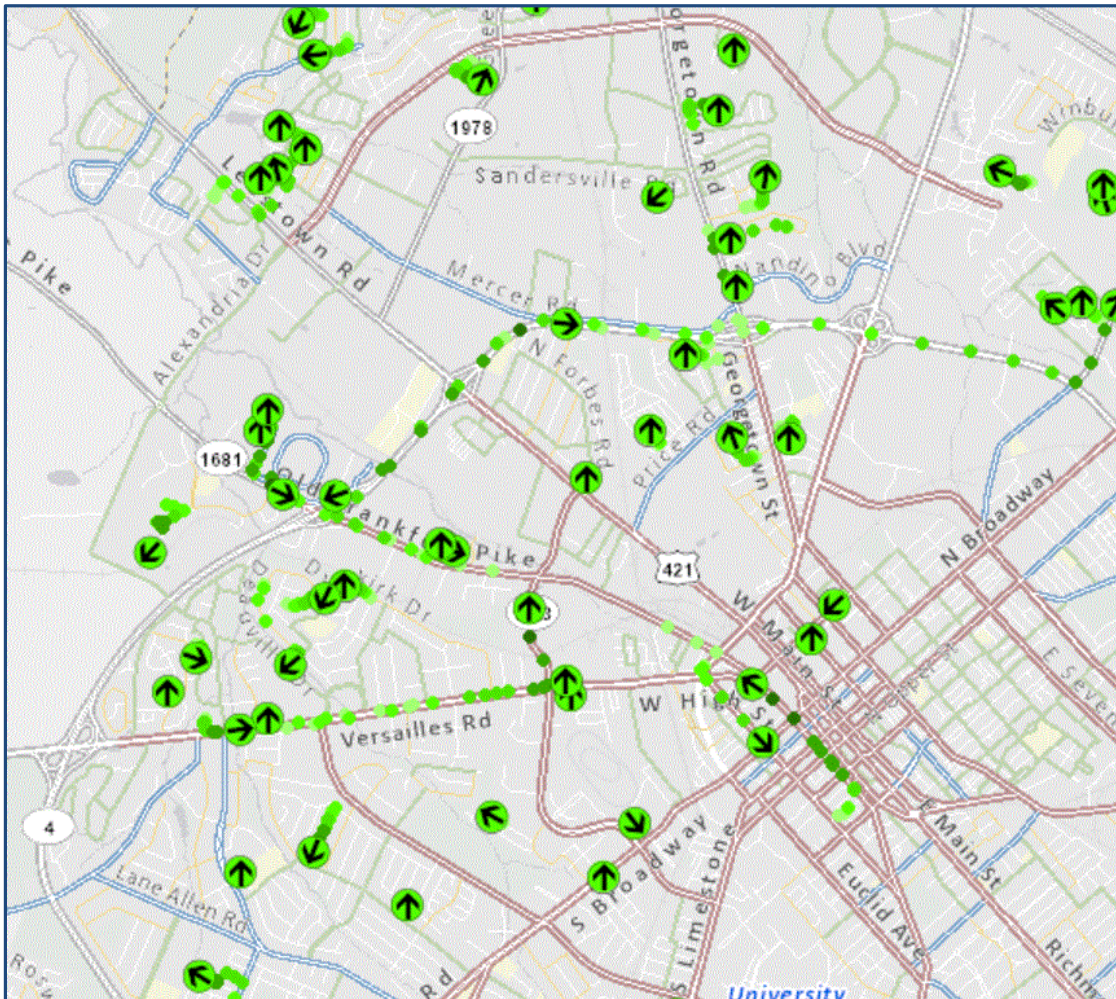
2019-20 Snow Plan

Goals

- Complete Roadway Snow Plan (Rank 1 – 4 routes) within 36 hours of snow end.
- Complete Sidewalk Snow Plan (Ranked 1 – 4 routes) within 96 hours of snow end.







Snow Plow Tracker

<https://maps.lexingtonky.gov/snowresponse>










Legend

Tracking Test

- Vehicle Location 
- Vehicle Trail - 1 minute 
- Vehicle Trail - 2 minutes 
- Vehicle Trail - 3 minutes 
- Vehicle Trail - 4 minutes 
- Vehicle Trail - 5 minutes 

Ranked Snow Routes

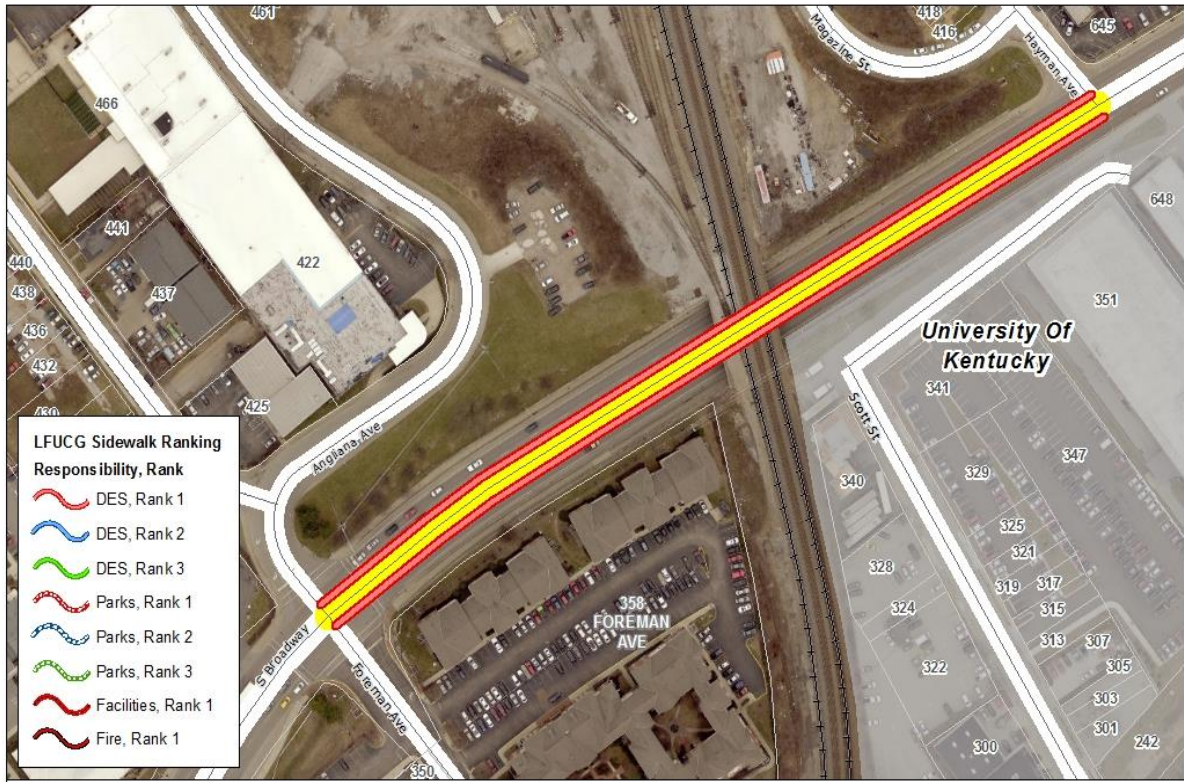
- Snow Ranking - 72k
 - Rank 1 
 - Rank 2 
 - Rank 3 
 - Rank 4 
- Parks Snow Removal 
- Rural Snow Removal 
- State Snow Removal 

Sidewalk Snow Removal

- Primary execution by combined forces of Environmental Services, Parks, and Facilities.
- 81 miles of sidewalks serviced with full execution of the plan.



Sidewalk Snow Removal



- Sidewalk clearing begins after snow stops. Must coordinate timing with road crews to minimize re-coverage after clearance.
- When possible we may begin clearing snow downtown before snow ends and revisit during or after the event as well



Sidewalk Snow Plan
 Lexington-Fayette Urban County Government
 Lexington, Kentucky

Notes: _____



Date: 12/21/2016

Sidewalk Snow Removal

Rank examples	Length
<p>Rank 1</p> <ul style="list-style-type: none"> • Overpasses and underpasses • City-owned facilities • high density city-maintained sidewalks/crosswalks • Service Open Parks Facilities 	<p>12.0 Sidewalk Miles</p>
<p>Rank 2</p> <ul style="list-style-type: none"> • Designated city-maintained sidewalks on arterials and collectors in high density areas (i.e. Man O’ War, Wellington Way, Wilson Downing, etc.) • Service Closed Parks Facilities & near Bus stops • School routes (school closed) 	<p>36.2 Sidewalk Miles</p>
<p>Rank 3</p> <ul style="list-style-type: none"> • Perimeter sidewalks of Parks - High density areas 	<p>15.9 Sidewalk Miles</p>
<p>Rank 4</p> <ul style="list-style-type: none"> • City-owned parcels in lower density residential areas (WQ lots, greenways); • Perimeter sidewalks of Parks - low density areas 	<p>16.9 Sidewalk Miles</p>



Staffing

Streets and Roads -- authorized strength: 67 CDL positions.

Water Quality – authorized strength: 29 CDL positions. Not all available to drive at the same time in case of breaks.

Environmental Services -- 12 to 14 positions operating equipment and/or shovels, including two backup CDL drivers.

Other – backup drivers from Water Quality, Parks, Waste Management and Environmental Services (if needed).



Plan Finalization Schedule

EQ&PW Committee Update – October 22, 2019

Stakeholder Meeting – September 16, 2019

(LexTran, FCPS, state, etc.)

Post to Webpage – October 30, 2019

QUESTIONS / COMMENTS?

